

LAKE GRACE LINK NEWS

Produced at the
LAKE GRACE COMMUNITY RESOURCE CENTRE
School Place
PO Box 177 Lake Grace WA 6353
Ph (08) 9865 1470 Fax (08) 9865 1471
Email: central@lakegracecrc.net
ABN: 19 498 730 152
Website: www.lakegracecrc.net

13th February 2025

\$2.00 inc GST

Vol 31 Issue 2

Vandalism Isn't Okay

Suzanne Reeves. Photos supplied by Kerrie Argent.



Most of us are mortified if we damage something and are quick to try to rectify the situation so it beggars belief why anyone would set out to damage the road signs on the Beenong Rd near the intersection with the Biddy Camm Rd.

Stop signs and Rail Crossing ahead signs have all been flattened by someone with too much time on their hands and not enough smarts to realise that this is still a functioning railway line and that there is a sweeping bend on one of the approaches so a bit of prior warning is important, particularly if you're not familiar with the road.

Locals say that occasionally a sign will get damaged when machinery is being moved but they haven't had anything like this before. The fact that the perpetrator has backed up to do the job speaks volumes.

Vandalism costs the West Australian government (that's you and I) \$25 million per year, imagine what worthwhile things that money could be spent on if we didn't have to clean up after antisocial behaviour.

Very little vandalism occurs in Lake Grace so it is both a shock and disappointing when it does happen.

CONTENTS

• Page 1	Vandalism Isn't Okay	Page 28	Puzzles and Stuff
• Page 3	Editorial	Page 29	Boost For Sport & Recreation Facilities
• Page 4	About Town	Page 32	On the Job at the Perth Mint
• Page 5	Containers for Change	Page 33	Cricket Notes
• Page 7	P&C - A Valuable Resource for Schools	Page 34	Online Tax Schemes on the Rise
• Page 9	Men's Health - Returning to Work	Page 36	Classifieds
• Page 10	Weather	Page 37	Town Information
• Page 12,13	Financial Information Service	Page 38	Community Calander
• Page 14	Book Review		
• Page 16	Art Space Notes		
• Page 17	Police Page		
• Page 18,19	Good News Page		
• Page 21-25	Shire Pages		
• Page 26,27	ICPA		

LAKES LINK NEWS

2025 Advertising Rates

	Standard	Members	NFP	NFP Members
Classified	\$1 per line	FREE	FREE	FREE
1/8 page	\$14	FREE	FREE	FREE
1/4 Page	\$20	\$16.50	\$16.50	\$13.50
1/2 Page	\$35	\$27.50	\$27.50	\$22
Full Page	\$60	\$50	\$50	\$37.50
Insert (d/s)	\$50	\$40	\$40	\$35
Thank You's	FREE	FREE	FREE	FREE
Editorial	FREE	FREE	FREE	FREE
Colour Full Page	\$200	\$165	\$165	\$150
Colour Half Page	\$120	\$90	\$90	\$80

Conditions do apply.


CRC Opening Hours
 9am - 5pm
 Closed from midday to
 1pm for lunch when short staffed.

Deadlines and Editions

All articles, news and advertisements are to be submitted to the Lake Grace Community Resource Centre by 3pm on Monday of paper week.

Next Deadline
 Monday 24th February

Next Edition
 Thursday 27th February



To the **very** dedicated team who volunteered their time to this edition of the Lakes Link News.
 Thank you also to our many contributors of articles.

Annie Slarke

DISCLAIMER

- 1) No liability shall be incurred by the Lakes Link News by reason of any amendments to, or error or inaccuracy in, or the partial or total omission of an advertisement or by reason of delay or default or from any other cause whatsoever. If in the opinion of Lakes Link News the error clearly reduces the value of the advertisement and the advertiser notifies it to Lakes Link News within seven days of the publication date, then one correct insertion will be made without charge.
- 2) While the Lakes Link News aims to publish all material submitted, Lakes Link News reserves the right to refuse to publish or re-publish any contribution or advertisement without giving any reason.
- 3) No articles, letters or advertisements will be accepted which may appear to be defamatory or accusatory, or to favour one side in a legal dispute.
- 4) Lakes Link News reserves the right to shorten or otherwise amend any contribution other than advertisements.
- 5) The opinions, views and beliefs expressed in articles and other submissions to the Lakes Link News do not necessarily reflect the opinions, views or beliefs of the CRC staff or Committee.

260 copies circulated each fortnight

Editorial

- The Harvest Festival committee have had their second meeting but will be getting together again on Wednesday 12th March at 6pm. This opens it up for anyone who can't make it during the day. If you would like to be involved then please come along, the more the merrier.
- We do have some workshop dates for 2025:
 - Working @ Heights - 27th Feb
 - Working in Confined Spaces - 28th Feb
 - Auschem - 13th/14th March.
 - Forklift - 1st /2nd April
 If you would like to book in for any of these then please contact the CRC. We definitely need more names if these workshops are to go ahead.
- Of course we also have our INDY (I'm Not Dead Yet) information session on Thursday 20th February. RSVP's are essential for catering purposes. Our target audience is anyone over 40 but everyone's welcome.
- I'm pleased to say I have a date for Centrelink's Mobile Office coming to Lake Grace; they'll be here on Wednesday 12th March from 9am to 4pm. They will also be in Newdegate the day before on Tuesday 11th March. This is a perfect opportunity to sort out any of those little problems you may have with either Centrelink or Medicare.
- Coming along with the Mobile Service Centre is a Financial Information Services officer who would love to have an opportunity to talk to the locals. I will have more on this for the next paper. This service is for all ages. We will have a presentation at the CRC in the morning of the 12th and the FIS officer will be available for one-on-one sessions at the Mobile Service Centre in the afternoon.
- Coming up on Monday 17th February is our next Town Teams meeting, we will hold it at 6pm at the Hotel and attendees are more than welcome to grab a feed. We have Gabby Major, the coordinator of Town Teams for our region coming along to facilitate. Our first meeting was loose but this one will have more rules. Remember this group works alongside the Development Association and is all about garnering ideas.
- Lego Club will be restarting on the 12th February, if you haven't already registered your Lego enthusiast then please get in touch with Evelyn and fill in all of the appropriate paperwork.
- Is anyone interested in being a part of a Walking Group? This is for all ages. Please touch base with staff at the CRC if you think this could be something for you.
- We have been successful in getting funding to show the movie 'Only A Farmer', we are yet to work out a date as to when we would hold it.
- Don't forget crochet is back up and running every Friday from 10am to midday. The fairies seem to have done a fresh delivery of yarn.

Suzanne Reeves

Working @ Heights

Thursday 27th February

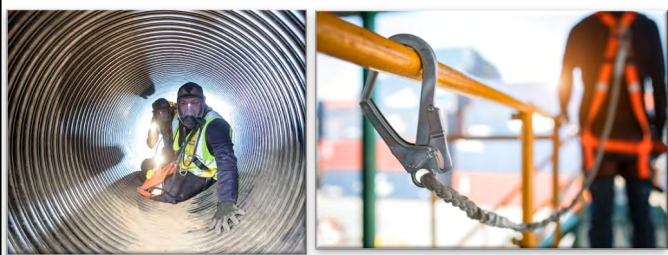
Cost: \$77 (\$37 TAFE, \$40 CRC)

Working in Confined Spaces

Friday 28th February

Cost: \$77 (\$37 TAFE, \$40 CRC)

Places available in both of these TAFE accredited workshops. Please ring the Lake Grace CRC on 9865 1470 or email central@lakegracecrc.net to book your place.



Lake Grace Town
Teams Meeting

Lake Grace Hotel
(Dining Room)

Monday 17th February
@ 6pm



About Town

- Congratulations to Joyce Gilson who celebrated her 96th birthday with family and friends last Sunday. By all accounts a good time was had by all. Photos supplied by Trish Medlen

Below: Five generations of 'the girls' in Joyce's family; pictured are [at back] Kaylee Jones (great great grand daughter), Monique French (granddaughter), Demi-Lee Tomkins (great granddaughter) while at front is the birthday girl herself with her daughter Lorrie Carter.



Below: Joyce Gilson with her daughters Heather Starceвич and Lorrie Carter.



Happy Birthday



- 13th February Lucas Robinson
- Jessica Collard
- 15th February Michaela Stoffberg
- Fiona Palmer
- 16th February Sharon Robinson
- Faye Ormerod
- 17th February Nicole Argent
- Heath Lewis
- 19th February Louie Gray
- 21st February Kaitlyn O'Neill
- 22nd February Mitchell Gooding
- 23rd February Dean Giles
- 24th February Colin Connolly
- 25th February Mitchell Smith
- Michelle Lay
- 26th February Geoff Desmond
- 27th February Chris Trevenen (snr)
- Reid Stubberfield
- Sara Bray
- Tyson Prater

Anniversaries



- 14th February Chris & Amanda Trevenen
- Jamie & Felicity Slarke (5)
- 19th February Steve & Helen Hunt
- 21st February Des & Claire Pelham (10)
- 23rd February Brenden & Tor Desmond
- 25th February Bill & Carol Willcocks
- 26th February Jean & Kevin Seaman
- 27th February Reuben & Yasmine Smith

THANK YOU!

Joyce Gilson would like to THANK everyone who came and had morning tea with her on Sunday to celebrate her 96th birthday it was lovely to know how many of you care.

THANK YOU to Amy for making me my cake it was awesome. Also thank you to all who helped organise the morning tea.

Over Seven Million Containers and Counting

By Norm Chilcott

Year on year the amount of containers being saved in our region is growing and this is putting money back into the pockets of the many organisations and individuals in our region.

The total figure at the time of preparation of this article was 7,005,155 from our region alone.

All Good Refund Centre is happy to be serving our community in this way, by travelling hundreds of kilometres every week to pick up your items.

The management of the State Government organisation WARRRL behind the Containers 4 Change program, is continually astonished by the number of items that we send in on your behalf, thank you.

The area that we cover is growing regularly and we anticipate this growth will continue.

We know that the majority of our clients are amazing in sorting and checking the eligibility of items sent into our depot, however a small number of clients are sending in a lot of ineligible items and we need to dispose of these at our expense.

Every week we pay for the collection of 2 x 1000litre

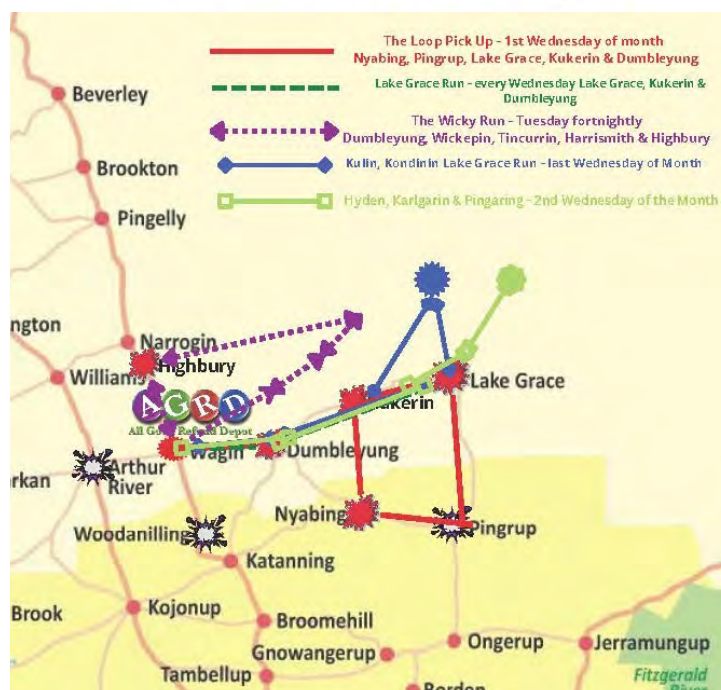
Sulo (wheelie) bins of cardboard to be recycled as well as 6 x 240 litre Sulo (Wheelie) bins of non-recyclable rubbish, this is a direct cost to our family run business.

As our business grows we must tighten our rules when operating in the shed to ensure the safety of our staff, volunteers and clients. These rules and guidelines are there for the benefit of all and if while visiting our premises you are asked to comply with these rules please understand that this is in your best interest.

Our collections are done fortnightly on a Tuesday for the Wickopin, Tincurrin, Harrismith, Dumbleyung and Yealering runs. Lake Grace and Kukerin are weekly with monthly pick ups from Nyabing, Pingrup, Hyden, Kondinin, Kulin, Karlgarin, Pingaring and as required from Williams, Arthur, Dudinin, Woodanilling and Beaufort River.

We also are happy to do on property pickups if you are located on any of our pickup routes you can even book a 'Collect' via the Containers for change app, which is such a cool tool.

We are so proud of how we continue to grow and our business could not do this without your continued support and for this we thank you.



We have regular pick ups from Lake Grace, Kukerin, Dumbleyung, Nyabing, Pingrup, Wickopin, Tincurrin, Harrismith, Highbury, Kulin, Hyden, Karlgarin and Pingaring.

Find out more about our drop points 0439 956 175.

Bulk pick ups can be arranged on farm anywhere along this route.

All Good Refund Depot is serious about stopping containers from going into landfill.

Pick ups from Lake Grace is **now weekly!** with check in stops at Kukerin and Dumbleyung.

Call us to find out more 0439 956 175 or email allgoodbusiness@westnet.com.au

Proudly servicing Lake Grace and the extended lakes region since October 2020.



Thursday 20th February

10am - 3pm

@ Lake Grace CRC

Topics covered include:

- Funerals - planning the sendoff you want
- Wills, Enduring Power of Attorney, Health Directive - having a say in your future
- Finances - Succession planning, gifting
- Advocare - Understanding your rights
- Mental Health - grief, depression and self care

Lunch will be provided. This information session is for anyone 40+; could be information you need for yourself and also for aging family members. Only 30 places available.

Please register with the CRC on 9865 1470 or email
central@lakegracecrc.net

P&C – A Valuable Resource For Schools

Suzanne Reeves

Like many volunteer-based organisations P&C's are struggling for numbers and Lake Grace is no different from any other Parents & Citizens group within WA; some schools don't even have the benefit of a P&C raising funds for those extra resources.

Everyone has their strengths and everyone can contribute. You may not feel confident in balancing the books but may be a guru at selling raffle tickets; it's having this variety of skills that complement each other that can make any community group a force to be reckoned with.

Nikki Lewis has been President since 2021 but started her P&C journey years prior when her eldest son started Pre-Primary. She took over the role from Amanda Trevenen who had done over 10 years on P&C in a variety of roles.

It's generous to give so many years in a voluntary capacity however it has direct benefits to your children so this is the impetus to keep on doing! P&C will hold their AGM on the 24th February with all positions being up for grabs.

Losing all of the executive makes it especially important that parents will step up to take on roles to be able to support each other through the learning journey of running a P&C. Having said that both Nikki and Kelly Callope (who has filled the Treasurer role for 8 years) will be available to provide any assistance.

P&C are in desperate need of a Secretary, this role has been vacant since Elizabeth Castaldini relocated from Lake Grace; it is challenging for one person to take on two roles but Nikki has been doing just that in the interim.

Although Nikki is stepping back she has enjoyed being a part of the P&C for the following reasons:

- meet lots of new people who I might not usually have much to do with, especially when volunteering in Canteen
- learn lots about the school and have the opportunity to ask questions, provide feedback and discuss ways we can improve our school at meetings
- help with fundraisers and community service activities to help improve our school
- have a say on how P&C funds are spent and what is purchased for our school/ students

I think any of us who has done their time on the P&C, or in fact any committee, can identify with the 'feel good' buzz that you get out of being a part of something.

So what does the P&C do?

- Our P&C strives to improve our school for our current and future students and asks that if anyone has any ideas on how we can achieve this goal.

- Anyone is encouraged to come along to any meetings or discuss with a P&C committee member. It isn't all about fundraising, we are here to support our school, its staff, students and their parents. P&C regularly help at school sporting events and other initiatives to connect students, teachers and staff and help make school fun and enjoyable.
- P&C also runs school canteen and uniform shop
- What did P&C do in 2024?
- Purchased and installed a new oven in the canteen
- Raised over \$2,000 from the Easter raffle and First Aid kit fundraisers
- Donated \$13,000 towards motorised blinds for the new kindy/ pre-primary building
- Purchased items off the classroom teacher wish lists (art smock stands, books, blinds, and contributed funds to the puppet theatre workshop)
- Provided catering for a seniors lunch and Rabobank at Newdegate Field Day
- Purchased a new set of Country week jackets and interschool shirts
- Worked with secondary Home ec. class to run the canteen

Some positions have been filled for 2025, Debb Carruthers is the new uniform shop coordinator and Elise Bell and Chloe McDougall have volunteered to take on the canteen coordinator role (we might all be ducking over to the canteen for lunch).

Now we're all busy with family, work and other community commitments however with 75 families currently having children enrolled at the school there should be no shortage of people to fill positions or even simply attend and give their support. Nikki strongly believes that if everyone does a little bit then together our P&C can achieve great things.

Local Containers for Change ID Numbers

Don't want to collect for yourself but want to give to a local organisation, then here's your chance.

Lake Grace Golf Club - C10455139

Lake Grace DHS - C10364782

Lake Grace Sportsman's Club - C10379797

Lake Grace Lions Club - C10477141

R.F.D.S - C10336670

LG Community Men's Shed - C11555914

Rather than your cans going into landfill then consider directing them to any of the above organisations. Recycling is better than nothing but remember that money goes to a business out of Lake Grace.



Services
Australia



Australian Government mobile service centres

Serving regional Australia

Visit the mobile service centre to find out about Australian Government payments and services for rural families, older Australians, students, job seekers, people with disability, carers, farmers and self-employed people.

We can also help veterans and their families connect to the Department of Veterans' Affairs phone line and online services.

Staff can provide you with information and support. They can also help you create a myGov account. myGov is a simple and secure way to access government services online.

Wednesday, 12 March 2025

9 am to 4 pm

Near the playground, Stubbs Street

LAKE GRACE



For more information, go to servicesaustralia.gov.au/mobileoffice

Returning to Work – Getting Ourselves Back on Track

The Regional Men's Health Initiative - P: (08) 6314 1436 - E: menshealth@4blokes.com.au

After we have returned to work, the kids have headed back to school and the holiday season is well and truly behind us, it's healthy to ask ourselves the question, how am I feeling? Am I happy to be back, energised and ready to tackle another year or am I feeling a little out of sorts?

Often referred to as the *back to work blues* or *beating the holiday hangover*, returning to work can be an overwhelming and challenging time for us. Whether we are back in the office, on the farm, in the truck, back on site or responsible for the never-ending household chores and important caring duties of children, elderly parents or family. The circumstances are different for all of us, however an important part of self-care is checking in on how we are travelling and being aware of how we are feeling.

What is our state of mind after returning to work? Feelings one could expect to experience may be:

- Regret – I should have taken more time off.
- Overwhelmed – Where do I start? There is so much to do!
- Worry/anxious – What will this season/year bring?
- Jealous/resentment – I'm back at work, the other party (wife/husband/colleague) is still on holidays.
- Lack of motivation – *After being off work for so long I forgot what it is that I pretend to do around here* (ha-ha).

Some useful tips that may help to beat the back to work blues are:

- *Be realistic*: Don't put too much pressure on yourself. Don't expect everything to be done in the first week. Set achievable goals. Give yourself some space to ease back into the swing of things.
- *Prioritise*: Looking at everything that needs to be

done can cause us to become overwhelmed. Make a list, break things down into manageable tasks. Recognise your achievements.

- *Don't feel guilty*: If you overindulged, enjoyed a bit too much Christmas cheer, or just did nothing. Accept the break for what it was, it's been and gone. It's time to look forward.
- *Get back into routine*: One reason we may be feeling worse for wear, is because we have been out of our regular routine. Try to start working on this as soon as possible. Three important areas: *Diet, sleep and exercise*. It's amazing how much better we can feel if we get some balance back in these areas.
- *Communicate how you feel*: Talk to your kids, partner, wife and/or work colleagues. Everyone is probably feeling a bit hungover. Don't feel isolated and alone.
- *Normalise your reaction*: Remember feeling a little flat can be a normal reaction after holidays.

Holidays are an important part of managing our wellbeing, now it's time to get back on track and get energised for another big year.

Katanning Vet Clinic



Phone: 08 9821 1471
Fax: 08 9821 1473
A/H Emergencies: 0427 017 462
3/114 Clive Street
PO Box 841
Katanning WA 6317

www.kojonupvethospital.com.au
kvc@kojonupvethospital.com.au



ABN: 72 616 138 172 EC: 010433

**Electrician Servicing Lake Grace,
Newdegate, Pingrup, Varley and
Surrounding Areas.**

**Phone Alistair on
0427 339 472
for a free quote.**

**For all your electrical,
air-conditioning and solar power
needs give Alistair a call.**

Email: alistair@tigersparkelectrical.com.au
Website: www.tigersparkelectrical.com.au

Lake Grace Weather

Date	Min	Max	Rain
29/01	16.0	36.2	
30/01	16.4	39.6	
31/01	24.6	43.8	
01/02	16.9	32.7	
02/02	15.8	37.3	
03/02	16.8	30.8	
04/02	15.8	32.6	
05/02	15.7	37.9	
06/02	18.6	31.7	
07/02	18.2	32.3	
08/02	17.2	36.6	
09/02	22.5	37.3	
10/02	15.5	33.7	
11/02	18.0	28.4	



Come in and see us for all your meat supplies!
 Food for all the family
 Custom kills
 Cooked chooks available every day



Open
 Monday - Friday 8:30am - 5:30pm
 Saturday 8:30am - 12pm

Located in Lake Grace Plaza
 Contact Dean Sounness: 9865 1225



Defibrillator Locations in Lake Grace

- **Liberty Roadhouse** - cnr Stubbs St/South Rd publicly accessible AED
Open 7 days 6:00am - 8:00pm
- **IGA - Lake Grace Plaza** - Stubbs St publicly accessible AED
Open 7 days 6am-7:45am 8:30am-5:30pm
- **St John Ambulance sub centre** - Stubbs St (accessible 24 hours a day)
- **Sporting Pavilion** publicly accessible AED when pavilion is in use
- **Lake Grace Police Station** - Stubbs St (accessible 24 hours a day)
- **Lake Grace Men's Shed** - Bennett St. (accessible 24 hours a day)
- **Lake Grace Swimming Pool** - Bishop St publicly accessible AED during opening hours
- **Lake Grace Sportsman's Club** - Stubbs St (accessible 24 hours a day)
- **Lake Grace Caravan Park** - Mather St accessible 24 hours a day)
- **Lake Grace CRC** - School Place (accessible 24 hours a day)
- **AFGRI** - Absolon Street (accessible 24 hours a day)
- **Lake Grace DHS - School Place** (accessible 24 hours a day)
- **Saltbush Inn - Griffiths St** (accessible 24 hours a day)

Dial 000 for emergencies.

If you are responsible for a defibrillator or have one in your building be mindful that the pads need to be in date and battery may be running low (may beep). If you have any questions contact Debbie Carruthers at the Lake Grace Sub Centre on a Tuesday or Friday on 0428 110 446.

FREE Showerhead Swap

Join the thousands of WA households who have already made the swap.

Switching to water efficient showerheads could save you up to 20,000L of water each year. With our free showerhead swap programme, you can exchange up to two of your old, inefficient showerheads for new WELS 4-star rated models.



APPLICATIONS NOW OPEN!

Have you seen any of these?



Carnaby's Black-Cockatoo

The iconic Carnaby's cockatoo is known as the bringer of rain. This is probably related to their habit of returning to the Wheatbelt in winter to breed. Did you know they nest in tree hollows and only eucalypts around 150 years old have the right type of hollows.

Wheatbelt Woodlands

The Wheatbelt Woodlands include some of our iconic eucalypt woodlands such as Salmon gums, York gums and about 31 other species. We are working to protect patches of remnant bushland in good condition. Do you have your favourite patch of eucalypt woodland? Do you want to protect it and restore it?

Chuditch

Did you know this mammal has the title of being the largest carnivorous marsupial in WA? They are a very cryptic and largely nocturnal animal, most likely to be seen in and around woodlands and mallee shrublands in the Wheatbelt.

Applications are now open to protect Eucalypt Woodlands and Carnaby's black-cockatoos!

If you have Eucalypt woodlands and/or Carnaby's cockatoo habitat on your property that you would like to protect, **please submit an Expression of Interest via our website below.**

Funding is available to help cover costs of materials for activities such as fencing, feral animal control, weed control and revegetation. We will also be providing and installing nest boxes for Carnaby's and dens for Chuditch, in suitable habitat.

Applications close on the **1st of March**, so be sure to get your application in as soon as possible. Please contact **Kate at ksherlock@wheatbeltnrm.org.au** for more information.

www.wheatbeltnrm.org.au



Australian Government



wheatbelt
natural resource
management

This project is funded by the Australian Government Natural Heritage Trust and delivered by Wheatbelt NRM, a member of the Regional Delivery Partners panel.

How the FIS Can Help

The Financial Information Service will be in Lake Grace on Wednesday 12th March (when the Mobile Service Centre) is in town and will be giving a talk at the CRC.

Planning to retire well

FIS can talk to you about your retirement options. FIS can help you plan no matter when you plan to retire, tomorrow or in 20 years.

You can get information online or talk to a FIS Officer. They can show you ways to build a stronger financial future in retirement.

What FIS can do for you

- Help you understand different options to get your money working for you when you retire, like:
 - superannuation
 - income streams
 - annuities
 - allocated pensions.
- Explain how financial products work with government payments.
- Discuss your options for accommodation and downsizing.
- Discuss what to look for when choosing financial experts and how to use the information they give you.

Understanding aged care costs

FIS can help you understand your options to fund your aged care.

You can get information online or talk to a FIS Officer. They can explain how aged care costs are worked out. They can talk to you about home care, respite care and residential aged care costs.

What FIS can do for you

- Help you understand how the aged care system works.
- Explain the meaning of financial words used in aged care.
- Explain the aged care fees you can expect.
- Explain how aged care may affect your government payments, including the Age Pension.
- Talk to you about different options to pay for aged care based on your circumstances.
- Show you options if you're thinking about selling or transferring property.
- Help you understand your finances if your partner has died.

The Financial Information Service (FIS) provides free, independent and confidential education and information.

FIS is available to everyone, including people who are:

- Aboriginal and Torres Strait Islanders
- from a culturally and linguistically diverse background (CALD), including migrants and refugees
- living in a rural or remote area
- young, including students starting work
- older and considering retirement or accessing aged care
- women returning to the workforce.

FIS can help you make informed decisions about your finances. We can also refer you to other services and groups that can help.

What FIS can't do

- FIS Officers aren't financial planners, advisers or counsellors.
- They won't tell you how to invest your money.
- They can't deal with other agencies or businesses for you.
- They don't make decisions about your government payments.

How money works in Australia

FIS can help you understand how money works in Australia.

You can get information online or talk to a FIS Officer. They can show you how finances and government services work together and how you can improve your situation.

ADVERTISEMENT



Contact me to discuss State Government matters – let me know what is important to you

Hon. Shelley Payne MLC

Member for Agricultural Region

92 Dempster Street, Esperance WA 6450

📞 9072 1786 📧 ShelleyPayneMLC

✉️ shelley.payne@mp.wa.gov.au

Authorised by Shelley Payne, 92 Dempster Street Esperance WA 6450

How the FIS Can Help *(cont.)*

What FIS can do for you

- Explain the following and how they work together:
 - social security
 - tax
 - wages and salary
 - superannuation
 - budgeting
 - credit, loans and debt
 - investments, risks and returns.
- Help you understand how these can work for you and what your options are.

Taking control of your money when you start work

FIS can give you information about building your financial future when you start or return to work.

You can get information online or talk to a FIS Officer. They can show you different ways to build up your savings and achieve your money goals.

What FIS can do for you

- Help you understand: how to budget and save money
 - how working affects your payments and benefits

- superannuation and why it's important
- how income tax is worked out
- different types of loans and how to use credit well
- different types of financial investments, risks and returns.

Making your lump sum payment work for you

FIS can help you understand your options when you get a lump sum. This can be an inheritance, a compensation payment or a redundancy.

You can get information online or talk to a FIS Officer. They can show you different ways to use your money to build a more secure future.

What FIS can do for you

- Help you understand how different types of lump sum payments may affect Centrelink payments.
- Talk to you about the different options to use your lump sum including:
 - investing
 - superannuation
 - providing an income.



120 FEDERAL STREET, NARROGIN | 21 RICHARDSON STREET, KATANNING

08 9881 1161

WWW.DAWSONSFUNERAL.COM.AU

Book Review: Intermezzo by Sally Rooney

Evelyn Oatridge

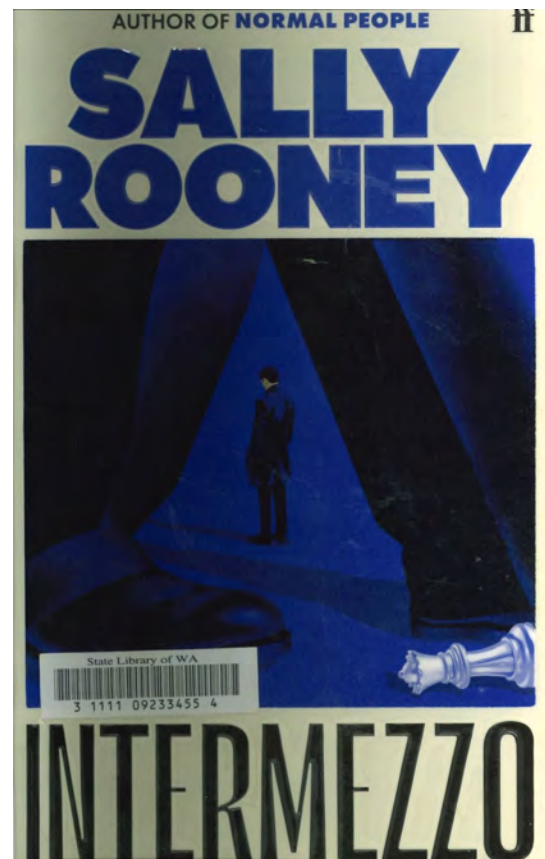
Aside from the fact that they are brothers, Peter and Ivan Koubek seem to have little in common.

Peter is a Dublin lawyer in his thirties - successful, competent and apparently unassailable. But in the wake of their father's death, he's medicating himself to sleep and struggling to manage his relationships with two very different women – his enduring first love, Syliva, and Naomi, a college student for whom life is one long joke.

Ivan is a twenty-two-year-old competitive chess player. He has always seen himself as socially awkward, a loner, the antithesis of his glib elder brother. In the early weeks of his bereavement, Ivan meets Margaret, an older woman emerging from her own turbulent past, and their lives become rapidly and intensely intertwined.

'Intermezzo' is Sally Rooney's latest novel, and I for one think it has lived up to the hype it received. A deep dive into the lives and minds of the two Koubek brothers and how they cope with grief, and the ever-changing relationships in their lives. Written from the perspectives of Peter, Ivan and Margret, Rooney is wonderful at creating and really fleshing out the characters, and their own personal experiences.

Pop into the Library and give it a read yourself.



Ballard Cleaning

Pasture Seed and Canola Specialists

North Road Tincurrin

Canola cleaning and seed treatments at the best price

Gravity grading, the ONLY way to get the best quality seed for sowing

Bags, bulka bags or bulk New bulka bags

1000 seed count and germ tests

Pasture seed, all species and varieties

Serradella de-hulling specialists

Destoner for removing sand and stones

NEW Colour sorter

Bookings by appointment

0428 832 053



The difference between ordinary and extraordinary

is that little bit extra



Government of Western Australia
WA Country Health Service

wacountry.health.wa.gov.au



Could you be our next Wheatbelt legend?

WACHS Wheatbelt have several positions available and we are actively looking for suitable applicants.

- **Clerical Officer at the Lake Grace Hospital (part-time)**

Benefits include generous salary packaging and superannuation, study days, professional development opportunities, career pathways and flexible working arrangements.

Want to know more about what's on offer today?

Contact Lisa Pearce, Health Service Manager, Lake Grace on (08) 9890 2222 for any help you might need OR

Visit www.jobswa.gov.au or www.health.wa.gov.au/careers



Lake Grace Artist Group

AIM Visit

We are visiting the AIM hospital on Thursday the 27th February for research and development of ideas for our exhibition in 2026 to coincide with the 100years celebration of our Inland Mission hospital.

This new work will combine with some of the works from our exhibition a few years ago 'No hospital for Miles' and this is still the case.

If you are a visual artist, performance artist, writer, poet, musician who would like to be part of this exhibition and event, you're welcome to come join the lake grace Artist group at the AIM hospital and be inspired

Come along at 9.30 on the 27th February (the Australian inland Mission Hospital is up behind the Lake Grace Hospital)

We will follow this visit with a discussion and lunch at Walkers Hill Winery. Then followed by our general meeting.

If you are interested in coming please text me. To book lunch by Monday 17th at the latest. 0447791399.

All members are reminded to let me know if you are coming as well.

MARCH WORKSHOP

Our next big Workshop will be the last weekend in March 29th, 30th and 31st, with Anne Leon, from Queensland. we will be covering creating sun processed silk screens, steaming botanical prints and more.

This workshop is open to members and other interested people. Look for the adds coming out soon.

5x9 exhibition is coming up soon. All of the community including school students, are invited to participate in this exhibition, boards are available at the post office but it's okay to be just on paper or a small sculpture as long as it's 5"x9".

New members

New members are always welcomed into our group, we are a multi skilled eclectic group of Artist, always open to all art forms

Meetings are 9.30 to 2 every third Thursday of the month, general meeting is from 12.30 until we are finished.

If you are interested come along and join in for the day and see what is happening. Lake Grace Regional Artspace.

Your Local Summit Area Manager can help you grow your farm's future

- Soil & Plant Tissue sampling & interpretation.
- Product recommendations based on nutritional requirements.
- Access to local Field Research trials & data.
- N-Shield - Urea inhibitors.
- Fuel & SAT Gauges.
- CropX Soil Moisture Probes.
- UAN and MaxamFLO tank monitors.
- Summit Connect - Customer Portal.

Contact your local Area Manager for more information



Brett Coxon
Lake Grace
0427 765 506

www.summitfertz.com.au



PARTNERS in GROWTH

The team at Summit have worked closely with customers for over 35 years to support them in getting the right advice. Our team of experienced Area Managers are on hand to make sure you get the best return out of your investment. Our unique products like MAPS2C, DAPS2C and Vigour provide all the nutrients a crop needs early, in the one granule.



POLICE NEWS

LAKE GRACE POLICE STATION
56 STUBBS STREET, LAKE GRACE. 6353
Phone : 9890 2000 Fax : 9865 1429

Email: Lake.Grace.Police.Station@police.wa.gov.au

Personnel: OIC Wade Bambling, S/C Scott Oatridge, P/C Simon Blundell

STATION NEWS

Well, the summer holidays already seem like a lifetime ago, the majority of us are well and truly back at work and school.

We were fortunate to have Police Officers from Katanning assist us whilst we took it turns to take some annual leave, by the time you read this we should be back to full strength.

CRIME NEWS

The summer period historically correlates in an upturn in crime rates throughout the State, unfortunately our towns are no exception to this.

Assaults seem to be a popular past time amongst a cohort of individuals in our community, alcohol being a strong common denominator in these incidents. Assaults on any person should not be tolerated at all.

We have also had a few stealing matters reported to us, one individual has been charged, they also received a Banning Notice prohibiting them from entering a business.

Another incident involved a suspect stealing number plates from a parked vehicle, and affixing them to their own vehicle. The suspects' vehicle was later identified traveling through Cocklebidy heading towards the State Border with South Australia. Further investigations identified that the suspect is wanted for outstanding warrants and questioning for serious offences.

Please don't be complacent in your attitude towards security of your home and property. Our towns are on a busy arterial route, this brings a lot of unsavoury characters through our community, many looking for opportunistic crimes.

Reports have been received regarding damage to signage on BidbyCamm Road, the damage has been sustained by being shot.

Its unclear if it is deliberate or not, please be aware of firearm safety and your responsibilities.

(9) A person commits an offence if the person —

(c) without lawful excuse, discharges any firearm or any shot, bullet, missile or other projectile from a firearm, onto, from or across any road;

Penalty for this subsection: (a) for a first offence, a fine of \$2 000; (b) for a subsequent offence, imprisonment for 12 months or a fine of \$4 000.

TRAFFIC NEWS

The holiday period brought the usual increase of traffic on our roads; when not investigating crime, we were out on road enforcing the road rules and conducting Random Breath Tests.

One motorist had their hire car impounded due their reckless speed of 164kmph. Legislation deems if you drive at or over 155kmph; or 45kmph or more over the posted speed limit then it is Reckless.

Stay safe and vigilant
Regards
Lake Grace Police.



Seaton Willcocks

Structural Steel Fabricators

0455 565 178

willcockssteelconstruction@outlook.com

Good News Page

Kevin Seaman

Well January 2025 came and went and was done and dusted. Hello February, a month to stabilize ourselves once again.

What with family holidays over, Dad back at work, Mum having the house mostly to herself (with just the baby home) and !! the kids back at school "Wednesday February 5th", and a batch of newbies with their first taste of school and teachers.

Let's post our annual quiz/answers to at least give them a start to make them look good and for their Mum's and Dad's to know the right answer.

Pen and pencils at the ready, here we go.....

1. Who painted the Mona Liza?
2. What is the national sport of Japan?
3. What is the largest planet in our Solar System?
4. What is the largest desert, which is not covered in sand?
5. What ocean is the largest in the world?
6. What element is represented by the chemical symbol "FE" ?
7. What is the largest land animal?
8. What is the tallest mountain in the world?
9. What do you call a baby butterfly?
10. What has a thumb and four fingers, but not a hand?

11. What is the most widely spoken language in the world?
12. How many continents are there on Earth?
13. What is the opposite to "expand"?
14. What event led to the United States entering World War 11?
15. What is the smallest unit of matter?
16. What is the largest organ in the human body?
17. What is the chemical symbol of gold?
18. Which sport uses the terms "Birdie and Eagle" ?
19. What's is the world's largest social media platform?
20. How many players in a standard Soccer team?

And the last 5 questions require you to pick the right answer from the 3 given.

- A. How many legs does a spider have?
1. Six 2. Eight 3. Four
- B. What is the main diet of a panda?
1. Bamboo 2. Grass 3. Gum leaves
- C. Which bird is often associated with delivering babies in folklore?
1. Eagle 2. Crow 3 Stork
- D. What is the smallest bird in the world?
1. Gouldian finch 2. Bee hummingbird
3. Swallow
- E. How many hearts does an Octopus have?
1. Three 2. One 3. Two

And a good old Aussie poem written by William Thomas Goodge (1862-1909) and sung by Brian Letton and recorded on one of his country albums.

The Shearers' Cook

It was a big flash city pub,
Renowned for its cuisine,
That hired one Jasper Johnson,
Long time cook in Pinchem's team.

He'd spent the last two decades,
With the shearing teams out back,
But his cooking got that rugged,
Pinchem gave J.J. the sack.

So to the city he had come,
To make a brand new start,
To drink some booze and then pursue,
His culinary arts.

Now the cook at this five star hotel,
Had snatched his rent and left,
And so for want of better,
They made Jasper Johnson chef.

When asked if he was "cordon bleu"
Jasper had a fit,
I've seen this fancy cooking mates,
I'll have no part of it.

I will not bake them layer cakes,
Nor hairy fairy scones,
Make no mistake my "potted snake"
Will really turn you on.

STUBBY'S ELECTRICAL PTY LTD T/AS

OUTBACK

LIC NO EC 004197



For all your domestic, rural and industrial electrical installations and repairs.
Split system air conditioning installation and decommissioning.
Large range of Australian brand LED floodlights, downlights, hibays and fluorescent replacements.
Ditchwitch hire and cable location.
With over thirty years experience in Lake Grace and surrounding areas contact Reid at anytime.

Reid 0429 651 069
Email stubbyselectrical@bigpond.com

LIC NO :EC004197 RTA NO :AU29828

Good News Page *(cont.)*

I'll have no truck with humble duck,
The chicken I despise,
The bird I favour most says he,
Has drum sticks twice the size

Oh your mouths will fairly water,
When this beauty I bring forth,
Yes Japer Johnson's table birds,
Are well renowned up north.

That night a wire went humming north,
To someone known as "Blue",
Am in the catering business mate,
Send down a prime emu.

And I want to cook an entrée,
That will melt clean off your fork,
And so if youse can catch one,
Send me down some "nor west pork"

I'll marinate the coot in plonk,
Then baste him with me hammer,
Oh won't they lay their ears back,
To a lump of choice goanna.

Friday night the Cocktail room,
They danced to tenor sax,
While Jasper in the kitchen,
Carved his emu,
With an axe.

They said they'd like it "a la carte",
And Jasper said "okay",
But as me bird is kind of large,
I'll use me team and dray.

The entrée on the table sat,
Six feet of nor west pork,
A greedy swine came sneaking up,
And jabbed it with his fork.

He shook his head in disbelief,
"It's go to be the booze,
But I swear that when I prodded it,
I saw the damn thing move".

It moved alright,
They screamed with fright,
And to the four winds scattered,

As down the table it did race,
Encased in Jaspers batter.

With Jasper yelling from the door,
Don't make the blighter puff,
You'll do nothing for the flavour,
And the sprint will make him tough.

The manager had heard the screams,
And he came on the run,
Says Jas "It's just me entrée boss",
A trifle underdone.

I know what must have happened,
It's these light weight shearing boots,
I didn't kick him hard enough,
And only stunned the coot.


Now if you're ever dining out,
And crave some fancy dish,
Just stick to things that you can trust,
Like steak and eggs, or fish.

And if somewhere on the menu,
There's a dish called nor west pork,
I'll give you some advice my friend,
Don't jab it with your fork.

Yes treat it with great caution,
And if you fear the worst,
Just grab a gun and take good aim,
And shoot the damn thing first.



Lake Grace CRC is a Services Australia Access Point



Services Australia Customers are able to:

- Access a self service terminal for their MyGov account (Centrelink, Medicare, ATO)
- Print off documents
- Use the telephone / fax
- Access Internet

All free of charge for Services Australia Business

Answers for Quiz

1. Leonardo Da Vinci
2. Sumo wrestling
3. Jupiter
4. The Antarctic Desert
5. Pacific Ocean
6. Iron
7. Elephant
8. Mount Everest
9. Caterpillar
10. Glove
11. Mandarin Chinese
12. Seven
13. Contract
14. The Bombing of Pearl Harbour Dec 7th 1941
15. Atom
16. Skin
17. Au
18. Golf
19. Facebook
20. 11
- A. Eight
- B. Bamboo
- C. Stork
- D. Bee Hummingbird
- E. Three

AGRISKILLS ROUNDTABLE

SHAPING CAREERS, GROWING OPPORTUNITIES

TUESDAY, 18 FEBRUARY 2025

9.30AM FOR 10.00AM – 2.00PM

FREE EVENT INC LUNCH

MUSESK INSTITUTE

1 Muresk Rd, Northam

Join us on a journey to help shape the future of agriculture careers!

This roundtable event hosted by the Food Fibre & Timber Industries Training Council of WA Inc in partnership with Central Regional TAFE is your opportunity to:

- ❖ Influence the future of agricultural education and workforce development
- ❖ Network with industry leaders, educators, and policy makers
- ❖ Contribute to strategies that grow career opportunities in agriculture.

Key presenters are:

**Brad Armstrong, Manager Workforce
Capability, DPIRD
WA Primary Industry Workforce
Development Strategy**

**Andrew Horgan, Stakeholder
Engagement Manager, Skills Insight,
Agriculture Trade Apprenticeship**

**Ros Hegarty, Portfolio
Manager, Central Regional TAFE
Opportunities at CRTAFE**

RSVP by: Friday, 7 February 2025
Email: diane@fftite.com.au
(please indicate dietary requirements)
Phone: 0419 292 404

Shire of Lake Grace

ISSUE 02 2025



Lake Grace ○ Newdegate ○ Lake King ○ Varley ○ Pingaring

Community Development & Events

The Shire has hit the ground running in 2025 with planning and preparations well underway for a number of community projects.

In December we announced that we were successful with the following grant applications:

- Department of Communities - Community Gardens Grants Program
- Heritage Council of WA Community Heritage Grants Program - AIM Hospital Museum Project (Stage 1)
- Community Sporting and Recreation Facilities Fund (CSRFF) - Newdegate Bowling Club Green Reconstruction and Resurfacing Project
- Youth Week WA 2025

The Department of Communities - Community Gardens Grants Program has seen the Shire awarded \$10,000 towards a community garden in Lake Grace.

The project is a youth-led initiative that came about as a result of youth forums held at the Shire in 2023, and the newly formed Youth Advisory Committee.

CWA Lake Grace Branch has generously allowed the land where the old playground was located, to be turned into an edible community garden that will be open and accessible to all. The old playground equipment will be repurposed in the garden as support structures, decoration or similar.

We have some eager youth in town who are keen to learn some new skills in gardening and horticultural practices. The grant funding will be used to train and upskill youth and volunteers, and to purchase materials to assist with establishing the soil, garden, irrigation and composting systems.

For a community garden to be successful and sustainable, it needs to be supported by the wider community. We are in the very early stages of site planning, and would love to hear from anyone keen to be involved, especially some of our experienced local gardeners and tradespeople who would like to pass on their knowledge and skills.

If you'd like to be involved, or have ideas on establishing the garden, please get in touch with Community Economic Development Officer, Aimee Turnbull.

continued on page 2...

Next Council Meeting

3.30pm, Wednesday 26 March

A minimum of 15 minutes is set aside for public question time, giving community members an opportunity to ask questions relating to Shire activities. All welcome.

Upcoming agendas, and minutes from previous meetings are available for public viewing at: www.lakegrace.wa.gov.au

the growing centre

Shire of Lake Grace, the growing centre

The Shire has also been successful with another Youth Week WA grant application. We are excited to bring Youth Week back to Lake Grace after the success of last year.

We will kick Youth Week WA 2025 off with a Blue Light Disco at the Lake Grace Town Hall on Friday 11 April 2025. This event will be open to Year 4 and above.

On Wednesday 16 April, the Shire will host the 'Lakes Youth Challenge' for youth aged 10 - 17 years. It will feature a range of activities designed to challenge youth physically and mentally, encourage team work and collaboration, and have some fun together.

Laserscape Albany will be back with more exciting, interactive laser-tag games, and Radrock will join us with their rock climbing wall and dual bungee trampolines.

For those living in the Newdegate, Lake King and Varley areas, a free bus service can be made available to and from the event, however numbers will be needed to run this service. You can select this option when booking via Humanitix.

Keep an eye on our Facebook page and the 'Events' page on our website for details and booking information.

Aimee Turnbull, Community Economic Development Officer
Email: cedo@lakegrace.wa.gov.au



Saturday 8 February saw a beautiful evening for a community movie night. Close to 70 people gathered on the Visitor Centre lawn to watch Australian movie, *Runt*, which was filmed in York.

We're changing things up a bit for the next one, with a 'Sundowner' movie night to be held at Walkers Hill Vineyard on Friday 21 February.

We're going back into the archives, with an 80s classic the pick of the evening. We had a great time going through the list, with plenty of nostalgic memories, but we struggled to find one under an M rating. Those were the days...

Shire of Lake Grace, the growing centre



OUTDOOR SUNDOWNER & MOVIE NIGHT

7.00pm
Friday 21 February

Walkers Hill Winery

Food and drinks available
to purchase

Complimentary Bus Service

**FREE
COMMUNITY
EVENT**



TOP GUN

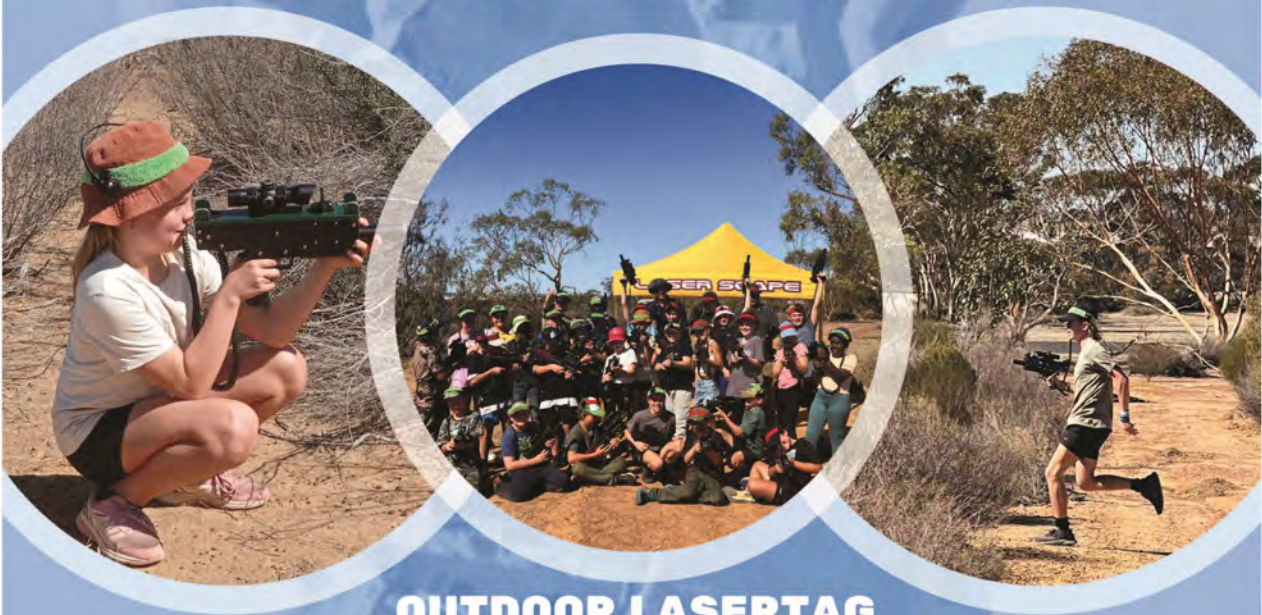


Connect with us

Shire of Lake Grace, the growing centre



LAKES YOUTH CHALLENGE DAY



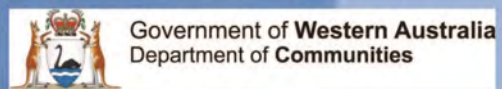
**OUTDOOR LASERTAG
BUNGEE TRAMPOLINES
MOBILE ROCK CLIMBING WALL**

Lake Grace Golf Course
10-3pm, Wednesday 16 April
Free event for ages 10-17 years

Bookings essential:



LASERASCAPE
THE ADVENTURE BEGINS NOW



<https://events.humanitix.com/lakes-youth-challenge-day>

COMMUNITY INFORMATION

Lake Grace Swimming Pool

Tuesday to Sunday: 12 noon - 6.00pm
MONDAY - CLOSED (except for early morning)
 Early Morning Swimming:
 Monday, Wednesday, Friday 5.30am - 7.00am

Library Services

Lake Grace Community Library

School Place
 T: 08 9865 1185
 E: lakegracelibrary@hotmail.com

Newdegate Public Library

Collier Street
 T: 08 9871 1791
 E: admin@newdegatecrc.com.au

Lake King Library

Newdegate/Ravensthorpe Road
 T: 08 9874 4147
 E: lklib@lakegrace.wa.gov.au

Town Planning & Building

Please contact the Shire of Lake Grace for all Town Planning and Building Surveying enquiries.
 Email: shire@lakegrace.wa.gov.au

Department of Transport

All licensing payments can be made in person at the Shire of Lake Grace Administration Building:

Monday to Friday 8:30am to 4:00pm

Please allow a minimum of 30 minutes prior to closing to enable completion of transactions.

We process the majority of transactions including: renewals, transfers, number plate orders, boat registration renewals and new licence applications.

Driving Assessor

Lake Grace holds one assessment day each month (subject to change). Bookings are essential for all Practical Driver's Licence Assessments as there is a wait list. Please contact the Shire office for bookings. For more information go to: www.transport.wa.gov.au

Environmental Health

Please contact the Shire of Lake Grace for all Environmental Health enquiries.
 Email: shire@lakegrace.wa.gov.au.

Waste Facilities

Lake Grace

Monday & Wednesday 9am - 2pm
 Saturday & Sunday 9am - 4pm

Newdegate

Wednesday 9am - 1pm
 Saturday 9am - 1pm

Lake King and Varley

Open every day

Recycling Services

Household waste is collected each Tuesday in Lake Grace, Newdegate, Lake King & Varley.

Recycling is a fortnightly service, alternating between Lake Grace and Newdegate:

Newdegate	Lake Grace
Tuesday 18 February 04 March	Tuesday 25 February 11 March

Shire of Lake Grace

Telephone: 08 9890 2500 (8.00am–5.00pm) | Email: shire@lakegrace.wa.gov.au

Administration Building, 1 Bishop Street, Lake Grace (8.30am–4.00pm Monday to Friday)

Postal Address: PO Box 50, Lake Grace, WA 6353

Website: www.lakegrace.wa.gov.au

Connect with us



Isolated Children's Parents' Association

Are you a parent, carer, organisation, or company in rural WA that represents a child at any stage of their educational journey?

If the answer is **YES**, then you should be a member of the Isolated Children's Parents' Association (ICPA).

Link to join <https://www.icpa.com.au/wa/membership> and to see what we are about.

ICPA advocates and lobbies for access to equitable

Lake Grace

CWA Cookbook



Is available.

\$23 a copy

This is a fundraiser for the Lake Grace branch.

Copies are available from the Lake Grace CRC and Lake Grace Visitor Centre.

education for all regional, rural, and remote children across the state, by raising awareness of the issues faced by geographically isolated children, families, schools, and communities.

ICPA WA has 8 branches within the state that work together with state government departments and organisations that have a direct impact on rural, regional, and remote children's educational journey. For 54 years ICPA has been working with rural families around the state on issues such as bus services, allowances, funding, school staffing, teacher training, school resources and services, accommodation, distance education, and early childhood. Whether the child/ren in your life attends daycare, playgroup, primary school, high school, boarding school, TAFE, or University, ICPA volunteers work to improve their experiences.

ICPA works hard to maintain close working relationships with all decision-makers in rural education, which has afforded them a seat at many tables local parents, schools, organisations, and communities can't get.

Some current issues our members are facing, and we are advocating for are:

- School Bus Service's



Farm Accountants WA

Making farm accounting *easier*.

Are you paying
TOO MUCH TAX?

Tax planning with a farm accounting specialist before June 30 is essential

- Farm visits
- Your choice of accounting software
- Trusted experienced farm advisers
- You'll know the cost up front

*Not happy with your current Accountants service, advice or fees?
Give us a call and we'll come and visit you.*

Phone: 08 6556 6040 Email: info@farmaccountantswa.com.au

Isolated Children’s Parents’ Association (*cont.*)

- Teacher attraction and retention
- Increase Boarding Away from Home Allowance (BAHA)
- Tutor Allowance for remote students

ICPA has recently celebrated success and supported families in:

- reinstalling two cancelled bus services for local members.
- gained access to accommodation for an ag school student that was previously denied
- seen an increase to the conveyancing allowance for school travel

By joining the ICPA Lakes District, you make our voice stronger when we are lobbying for the issues affecting your child, family, school, or community.

Please visit our website, find your local branch, and join today! <https://www.icpa.com.au/wa>

We also encourage you to keep up to date with what we are doing on socials with @icpalakesdistrict.



NOTICE OF AGM MEETING

WEDNESDAY 19TH
FEBRUARY
AFTER HOCKEY TRAINING IN
KUKERIN 7PM

AGENDA ITEMS / APOLOGIES
TO PRESIDENT FEE CHATFIELD
OR SECRETARY MEL EYNON



Ready. Net. Go!

NETBALL PRE SEASON

Thursday 6th Feb @ 5pm	Pool Session
Thursday 13th Feb @ 5PM	Pool Session
Thursday 20th Feb @ 6PM	Oval/Court Session
Thursday 27th Feb @ 6PM	Oval/Court Session
Thursday 6th March @ 6PM	Grading & Training Commences

We look forward to welcoming new members!

If you are wanting to play Senior Netball this season and aren't in our WhatsApp group, please let me know and I will add you :)

LAKE GRACE OP SHOP

The Op Shop is back to the usual hours of operation - Tuesdays (1.00 - 4.00pm) and Thursdays (9.30am - 1.00pm).

Never been in? Call by to see what we do and have a chat with our lovely volunteers.

New (to us) stock:

- Dinners sets (lots)
- Glasses (fancy and everyday)
- Coffee mugs
- Cookware
- Books – novel, non-fiction, cooking
- Clothes - women’s, men’s and kids
- Quilts, linen and bedding
- Pet bedding

If you would like to help out as a volunteer (just sometimes, or as a regular – half-days only), please contact Annie Slarke (0447 651 170) or Irene McGlinn (0439 887 440).

Puzzles and Stuff

Some words for 30th January edition

Answers for 30th January edition of Sudoku

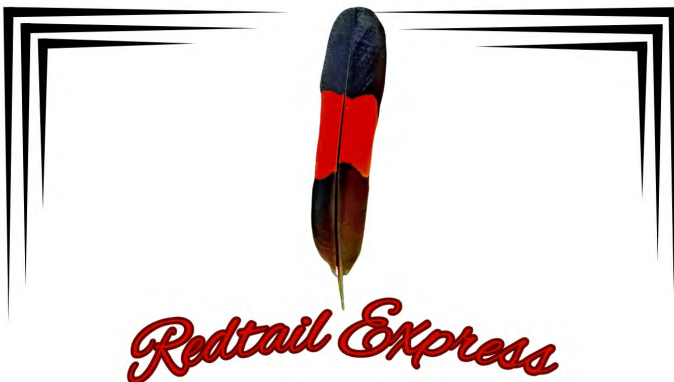
- Cretinous
- Countries
- Citreous
- Construe
- Neurotic
- Corniest
- Counties
- Cistern
- Contuse
- Cornute
- Counter
- Crinose
- Encrust
- Oestrin
- Recount
- Routine
- Scouter
- Section
- Stonier
- Tonsure
- Trounce
- Censor
- Cerous
- Conure
- Cornet
- Corset
- Cosier
- Cosine
- Course
- Cretin
- Cruise
- Erotic
- Escort
- Incest
- Incuse
- Insect
- Insert
- Nicest
- Nosier
- Notice
- Onsite
- Orient
- Recoin
- Sector
- Senior
- Source
- Stoner
- Unrest
- Crest
- Crone
- Curet
- Curse
- Cutie
- Inert

8	6	2	9	7	3	5	1	4
5	7	4	1	2	6	9	8	3
1	3	9	5	8	4	6	2	7
2	9	5	3	6	8	7	4	1
3	8	7	4	1	5	2	9	6
6	4	1	2	9	7	8	3	5
7	1	8	6	4	2	3	5	9
9	2	3	7	5	1	4	6	8
4	5	6	8	3	9	1	7	2

8	9	1	7	4	2	6	3	5
5	2	3	8	6	1	9	7	4
6	4	7	3	9	5	1	8	2
9	7	6	2	3	8	4	5	1
4	8	2	1	5	6	3	9	7
1	3	5	9	7	4	8	2	6
2	6	4	5	8	9	7	1	3
7	1	9	6	2	3	5	4	8
3	5	8	4	1	7	2	6	9

D	M	B
O	A	N
I	N	T

This week's Boggle (Every word must include the middle letter)



Redtail Express

LOCAL COURIER SERVICE

SOUTH EAST AREA OF THE GREAT SOUTHERN

- PARCELS AND PACKAGES
- ONLINE SHOPPING ORDERS
- PARTS AND AGRICULTURAL
- FURNITURE AND WHITE GOODS

MERETA POCOCK 0473 811 950

FYFE TRANSPORT

MC Driver Required

Two months work

Local work - based in

Lake Grace

Call David on 0428 651 129



\$80 Million Boost for Sport and Recreation Facilities

The Nationals WA have pledged to double investment in the Community Sporting and Recreation Facilities Fund (CSRFF) from \$20 million to \$40 million per year, delivering a much-needed lifeline to local sporting clubs and facilities across Western Australia.

Deputy Leader and Shadow Minister for Sport and Recreation, Peter Rundle MLA, said the \$80 million funding boost over the next four years would address years of neglect by the Cook Labor Government.

“For far too long, WA’s sporting clubs have been left to struggle with outdated and inadequate facilities because Labor’s investment hasn’t kept pace with rising costs,” Mr Rundle said.

“The current \$20 million annual CSRFF budget allocation, set by the Cook Government, is simply not enough to meet the growing demand for infrastructure upgrades. Remarkably, this is just a \$5 million increase since 1992, failing to account for decades of inflation in construction, labour and materials.”

Mr Rundle said The Nationals WA would ensure at least 50 per cent of CSRFF is directed to regional projects, where clubs often face the greatest challenges.

“Regional communities have been ignored by Labor for far too long, and their facilities are deteriorating as a result,” Mr Rundle said.

“Sporting clubs are the heart of our communities - they bring people together, improve health, create jobs, and even reduce crime rates. Yet these clubs are forced to rely on volunteers and fundraising just to maintain basic facilities.”

The Nationals WA will also streamline the cumbersome and time-consuming application process, which Mr Rundle said has been a barrier for many volunteer-run clubs.

“Our local sporting clubs are run by hardworking volunteers who don’t have the time or resources to spend months navigating Labor’s overly complex funding applications,” Mr Rundle said.

“We’ll make it easier, faster, and fairer for clubs to

access funding, so they can focus on what matters – supporting their communities.”

In addition to the \$80 million funding boost, The Nationals WA will develop a 10-year sporting plan for every region, strategically guiding investment in sports infrastructure.

“Catchment areas for regional sports are often vast, covering multiple local government areas. A long-term plan will ensure facilities are located, funded, and managed in a way that best supports regional needs,” Mr Rundle said.

“The plan will guide decisions on regional sporting infrastructure needs and locations, land use and operational responsibilities, community infrastructure plans and long-term investment priorities.

“Under The Nationals WA, we’ll rebuild and revitalise community and regional sports across the State, delivering facilities that empower clubs and bring communities together,” he said.

Accredited Forklift Workshop

1st and 2nd April

Please phone the Lake Grace Community Resource Centre on 9865 1470 if you have any queries or wish to register.

Must be 18 years of age to take part.

Cost TBC.



Want your negatives scanned and saved?

How about your slides? The Lake Grace CRC is able to scan your negatives, slides and photographs. They can then be saved to disc for future use or printed.

Enquiries to 9865 1470



2025



WINTER SPORTS

Senior & Junior Hockey, Netball, Football

SPONSORSHIP SIGN UP

➔ GOLD

\$1000

➔ SILVER

\$500

➔ BRONZE

\$250

➔ OTHER AMOUNT

\$ _____

➔ BOUNDARY SIGN FEE

\$ 100

➔ BOUNDARY SIGNS

Interested in a boundary sign?

We will be in touch

Do you require an invoice?

Sponsorship name

Contact details

Name

Mobile

Email

Payment to

Lake Grace Pingrup Football Club

BSB 036 167

Acc 277 161

Reference: [sponsor name]

☎ Chris Poot, 0427 190 827
 Sarah Allen, 0407 650 819
 Delys Giles, 0427 651 334

@ lgpfootball@outlook.com

✉ PO Box 73 Lake Grace 6353

2025

LAKE GRACE-PINGRUP
WINTER SPORTS

WINTER SPORTS

Senior & Junior Hockey, Netball, Football

SPONSORSHIP

→ GOLD

\$1000

- ✓ 2 x Winter Sports Wind-up tickets
- ✓ 2 x Sponsors' Dinner tickets
- ✓ 2 x Free entry to home games
- ✓ Home game naming rights (1 game)
- ✓ Logo display around the precinct
- ✓ No annual boundary signage fee

→ SILVER

\$500

- ✓ 2 x Winter Sports Wind-up tickets
- ✓ 2 x Sponsors' Dinner tickets
- ✓ Logo display around the precinct

→ BRONZE

\$250

- ✓ 2 x Sponsors' Dinner tickets
- ✓ 2 x Free entry on Sponsors Day
- ✓ Logo display around the precinct

→ IN-KIND

If you can contribute in another way, speak to one of our club presidents.

→ OTHER

If you have another figure in mind, we are always grateful.

→ BOUNDARY SIGNS

Annual advertising fee is \$100. You supply the sign.



Chris Poot, 0427 190 827
Sarah Allen, 0407 650 819
Delys Giles, 0427 651 334



lgpfootball@outlook.com

On The Job at the Perth Mint

State Library of WA

My name is John Fulton Fraser, and I was born in 1881 in Glasgow. I was ten years old when we came out.

My father built the first house in Fraser Street in Fremantle which was at the top of Alexandra Road. He was a carpenter in the shipyards back in Scotland.

He came to Australia from Glasgow, where I was born, because he had a brother in Victoria. But there was no work in Melbourne in the 1890s Depression so he moved to the West.

Once I was old enough, I worked for the plumbers Instone at Fremantle and also at Sandovers. I also worked in the Government Printing Office for about six months, but I didn't like that.

Then, on 17 August 1899, I joined the Mint. It had opened in May of that same year.

I was in the melting house, on the gold melting and filing. I used to get a slight dose of chlorine gas now and again which was used for refining the gold. When we received the gold from the goldfields, it would be melted, assessed and then lumped together and refined.

By the time we had finished pouring the pot of gold we had had enough chlorine gas. We lay outside for two hours and couldn't do any work. We were gasping for breath.

One young chap working there reckoned that the chlorine gas affected his lungs but he didn't get any compensation out of it. I have had as much gas as anybody, I think.

I can remember an incident where one of the generators burst and chlorine gas escaped. A man was delivering coke and he left his horses outside the door. He ducked away but one of the horses died with the gas. That was a long, long while ago.

I worked from 8am until 4:30pm, Monday to Friday. On Saturday, the hours were from 8 o'clock in the morning until midday. Later on, there was no Saturday work anymore.

Once you entered the Mint, you stayed there until you knocked off in the evening. You could get special passes in an emergency. We had to stay there for lunch. Every man had a cupboard for his clothes.

For security, there was always a guard on the gate and a man walking around. The working conditions were pretty hard sometimes and very strict. It was very hot work in the melting house because we had coke furnaces.

In the good days, we would use about 20,000 ounces of gold per day. When it was refined it would produce about 9,000 to 11,000 ounces of chloride silver.

All the floor sweepings were kept. We never threw anything away.

When you're doing the standard gold, you had to get everything right before you knock off. Say, they give you 10 or 20,000 ounces. Then you would have to produce a certain amount. There was always a percentage loss, you see, and if you were over that percentage, you had to go and find some more from the floor, the fires and scraping the pots.

The gold ingots from the 'fields was not pure. Some of it goes as low as 20% gold. Norseman gold was very silvery. Wiluna gold was the highest, very high, with only a little bit of copper in it. A lot of the Kalgoorlie gold had silver and lead in it. This had to be refined out before it could be turned into standard gold for sovereigns.

Standard gold is 22 carat and pure gold is 24 carat. Sovereign gold is always 22 carat. Pure gold is very soft. You could not wear a pure gold wedding ring as it wouldn't last long with washing and everything else. It would soon disappear. Most of the gold that came in was made into sovereigns. The banks used to deliver the deposits to the Mint and the Mint had to pay the bank.

But the Mint stopped making gold sovereigns in 1931.

I think I poured the last pot of standard gold in Western Australia for golden sovereigns. I poured standard gold afterwards but not to make sovereigns. Melbourne and Sydney are two hours ahead of us, so I reckon that I must have poured the last pot of standard in Australia.

The First World War and the Depression did not affect us much at the Mint except the wages were very low. When I retired on 31 December 1945, I received a pension of four pounds a week, and we could have lived on that even without the old age pension.

My family and I lived in Hay Street but it was called Broome Road in those days, and Churchill Avenue was Perth Road. We lived in the Coyle's building which is still there. There was a grocery shop below. It is the same side as the Subiaco pub.

There were hardly any houses. That was long before the tramline started. There was a horse bus that ran from Subiaco Hotel to Perth and back. There were two horses to draw the bus.

I remember there was gas lighting in the streets in Perth. A man used to go with a big pole and light the gas every night. I can't remember if there were streetlights in Subiaco. I don't think so.

I have lived in Subiaco since 1898, and I have been in this house for 63 years now.

[Interview with John Fulton Fraser] / [interviewed by Chris Jeffery]

Oral History | 1976

Available online (Call number: OH122)

[City of Perth](#) [The Perth Mint](#) [The West Australian](#) [ABC Perth](#) [ABC Goldfields-Esperance](#) [WAtoday.com.au](#) [PerthNow](#) [Museum of Perth](#)

Lake Grace Cricket Club Notes

Shaye Bowron

On a hot and humid Saturday afternoon, LGCC travelled to Narrogin to take on Towns CC. After winning the toss, stand in captain Dylan Brooks decided to bat first, which would prove a great move. Now as a batting unit, we haven't made a lot of runs this season, but it finally clicked for the LG batsmen, with some very handy contributions from Craig Shaw, Kalan Joyce and Shaye Bowron. For the first time this season we managed to bat out our 45 over innings for a total of 8/194. Late tail order resistance, thrown in with some lusty hitting enabled us to post this competitive score.

Craig Shaw 60 not out
Kalan Joyce 31
Shaye Bowron 25

Dylan Brooks 1/36
Kalan Joyce 1/30
Brayden Reynolds 1/47.

The mood was high, with a lot of belief in our bowling side, to defend the total. 2 early wickets to Brooks and Reynolds had the boys up and about, but it wasn't to be. Fielding errors, dropped catches combined with a little bit of wayward bowling was our eventual demise. Towns chased down the total with 5 overs to spare 3/195 and plenty of batsmen left in the shed. The LG boys showed plenty of fight, but to no avail. This week we move on to our next game away at Wandering.



Peter Rundle MLA
Member for Roe

DEPUTY LEADER OF THE NATIONALS WA

Narrogin Office Ph: 9881 1225
83 Federal Street
Narrogin WA 6312

Esperance Office Ph: 9071 6555
107 Dempster Street
Esperance WA 6450

www.peterrundle.com.au
PeterRundleRoe
E: peter.rundle@mp.wa.gov.au

Lake Grace Harvest Festival Committee Meeting

6pm

Wednesday 12 March 2025

Lake Grace Hotel

All community members are invited to get involved and join the Harvest Festival Committee to help plan and shape this year's Harvest Festival.

If you cannot attend this meeting but would still like to be involved, please email central@lakegracecrc.net and we will get in contact with you.

Online Tax Schemes on the Rise

The ATO is warning the community to be alert for potentially dodgy tax schemes which are spreading online, including through social media.

Acting Deputy Commissioner Sarah Taylor is urging individuals to be wary of online promotion of tax schemes promising to significantly reduce or avoid tax altogether.

'Sometimes tax schemes can be peddled as investment schemes. We don't want to see honest people lured into unlawful tax schemes with false promises of high returns and tax savings – if an offer seems too good to be true, it probably is,' Ms Taylor said.

'Those who invest in unlawful tax schemes stand to lose their hard-earned cash, and risk paying tax with interest and heavy penalties.'

'Promoters of these schemes are often opportunistic and target vulnerable people. Protect yourself and your money by getting advice from a registered tax practitioner before committing to anything,' Ms Taylor said.

The ATO's website lists a number of tax schemes to look out for. In one particular recent scheme, individuals are being advised to invest in a start-up company that allegedly qualifies as an early-stage innovation company (ESIC). By investing in an ESIC, they're told they can then claim the early-stage investor tax offset on shares

purchased through the financing arrangement.

The ATO is concerned individuals may be entering into these arrangements under the belief they are entitled to the tax benefits claimed using the financing arrangements. We are also concerned that the companies may not qualify as ESICs.

Another type of tax scheme being promoted in the community promises individuals they can avoid paying tax by setting up a purported non-profit foundation and diverting their income to it. These schemes are not effective and the individuals will still have to pay the tax on the income.

If you are approached with tax arrangements that sound like either of these examples, or sound too good to be true, seek advice from a registered tax practitioner and report it to the ATO.

The ATO takes a strong stance against all types of unlawful tax schemes and their promotion. 'Promoting and participating in unlawful tax schemes are not victimless crimes. Those who choose to engage in these behaviours are attempting to obtain an unfair advantage over those who do the right thing,' Ms Taylor said.

We take targeted action against unlawful tax schemes that promote tax avoidance behaviours and against those who promote these schemes. We are committed to helping protect the community against misinformation about schemes spread on various channels.'

If you are offered an unlawful tax scheme, you should reject it and report it to the ATO confidentially by:

- completing the tip-off form on the ATO website
- phoning the tip-off hotline on 1800 060 062

If you suspect that you've inadvertently become involved in an unlawful tax scheme, you should also contact the ATO immediately. If you proactively approach the ATO, you may be eligible for a reduction in any penalties imposed.

To check if a tax practitioner is registered, use the Tax Practitioners Board's public register.

For Sale

Pajero Station Wagon
4x4 diesel auto GLS
Excellent condition.

2011 model.

Call Lindsay on 0429 651 170 for
more details.



2025 Expressions of interest

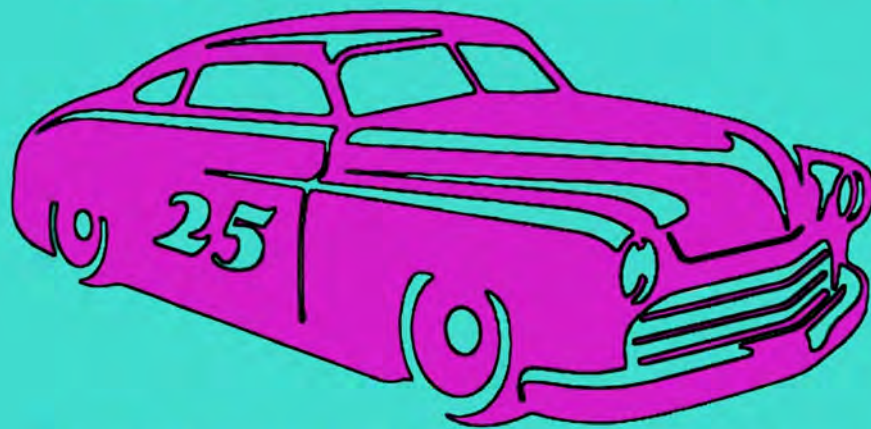
The Lake Grace Pingrup Hockey Club invite expressions of interest for the following positions:

- A Grade Coach
- Junior Coach
- Minkey Coach

Please email secretary at lgphc.secretary@gmail.com for more information or enquires.

LAKE GRACE CARS AND COFFEE

LAKES *Without* BRAKES



ALL VEHICLES OLD, NEW AND
SOMEWHERE IN BETWEEN

23 MARCH 2025
9AM-12PM

LAKE GRACE
SPORTS PAVILLION

Registration open 8am
at the gate

Prizes to be won!

Sponsored by local
businesses

All welcome to come
out and enjoy the
morning of cars, coffee
vans, local cafes and
the new Lake Grace All
Abilities Playground.



Lake Grace
Development
Association

Event Link

1 Bishop Street, LAKE GRACE WA



Classifieds

Rural West Financial Counselling

A free confidential, mobile, independent financial counselling service to regional small businesses and all primary production enterprises in WA. For more information contact Donna Spurgeon by email Donna.Spurgeon@ruralwest.com.au or phone 0408 107 326. Alternatively you can contact the information line on 1800 612 004.

Cancer Support Coordinator

Cancer Support Coordinator for the Wheatbelt can provide you with emotional support and assistance navigating through the range of services available over the phone or through video consult: call Monica Graham Tues-Thurs on 0428 747 845.

Dr Linda Haines

Ring 9865 1208 for dates and times to make an appointment

Community Bus Bookings

Are to be done through the Lake Grace CRC. Ring 9865 1470 or email central@lakegracecrc.net
The community bus is owned and managed by the community, is available to any individual, group or organization to hire and costs \$1.50 per kilometre to use. All proceeds go toward the management and running of the bus and toward bus upgrades.

Southern Agcare

This is a free and confidential Family and Individual Counselling Service. Please contact Southern AgCare main office for an appointment.
Phone (08) 9827 1552 or admin@southernagcare.org.au referral forms can also be found on our webpage www.southernagcare.org.au

Men's Shed Battery Drive

The Lake Grace Community Men's Shed is continuing with their battery drive.
This is an ongoing revenue raising project which will contribute to the running of the Shed.
Batteries can be left at the Men's Shed or you can contact Ollie Farrelly on 0498 479 968 if you require them to be picked up.
Thank you for your ongoing support.

CWA Bookings

CWA rooms are available for hire. There is a COVID Safety Plan in place that hirers will need to adhere to. Anyone using the rooms must fill in the log book. If you wish to book the CWA Hall then please contact the Lake Grace CRC on 9865 1470.

First Aid Kits

Are now available for purchase at McKenzie Home Hardware Lake Grace.

Pingrup Centenary Book

Pingrup CRC still have some of their wonderful Centenary books left.

They want to make sure that everyone that ordered one has got it and if there were anyone who would like one (or another one) to email us and we can organise getting it to you.

We'd hate for anyone to miss out.

Books are \$80

Postage for 1 book is \$18.95

Email: pingrup100@gmail.com
Phone: 9820 1101

Dumbleyung ADF Book

This hardcover book features 450 personal short stories collected and written about men and women from Dumbleyung and Districts who served in the Armes Services.

Books are \$80

Available at the Lake Grace CRC.

Expressions of Interest

Are you and RN or Enrolled Nurse looking for some casual extra income?

The CRC and The Staying in Place program are looking for you.

If this sounds like something that you would be interested in please contact Tracey at the CRC on 98651470

Lake Grace Shire Councilors

Councillor	Telephone
Cr Len Armstrong – Shire President	0429 843 785
Cr Steve Hunt - Vice Shire President	0427 651 585
Cr Deb Clarke	0428 654 041
Cr Ben Hyde	0428 752 042
Cr Roz Lloyd	0428 711 534
Cr Anton Kuchling	0427 206 030
Cr Ross Chappell	0428 654 058

Community Clubs and Associations

Club / Association	Secretary / Contact	Contact Number	Contact Email
Artist Group	Kerrie Argent	0447 791 399	kerriearg@hotmail.com
CWA	Suzanne Reeves	0427 651 310	Lakegracecwa@gmail.com
Development Assoc	Paula Carruthers	0499 616 070	ghpmcarr@bigpond.com
Early Learning Centre (Daycare)	Vicki Reynolds	08 9865 2568	LakeGraceelc@gmail.com
Lions	Chris Harvey	0429 651 275	lglionsec@gmail.com
Men's Shed	Wally Perry	0448 795 070	allwood93@yahoo.com.au
Playgroup	Claire Crosswell	0409 484 428	LakeGraceplaygroup@mail.com
Sportsman's Club	Mathew Hobbins	08 9865 1239	lgsportsmansclub@bigpond.com
Toy Library	Bobby Manson	0416 699 428	lgtoylibrary@outlook.com

Summer Sports

Lake Grace Tennis Club	Jemma Bairstow	0439 851 505	lakegracetennisclub@gmail.com
Lake Grace Bowls Club	Dean Sounness	0415 452 400	
Lake Grace Cricket Club	Shaye Bowron	0428 652 556	

Crisis Care Numbers

Doctor's Surgery -9865 1208	Hospital - 9890 2222	Ambulance/Fire/Police - 000	Electricity Faults - 13 13 51
Rural Link - 1800 552 002	Main Roads - 138 138	Directory Assistance - 1223	Water Faults - 13 13 75
55 Central Men's Refuge 9272 1333 enquiries@55central.asn.au	Family Helpline 1800 643 000 / 9223 1100	Ngala 9368 9368 ngala@ngala.com.au	Lifeline Australia - 13 11 14 www.lifeline.org.au
Wheatbelt Mental Health Service Northam - (08) 9621 0999 Narrogin - (08) 9881 0700	Kids Helpline 1800 55 1800 www.kidshelp.com.au	Crisis Care WA - 9223 1111 / 1800 199 008 www.community.wa.gov.au	Citizens Advice Bureau Perth- 9221 5711 www.cab.wa.com.au
Beyond Blue - 1300 22 4636 www.beyondblue.org.au	Seniors Information Services 1800 671 233 info@seniorscard.wa.gov.au	Youth Legal Service 9202 1688 / 1800 199 006 www.youthlegalservice.inc.com.au	Poisons Information 13 11 26
Suicide Call Back Line - 1300 659 467 www.suicidecallbackservice.org.au	Parent Drug Information Service - 1800 653 203	Family Court of WA 9224 8222 / 1800 199 228 www.familycourt.wa.gov.au	Council on the Ageing WA 9471 0104 admin@cotawa.org.au
Alcohol and Drug Information Service 1800 198 024 https://www.mhc.wa.gov.au/	Mental Health Emergency Response Line - 1300 555 788	Holyoake Northam - (08) 9621 1055 Merredin - (08) 9041 3807 Narrogin - (08) 9881 1999 Freecall - 1800 447 172	Relationships Australia Fair Programme 9336 2144 https://relationships.wa.org.au 1300 364 277

Justices of the Peace		Church Times	
		Catholic Church	Anglican Church
Colin Connolly	0427 858 066	16th February - Communion Service @ 8am	February 16th Morning Prayer 10am
Ron Dewson	0428 651 213	23rd February - Communion Service @ 8am	March 2nd Communion 10am
Amanda Milton	0429 654 011		Enquiries: St Johns Albany 9841 5015 The Revd. Vicki Anne Webb 0429 323 025
Geoff Sabourne	0429 651 171	For inquiries please phone 9721 0500 - Bunbury Diocese	

COMMUNITY CALENDAR

February 2025

Fri 14	Fish and Chips @ The Sportsman's Club	Wed 26	School Swimming Lessons
Sat 15	Rubbish tip Open (9am-4pm) Cricket- Wandering v LG	Thurs 27	Working at Heights Workshop Men's Shed (morning) SOYF @ Pavilion—10am Lakes Link News Published School Swimming Lessons LG-Pingrup Netball Pre-Season Training
Sun 16	Rubbish tip Open (9am-4pm)		
Mon 17	Pool Closed School Swimming Lessons Town Teams Meeting 6pm @ Pub		
Tue 18	Rubbish Collection Men's Shed (Morning) Playgroup 9:30-11:30 School Swimming Lessons	Coming Events 17-28th February- School Swimming Lessons 28th February- Working in Confined Spaces Workshop 1st March- Cricket Lake Grace v Towns 5th March- Year4-6 Cricket Clinic 6th March- Lake Grace-Pingrup Netball Training Begins 8th March- Cricket- Semi-Finals 11th March- Seniors Art @ Village Hall 10am-12 12th March - Centrelink Mobile Service Centre in LG 12th March - Harvest Festival Committee Meeting 13-14th March- Auschem Workshop 15th March- Cricket Preliminary Finals 20th March- Art Group Meeting @9:30am 22nd March- Cricket Grand Final 23rd March- Lakes With Out Brakes @ Pavillion 8am 26th March- Council Meeting 1st-2nd April- Forklift Course 11th April - Youth Blue Light Disco 16th April - Lakes Youth Challenge Day 23rd April- Council Meeting	
Wed 19	School Swimming Lessons		
Thurs 20	"INDY" Information Session @CRC School Swimming Lessons LG-Pingrup Netball Pre-Season Training SOYF @ Pavilion—10am Art Group Meeting@ 9:30am		
Fri 21	Fish and Chips @ Sportsman's Club School Swimming Lessons Outdoor Sundowner and Movie Night		
Sat 22	Rubbish tip Open (9am-4pm) Cricket- LG v Williams		
Sun 23	Rubbish tip Open (9am-4pm)		
Mon 24	Rubbish tip Open (9am-2pm) Pool Closed Lakes Link News Deadline School Swimming Lessons LGDHS P&C Meeting @ 6:30pm		
Tue 25	Rubbish Collection Recycling Collection SOYF @ Pavilion—10am Men's Shed (morning) Seniors Art @ Village Hall 10am-12 Chair Aerobics @ Village Hall School Swimming Lessons LGDHS School Board Meeting @ 7pm		

		5	4	9			1	2
	7	6	8					
2			1			5		8
	2	8	6					7
	6		5	3			4	
9				8	3	2		
4		3			5			1
				4	9	3		
5	9			7	1	6		

Sudoku

- The Sudoku grid of rows and columns is divided into individual 3x3 boxes.
- The aim of the game is to fill each row, column and 3x3 box with the numbers 1 to 9.
- You can't repeat numbers in a row, column or 3x3 box and you can't change the numbers already in squares.

		7		9		6		
	3				7			
8		1			6		7	
			8			5		4
	6						9	
1		5			3			
	4		1			3		2
			2				8	
		8		7		9		