

# LAKE GRACE TELECENTRE

Produced at the  
LAKE GRACE TELECENTRE  
Cnr Bishop & Absolon Sts  
PO Box 177 Lake Grace WA 6353  
Ph (08) 9865 1470 Fax (08) 9865 1471  
Email: lakelink@treko.net.au  
ABN: 19 498 730 152

6th May, 2004

\$1.10 inc GST

Vol 10 Issue 7

## It's a First!



*Rear L to R: Matthew Trevenen, Ashley Mahoney, Alex Reeves, Braden Frost (goalie), Paul Curtin and Lindsay McGlinn (coach).*

*Front L to R: Michael Hamilton, Joe Duckworth, Aaron Smith, Benn Tomkins, Harley Pittard, Nat Curtin and Beau Bowron*

The downside of a small rural town can be the lack of sporting opportunities available to local children, particularly teenagers. Local Mum's Genni Curtin and Nadene Owen haven't let that get in their way as they swiftly organised an U16's boy's hockey team.

The idea of a boy's team had been niggling at Mrs Curtin for some time, as different parents commented that they had sons that either weren't interested in football or had recently entered high school and therefore weren't able

to play 'D' grade football.

After approaching the Roe Districts, Genni had the Lake Grace U 16's entered into the fixtures, then set about finding a team. Holding their breath and utilising their extensive knowledge of local families, Nadene and Genni canvassed until not only did they have the team, but also the coach.

Lake Grace Hockey Club President, Belinda Bowron, went on to organise sponsorship and

*Continued page 31*

# CONTENTS

Page 3	Editor's Page	Page 19	Forum to Farm Safety
Page 4	Courtney Gray	Page 20	Art Group
Page 5	About Town	Page 21	Avon Catchment
Page 6	50th Wedding Anniversary	Page 23	Nightwatch
Page 8	Weather	Page 24	Grantsmart
Page 9	Science & Stuff	Page 25	Humour
Page 10	Culture Seminar	Page 26	St John Ambulance, Library
Page 11	Health Page	Page 28	YAC
Page 12	CWA	Page 29,30,31	Hockey Club
Page 13,27	Shire Page	Page 32	Gymnastics
Page 15	Avon Catchment Nominations	Page 33	Riding School
Page 17	ABCDE	Page 34	Golf; Junior Golf
Page 18	Farmsafe—Seedingr	Page 35	OFA Winter Sports

## Telecentre Opening Hours

Monday - Friday 9:00 am - 12:30 pm ; 1:30 pm - 5:00 pm

## Library Opening Hours

Monday, Tuesday, Thursday, Friday 9 - 5 pm



### Advertising Charges

All prices inclusive of GST

1/8 page	\$ 8.80
1/4 page	\$13.20
1/2 page	\$22.00
Full Page	\$41.25
Classifieds	85c /line

We would appreciate your advertisements and articles on disk or emailed if possible.

Please email all material to:  
**lakelink@treko.net.au.**

### Deadlines & Editions

All articles, news & advertisements should be submitted to the Telecentre by close of business on Monday of paper week.

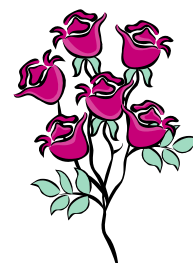
**Next Deadline: Monday 17th May**

**Next Edition: Thursday 20th May**

### A very BIG thank you

*To the dedicated team who have produced and compiled this edition of the Lakes Link News.*

Dot Kennedy  
Danielle Robertson  
Lesley O'Neill



*Thank you also to our many contributors of articles*

### DISCLAIMER

- 1 No liability shall be incurred by the Lakes Link News by reason of any amendments to, or error or inaccuracy in, or the partial or total omission of an advertisement or by reason of delay or default or from any other cause whatsoever. If in the opinion of Lakes Link News the error clearly reduces the value of the advertisement and the advertiser notifies it to Lakes Link News within seven days of the publication date, then one correct insertion will be made without charge.
- 2 While the Lakes Link News aims to publish all material submitted, Lakes Link News reserves the right to refuse to publish or re-publish any contribution or advertisement without giving any reason.
- 3 No articles, letters or advertisements will be accepted which may appear to be defamatory or accusatory, or to favour one side in a legal dispute.
- 4 Lakes Link News reserves the right to shorten or otherwise amend any contribution other than advertisements.

# EDITORIAL

- 1 The AGM for the Recreation Council has now been reset to **Thursday 13th May at 7:00pm**, as we were unable to get nominations for President at our last get together. Please remember the same rules still apply, all affiliated groups **MUST** send two delegates otherwise they will be fined (delegates can't represent more than one club/group). The AGM will be held at the pavilion.
- 1 On the subject of AGM's the Library, Resource and Telecentre has their AGM on **Thursday 20th May at 11:00am**. We are still looking for someone to be the community representative so that we can have a fully functional committee. Community representation is important as it provides the committee with a non-affiliated opinion of what the community needs are, rather than a corporate body telling the community what they think they need. So if you don't mind giving up an hour of your time every 3 months then ring Linda Carruthers at the Library and put your name forward.
- 1 Once again the Narrogin BEC have training vouchers available, these must be applied for **BEFORE** training is undertaken, they are not retrospective. The first \$100 is fully funded, the second \$100 must be matched \$ for \$ by the participant. Participant pays for training and is then reimbursed. Strictly one voucher per ABN. Forms are available from the Telecentre or you can ring Lisa Shields on 9881 4908.
- 1 Now if you wish something could be done about the speed of the internet in our area then log on to the Telstra website ([www.telstra.com.au](http://www.telstra.com.au)) and register your interest for ADSL broadband. Once on the site you will see a Quick Link to Telstra Country Wide, which will then lead you to Bigpond ADSL Availability, which in due course will show you that only three people are interested in ADSL. So if you would like to see some changes happening, express your interest as nothing will change if we don't make ourselves heard.

*Suzanne Reeves*



## Colour Photocopying

Smaller??!!



Larger??!!

\$5.80 per A4 page on glossy  
photocopier paper  
*at the Lake Grace Telecentre*

## Thanks to Last Fortnight's Collators



Dot Kennedy  
Gaillene Kennedy  
Michelle Lay  
Kim Hawtin  
Amber McPherson

A very well attended (60 people) Anzac Day Service was held at the RSL Memorial in Lake Grace.

Mr Len Elliott welcomed all and asked Captain Derek McArtney (Anglican Church) to continue the service, he gave a very good address.

Hamish McArtney played the Last Post and Reveille on the trumpet. Well done Hamish and thank you.

Seven organisations and families laid wreaths in memory of their people.

Ladies served a nice morning tea.



## Congratulations Courtney Gray

Courtney Gray has just returned from Darwin where she competed in the Australian Under 18 Women's Hockey. WA came in at third place in hot humid conditions. Courtney would like to thank the Lake Grace Hockey Club for their sponsorship in helping get her to Darwin.



*Courtney outside Perth Hockey Stadium at training.*



*Courtney in an ice vest during one of the games.*



## Mobile Child Care Service

Gnowangerup Family Support Association is a Not for Profit Organisation providing Licensed Child Care to remote and rural families throughout the Great Southern region.

Due to increasing support from the families of Lake Grace and surrounding areas, we are now able to offer 3 days of Child Care each week (during school term).

So if you have Children between the ages of 0-6 years, come along to the Sporting Pavilion and see for yourself just how much fun we have!

Monday-9am-3pm

Tuesday-9am-3pm

Wednesday-9am-3pm

For any further information please contact Kim Allen on 0427 271 457



# ABOUT TOWN

- Congratulations to Monique Berendse and Brett Wheaton who announced their engagement over the weekend, we wish them all the best for their future together.
- Well done to Meg Marshall, Lois Dickins, Julie-Ann Bushby, Belinda O'Neill, Anne Mitchell, Gail Murdoch, Kay Anderson and Mr Doney for passing their Ambulance Officer course at Newdegate.
- Felicitations to John and Nellie Lay for achieving their milestone (see p 6). I'm sure it's a tie for who deserves the medal.
- Congratulations to Michelle Slarke who has been selected to exhibit her artwork 'Skirting' at the National Regional Arts Conference in Horsham Victoria.
- Farewell to Meighan and Jim Cunnington who are moving to Perth in readiness for their new arrival.

## Premier Books

Compact World Atlas—\$12.00; Everest—\$30.00; Family Doctor—\$12.00; Flip & Find Opposites—\$7.00; Magic Windows—\$12.00; Memo Set—\$4.00; Photo Album—\$10.00; Weather Jacket XL—\$6.00; Maisey's First Flap—\$8.00; For Mother—\$6.00; Drawer Liners—\$6.00

# HAPPY BIRTHDAY



May 7th	Paul Curtin Maureen Comley	May 12th	Aaron Dunham Stuart Blackwood
May 8th	Jamie Slarke Melissa Taplin Chella Beckett Peter Hudson	May 14th	Ron Willock
		May 15th	Dot Jenks (80)
May 9th	Rebecca Reeves Narelle Lucas Joe O'Neill Deb Beggs	May 16th	Leesa Pettit
		May 18th	Nathanael Curtin
		May 19th	Fraser Hunt
May 11th	Mark Burbidge Laurie Dickens Nanette Wallace	May 20th	Gert O'Neill Laurence Bourne



# HAPPY ANNIVERSARY

May 12th - Lee-Anne & Chris Trevenen

May 12th - Mary & Russell Eggers

Fax, email or bring your *About Town* news into the Telecentre. If you would like to share your birthday or anniversary celebrations with us then please fill in the Celebrations book. Alternatively just drop your details into the box at the Post Office.

# 50th Anniversary



John and Nellie  
May 1st 1954

A surprise party was arranged for John and Nellie Lay who celebrated their 50th wedding anniversary on May 1st. It was held in the Senior Citizen's hall and **what subterfuge to get them there!**

A great job was done by their immediate family with Bambi and Ron doing the organizing, ably helped in the preparations by Bevan (Bird) and Vynca, Maurice and Jodi. Maurice brought quantities of his own wine, both red and white, which was excellent and was well sampled.

Nellie and John would like to thank their families for all the hard work they put into the day, and also Kelly, Tammy, Dillon and Bradley who helped with the work and did most of the waiting at table. (incidentally, the food was delicious!).

They would also like to thank everyone who came and for the wonderful presents they received.

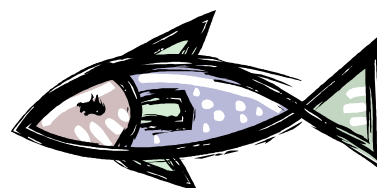
People came from Wongan Hills, Esperance, Busselton, Mandurah, Perth, Bunbury and Albany, not forgetting those from Newdegate and Lake Grace.

The couple said they had a wonderful day (which it was ) once the initial shock wore off. It was certainly great to catch up with relatives and friends, especially those they don't see often.

All the guests thoroughly enjoyed it too and did lots of catching up of their own.

## SAB'S FISH AND CHIPS

Fish and chips	\$13.00	1/2 serve	\$7.00
Seafood basket	\$14.00		
Basket of chips	\$3.00		
Salad and chips	\$5.00		
3 chicken nuggets and chips	\$4.50		
6 chicken nuggets and chips	\$6.00		



**Phone orders and takeaways most welcome, just bring your plate**

# SAND'N SALT



Shop 5, Lakeway Shopping Centre,  
22/23 Stubbs Street, LAKE GRACE

FASHION FOR THE SALT OF THE EARTH

## LADIES

Warm winter tracksuits in from **GIVONI**  
**Slazenger** Sportswear due in soon.  
New shipments of younger styles due today.

## MEN

Track pants from **LIGHTNING BOLT** and **Yarra Trail**.  
Winter shirts and cord jeans have arrived.

**Try us first for your winter clothes!**



**WORK** wanted  
**WORK** available

I specialize in  
Rural • Regional • Remote  
placements

**WORKERS** wanted  
**WORKERS**

connecting workers with employers

Both seasonal and permanent positions for  
couples or singles - Machinery Operators,  
Farm, Station, Dairy, Domestic, Piggery  
Any and all jobs listed and actively recruited for.

**Tel: (08) 9481 0199 • Mob: 0417 467 890 • Fax: (08) 9481 0299**

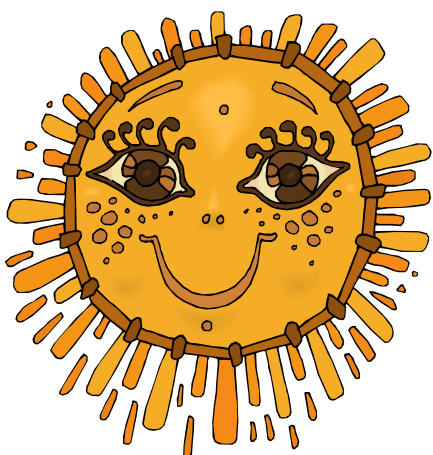
**charlie@seekwork.com.au • www.seekwork.com.au**

## Lake Grace Weather

- Terry Gladish

### Temperature Extremes for May

Highest Maximum	32.7	03/05/1972
Lowest Maximum	10.8	28/05/1993
Highest Minimum	17.3	26/05/1998
Lowest Minimum	-0.3	27/05/1964



Date	Min	Max	Rain
22/4	5.7	18.8	2.4
23/4	9.0	24.3	
24/4	10.3	27.0	
25/4	11.1	25.0	
26/4	10.0	26.2	
27/4	11.1	25.6	
28/4	8.8	28.0	
29/4	12.3	23.7	
30/4	12.6	17.5	
1/5	10.2	17.8	
2/5	8.0	19.0	
3/5	8.5	21.7	
4/5	8.1	21.3	
5/5	9.6		

# KULIN CARPET CARE

Offering a professional carpet cleaning service  
that *cleans* and *refreshes*  
your carpets and upholstery.

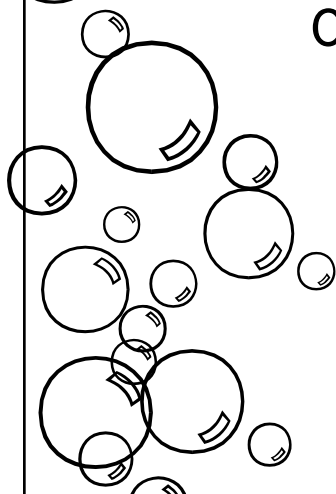
All prices include deodorising and disinfectant.

**NO TRAVEL CHARGES**

(when we can organise a day's work).

**WS & C Griffin**

Telephone: 9880 1081



**Call Will, Carol or Kris on 9880 1081 anytime for a free quote**



# SCIENCE AND STUFF

Infections explain why our blood groups differ:- why people have different blood groups is something of a mystery. A new analysis suggests that different groups evolved to give populations a balanced defence against viruses and bacteria. People have either blood group a, b, ab, or o, with each type occurring at different frequencies in populations around the world.

A mathematical model has shown that this diversity is caused by selection pressures imposed on human populations by viral and bacterial infections. The model reveals that if viral infections dominate a population, blood type o will be most common, whereas if bacterial infections are more common, then a and b blood types will be more frequent. These results closely resemble the balance of blood types seen in today's populations. Viral infections increase the frequency of blood type o due to the antibodies in our blood. Type a people have anti-b antibodies, type b's have anti-a antibodies, type o's have both and type ab's have none. This affects the transmission of viruses.

It was found recently that measles viruses pick up a chemical signature specific to each blood type as they burst out of infected cells. They do this by copying patterns of sugar molecules attached to cell surface proteins. This makes the viruses susceptible to attack by antibodies in people with a different blood type.

It was found that viruses emerging from type a and b cells are neutralized by type o blood, because it contains antibodies to fight against molecules carrying signatures of type a and b. However, type a or b blood could not neutralize viruses emerging from type o cells.

When plugged in to their model, it was found that type o people are good at transmitting viruses to people with a or b blood types. Yet o type people are better protected from viruses that had infected type a, b, or ab individuals. This means that if viruses were the sole scourge, only type o people would survive in the long run. This is not the case, as we have to account for some advantage that a's, b's, have over the o's. It turns out that bacterial infections restore the balance. Bacteria have to adhere to the sugars on some epithelial cells and these sugars are specific to each blood group.

The model shows that bacteria will evolve to attach to sugars specific to the majority blood type in a population and attack these hosts. So bacteria tend

to infect people with type o in populations where that group is most common.

Yet the model does not answer a key question. ABO blood groups evolved at least 13 million years ago in common ancestors of great apes and humans and the sugar molecules associated with the blood types have not changed much since.

If blood groups are a defence against infections, it's a mystery why ABO molecules are so rigidly conserved when bacteria and viruses are constantly mutating. (from Blood vol. 199, p 2477), and New Scientist 17th April.

Vive la difference:- they say variety is the spice of life and now we have a global treaty designed to ensure it remains. The International Treaty on Plant Genetic Resources for Food and Agriculture will become law on 29th June, following ratification by 12 countries and the European Community.

The treaty is designed to prevent food shortages caused by the failure of major crop varieties. The world relies on just a few varieties of wheat, rice, maize and potato for 60 percent of its calories. However so few varieties are grown with such limited genetic variability, that our crops are vulnerable to being wiped out by disease and climate change, warns the head of the UN Commission behind the treaty.

The treaty has three main objectives:

- To encourage the conservation of genetic diversity
- To promote the cultivation of a wider variety of crops,
- And to share the benefits that come from exploiting these plants.

Companies that profit from exploiting genetic diversity, for example will pay a proportion of their profits back into a central fund that will support related projects in developing countries. Animals will soon need protecting too.

The UN Food and Agriculture Organization warns we are seeing a potentially catastrophic loss of domestic animal breeds around the world with 1350 of the 6300 breeds registered by the FAO at risk of extinction or already extinct. The reasons include war, disease and urbanization. The biggest threat is the modern farmer's preference for breeds best suited to intensive agriculture. *New Scientist 10th April 2004.*  
Maurice Gilson

# Wheatbelt Cultural Forum

Kerrie Argent, Tania Spencer and I returned, inspired and galvanized, from last week's Wheatbelt Cultural Forum at Kellerberrin. Highlights were presentations from Wheatbelt communities which received funding through Country Arts WA's 'Uncovered' program: wearable art and performances at Mukinbudin, Wundowie's entry statements, and mural/mosaics at Goomalling. Young people in Dowerin conducted a community audit – 'empty buildings' are just 'unused spaces' – and designed a sculpture to promote their town. The Shire of Kondinin also created sculptures, linking their three towns firstly through workshops and then visually through the scrap iron artworks placed in each town.

Arts workers talked about the importance as culture as a business, the problems they encountered and how their projects inspired them to further develop culture in their town.

In the afternoon we attended separate workshops – documentation of artworks, communicating through different media, working with local government and promoting Youth Arts.

Friday night at the Doodlakine Hotel was a chance to socialize with other artists and arts workers, dine out and view films from the Film and Television Institute Making Movies Roadshow program. This impressive program sends filmmakers to WA communities to spend five days teaching children the basics of making a film. At the end of that time, the community views a short film written, starring, recorded and shot by the children.

Saturday began with a cultural tour by Nyoongar elders and CY O'Connor TAFE students. We then finished the Forum with a

brainstorming session to discuss the future of cultural development in the Wheatbelt. Common experiences of those present were professional isolation, administering a community project rather than making art, and the roles volunteers take on because 'there was nobody else to do it' (sound familiar). We discussed how to incorporate Art into the community, to engender respect for Art and artists and to develop Art education and awareness.

A working party of artists and arts workers was formed to consult with Country Arts WA, the Wheatbelt Development Commission and ArtsWA to consider the following:

- Promoting a regional identity for Wheatbelt Arts and Culture
- Networking to reduce professional isolation
- Utilizing the skills of Wheatbelt cultural workers
- Maintaining artistic standards
- Infrastructure and support for Arts and Culture in the Wheatbelt

## Where to from here?

Lake Grace is represented on the working party so we will have input at a regional level. We intend to survey our district and create a database of artists and craftspeople so they can contact others with similar art practices. This will also be a part of the Wheatbelt artist's database.

An issue that really impacted on us was the lack of opportunities our youth have to experience arts and culture. There are many talented artists, craftspeople actors and musicians in our community who are under-utilized as a resource. What could happen if we did tap into these?

*Michelle Slarke*

## WildWatch Australia

is an online survey by ABC designed to find out more about wildlife in Australia's backyards. WildWatch Australia asks people to look out their windows so we can build a picture of settled Australia like we've never had before. The information you provide will give the ABC an insight into what is happening to our wildlife. **How about giving the survey a Lake Grace perspective?** Just go to [abc.net.au](http://abc.net.au) and click on wildwatch. The survey will be open until **May 7** with results published on **June 21**.



**24 HOUR EMERGENCY  
SERVICE PH: 98651206**

# LAKE GRACE & DISTRICTS HEALTH SERVICE

Providing health services to Lake Grace and the surrounding district, including Newdegate, Pingrup, Pingaring areas and beyond. The LG&DHS provides services aimed to treat emergencies, prevent illness, promote health, support individuals/families in their homes, reduce the impact of disease or trauma and to maintain independence and quality of life.

## Burns

The time of year is approaching when burns from fires (either wood, electric or gas) can occur. These accidents can be prevented by guarding the fire from small children, and keeping flammable materials away from the fire—remember prevention is always better than cure!

### **Do you know what to do when treating a burn?**

#### **1. Cool the burned area**

This is best done by **running cold water** over the burned flesh for **at least 20 minutes**—do not use ice.

#### **2. Get medical advice**

Immediately if the burn is:

- on the face or neck area
- not painful (means it has burned through the full skin thickness)
- area bigger than the palm of hand
- white in colour
- dirty (likely to become infected)
- during the healing process showing signs of infection (heat, swelling, pain)

**If concerned or wanting more  
information please phone the hospital.**

## **Asthma Education**

Janice Parker is an Asthma Educator based at Narrogin Hospital, visiting Lake Grace on 3rd June 2004 - appointments at the Medical Centre - ph: 98651208.

***\*\*Keep up-to-date with the latest  
asthma medications and devices  
available, for adults and children\*\****

## ♥ Heart Week ♥

*We hope you have time to visit the information display  
in the Lake Grace Plaza during heart week.*

### **Tips to remember:**

- Know your blood pressure and cholesterol levels
- If you have any concerns see your Doctor
- Physical activity is important for your heart
- Make healthy eating a priority
- Smoking causes many premature deaths
- Keep stress levels manageable

Many people these days are doing a good job in reducing their fat intake by using less fat in food preparation, choosing low fat dairy foods and buying leaner cuts of meat. But while these are healthy habits, much of the fat we eat is coming from prepared foods such as:

- Potato crisps—15 grams of fat per 50 gram packet
- Instant noodles—20 grams (average) of fat per packet
- Chocolate bar—20 grams of fat
- Popcorn at the movies—24 grams of fat in a large bucket
- Fettucine Carbonara—45 grams of fat per serve
- 2 pieces of fried chicken and chips—48 grams of fat

**So choose carefully when snacking!!**

**: Friday 7th May is "Dress Red for Heart" day!**

## **Community Health**

This area encapsulates a large portion of the programs and services provided for the general community. Services provided include **Chronic Disease management, Child and Maternal Health Services, Immunization, Parenting support and education, School Health screening** are offered.

For more information or to make an appointment contact **Elizabeth Trevenen** on ph: 9865 1251.



## LAKE GRACE COUNTRY WOMEN'S ASSOCIATION NOTES

Office Bearers elected for 2004 as follows:

President	Esme Lane
Vice President	Shirley Elliott
Secretary	Elsie Bishop
Treasurer	Irene McGlinn
International Officer	Lyn Smith

### Hostels

During the 1930s CWA members recognised the great need for student accommodation in country towns with High Schools, so in 1937 Western Division set up a committee to investigate the possibility of establishing hostels.

The first CWA Hostel for girls was opened in Northam in 1938, named Adamson House after Mrs Mary Adamson, President of that Division.

It started with 10 girls only but by 1942 a new dormitory had been added and the numbers increased to 40.

Two sudden emergencies occurred in 1945 and 1955 when the Avon flooded and washed through the premises. On the first occasion, much to the girls delight, Army personnel helped to evacuate them.

Janet McDonald House Albany Boys Hostel, opened in 1944, and as few years later a girls

hostel "The Rocks" also opened. Although owned by the Government it was run by CWA.

The Country High Schools Authority was established in 1960 and in 1962 combined with CWA to operate Caloola House Hostel in Narrogin Caloola being an Aboriginal word meaning "to climb".

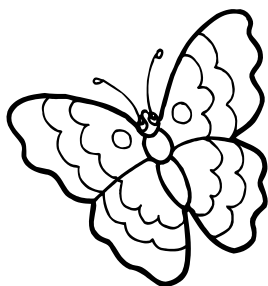
It opened with 24 girls and 24 boys in the main hostel and 28 girls in the annexe. Numbers later increased to 102.

Craig House Bunbury for boys and Bunbury Hostel for girls were also run by CWA in the 50's

1969 saw the end of a long and worthy record of CWA provision of accommodation for students at Country High Schools. It had spanned a period of thirty years, bridging the gap pending the acceptance of Government responsibility, and rendering invaluable service to many hundreds of young people.

Information from "Her Name is Woman"

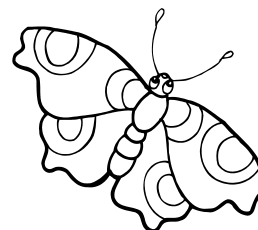
## *Fashion Parade*



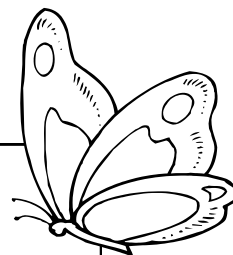
Friday 7th May  
Pingaring Golf Club

From 11.30am  
\$5.00 includes a

Soup 'n' Sandwich Lunch  
& Door Prize



*Kulin Fashions*  
New Season's Clothes  
All Sizes





## COUNCIL NEWS AND NOTES

### Shire of Lake Grace

PO Box 50 Lake Grace WA 6353 Phone 9865 1105 Fax 9865 1109 email [shire@lakegrace.wa.gov.au](mailto:shire@lakegrace.wa.gov.au)

#### Works & Services Update Roads

Council staff are currently widening and re-sealing 2.4km of Newdegate-North Road and have prepared a number of floodways for seal over the next two weeks.



With grant assistance from the Department of Transport, preparation work is also being undertaken to seal 50 metres at each end of the Lake Grace airstrip.

Staff will next be gravel sheeting sections of Tonkin Road and West Kuender Road.

Contractors have recently completed works on Hatters Hill Road (3 km final trim), 2.4km of gravel sheeting on Ardler Road and resheeted 5 km of Old Ravensthorpe Road. Gravel sheeting of 8km of Holt Rock South Road is currently in progress.

#### Buildings



Renovation of the Doctor's House is nearing completion. New floor and wall tiles have been fitted, walls painted and new appliances and cupboards will soon be

finalised. Staff are currently in the process of landscaping the grounds.

The Newdegate toilet block is progressing with brick works completed and roofing to commence next week.

The CEO house has been on hold for some weeks due to contractor shortages. Contractors have now been engaged and works are to proceed accordingly.

New Joint Venture houses in Bennett Street, Lake Grace have now been completed and tenants arranged. Works on the two units in Lake King are still in progress but should be completed shortly and expressions of interest called for tenants.

**With the completion of the above housing, Council will have 37 accommodation units under its care, control and ownership, inclusive of the Lakes Village and staff housing.**

The Bennett Street footpath has been completed and a number of homeowners took the opportunity to install crossovers. In accordance with the "Country Pathways" Grant funding provided by Department of Planning and Infrastructure, a pergola is to be installed at the junction of the path along Griffin Street to the east of town.



#### COUNCILLOR'S CORNER

Councillors continued to be active over the past month with many attending local Recreation Council and LCDC and Development/Progress Association meetings. Councillors continued their involvement in the housing developments taking a keen interest in the selection of materials and general quality control via on site inspections.

President Roberts recently attended a function in Ravensthorpe for the opening of its new medical facilities. During the visit Cr Roberts took the opportunity to convey community concerns about the nursing arrangements for Varley.

Cr Walker chaired the recent LEMAC meeting which discussed the Local Emergency Management Plan, general safety issues and emergency services requirements.

Cr Walker attended a meeting of councils in Dumbleyung to discuss the formation of a VROC (Voluntary Regional Organisation of Councils) to consider resource sharing and or the common purchase of goods and services. Whilst the VROC was not supported at this time there was agreement for cooperation on a number of issues, particularly in the area of tourism promotion and support for the Lake King to Norseman Road.

Cr Farrelly attended a WA Tourism Commission workshop—Destination Development Strategy designed to achieve growth in regional areas. It is important that Council continues its engagement with such strategies to ensure its communities receive maximum benefit from any new funding initiatives whilst waving the flag for local tourism.

Crs Lansdell and Taylor attended recent APB Zone Control Authority and Annual Ryegrass Toxicity Committee meetings respectively. The control of skeleton weed and wild dogs is becoming of increasing importance, particularly to the eastern areas of this shire.



# Will CBH Be Next?

Demutualised - Corporate (Trust not Control)

This newspaper article relates to AMP, which had a similar mutual structure to CBH and was Corporatised or demutualised. The AMP has reportedly lost in the vicinity of \$26 billion in the following six years of corporate management.

*Directors and Management failed in their fiduciary duties by Takver, Tuesday August 12, 2003 at 04:51 PM*

*It seems the Management and Directors 'failed' in their duties in 1998 when AMP was demutualised. Up until then AMP, as a mutual, was run for its members, the policy holders. By demutualising, the duty of the executive management and directors was no longer to the policy holders, but to the shareholders and investors. Executive Management and large investors had the most to gain from demutualisation. The policy holders and small shareholders have been ripped off. But it is more than this. The wealth of AMP was built up by Mums and Dads across Australia over 150 years. It is that accumulated wealth that has been squandered in just 5 years through the pursuit of ideological greed.*

*Even as a public company I would say the directors and management of AMP have spectacularly failed their fiduciary duties to their shareholders by embarking on more speculative business instead of concentrating on the core business of careful investment of policy holder funds.*

***This is not a matter of whether Governments can run business better, sometimes they can and sometimes not. This is a case of a successful mutually owned and operated business being demutualised and systematically looted of its wealth it has accumulated for several generations.***

THE CBH STRUCTURE - (CONTROL NOT TRUST )

CBH profits are distributed back to growers through services, in effect dividends are paid up front in the form of reduced service charges and improved storage and handling facilities to growers on every tonne delivered. The CBH structure is by far the most efficient for any company or group that provides services to its members, (the growers).

The \$2 share held by growers is in fact a fee required to become a member of the mutual structure. It in no way reflects total equity of the company or the benefits to the growers. Among the many benefits to CBH growers by using this mutual (co operative) structure are;

## **1. SECURITY and SUSTAINABILITY.**

Growers retain 100% control and ownership. It is near impossible for an outside party to mount even a friendly take over of CBH, let alone a hostile take over. To achieve their objective 75% of a grower poll must support the take over or any changes to the existing structure. The same conditions apply to most mutual structures. There are no conflicts of interest or outside investors including institutional investors to satisfy.

## **2. TAX EXEMPTIONS.**

The Cooperative structure of CBH qualifies for income tax exemption through section 50:40 of the Tax Assessment Act on any profits generated by income or capital gains.

The tax-exempt status also applies to Fringe Benefits Tax and enables CBH to minimise these costs in relation to employee fringe benefits. These savings are returned to growers in the form of reduced service charges and improved storage and handling facilities to growers on every tonne delivered.

## **3. RATES.**

CBH is a "Not for Profit" organisation and meets the criteria for rates exemptions worth in excess of \$3million per year. Under a corporate structure, CBH would be aligned with other corporates already paying full rates. These savings are returned to growers in the form of reduced service charges and improved storage and handling facilities to growers on every tonne delivered.

## **4. ADVANTAGES OVER CORPORATE STRUCTURES.**

- There are no institutional investors demanding a percentage of the profits and questioning the level of services to the growers.
- The board and management's prime duty is to the growers and not trying to balance the needs of growers with that of the shareholder investors, as is the case for a corporate structure. e.g.(AWB)
- The growers as a whole through the board mutually control the equity. The benefits (through services) are distributed to the individual growers in proportion to their participation and the equity benefit reflected back to the growers through lower service charges. It is also possible to give discounts on services within the system if required.
- Any grower who delivers to the system benefits whether they are landowners, share farmers or other organizations in receipt of deliveries (e.g. Churches, community service, social or sporting groups).

*Continued page 22*

# Avon Catchment Council

## *Nominations for community Members*



Do you live in the Avon River Basin, are committed to a sustainable environment and want to help make a difference?

The Avon Catchment Council, the region's principal natural resource management body, is seeking interested people for the following positions as Community Members on the Council.

### **Yilgarn Sub-catchment**

One member for a three year term

**One member for a two year term**

### **Lockhart Sub-catchment**

One member for a three year term

**One member for a two year term**

### **Avon Sub-catchment**

One member for a three year term

Sitting fees are paid and travel costs are reimbursed.

#### **ESSENTIAL CRITERIA**

- ◆ You live in your region
- ◆ You have a skills-based knowledge of the land, its biodiversity and water resources management
- ◆ In particular you need to be able to demonstrate:
  - ◆ leadership skills and a passion to ensure a sustainable future for the area
  - ◆ strong local community networks
  - ◆ good communication skills to enable you to represent community ideas and issues at Council and public forums
  - ◆ skills in one or more of the following
    - ◆ Sustainable Agriculture
    - ◆ Biodiversity Conservation
    - ◆ Farm Forestry
    - ◆ Water Management
    - ◆ Regional Development
    - ◆ Community Development
    - ◆ Land Use Planning
    - ◆ Knowledge of processes in
      - ◆ social-environmental interactions
      - ◆ economic issues affecting environmental sustainability

To obtain an Information Kit and Nomination Form please contact:

Your local Community Landcare Coordinator  
Your Shire Office, or  
The Avon Catchment Council on 9690 2250

**NOMINATIONS CLOSE on FRIDAY 28 MAY 2004**

Quairading Chamber of Commerce & Southern Avon BEC  
Present to the People of the Wheatbelt

## Quairading 2004 *Small Business Expo*

Quairading Town Hall

*Friday and Saturday - 11th and 12th June 2004*

**32 Guest Speakers and 34 Exhibitors**

**Guest Speakers:** Educators, Advisors, Government & Community Leaders, Politician Panel, Farmers Value –Adding, Successful Small Business Operators, Guest Sportspersons

**Exhibitors:** TAFE's – BEC's, Telecentres, Inventors, Author, Tourism Operators, Accountants, Banks & Financial Advisors, IT Service Companies

**Topics:** How to get started in Small Business, Successful Small Business Operators - They Tell, Entrepreneurship & Business Development, Small Business Marketing & Promotion Themes, Simple & sound Bookkeeping, Tourism & Community Development in Rural and Regional Australia

**8:00 am (registration) - 5:00pm**

Speakers commence at 9:00 am sharp on each day

**Free entry into main hall. Entry to expo talks — \$22 or \$38.50 for two days**

**Students \$2 - Group bookings available (20 or more)**

*Live Radio Broadcast and On Site Interviews*

**Contact: Kathryn Alexander on phone/fax 9641 2350**

*The Department of Agriculture and Narrogin Regional BEC present....*

# Learn the Secrets to Successful Exhibiting 'Best of Show'

The Department of Agriculture in conjunctions with the Narrogin and Wheatbelt Business Enterprise Centres gives you the opportunity to attend a one day training session in your area with Colin Green 'from Best of Show'.

Do you exhibit at the Dowerin or Newdegate Field Days?

Do you want more business from these shows?

Then this one day training is for you!

Colin will take you through the secrets to successful exhibiting focussing on the following:

Objectives and Targeting ♦ Focussing Your Marketing Mix ♦ Enticing Targets to

Sniff you Out ♦ Stopping Targets in Their Tracks ♦ Stand Design ♦ Staffing

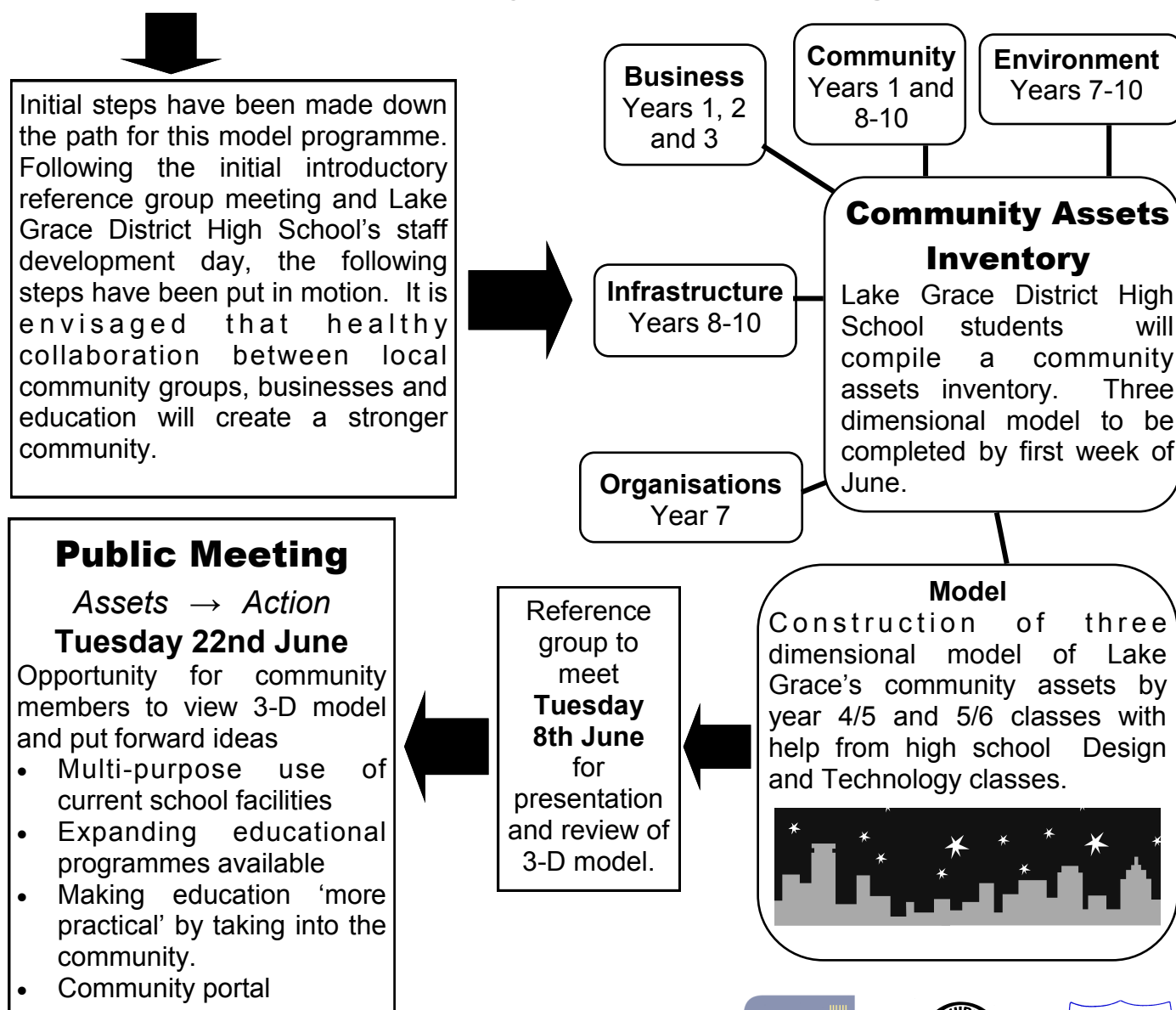
**Dates: 17th — 21st May 2004**





# ABCDE

## Asset Based Community Development through Education



**Reference Group:** Helen McWhirter, Nadine Owen, Lisa Parker, Helen Bennett, Suzanne Reeves, Grant Draper, Stuart Blackwood, Jeanette De Landgraft (President ICPE WA), Amanda Miller, Neville Hale, Debbie Clarke, Pam Lannin, Dr Murray Lake (RREAC), David Singe (WDC), David Platt (Project Coordinator).



Department of Education Services  
Rural & Remote Education  
Advisory Council



# Farmsafe WA Alliance Inc.

## **"Inspiring Safe Farming"**

### SEEDING SAFETY WARNING

Stress and fatigue are issues that will at times come to life once seeding gets underway on farms in Western Australia.

Farmsafe chairman, Tony Hiscock said that some farmers, keen to get their crop in, will sometimes sleep less and work excessively long days without taking appropriate breaks.

"After last year's drought, many farmers are already feeling financially stretched, and they know that it is important that this year's crops can rectify their bank balances," Mr Hiscock said.

"But with long-term stress and fatigue, comes the deterioration in their capacity to make correct decisions, the brain and the body also gets slower and this is when injuries can take place."

Farmsafe WA Alliance urges farmers to give thought to the safety of their families, workers, visitors and themselves. Given the enormous human and economic costs when injuries and illness occur, Farmsafe aims to help farmers avoid these costs by adopting an injury risk management program. Statistics indicate that farmers are one of the highest risk groups for occupational illness and injury, with an annual national cost to the industry estimated to exceed \$500 million.

**Detailed safety checklists are available through Farmsafe WA Alliance Inc's Managing Farm Safety Workshops. These one-day workshops show farmers how to include injury risk management in their farm business plan- and how to gain a discount on their workers compensation insurance premiums.**

On farms where such a program has not yet been developed, there are still a number of general practices which farmers can put into place to reduce the danger at seeding time:

Plan your program to avoid excessive fatigue; take regular short breaks for refreshment;  
Ensure that all machinery, equipment and work areas are in safe working condition and that guards (e.g. PTO) are in place

Tractors should have an approved ROPS (Roll Over Protection Structure) and seatbelt fitted, and seatbelts should be used; tractor rollovers are a major cause of farm injury and death;  
Do not allow passengers on tractors and trailing

implements;

Wear suitable clothing without loose attachments that can get caught up in machinery;

Many jobs will require earplugs, eye protection and/or dust masks;

Ensure appropriate supervision for all workers, family members and visitors- everyone's whereabouts must be known;

Those operating equipment should be adequately informed and trained in its use;

Beware of overhead powerlines when moving augers, and ensure that intake points are effectively guarded;

Check that fire extinguishers and first aid kits are readily accessible; keeping emergency numbers on hand.

Farmsafe WA Alliance Inc is a non-profit organisation, whose members are farmers themselves and so understand the pressures and difficulties of life on the land.

*Further information on Managing Farm Safety Workshops can be obtained from:  
Farmsafe WA Alliance Inc Ph 9359 4118 or by going to [www.farmsafewa.org](http://www.farmsafewa.org)*



**STAMP-IT**  
**RUBBER STAMPS**  
**& LASER ENGRAVING**

### NEED A RUBBER STAMP??

LARGE ARRAY OF SIZES AND FONTS  
TO CHOOSE FROM

DIFFERENT COLOURED INK PADS

SELF INKING

TO PLACE AN ORDER OR OBTAIN A  
QUOTE CONTACT THE LAKE GRACE  
TELECENTRE



## Forum to Improve Farm Safety

The death of a worker, child or bystander occurs on a farm somewhere in Australia on average every three days.

Agriculture is second only to the mining industry in the number of work-related deaths recorded in WA since 1988.

In the keynote address at a farm safety forum held in Perth today, Consumer and Employment Protection Minister John Kobelke said it was crucial for farmers to set priorities in farm safety and improve safety and health in the industry.

"The agriculture sector accounts for about five per cent of all lost time injuries and 23 per cent of all work-related fatalities," Mr Kobelke said.

"The statistics are a real cause for concern and we all need to work together to take a good hard look at the industry."

Participants in the forum included Agriculture Minister Kim Chance and representatives from Government and peak bodies from across the farming industry.

Mr Chance said the most alarming fact was that the number of recorded injuries and disease did

not represent the total number of incidents.

"There are many injuries - such as back injury, cuts and fractures - that are not reported to hospitals, workers' compensation sources or insurance providers," he said.

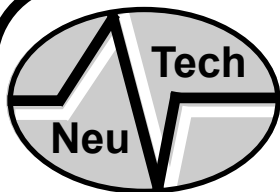
"Consequently, the true extent of injuries and the impact they have on the operating profit of the farm business are not quantified."

The Minister told the forum farm workers' compensation premiums were among the highest of any industry and there were other costs of injuries and disease, such as medical care, replacement labour, and loss of productivity.

"One way farmers can improve their knowledge and skills in occupational safety and health is by participating in a 'Managing Farm Safety' training program provided by FarmSafe WA," he said.

"I am pleased to say the Department of Agriculture has been able to subsidise more than 800 Western Australian farmers to attend FarmSafe training."

Farmers wishing to take part in a training program should contact the WA Department of Agriculture on 9368 3333.



### NEU-TECH AUTO ELECTRICS

*FOR ALL YOUR ELECTRICAL NEEDS*

Stubbs Street, Lake Grace Phone: 9865 1164 Fax: 9865 1543



If you have recently purchased a new turbo diesel ute, car, truck or tractor; then you should seriously consider a turbo timer. These devices when fitted can save costly turbo meltdowns and vehicle down time. Easy to install (most plug into original ignition switches) and simple to operate, they safe guard your vehicle from accidental premature shutdown. Drop in and see Ross now for more details.

Currently in store we have the latest in Hella high intensity discharge work lights. They produce a white/blue light of very even intensity and have a number of lens/size options. Anyone interested in seeing these lights in operation or for a comparison should contact Neu-Tech on 9865 1164.

**BOSCH**



**ACDelco**

**KENWOOD**



## Students Gain Award

### *Reflection on "the Lake Grace Project"*

At the end of 2003 three Curtin students, Catherine Hendry, Judy Stewart and Anna Strevett were awarded the Certificate III in Art Fundamentals. They studied in Lake Grace as remote students through Curtin University Esperance. These students produced work of an extremely high standard and this is a great achievement.

This is the culmination of an education project began in 1999 to deliver courses to people in Lake Grace from Curtin Esperance. A special project was instigated primarily directed at delivering higher education in Lake Grace.

Art Studies were among the courses students enrolled in at Curtin and a dedicated group of people began studying art. Studies have been wide ranging and include: painting, drawing including concepts of abstraction, research and development of ideas, printmaking and design.

As well as the students gaining their Certificate in 2003 other students included Margaret Carruthers, Annie Slarke, Genevieve Curtin, Pam Lannin, Deborah Badger and Linda Vlasich have all completed units in art. Two students Tania Spencer and Kerrie Argent have gone on to study the Degree in Art. The opportunities for study are ongoing and will see further goals achieved.

The Art Studies program was supported by lecturer visits and video conference links through the Lake Grace Telecentre. A "Mentor Program"



*Judy Stewart and Catherine Hendry hold their hard-earned certificates.*

was also instigated to support the program and the students.

Melissa Cugley, as the mentor for art, was dedicated and very helpful in this role and instrumental to the success of the program. Valuable mentor support is also given by Michelle Slarke in the degree studies.

The success of the program is due to many factors, not least the commitment and enthusiasm of the students. The students have achieved their goals and have produced a very high standard of work. The cohesiveness and group support of the dedicated "art people" in Lake Grace has made the program a success. The students have worked individually and as a group to achieve success in isolation overcoming the "tyranny of distance".

The life of Lake Grace is enhanced by the creativity and enthusiasm of its artistic community. The ongoing fertility of the cultural and artistic life of Lake Grace and its surrounding areas is reinforced by people striving and achieving the levels of competence and understanding that these students have attained. The importance of this should never be underestimated.

*Peter Henson*



*Graduating students Judy Stewart and Catherine Hendry with lecturer Peter Henson*

# Avon Catchment Council



## *Have Your Say about the Draft Avon Natural Resource Management Strategy! - Your Feedback is Important*

*You are invited by the Avon Catchment Council to read the draft Avon Natural Resource Management Strategy and to comment using the feedback form.*

The formal community consultation period is currently underway and it is important that you take this opportunity to provide input to the document.

The draft 'Avon NRM Strategy' has come a long way in a very short period of time. The document has had an initial assessment by the Australian and State Governments and deemed advanced enough to begin our Formal Community Consultation period. This is the next stage in the process of gaining accreditation of the Strategy and developing the Investment Plan that will assist us to implement the major actions identified.

Consultation is the next very important step in the process of gaining accreditation of the Avon NRM

Strategy. Gaining Accreditation will ensure funds will flow into the Avon via the Natural Heritage Trust 2 and the National Action Plan for Salinity and Water Quality Management Programmes. Funding for these programmes is from both the Australian and State Governments.

Stakeholders from many areas have been involved in the development of the Strategy to this point. Your involvement in this consultation period is essential for the Avon Catchment Council to be confident that it has "got it right".

We look forward to receiving your written feedback by May 14<sup>th</sup> 2004. For further information, please contact Gemma Walker (Avon Catchment Council Marketing and Communications Manager) on 08 96902250 or [gwalker@agric.wa.gov.au](mailto:gwalker@agric.wa.gov.au).

Please visit our website [www.avoncm.org.au](http://www.avoncm.org.au) or call 08 9690 2250 today for copies of the draft Strategy and feedback form.

There will be **no steak night** at the  
lake grace sportsman' s club on

**Saturday 8th May**

Patrons are welcome to purchase tickets to the  
hockey club ' s ' under the sea' function.

Get ready to test out your general knowledge

## Will CBH Be Next? *(continued)*

Distribution of benefits is through participating tonnes; there is no difference between large or small growers per tonne other than the ratio of product delivered.

There are no equity problems between various entities, coming or going, forming new or dissolving old partnerships, or family members joining or leaving. There are no financial impediments.

- Equity benefit does not effect member's application for drought assistance or other government assistance schemes.
- Banks are unable to dictate or access the benefits in any manner.
- There are no taxes or commissions as there would be if share equity has to be transferred between parties.
- No succession equity problems when handing over to the next generation.
- More opportunity for open transparency and less commercial confidentiality.
- Ownership and control is always in the hands of the current growers.

There is grower retention of intellectual property.

CBH is a very lucrative sustainable asset owned by all growers for the sole benefit of growers. Too often in the past governments, community and grower entities have parted with similar assets (e.g. Telstra, Commonwealth Bank, Qantas, R&I Bank, SEC, Airports, Railways, AWB, and Wesfarmers,). This benefits the current few of the day from the goodwill of the previous generations and at the expense of the future generations who will pay dearly for the use of those assets into the future.

This is not to say the current structure will remain identical forever as it is constantly changing now and will continue to change as it adapts to the economic environment and growers needs into the future. The H.B.F. and the R.A.C are just a few of many organisations that utilise similar structures to benefit their members. The basis of the current structure has the ability to keep W.A. growers as leaders in the grains industry, to be the most competitive, profitable and sustainable Australian growers by far, well into the future.

Remember;

**Trust is good** - Corporate

**Control is better** - Grower co operative

W.A. Newman.

### Great Southern Stock Aids

ESTABLISHED 1988

#### Mineral Stock Lick for Sheep and Cattle

- Tried & proven loose mineral mix
- Locally produced & competitively priced
- Contains RKB Ruminant Premix, including vitamins A, D & E
- Available in bulk or bags
- Special mixes available upon request

**Now Available from  
Landmark LAKE GRACE**

Please contact **Grant O'Neill**  
Ph: 9865 1126 Fax: 9856 1311

### Local 4Farmers



Agricultural Chemical Agent

**Greg Argent**

Ph/Fax = 9865 4042

Mobile = 0428 654 043

*Ring for all your chemical  
enquiries or needs*





# NIGHT WATCH



Welcome to Night Watch for the fortnight from midnight Friday 7th to midnight Friday 21st May.

Comet Neat is now very bright in the western night sky at 0.9 magnitude in the constellation of Canes Major on Friday night, and is moving north into Puppis, Monoceros and Canis Minor. Canis Major is where the brightest star in the night sky, Sirius, is in the west, fairly high.

Lower down in the west north west sky is Comet Linear at 1.1 magnitude in Cetus and is moving towards Comet Neat and they will be close together at the end of the month.

Our local star, the Sun, starts in Aries then will have moved into Taurus on the 14th.

The Moon on the 11th at 6:45pm will be at the last quarter phase in Capricornus, rising at 1.10pm and setting at 11.23pm. The new moon, on Wednesday 19th at 12:52pm, is in Taurus. On Friday 21st at 8pm, the moon will be at apogee (furthest), at 406,264Kms in Taurus, rising at 8:40am and setting at 6:33pm.

Mercury, in Aries, rises around 4:46am in the morning sky and will be at its greatest elongation west on the 15th at 26°, and start to rise later each morning. On Monday 17th, Mercury will be 3° south of the moon.

Venus, in Taurus, sets around 7:22pm, setting 2 minutes earlier each night at a very bright -4.5 magnitude and can be seen in the daylight sky. Venus will be 0.3 degrees south of the moon on Friday 21st, setting at 6:40pm.

Mars, in Gemini, sets around 8.00pm and setting around 1 to 2 minutes earlier each night at around 1.7 magnitude.

The giant gas planet, Jupiter, at a bright -2.1 magnitude, sets around 1.26am in the constellation of Leo, setting 4 minutes earlier each morning.

The ringed planet, Saturn, is in Gemini and sets around 8:40pm at 0.0 magnitude. Saturn sets 4 minutes earlier each night.

Uranus, in Aquarius at magnitude 5.9, rises around 1am, rising 4 minutes earlier each night and will be 5° north of the moon on the 12th.

Neptune, in Capricornus at magnitude 7.9, rises around 11:26pm, rising 4 minutes earlier each night. Neptune will be 5 degrees north of the moon on Tuesday 14th.

Pluto, at 13.8 magnitude in Serpens, rises around 7:50pm and 4 minutes earlier each night. A telescope is needed.

Meteors can be seen in Sagittarius on the early morning of Wednesday 19th at around five per hour.

On January 2nd, after a nearly five year journey, NASA's Stardust spacecraft successfully flew by comet 81p/wild 2 and snared samples of dust to bring back to Earth. The 1 milligram of dust will arrive back in January 15th 2006. The dust should be about four and a half billion years old.

Did you know that the colour of the sky is really violet not blue, well it really is, and it is because your eye has a bias because the retina has a preference for green.

Date	Rises	Sets	Date	Rises	Sets
8 May	6.43am	5.23pm	15 May	6.48am	5.18pm
9 May	6.44am	5.22pm	16 May	6.49am	5.17pm
10 May	6.45am	5.21pm	17 May	6.49am	5.16pm
11 May	6.45am	5.20pm	18 May	6.50am	5.16pm
12 May	6.46am	5.20pm	19 May	6.51am	5.15pm
13 May	6.47am	5.19pm	20 May	6.51am	5.15pm
14 May	6.47am	5.18pm	21 May	6.52am	5.14pm

Since 1950, people have looked in vain for alien civilisations among the stars. All sorts of explanations have been given for their absence. There is a natural and plausible explanation. For more than 90 percent of the galaxy's history there have been deadly explosions that would have sterilized planets at huge ranges. It was thought until recently that the most violent explosions in the universe were supernovae, lethal to a planetary civilisation at fifty light-years or less. Now we know of "hipernovae" or gamma ray bursters, caused, apparently when two neutron stars collide. These can kill a planet full of people many thousands of light-years away! If you ever see a blue light in the sky about the size of the full moon it is a fair bet that within a few hours everyone on Earth will be history.

*Maurice Gilson - a member of the Astronomical Society of WA*

16 Clarke Ave, Lake Grace.

Tel 9865 1516

Visitors welcome any time



## Canberra converges on the Wheatbelt

BUSINESSES and community groups who have been confused about Government funding, can now attend a GrantSmart Expo in York to have all their questions answered by 16 Australian Government Departments from Canberra who will be in the Wheatbelt for one day.

On May 25 staff from Departments including aged care, industry, exporting, technology and regional services will be available to speak to businesses, community groups and local government authorities about how to secure funding for projects or to expand your business.

The GrantSmart Expo will provide attendants with information on funding options and the opportunity to meet funding agency staff, hear about their programs and grants, explore funding mixes for your business or project and discuss your ideas with people keen to help.

There will also be several successfully funded Wheatbelt projects on display such as the Gingin Gravity Discovery Centre and Heartlands Regional Branding who will discuss one on one with attendants how they were successful in achieving funding, lessons learnt and project outcomes.

If you want to be informed about the latest business and community funding opportunities, the GrantSmart Expo is a must. The Expo will also feature workshops on how to write successful grant applications.

The Expo will be held at the York Town Hall on Tuesday May 25 2004 from 10am to 4pm for only \$33 per person (including lunch).

For further information about the Expo or to register visit [www.wheatbeltacc.com.au](http://www.wheatbeltacc.com.au) or contact Jo Alvaro on 9041 3716.

The GrantSmart Expo is a project of the Small Business Answers programme, funded by the Australian Government through AusIndustry and auspiced by the Wheatbelt ACC in partnership with the BEC network.



An Australian Government Initiative

**AusIndustry**



### Small Business Answers

## Cards with a View cracks the US market *with help from Austrade*

WHEATBELT Artist Meagan Gardiner has cracked the United States market and will now explore new markets in Asia, after being accepted into Austrade's New Exporter Development Programme.

Ms Gardiner attended a craft fair in San Francisco to help her business "Cards with a View" get into the expanding market in the US and now receives 10 to 12 emails a day from the US, largely as a result of a small editorial in an American magazine and her new website.

"I operate my business differently since being involved with Austrade. I've learnt a lot, especially about marketing. There's nothing that sells my work like samples," she said.

"People can actually touch something I've produced. I now publish a regular coloured newsletter especially designed for the US market."

"I find that money spent and skills learnt on exporting transfer to the local market. Spending money on export is coming back to me in export business, and I'm also getting cash back from the Export Market Development Grant", she said.

Ms Gardiner will be one of several grant recipients who will be present at the GrantSmart Expo in York

on May 25 to talk to local people about their experiences.

Hosted by the Wheatbelt Area Consultative Committee (ACC), GrantSmart will show local businesses and community groups how to get into export, or receive development funding or other funding opportunities through Australian Government.

The inaugural GrantSmart Expo will bring Department representatives from Canberra for businesses in the region to have the opportunity to talk face to face about the funding programs available for small business and some of the other grants and loans that are available, as well as the non financial programs. This is a great opportunity for local businesses to deal direct with the decision makers that work on these programs to find out what has been successful and what may be.

The GrantSmart Expo will be held at the York Town Hall on Tuesday May 25 from 10am to 4pm at a cost of only \$33.00 which includes lunch. For further information about GrantSmart or to register visit [www.wheatbeltacc.com.au](http://www.wheatbeltacc.com.au) or contact Josephine Alvaro on 9041 3716.





# Humour



## BURGLAR BILL GETS A FRIGHT

A burglar broke into a house one night. He shone his flashlight around, looking for valuables, and when he picked up a CD player to place in his sack, a strange, disembodied voice echoed from the dark saying, 'Jesus is watching you.' He nearly jumped out of his skin, clicked his flashlight off and froze.

When he heard nothing more, he shook his head, clicked the light back on and began searching for more valuables.

Just as he pulled the stereo out to disconnect the wires, clear as a bell he heard, 'Jesus is watching you.'

Freaked out, he shone his light around frantically, looking for the source of the voice. Finally, in the corner of the room, his flashlight beam came to rest on a parrot.

'Did you say that?' he hissed at the parrot.

'Yep,' the parrot confessed, 'I'm just trying to warn you.'

The burglar relaxed. 'Warn me, huh? Who the hell are you?'

'Moses,' replied the bird.

'Moses?' the burglar laughed. 'What kind of stupid people would name a parrot Moses?'

'Probably the same kind of people that would name a Rottweiler Jesus,' the bird answered.

## COCKROACH HORRORS

A man was sitting at home one evening, when the doorbell rang. When he answered the door, a six-foot-tall cockroach was standing there. The cockroach immediately punched him between the eyes and scampered off.

The next evening, the man was sitting at home when the doorbell rang again. When he answered the door, the cockroach was there again. This time, it punched, kicked and karate-chopped him before running away.

The third evening, the man was sitting at home when the doorbell rang. When he answered the door, the cockroach was there yet again. It leapt at him and stabbed him several times before running off. The gravely injured man managed to crawl to the telephone and summon an ambulance. He was rushed to intensive care, where they saved his life.

The next morning, the doctor was doing his rounds. He asked the man what happened, so the man explained about the six-foot cockroach's attacks, culminating in the near-fatal stabbing.

The doctor thought for a moment and said, 'Yes, there IS a nasty bug going around.'

## GO FOR IT MAMA

It's a sunny morning in the Big Forest, and the Bear family is just waking up. Baby Bear goes downstairs and sits in his small chair at the table, and looks into his small bowl. It is empty. 'Who's been eating my porridge?!' he squeaks.

Papa Bear arrives at the big table and sits in his big chair. He looks into his big bowl, and it is also empty. 'Who's been eating my porridge?' he roars.

Mama Bear puts her head through the serving hatch from the kitchen and yells, 'For God's sake, how many times do we have to go through this?'

'It was Mama Bear who got up first, it was Mama Bear who woke up everyone in the house, it was Mama Bear who made the coffee, it was Mama Bear who unloaded the dishwasher from last night and put everything away, it was Mama Bear who went out in the cold early morning air to fetch the newspaper, it was Mama Bear who set the table, it was Mama Bear who put the cat out, cleaned the litter box, and filled the cat's water and food dish. And now that you've decided to drag your carcasses downstairs and grace Mama Bear's kitchen with your grumpy presence, listen good, 'cause I'm only going to say this one more time....I HAVEN'T MADE THE DAMN PORRIDGE YET!'

## SEE YOU LATER ALLIGATOR

A young blonde was on holiday in the depths of Louisiana. She wanted a pair of genuine alligator shoes, but was very reluctant to pay the high prices the vendors were asking.

After becoming very frustrated with the 'no haggle' attitude of one of the shopkeepers, the blonde shouted, 'Maybe I'll just go out and catch me my own alligator so I can get a pair of shoes at a reasonable price!'

The shopkeeper said, 'By all means, be my guest. Maybe you'll get lucky and catch a big one!' Determined, the blonde turned and headed for the swamps, set on catching herself an alligator.

Later in the day, the shopkeeper was driving home when he saw the young blond waist-deep in water, shotgun in hand. Just then, he sees a huge three-metre alligator swimming quickly towards her. She takes aim, kills the creature and with a great deal of effort hauls in onto the bank.

Lying nearby were several more of the dead creatures. The shopkeeper watches in amazement. Just then, the blonde flips the alligator on its back and, frustrated, shouts out, 'Damn it, this one isn't wearing any shoes either!'



## ST JOHN AMBULANCE SUB CENTRE LAKE GRACE

### *Ordinary People doing Extraordinary Things*

Please consider the possibility of becoming involved with our Sub Centre.

Be assured you will not be expected to do anything you feel uncomfortable with – we accept not everyone would like to go out in the ambulance.

You could help in administration, cleaning, re-stocking equipment in the building and the ambulance, vehicle maintenance (basic) or do general odd jobs around the Centre.

The job of an ambulance officer is very rewarding and, with training and commitment, within most people's capabilities. The next training course will be conducted by St John's, Perth, starting in September in Lake Grace. If you have a First

Aid certificate, you may like to become familiar with the layout of the ambulance and with driving it.

Should we ever be faced with an accident involving multiple casualties, it would be comforting to know we were prepared, and, with some basic training and a good plan, could work as a team and make a difference to the end result.

Training nights are on the first and third Thursday of each month at 7:00pm. Our AGM is Thursday 27th May at 7:00pm. Feel free to come and have a look and, if its not for you, that's OK.

Thank you for your interest and support.

*Ollie Farrelly, Chairperson (Acting)*

## *Library & Resource Centre News*

### **OPENING HOURS:**

9.00am – 5.00pm  
Mon, Tues, Thurs, Fri  
Closed Wednesday  
Phone No: 9865 1185

Our new book exchange has just arrived with a selection of adults and children's non-fiction, fiction, videos, DVD's, audio cassettes and CD Roms. Plus a set of 2004 World Book Encyclopedias (great for school projects).

Our book exchanges are arriving monthly and we will keep you informed. If you are looking for a special book, video or audio cassette and we do not

have it on our shelves, please ask the staff and we will order it for you.

Lego sets and puzzles for hire at \$1.10 each. Laminating and a book binding service are also available.

Reverse cycle air-conditioners have recently been installed for everyone's comfort and they are great.

We welcome all new members, so come along and join the library.

We look forward to seeing you soon.

*Cheers, Linda and Marcelle.*



# COUNCIL NEWS AND NOTES

## Shire of Lake Grace

PO Box 50 Lake Grace WA 6353 Phone 9865 1105 Fax 9865 1109 email [shire@lakegrace.wa.gov.au](mailto:shire@lakegrace.wa.gov.au)



### LOCAL GOVERNMENT EXTRAORDINARY POSTAL ELECTION

Shire of Lake Grace  
- Newdegate Ward

## CALL FOR NOMINATIONS

(Local Government Act 1995, s4.47)

An extraordinary postal election will be held on Thursday 17 June 2004 in the Newdegate Ward of the Shire of Lake Grace to fill a vacant councillor position for a term to expire on 7 May 2005.

#### Nomination Time and Place

Nominations open on Tuesday 4 May 2004 and close at 4.00 pm on Tuesday 18 May 2004.

Nominations must be lodged with the Returning Officer:

- at any time during the above period by arrangement; or
- between 3.00 pm and 4.00 pm Tuesday 18 May 2004 (close of nominations) at the Shire of Lake Grace, Stubbs St LAKE GRACE WA 6353.

#### Nomination Requirements

Candidates are required to lodge with the Returning Officer:

- a completed nomination in the prescribed form, signed and witnessed. This form is available from the Returning Officer, The Western Australian Electoral Commission of the Shire of Lake Grace.
- a single A4 page profile containing not more than 150 words of information about the candidate
- a nomination deposit of \$80 (cash, bank cheque or postal order)
- a recent passport-sized photograph (optional)

Where an agent lodges a nomination on a candidate's behalf, it must be in the prescribed form with a written authorisation signed by the candidate.

The documents may be hand delivered, posted or faxed to the Returning Officer and must be received by the close of nominations.

Full details about eligibility and nomination procedures for prospective candidates can be obtained by contacting the Returning Officer, Terrence Gladish, on 9865 1047 or the Western Australian Electoral Commission on 13 63 06.

**Terry Gladish**



### Bouquets

On behalf of Council special thanks to Judy Stewart for the lovely wreath she made for the Anzac Day Ceremony held in Lake Grace last weekend.

*'Your efforts are very much appreciated.'*

### STAFF CHANGES

Farewell and best wishes to Felix Taylor who has retired after 17 years on the Shire Works Crew.



A send off was held at the Depot last Friday afternoon, Deputy Shire President Andrew Walker thanked Felix for his commitment to the Shire and on behalf of Council and staff wished him all the best for a happy and well earned retirement.

We welcome the following new staff members, wish them all the best in their new positions and hope they enjoy their time at the Shire.



Naomi Duckworth - replacing Kate Hawley at the office whilst Kate is on maternity leave.



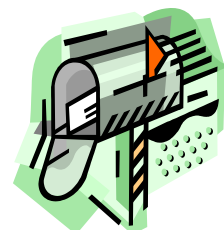
Tim Andrews - working from Newdegate on the Town Maintenance Crew  
Brad Kennedy - Casual Construction Crew/Plant Operator

### AGRICULTURAL AREA (AA) DAM RATIONALISATION PROJECT

The Water Corporation and Department of Environment - Water and Rivers (DEP) are currently undertaking a rationalisation project on all AA dams throughout regional WA. There are 42 such dams in the Shire of Lake Grace and the DEP is seeking advice on which AA dams the community considers to be of strategic importance.

The DEP has identified 15 sites that may have strategic value but understands the community may have an alternative view.

To assist in obtaining community comment the Shire will shortly be sending out an information sheet seeking comment. The flyers will be distributed via a mail-out through the Post - **Watch your mail box and tell us what you think!**



## Measure Up Workshop - *Saturday 24<sup>th</sup> April*

Fourteen community volunteers recently attended a three hour workshop with Alan Surgener, Technical Production Manager extraordinaire from Country Arts WA. This was organised by the Lake Grace Development Association.

It was great to have some of the students from our school past and present at the workshop. Thanks to them for making time during the holidays.

The idea of the workshop was to gain more knowledge about sound, lighting and stage management specifically related to our local facilities.

Our Shire Hall was the focus and unfortunately limited time stopped us from reviewing the Recreation Pavilion.

Alan's lively discussion urged us to think outside the square when tackling sound and the acoustic difficulties in the hall. He gave us ideas to reduce sound waves bouncing around.

Thick, heavy materials or baffles on the walls and suspended around the hall were recommended. Also other basic ideas such as not using the stage for all productions, trying to have the production more immersed in the audience by having horseshoe shaped productions or greater use of the sides of the hall.

Teaching basic use of microphones and placement of speakers were also identified as important considerations when producing an event.

Many questions were asked and it was agreed that it would be a great benefit if more "hands on" expertise was available whilst preparing a production. This may be a possibility in the future.

It was an interesting few hours and we hope to follow up on his recommendations in the future.

After we left the workshop, Alan did the "Measure Up" of the Hall. The "Measure Up" includes the dimensions of every room, how many rooms there are, kitchen facilities, power supply, number and positions of power outlets. This will then be put on to the Country Arts website. So, should there be any show wanting to visit Lake Grace and they need to know this information then they only have to visit the website. This will save our volunteers from having to run about sourcing the information for them.

A big thankyou to all who attended and to the Shire of Lake Grace for covering the workshop fees.

*Jill Duckworth  
Secretary LGDA*

## YOUTH ADVISORY COMMITTEE

Unfortunately, due to staff changes, the Friday Night Activity 'Night Golf' has been postponed yet again. Rodney Thornton is no longer the Shire Sport Coordinator and the new person in the position is still getting acquainted with the job.

This Friday evening we will have a Video and party food for tea. The doors will open at 6.30 pm and

parents are asked to collect members at 9.30 pm. The cost will be \$6 per person. Supervisors are Jayne Bushby and Debby Clarke.

The supervisor for Wednesday the 12<sup>th</sup> of May is Nora Battison and for Wednesday the 19<sup>th</sup> of May, Louise Trevenen.

*Debby Clarke*

## Varley Voice Advertising

Advertise your business in the Voice today! Low competitive rates.

*Varley Voice § c/o Varley Telecentre*

**1/4 page - \$5.00 § 1/2 page - \$10.00 § Full page - \$15.00**

*All adverts need to be in by 12 noon Tuesdays. Design your own  
or let Julie do it for you.*

Telephone - 9875 1075 § Fax - 9875 1073



# LAKE GRACE HOCKEY CLUB



Surrounded by players from the Lake Grace Hockey Club, Geoff Sabourne displays his 'L' plates, it is expected that he will be upgraded to 'probationary' plates in the near future.

## C Grade Hockey:

Although Lake Grace is fielding a very young side, they are showing a great deal of courage and determination.

Their first game was at home against Kondinin.

Score: 6-nil in Kondinin's favour

Coaches Award: Emily Howe

The second game on May 1st we travelled to Corrigin.

Score: 4-nil in Corrigin's favour

Coaches Award: Sheridan Fyfe



Health Services Manager June McEncroe receiving the new bed funded by the Lake Grace Hospital Auxillary. June (left) displays the functions of the bed to Auxillary representatives (l to r) Pat Strevett, Shirley Elliott, Sheryl Smith, Dot Kennedy and Dorothy Reid.

## Art Exhibition

New works by

**Rachel Coad**

*hosted by Gullotti Galleries*

Monday 17 May – Friday 28 May

at Gullotti Galleries

357 – 365 Murray St, Perth

Opening times:

Monday – Saturday

10am – 5pm

# LAKE GRACE HOCKEY CLUB

24th April: As Kondinin are not fielding a B grade side this season, only the A grade team played in the senior competition this week.

Our first game was always going to be a challenge considering we were fronting up to the previous season's grand final runners up. We expected a hard game and were not disappointed with the efforts of the opposition.

A penalty stroke awarded to the Kondinin side in the first ten minutes of the game certainly put Amanda Milton, in goals, on her toes and glory to her for stopping the stroke. Amanda was kept on her toes for the rest of the game, with plenty of shots taken by Kondinin and all, bar one lucky little sod, getting sent on their way to the sideline. Fantastic work by the full backs, Di Desmond and Belinda Bowron kept our goal safe many times.

Great effort by Nat O'Neill at right half back and consistent positioning by Jodi Pearce, on the wing, and Jackie McGlinn, at inner, got the ball moving down to our half and into the goal circle on many occasions, unfortunately not ending in a goal.

Fiona Chatfield showed us her usual speed and skill at centre half back with some great interceptions in the second half. We left the field with a 1-0 loss but felt that we all put in 100% on a particularly hot day. Thank you to all the girls who turned up for reserves, we may have overdone it this week!

Coaches awards to Belinda Bowron (2) and in a break from tradition, one point to Amanda Milton and to Alison Medlen.

Geoff Sabourne has undertaken his hockey apprenticeship and we expect him to be onto his P plates by the end of May. Thanks Geoff.

1st May: Traveled to Corrigin with blustery conditions to greet our B grade on their first game for the season.

The B grade team did a fantastic job, taking into consideration that there were only three girls on the side who had ever played hockey before. Corrigin's team finished last season very well and we expected the girls to find the going tough. Coralee Pinney came back to fill the goalie position and stopped a penalty stroke in the first five minutes of the game. Well done Coralee! Well done also to Wendy Abrahall and Marisha Cook at full back.

Penny Willcocks and Tracie Buntrock both ran hard at inner and had some very effective runs into the forward line. Corrigin scored five goals in the first half and only one in the second so the girls pulled together in the second and got working

better as a team. All looking forward to next week.

Coaches awards to Jolene Hodges (2) and Wendy Abrahall (1).

A grade had a fantastic game against Corrigin, we attacked hard and Jackie McGlinn scored a great goal in the first half after the ball had been brought down from the back line at speed by the forwards. The whole team pulled together and made the effort to do what the coach asked of us, which made Anna Taylor happy enough to do a jig in the Corrigin pub.

Tireless efforts from the full backs, Di and Belinda and great marking from Melissa Taplin and Marisha Cook at right half back keeping their wing out of the game kept Corrigin's score to one in the second half.

A great team effort saw us leave the field with a 1-1 draw, which felt like a win to us!

Coaches awards to Danielle Robertson (2) and to Fiona Chatfield (1).

A new weekly award has started, sponsored by Geoff and Denise Sabourne, which acknowledges the person putting in a great effort for the club. The recipients for the last two weeks are Genni Curtin and Nadene Owen who have put in many hours of their time getting the Junior boys team off the ground. Well done Genni and Nadene. Thanks very much to Geoff and Denise.

Great to see players out there getting some extra practice during the week, please remember though to use the practice goals, not the field. With four teams playing we need the goal area kept in good condition for the games.

Don't forget the **Under the Sea Fancy Dress Dinner** on this Saturday night at the Sportsman's Club, see you there.

*Play Hard, Party Harder*  
Danielle Robertson

## Junior Hockey Coaching Clinic

At Corrigin

Sunday 16th May,

9am to 11am

\$20.00 per player or \$50.00 family of 3

Run by Tristram Woodhouse and a mix of Australian and Perth Thundersticks players

Bus may be going if enough interest

## It's a First! *(continued)*

uniforms. Very generous sponsorship by Neu-Tech Auto Electrics and Consultag has not only provided the boys with a smart new uniform but also covers weekly awards.

Lake Grace Hockey has a colourful history that extends back to 1931. For a brief two year period (1938-1939) a men's team was formed. This however proved to be a short-lived endeavour. In looking back through the history of our sporting town we have never fielded a boys hockey side — so, boys, you will go down in history!!

The majority of the boys have never played hockey before but, from what we've seen, the

tenacious attitude of the players has proved them to be a match for the other teams. The expertise of coach Lindsay McGlenn is also a guiding force in bringing together this inaugural group.

Lake Grace U 16's have joined the Roe Districts Hockey Association and will play against Naremburn, Bruce Rock, Kulin, Kondinin and Corrigin (who have had established teams for some years). Karlgarin/Hyden have also joined the competition for the first time this year.

We wish them all a very enjoyable season and well done.

## BOYS U/16 HOCKEY

### Round 1 - 24th April

Lake Grace enjoyed their first game ever on home turf against Kondinin.

It took Lake Grace some time to settle in and establish their positions.

The majority of the game was played in Lake Grace's defending position with Alex Reeves, Ashley Mahoney and Aaron Smith working hard at keeping the ball out. Not forgetting the quick reflexes of our goalie Braden Frost who appears to have a natural ability in this area.

Kondinin had the opportunity on many occasions to score from short corners, but were unfortunate - the upside was that it gave Lake Grace a lot of practise!!

Late in the first half Kondinin managed to score off a Lake Grace stick. All in all it was a great start to the season.

Final Score: 1-0 Kondinin  
Coaches Award: Aaron Smith

### Round 2 - 1st May

Lake Grace travelled to Corrigin this week and what a match!!

It was anybody's game, with the ball being evenly distributed throughout the field.

The Lake Grace forward line was taking greater ownership of the ball this week and had some good opportunities - (maybe it was Corrigin's 6 ft goalie that put them off???)

Lake Grace continued to maintain a solid defence, and after last week's short corner practise it paid off this week.

Both sides battled strongly, putting in 100%, making the game an exciting one to watch. Well done to all players.

Final Score: Nil all  
Coaches Award: Nat Curtin

### CAKE STALL:

A big thank you to all those who contributed to the cake stall held last Thursday. A special thank you to Les Oliver who donated many of his potted chrysanthemums. We raised over \$500.

Our three raffle winners were:

### Necklace, earrings and wine:

Donated by Nadene Owen & Nola Frost  
Won by Terry Gladish (well done Lenore)

### Nutrimetics:

Donated by Nadene Owen  
Won by Sandra Richter

### Potted Rose:

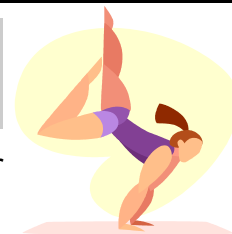
Donated by Julie Bushby  
Won by - unavailable at time of printing

Next weeks game is in Lake Grace against Hyden/Karlgarin at 10:00am. Please be at the field by 9:30am.

***All supporters are most welcome.***

*Genni Curtin*

# LAKE GRACE GYM CLUB



## Busy Bee

Gym Club coaches and committee and all gymnasts would like to thank very much all of those wonderful parents and friends who came along to our busy bee last week. It was a very successful day, with our equipment all unpacked and dusted off ready for our first session.

## Have-a-Go Day

Our first session of gym was held this week, Wednesday May 5th, and a big welcome to everyone who attended, especially the gymnasts. We hope you will all enjoy gym this year.

Many thanks to our coaches Christine, Wendy and Karen for providing a fun and stimulating first session, and to Jeni, Julie and Trish, our regular helpers, who helped kick off the season.

If you did not attend the "Have a Go" day and would still like to try gym, you will get a free try-out day before you have to pay, so new gymnasts are still welcome!

## Registrations

Many thanks to those who have already paid their registrations. A reminder that *registrations must be paid before your child takes part in any further sessions.* This is a requirement of our insurer. Any children arriving for gym next week, Wednesday May 12th, who have not paid registrations will be sent away.

## Uniforms

New uniforms are being designed for the boys this year, so watch this space. Leotards are available for girls to hire at a cost of \$10 per year. If you still have your hired leotard from last year you will be required to pay hire on it again this year. Please hand in any leotards no longer required to receive your bond back. Please see our treasurer, Michelle Slarke, with any leotard enquiries.

## Rosters

Parents will be rostered to help either with set-up (1.15-2.00pm) or the main session cleanup (3.30-5.00pm). Please advise Donna Hendry

if you are not available for roster.

The first roster will be made up this week and sent home with children from school. Please watch the Lakes Link, the School Newsletter and hand-outs of the roster so that you do not miss your turn.

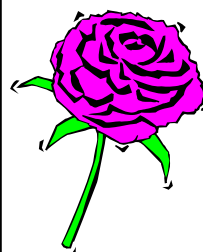
## Session Time

Gym days for the next two weeks are Wednesdays, May 12th and May 19th.

Kindergym, for ages 3-Kindergarten, is held at 2.00pm, and General Gym for ages 5 and older is held from 3.30– 4.45pm. *All Kindergym parents must attend to assist the coach with the session.*

*We look forward to seeing you all there!*

Donna Hendry (secretary)



## MOTHERS' DAY IS JUST AROUND THE CORNER

**A NEW RANGE OF POTS  
LOTS OF SHAPES AND COLOURS**

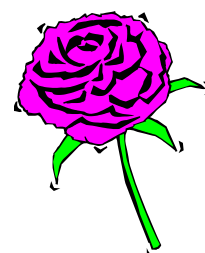
**BIRD BATHS AND FIGURINES**

**FRESH SEEDLINGS AND PLANTS**

**PLUS EVERYTHING NEEDED FOR  
THE GARDEN**

## LAYBY WELCOME

CCL Hardware  
Garden Centre  
8 Stubbs St  
LAKE GRACE  
Ph - 98651104  
Fax - 98651121





# LAKE GRACE RIDING SCHOOL 2004



Sheridan Fyfe and Bobby taking part in the lolly race.



Sheridan Fyfe on Bobby and Thomas Dunham on Surf



Shenae Prater assists Aaron Dunham and Nicky as they participate in the lolly race.



Aaron Dunham on Nicky



Jade Cameron taking part in the lolly race.





# LAKE GRACE GOLF CLUB

With the fair weather continuing a small field played a 4BBB Stableford for the Sand 'N' Salt and Spencer Wool Trophies on 24th April. Thank you to Tania and Darren for their ongoing support.

Kevin Eggers, continuing his fine form from the previous week, and his partner, Craig Reeves, won the day on 48 points.

Winners for the ladies were Betty Scheid and Lisa Pearce on 40 points.

Nearest the pins were Martin Nice (4), Lisa Pearce (6), Kevin Eggers (15) and Lisa Pearce (18).

We would like to welcome Lisa Pearce to our golf club. It's always nice to see new faces.

Yet more sunshine saw another small field roll up on 1st May for the first Qualifying Round. All anxious to get in a good score. Thank you to Peter and Michelle Lay from Peter Lay Haulage for sponsoring the day.

It was a very chirpy Marcus Owen who took out line honours with a score of 93-27-66, apparently his first win all on his own. Well done Marcus! Gary Frost was a close second with a score of 68-11-67.

Lisa Pearce was also a winner on the day with a score of 104-36-68, followed by Jenny Bidwell 94-20-74. It is rumoured that the handicapper will be visiting Lisa.

Other good scores were Craig Reeves with 81-13-68 and Michelle Lay on 103-28-75.

Nearest the pins were Craig Reeves (4), Gary Frost (6), Jenny Bidwell (15) and Craig Reeves (18).

Ladies longest drive on number 3 was by Helen Hunt, while Craig Reeves took out longest drive for the men on number 11.

Welcome to Mark Pearce who came out and played the day. Lisa brought him to carry all the prizes out to the car.

Saturday, 8th May, will be a stableford. Sponsor of the day is Lake Grace Roadhouse. For Saturday, 15th May, SBM Tyres & Mechanical are sponsoring a Foursomes (arrange own partners). Don't fret if you can't arrange partners as this can be sorted on the day.

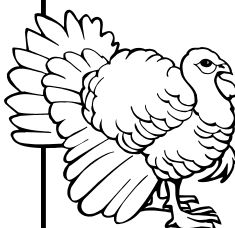
For those ladies wanting to get in some extra rounds of golf don't forget the Harrismith Ladies Open Day on Thursday 20th May.

Usual starting time is 12:30pm with names in by 12:15pm, so get your earthmoving gear organised and come out for a round.

*Craig Reeves*

## Feel Like Turkey??

**Be in it to win it!  
Come out and play Turkey  
Day at the Lake Grace  
Golf Club on  
19th June**



If you don't play like one there's a fair chance you could win one!  
If you have any queries ring  
Craig Reeves on 9865 1310

## JUNIOR GOLF

Junior golf in Lake Grace commenced its season on Sunday, 2nd May, under ideal autumn conditions.

We would like to take this opportunity to welcome two new golfers to our Junior ranks in Ashley Morton and Ross Young. We are sure your time with us, however long, will be enjoyable and informative.

If the form shown at last week's session is any

indication to go by, the season ahead looks very bright indeed.

If you are thinking of playing Junior golf, sticks are available at the club. Our coaching sessions commence at 10:00 am every Sunday morning at the Lake Grace Golf Course. It costs only \$5.00 to join. Hope to see you there.

*Gary Frost*

# WINTER SPORTS – OFA

Saturday May 1st

## League

Kent 25 goals 15 (165) defeated Lake Grace/Pingrup 5 goals 9 (39).

Best: S McWhirter, G Watson, R Bennett

Goal Scorers: R Bates 1, D Pelham 1.

*Boxwood Hills 32 goals 22 (214) defeated*

*Newdegate 4 goals 2 (26).*

*Ongerup 16 goals 8 (104) defeated Borden 9 goals 12 (66).*

*Jerramungup 14 goals 12 (96) defeated*

*Gnowangerup 5 goals 8 (38).*

## Reserves

Lake Grace/Pingrup 7 goals 8 (50) defeated Kent 5 goals 10 (40).

*Boxwood Hills 14 goals 10 (94) defeated*

*Newdegate 1 goals 0 (6).*

*Ongerup 15 goals 12 (102) defeated Borden 5 goals 1 (31).*

*Jerramungup 9 goals 18 (72) defeated*

*Gnowangerup 3 goals 4 (22).*

## Juniors

Lake Grace/Pingrup 15 goals 7 (97) defeated Kent 2 goals 1 (13).

*Newdegate 10 goals 7 (67) defeated Boxwood Hills 3 goals 6 (24).*

*Ongerup 9 goals 13 (67) defeated Borden 3 goals 2 (20).*

*Jerramungup 4 goals 6 (30) defeated Gnowangerup 4 goals 1 (25).*

## Paper & Card



Many colours in A4 and A3  
We also have metallics  
and Leathergrains  
Priced from 5 cents per sheet  
**At the Lake Grace  
Telecentre**

LAKE GRACE HOCKEY CLUB INC.

# UNDER THE SEA FANCY DRESS

SATURDAY 8TH MAY

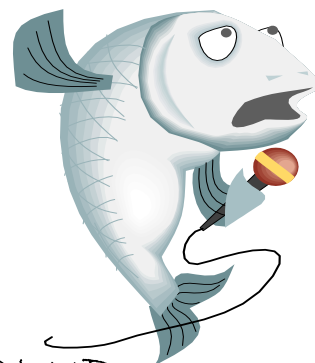
LIVE 5 Pce BAND

'THE LAST STAND'

LAKE GRACE SPORTSMAN'S CLUB

6.30 PM

\$30.00 PER PERSON



Tickets available from the Hockey Girls or Lake Grace Health & Beauty

# CLASSIFIEDS

## PUBLIC NOTICES

### Lake Grace Recreation Council AGM

As there were no nominations for President  
the AGM has been rescheduled for  
Thursday 13th May  
7:00pm  
at the Pavilion  
*Each affiliated club must send two delegates  
or they will be fined*

### Lake Grace Development Assoc

Subscriptions are now due  
(\$5 for individuals and \$11 for groups)  
Please pay Mark Burbridge, Treasurer

Lake Grace Community Library, Resource  
and Telecentre are looking for a  
**community representative**  
for the building management committee.  
The Community Representative will provide  
an outside perspective of what could be  
done to improve our facility.

**The AGM will be held**  
**Thursday 20th May**  
**11:00 am**  
**Seminar Room at Telecentre**

### St John Ambulance Lake Grace AGM

Thursday 27th May  
7:30 pm  
At the Sub Centre

## LOST

### Dressmakers Mannequin

If you have borrowed this from me can you  
please return it as I can't remember to whom  
I loaned it.  
I need it urgently. Thank You.  
Tania Spencer - 9865 1339

### First Aid Classes

Will commence on Saturday 15th May and  
finish the following Saturday 22nd May.  
Start at 8:30 am  
At the Sub Centre

## AVAILABLE

### Western Windmills

*Servicing your area*  
*For all you windmill needs*  
Tel: 9824 1111; 0408 413 290

## FOR SALE

### Queen Size Waterbed

In excellent condition with  
four bladder mattress  
\$400.00  
Tel: 9864 9029; Fax 9864 9129

### Double Horse Float

Good Condition  
Call Carly on 9865 1993

### 1990 EA Falcon S Pack

Multi Point Fuel Injection  
Licensed until 08/2004  
Good condition. Good tyres.  
For more information call  
9865 1291 all hours

### 98 Rodeo Crewcab 4x4

VGC - licensed until August 2004  
**Used as family car only**  
Bull bar, tow bar, canopy  
Wide wheels and tyres, Power steering  
\$19,750 ono  
Contact Marcus or Nadene on 9865 1617  
or mob 0429 651 617

## Lake Grace Shire Councillors

Councillor	Telephone	Fax
Darcy Roberts (President)	9874 4013	9874 4068
Andrew Walker (Vice President)	9865 1241	9865 1921
Ian Woods	9872 0011	9872 0050
Royce Taylor	9865 1507	9865 1320
Helen Bennett	9865 1026	9865 1568
Ollie Farrelly	9865 1304	9865 1188
Allan Lansdell	9874 4033	9874 4033
Meighan Stewart	9871 2042	9871 2042

## ANGLICAN CHURCH OF LAKE GRACE

### Sunday 9th may

10:30 am AGM to follow

### Sunday 16th May

9:00 am Lake Grace

5:30 pm Pingaring

### Enquiries:

Captain Derek McArtney 9865 1064  
Deacon Michael Lloyd 9871 2041

## CRISIS CARE NUMBERS

Doctor's Surgery	9865 1208
Hospital	9865 1206
Ambulance	9865 1444
Police Station	9865 1007
Fire Brigade	9865 1250
Emergency Services	000
Electricity Faults	13 13 51
Water Faults	13 13 75
Directory Assistance	12455
Crisis Care Unit	9325 1111
Women's Refuge Group	9227 1642
Family Violence Intervention Programme	9336 2144
ACRAH Men's Refuge	9272 1333
Domestic Violence Legal Aid Unit	9328 7602
Family Court of WA	9224 8222
Youth Legal Service	9227 4140
Citizens' Advice Bureau	9221 5711
Samaritan Befrienders	1800 198 313
Helen Byles-Drage	9865 1014
Poisons Information	13 11 26
Kids' Helpline	1800 073 008
Seniors' Information	1800 199 087
Family Helpline	1800 643 000
Southern AgCare Counselling	
Sat - Mon	9844 1459
Tues - Fri (Evenings)	0427 441459

## Lake Grace Uniting Church

### Sunday 9th May

10:00 am

### Sunday 16th May

10:00 am

### Enquiries:

Keith and Joan Fleming 9871 9025  
Bob Burbridge 9865 4020

## LAKE GRACE CATHOLIC CHURCH

Mass Time-Table

### Saturday 8th May

Pingrup 6:00 pm

### Sunday 9th May

Lake Grace 8:00 am

### Sunday 16th May

Lake Grace 6:00 pm

Inquires: phone 9865 1248

Ambition never gets  
anywhere until it forms a  
partnership with work.

*Anonymous*

## Justices of the Peace

Mr Neil Bishop	ph 9865 1632
Mr Colin Connolly	ph 9865 1010
Mr Ron Dewson	ph 9865 1224
Mrs Shirley Duckworth	ph 9865 1189
Mr Len Elliott	ph 9865 1137
Mr Lynn Parker	ph 9865 1217 (wk)
Mr Peter Taylor	ph 9864 9026
Darcy Roberts	ph 9874 4013

# COMMUNITY CALENDAR

## May

Fri 7	Fish & Chip Night - LG Sports Club CWA Street Stall Dress Red for Heart Week	Sat 15	Golf - Foursomes (arrange partners) Hockey - Kukerin v Lake Grace Winter Sports— LG/P v Ongerup Steak Night - LG Sports Club
Sat 8	Steak Night - LG Sports Club Hockey - LG v Karlgarin/Hyden Golf - Stableford Hockey Dinner Winter Sports—Jerramungup v LG/P	Sun 16	Junior Golf - 10:00 am
Sun 9	MOTHERS' DAY Junior Golf - 10:00 am	Mon 17	LLN Deadline Yoga - CWA - 6:00pm Men's Darts LGDHS P&C Meeting
Mon 10	Men's Darts LG Development Assoc Meeting	Wed 19	Pizza Night at Rosies (take-away) Hockey Training Ladies Darts
Wed 12	Pizza Night at Rosies (take-away) Hockey Training Ladies Darts	Thur 20	Lakes Link News Playgroup - 9:30 am Library/Telecentre Building AGM
Thur 13	Playgroup - 9:30 am Card Making - CWA - 9:00am LG Recreation Council AGM	<b>Coming Events:</b> 28th May - Card Making — CWA – 9:30am 11th June - Quiz Night—LG Sportsman's Club	
Fri 14	Fish & Chip Night - LG Sports Club		

# SPENCER WOOLS

## Agent for WESTCOAST WOOLS Pty Ltd

For all your wool selling needs...

**Clips on consignment – thru Auction or Private  
Nett Price on Farm      Forward Selling Options**

**Oddments – On Spot Payments**

**Tel: DARREN SPENCER – 9865 1339 or 0428 651 339**