

# LAKE GRACE LINK NEWS

Produced at the  
LAKE GRACE COMMUNITY RESOURCE CENTRE  
School Place  
PO Box 177 Lake Grace WA 6353  
Ph (08) 9865 1470 Fax (08) 9865 1471  
Email: lakegrace@crc.net.au  
ABN: 19 498 730 152  
Website: www.lakegrace.crc.net.au

12th February 2015

\$1.20 inc GST

Vol 21 Issue 2

## Parents & Citizens Needs You

Suzanne Reeves



**Above: Current P&C President Vynka Lay with P&C Secretary Shelley Stanton.**

With approximately 60 families having children enrolled at Lake Grace District High School it should be easy to fill voluntary positions within the P&C Committee. Alas it couldn't be further from the truth. In 2014 the P&C had 11 financial members; cost isn't a factor as members only have to contribute \$1 to be covered for the 12 months.

So what spooks people from becoming involved in a group that centres on their children? Is it fear of not being able to meet the criteria of a position? Perhaps you don't feel comfortable with maths therefore feel the Treasurer's role isn't for you. Perhaps you don't feel comfortable with words

therefore assume the Secretary's position would be beyond your capabilities. With the help that is available for organisations and their volunteers from Peak Bodies or content that can be downloaded from the internet these mild discomforts and feelings of inadequacy should be a thing of the past.

In the interests of helping their volunteers Lake Grace District High School's P&C has organised a training opportunity for Thursday 19<sup>th</sup> February. WACSSO, also known as the Western Australian Council of State School Organisations Inc. will be providing a 2.5 hour session that covers

*Continued page 26*

# CONTENTS

Page 1,26	Parents & Citizens Needs You
Page 4	Kit Surfers; Wedding Belles
Page 5	About Town
Page 7,34	Eulogy - Geoff Morgan
Page 9	Thank You Fireys
Page 10	Farm Business Seminar
Page 11	Bits & Pieces
Page 12,13	LGDHS Pages
Page 14,15	Landcare
Page 17	Health Page
Page 18	Claiming Website Development Costs
Page 19-22	Shire Pages

Page 24	Puzzle Page
Page 25	Harvest is Over
Page 27	Country Music Festival
Page 28	Macrofertile
Page 35	Liveliighter Campaign
Page 36	Cricket Notes
Page 38	Classifieds
Page 39	Town Information
Page 40	Calendar

## LAKES LINK NEWS 2015 Advertising Rates

	Non Profit Org	Members	Non Members
Classified	FREE	FREE	\$1 per line
Public Notice	FREE	N/A	N/A
1/8 page	FREE	FREE	\$12.50
1/4 Page	\$12.50	\$15.00	\$17.50
1/2 Page	\$20.00	\$25.00	\$30.00
Full Page	\$35.00	\$45.00	\$55.00
Insert (d/s)	\$30.00	\$30.00	\$40.00
Thank You's	FREE	FREE	FREE
Editorial	FREE	FREE	FREE
Colour	\$150.00	\$150.00	\$160.00
Conditions do apply.			

**CRC Opening Hours**  
9:00am - 5pm  
Closed from midday to  
1pm for lunch.

## Deadlines & Editions

All articles, news & advertisements are to be submitted to the Lake Grace Community Resource Centre by 3pm on Monday of paper week.

**Next Deadline**  
Monday 23rd February

**Next Edition**  
Thursday 26th February



# Thanks

To the **very** dedicated team who have volunteered their time to this edition of the Lakes Link News.

Dick Phillips

Gwen Oliver

Elsie Bishop

Thank you also to our many contributors of articles.

### DISCLAIMER

- 1) No liability shall be incurred by the Lakes Link News by reason of any amendments to, or error or inaccuracy in, or the partial or total omission of an advertisement or by reason of delay or default or from any other cause whatsoever. If in the opinion of Lakes Link News the error clearly reduces the value of the advertisement and the advertiser notifies it to Lakes Link News within seven days of the publication date, then one correct insertion will be made without charge.
- 2) While the Lakes Link News aims to publish all material submitted, Lakes Link News reserves the right to refuse to publish or re-publish any contribution or advertisement without giving any reason.
- 3) No articles, letters or advertisements will be accepted which may appear to be defamatory or accusatory, or to favour one side in a legal dispute.
- 4) Lakes Link News reserves the right to shorten or otherwise amend any contribution other than advertisements.
- 5) The opinions, views and beliefs expressed in articles and other submissions to the Lakes Link News do not necessarily reflect the opinions, views or beliefs of the CRC staff or Committee.

***350 copies printed and sold each fortnight***

# Editorial

- Don't forget that two of our National Party representatives Martin Aldridge MLC and Paul Brown MLC are in Lake Grace on Friday 13th (hope that's not an omen) February. They will be in the CRC seminar room between 1pm and 2pm, if you have anything you would like to discuss then drop in. More information on page 11.
- The CRC has secured Wagin author Megan Henry to come to Lake Grace on Friday 1st May to talk about her book 'Always on My Mind'. Megan will be travelling to Newdegate in the morning and coming to Lake Grace in the afternoon. More details as we get closer to the date.
- Paul Leoni is a Landcare officer in the Kent Shire and is keen to meet more farmers in the Lake Grace Shire. We've invited him to attend the CRC on Tuesday 10th March for an informal afternoon tea. This is an ideal opportunity for landholders to find out what is available out there in the way of funding for tree planting etc.
- The CRC will also be hosting a workshop with local sporting and community groups (sponsored by DSR) looking at 'What Makes a Happy Club'. We

hope to have Caroline Robinson facilitating. The workshop will be held in March, by the next paper we should have a date locked in place. At a time when all groups are struggling to maintain member levels and volunteer enthusiasm this workshop could be the tool that your club needs. The Department of Sport and Recreation's objective from this workshop is that sporting clubs will be able to get one-on-one assistance from Caroline in setting up procedures and guidelines for their club.

- All volunteers need back up and guidance. The P&C are hosting a workshop this coming Thursday at the CRC; this is a golden opportunity for everyone who has school age children and is involved with the P&C. Anything that you learn at this workshop will be helpful with anything that you do in other clubs and groups; so please support the P&C and attend.
- A few weeks ago I received an email with an opportunity to purchase 'Thank You Fireys' red balloons to celebrate National Red Balloon Day on the 28th February (see page 9). I thought what a nice gesture, fireys do a terrific job and it would be great to recognise all of the hard work that they do! So we bought 500. Then the fires in Northcliffe and Boddington started. Every Lakes Link this fortnight has got a red balloon in it (unless you dropped it on your way out of the Plaza) so in recognition of the commitment that our fire brigades undertake (and those that support them), blow the balloon up and tie it to your front fence.
- I haven't scheduled any computer courses at the moment but for anyone who is wanting some tuition we're happy to give one-on-one. Contact the CRC and organise a time.

Suzanne Reeves

## Westlink Programme

### CEDA Presentation - Dr Ryan Reynolds

It is amazing how the human spirit can overcome adversity. Hear this inspirational address from Dr Ryan Reynolds on how the community rebuilt the social amenity in Christchurch New Zealand after their devastating earthquakes.

Feb 18 - 1:30pm, 8:30pm. Feb 19 - 11:00am, 5:30pm.  
Feb 25 - 11:10am, 5:40pm. Feb 26 - 1:40pm, 8:40pm.

### KAB Tidy Towns Awards 2014 - Dr Erica Smyth

"Bringing communities with you". Delivered at this years Tidy Towns awards, Erica discusses how to involve others in your projects. She explains that creating a positive community culture takes effort and needs people working together. A very informative talk that will get you thinking on how you can apply it to your community.

Feb 18 - 11:00am, 8:34pm. Feb 19 - 1:30pm, 8:30pm.  
Feb 25 - 1:40pm, 8:40pm. Feb 26 - 11:10am, 5:40pm.

### Ngala

*Conversations about sleep. Complete session covering ages 0 - Daycare.* Developmental information and helpful hints to help you and your child get better sleep. Daily in February at 6:00pm.

Westlink is available on your home TV, if you would like to watch at the CRC then please call us on 9865 1470 to arrange.

## Len Elliott

The Lake Grace Community Men's Shed send their deepest sympathies to the Elliott families. Len was a regular at our Men's Shed days arriving on his gopher LG24 to take up his spot at the head of the table. He had a wealth of knowledge and humour that he shared with us. Len will be greatly missed by all the guys at the Men's Shed.



## Kite surfers on Lake Grace

Christmas Day 2014 saw 4 keen kite surfers take their skills to Lake Grace for the first known Kitesurf across Lake Grace. The harvest rains last year provided some water into the cemetery lake and even though it has dried up now, it was deep enough (30cm) for kite surfing back then.

The adventurous foursome were the Curtin brothers - John, Nat, Sam and Paul. This was a one off opportunity while there was still water in the lake. It was fortunate they are all good kite surfers as one brother

unlucky enough to fall off found out when he came out a little bit darker and smellier for his experience.

It was a wonderful sight to see the kites in action against the setting sun. The thousands and thousands of bird life didn't think so as their evening roosting was disturbed but they added to the experience as they flew in Mexican waves across the Lake.

The next time it floods in Lake Grace the lake will prove to be a great attraction for kite surfing when it is too windy for skiing.



*Above: Kite surfers Nat, Sam, Paul and John Curtin*



*Above: And this is how you do it!*

## Wedding Belles



Thank you to Nanette Wallace for providing us with these lovely photos from Rhiannon and John Carmody's wedding.

*Right: John and Rhiannon Carmody*

*Left: Rhiannon Carmody with her attendants (clockwise)*

*Caitlyn Beggs, Maid of Honour  
Miranda Wallace,  
Lauren Bushby  
and Lisa Clarke.*



## What's Happening?

- With all those babies in the last fortnight one slipped through the wicket keeper. Well done to Dion Wallace and Tahlia Dowsett on the arrival of their baby boy, Jett Alexander Wallace. Jett arrived on 12th January and weighed in at 7lb 13oz.
- Determined not to be rushed Mirella Ann Jones arrived 9 days after her expected due date on the 2nd February. Mirella is the latest addition to Amy and Richard Jones family with Isaac and Trelise thrilled to have a little sister. Mirella weighed in at 7lb 7oz and was 53cm long. She makes her first Lakes Link appearance as per below, photo courtesy of Vixen Photographics.



- Sincere sympathy to Lenore, Wendy, Glenda and Lois and their families on the loss of their father, father-in-law, grandfather and great grandfather, Len Elliott. Mr Elliott passed away on Wednesday 4th February and will be missed by his family and friends.
- Condolences also to the Hendry family following the passing of John Hendry (snr) on Tuesday 3rd February. Our thoughts are with Catherine, Dorothy, John, Catherine, William and families.
- Congratulations to Kimberley and Stephen Chappell on the arrival of a daughter, there will be more information in the next Links.

## Happy Birthday



12th February	Holly Watkinson
13th February	Lucas Robinson
15th February	Michaela Stoffberg
	Fiona Palmer
17th February	Nicole Argent
	Heath Lewis
19th February	Helen Bennett
21st February	Kaitlyn O'Neill
22nd February	Ray Bushby
	Mitchell Gooding
23rd February	Dean Giles
24th February	Nicholas Dunham
	Colin Connolly
25th February	Anne Franks
	Mitchell Smith
	Michelle Lay
26th February	Geoff Desmond

## Anniversaries



14th February	Amanda & Chris Trevenen
17th February	Elsie & Neil Bishop
19th February	Helen & Steve Hunt
21st February	Sandy & Dennis Gittos
26th February	Jean & Kevin Seaman

**Brayden Reynolds and I would like to thank the following local business' and people for their support leading up to our Wedding Day, your help, patience and support is very much appreciated and make us proud to be a part of a wonderful community!!!**

- ☺ Mrs G's Catering Services
- ☺ Shire of Lake Grace - in particular D Stubberfield
- ☺ DJ Robbo
- ☺ Brian and Christine Kimber
- ☺ Lake Grace Sportsman's Club
- ☺ Lake Grace Hotel Motel
- ☺ Salt Bush Inn
- ☺ CCL Hardware and Building Supplies
- ☺ Lake Grace Meat Supplies - Dean Sounness
- ☺ Lake Grace Cricket Club
- ☺ Lakeway Hair Salon
- ☺ Walkers' Hill Vineyard
- ☺ Danielle Robertson
- ☺ Mr T Gladish @ Australia Post
- ☺ Tameka Roukens
- ☺ VISH'S Fish n Chips

**Thank you  
Rebecca Reynolds (Leigh)**



# Lake Grace Weather

- Terry Gladish



## February Extremes

Highest Max Temperature	46.1	03/02/2007
Lowest Max Temperature	16.4	20/02/1991
Highest Min Temperature	26.4	03/02/1997
Lowest Min Temperature	7.3	23/02/1967

Date	Min	Max	Rain
28/01	22.2	38.8	
29/01	19.4	35.5	
30/01	18.6	33.0	
31/01	15.1	29.1	
1/02	15.3	29.1	
2/02	18.8	33.9	
3/02	19.4	36.1	
4/02	21.8	38.8	1.0
5/02	21.2	38.8	
6/02	17.7	30.4	
7/02	15.7	28.0	
8/02	16.8	41.6	
9/02	21.5	40.2	
10/02	16.5	36.7	
11/02	17.9		

## Annual Community Survey

Fancy winning a NEW sensor camera kit or iPad mini?  
Want to extend your environmental book library?

Take part in Wheatbelt NRM's upcoming Annual Community Survey and ...

**you could be a winner!**

Local Community Resource Centres (CRC) will be helping us talk to farmers, land managers and residents about current environmental issues.

This will help us assess the effectiveness of natural resource management in the Wheatbelt and find out more about your environmental priorities.

Complete the survey with your local CRC to go into the draw to win one of three prizes – a sensor camera kit, an iPad mini, or a package of quality books. All participants will receive a packet of everlasting daisy seeds.

\*Survey will take place mid-February to mid-March 2015. Survey to be conducted in accordance with Australian Privacy Principles. Summary of results will be also available from Wheatbelt NRM.

[www.wheatbeltnrm.org.au](http://www.wheatbeltnrm.org.au)



Australian Government

This project is supported by Wheatbelt NRM, through funding from the Australian Government.



wheatbelt  
natural resource  
management

ph: (08) 9670 3100  
info@wheatbeltnrm.org.au



# Geoffrey Keith Morgan

29/07/1953 - 28/12/2014

*Eulogy written and read by friend Shirley Bevan.*

Geoff was born on the 29th July 1953 in Beverley to parents Keith & Ellen the eldest of 5 children, Big brother to Lynton, Joan, Lynda-Maree and Dennise.

Apparently he was a little sod at school and was always flirting with the girls. He may not have been described as the most academic student but this did not stop him from achieving in woodwork, metalwork and tech drawing.

At the age of 15 he started an apprenticeship in carpentry working under Johnny Westorp & Cornelius Hart in Katanning. Learning his trade set him up to become the master tradesman that he was. He married Beryle and worked hard bringing up a young family in various places being Katanning, Mt Barker, and Lake Grace and finally settling in Busselton.

Geoff was an 'ideas man'. He always came up with good ideas to fix or make things. His brother, Lynton worked with him on many occasions and he says that "when I worked with my big brother everything was achievable. Working in Lake Grace, we lifted 13m roof sheets onto a 6m high shed roof by hand, just the two of us, hard work, but with the careful application of a few of Geoff's good ideas, the job was achievable."

The Volunteer Fire Brigade became a large part of Geoff's life. He could always fix their machinery even if it seemed unfixable. Geoff made a machine to measure reaction time and flow rates for the brigade competitions. However, he didn't apply this technique to his coffee cup which sat in the ute or on a bench until it went cold, but he would still drink it. He also made a 'jigger' up to make plastic washers for the brigades hose attachments-an ideas man.

Lynton remembers the day Geoff walked into Coles and fell instantly in love with his first pair of green and white Double Pluggers to use as his safety boots; he then purchased a pair of black and white ones for his going out pair. Thongs for those who don't know double pluggers.

Lynton also tells us a few years back, Geoff fell off a roof and while in recovery obtained a walking frame with wheels he reminded him of Davros - only scarier.

As for Ken and I, we first met Geoff in 1990 when we bought a ceramic tile business in the main street opposite Ross Denney's Mensland. We used to see a grey Holden one tonner going past the shop looking like it was being driven by a funny floppy hat. Little did we know that the person under the hat would become one of our best friends and the most gifted tradesman we would ever know. Ken nicknamed him grommet but after seeing his LG number plates that name became Little Grommet.



**Above. Geoff Morgan at the Lake Grace Volunteer Fire Brigade 40th anniversary celebrations. Photo Jayne Argent.**

A few years later we decided to go on a camping trip to Hamelin Bay for Easter, so Geoff, Ken and Bob Charles loaded the vehicles up and left on Thursday to set up camp. They had tents, tarps, trestles, firewood, fishing and more stuff than a Bunnings store. Now next to our camp site were two old blokes in caravans who stood and watched our camp take shape and when they thought the men had finished, one turned to the other and said 'they brought everything but the kitchen sink.

Now Morgs heard this and very casually walked over to the one tonner and produced a full size stainless steel sink and set it up on the trestles. That was Morgs, Always did it better. Two and a half years ago Geoff married Coco. He was so happy. He was working with Ken about six months after his marriage and told him he was the happiest he had ever been in his life.

Geoff, husband, father, brother, friend and mate, we will never understand "WHY".

*The following is from Nick Maalouf*

Geoff Morgan you will be forgiven but not forgotten, you left unforgettable impressions on everyones life.

Should I be asked how to describe Geoff Morgan my reply would be 'Geoff is an honest, hard working man and above all Geoff is very likeable.

*Continued page 34*



# THANK YOU

*We all had a great 2014!*

Let's help you, our guest, to celebrate 2015!

**We invite you to make an offer**

**We want you to enjoy your buying experience**

## IN STOCK TODAY

**Prado GXL, auto, Metal Storm**

**Landcruiser 200 GXL, Graphite, auto**

**Landcruiser 200 VX, auto, Silver Pearl**

**Landcruiser 200 VX, auto, Crystal Pearl**

**Landcruiser 200 GX, auto, white**

**Hilux SR Dual Cab, manual, Graphite**

**Hilux SR Dual Cab Tray, manual, blue**

**SR5's—automatics & manuals**

**Landcruiser Dual Cabs—6 in stock**

**Landcruiser Single Cabs in stock**

## Call Wes now 0417 612 287



### Great Southern Toyota

PH 98217100 or After Hours ring SALES MANAGER Wes 0417612287 ANYTIME  
[www.greatsoutherntoyota.com.au](http://www.greatsoutherntoyota.com.au) or email [wes.bond@greatsoutherntoyota.com.au](mailto:wes.bond@greatsoutherntoyota.com.au)



**TOYOTA**

**A RURAL DEALER FOR RURAL PEOPLE—"YOU RING WE BRING"—WE DELIVER TO YOU**

158 CLIVE ST KATANNING WA 6317 DL15270



# Thank You Fireys! National Red Balloon Day

## Media Release

Not only has Australia's extreme summer conditions hit us hard, but so has our bush fire season!

Right across our great country, our heroic fire fighters are out battling fires, putting their lives on the line to save ours and our properties.

Many of these fire fighters are away from their families for days on end, sometimes longer to keep our families and communities safe. They leave loved ones at home hoping that these brave men and women will return to them safely.

National Red Balloon Day is a 100% charity organisation, which was founded in January 2014, as a way for all Australians to give praise and thanks to our nation's fire fighters. Our first THANK YOU FIREYS day was a huge success on 28th February 2014.

On the 28th February 2015, we aim to be much bigger and have more of the Australian public show their support to our courageous men and women by flying a red balloon from their mailbox, fence, workplace etc as a simple measure to say 'Thank you Fireys'. A simple measure to show our support and appreciation for their tireless efforts.

Together with the sale of 'Thank You Fireys' Red Balloons, and other merchandise which is available through our website, [www.nationalredballoonday.org](http://www.nationalredballoonday.org), we hope to not only thank our fire fighting heroes, but to assist in raising funds. All profits from this fund raising event will go directly back to the state from which the item/s is purchased. You can also donate directly through our website.

Fire Services from each state and territory of Australia have been contacted in order to establish a fund raising partnership, either with their service or a nominated charity of their choice.

## National Red Balloon Day

Saturday 28th  
February



### GOT ODDMENTS ON FARM?

Spencer Wools is looking to purchase all your oddments currently on farm.

Let us give you a price and clean your shed up.

West Coast Wools are offering their brokering services.

Clips on Consignment.

Fast Testing - 72 hr turnaround from delivery.

Can Organise Delivery to Katanning or Bibra Lake.

To arrange an appointment please contact

Stephen Chappell

0427 651 338 or

Darren Spencer

0428 651 339



## OBORNE CONCRETE



Chemical Sheds \* Boomspray Pads  
House Pads \* Silo Pads \* Driveways  
Super Sheds \* Workshops

Tip truck and bobcat also available for any type of site works.

Small and Large Loads

Grant Osborne - Lake Grace

Ph/fax: (08) 9865 1367

Mobile: 0427 651 367

## Farm Support Measures the Focus of New Seminar Series

### Media Release

A series of free seminars offering information on support measures available to Western Australian farm businesses is set to begin this month.

The seminars will run in eight locations across the agricultural region, providing detailed information about the assistance available.

It is a combined delivery by the Rural Business Development Corporation, Rural Financial Counselling Service WA, Regional Men's Health Initiative and the Australian Department of Human Services.

Department of Agriculture and Food, Western Australia project manager Jason Moynihan said the upcoming seminar series followed similar workshops run successfully in parts of the wheatbelt and pastoral areas last year.

"There are a range of schemes and support measures available, and it can be a challenge for farm business owners or managers to know the extent of what is on offer and what is relevant to them," Mr Moynihan said.

"These workshops bring several providers together in one place, to provide a 'one-stop-shop' for farm

businesses keen to find out more about support measures available to them.

"These range from concessional loans, financial counselling, health and wellbeing, and household allowance payments."

The Rural Business Development Corporation (RBDC) will provide details on the Australian Government's *Farm Finance* and Drought Concessional Loans Schemes which will assist participants to determine whether the schemes are applicable to them.

The RBDC will also outline grants under the State Government's Farm Business Assessment Scheme which are available to farm businesses in eligible shires.

The Rural Financial Counselling Service WA will present information on helping people and businesses through tough times and the Regional Men's Health Initiative will outline its activities to support health and wellbeing.

The Department of Human Services will provide an overview of the Farm Household Allowance payment.

For further information on the seminars, please phone the RBDC on freecall 1800 198 231 or email [rbdul.loans@agric.wa.gov.au](mailto:rbdul.loans@agric.wa.gov.au)

### Seminars being held in region are:

#### Katanning

Wednesday 18 February, 10am-12pm  
Katanning Community Resource Centre  
16 Albion Street

#### Newdegate

Wednesday 18 February, 4-6pm  
Newdegate Community Resource Centre  
Collier Street

#### Bruce Rock

Thursday 19 February, 10am-12pm  
Bruce Rock Community Resource Centre  
40 Johnson Street

## Men's Shed Battery Drive

The Lake Grace Community Men's Shed is continuing with their battery drive. This is an ongoing revenue raising project which will contribute to the running of the Shed.

Batteries can be left at Phil Clarke's shed or you can contact Phil on 0427 651 155 or Allan Duckworth on 0427 651 567 if you require them to be picked up. Thank you for your ongoing support.



ABN: 72 616 138 172 EC: 010433

**Electrician Servicing Lake Grace,  
Newdegate, Pingrup, Varley and  
Surrounding Areas.**

**Phone Alistair on  
0427 339 472  
for a free quote.**

**Can now fit split system air  
conditioners so get ready for  
summer and give Alistair a call.**

Email: [alistair@tigersparkelectrical.com.au](mailto:alistair@tigersparkelectrical.com.au)

Website: [www.tigersparkelectrical.com.au](http://www.tigersparkelectrical.com.au)



## Bits & Pieces

School's back!!! It makes things seem a little more normal and gives mum a bit more time during school hours to sit and relax a bit. So instead of switching on the non event box (TV) here is something to get your mind functioning.

1. What are looser than normal in a double-jointed person?
2. What does the F.A. stand for in the English F.A.Cup?
3. What country's name is abbreviated to C.S.S.R.?
4. What year did man first land on the moon?
5. What is the largest city in Africa?
6. What Australian city has a harbour on Sullivan's Cove?
7. Who officially opened the Sydney Opera House in 1973?
8. Who was known as the 'Queen of Covent Garden'?
9. What is the hardest bone in the human body?
10. What are rats unable to do, making them extra vulnerable to poison?
11. What German city is famed for a scent it produces?
12. What are the three most spoken languages in Australia?
13. What does a notaphile collect?
14. Who won every mens freestyle event in the 1959 Australian Swimming Championships?
15. What's the square in the centre of Moscow called?
16. Who was the first non-human to win an Oscar?
17. Who was the first man to orbit the Earth?
18. What's the capital of East Germany?
19. How many colours in the rainbow?
20. What year saw television arrive in Australia?
21. What did the seven dwarfs do for a living?
22. What is Rubella better known as?
23. What sport boasted stars such as Bulldog Brower and Killer Kowalski?
24. Who was nicknamed 'The Little Corporal'?
25. What was the nickname of the Model 'T' Ford?

Answers on page 34.  
And lets finish off with a few funnies with a Scottish flavour.

An Englishman, a Scot and an Irishman were on the Titanic when she struck the iceberg. As she started to sink the purser shouted: "We are about to meet our maker. We'd better do something religious." The Englishman said a prayer, the Irishman sang a hymn. The Scot took up a collection.

In his later years Sandy began to be a little deaf but was too mean to buy a hearing aid. So he scrounged some thin wire and put one end in his top pocket and hooked the other end behind his ear. It made no difference to his deafness, but it prompted people to speak to him more loudly.

Jock walked into the fish shop and ordered two pieces of fish, two pickled onions, plenty of vinegar and salt,

"and wrap the lot up in today's newspaper."

McTavish had kept vigil beside his dying wife for two days. Finally he had to keep an appointment at the local inn. "I'll be away for a while," he said. "I'll be back as soon as I can, however if you feel yourself slipping away while I'm gone would you mind blowing out the candle."

Jock was walking down the street in his kilt when a curious woman asked if there was anything worn under the tartan. "Nothing's worn," he replied, "everything's in perfect working order."

The Scotsman gave the waiter a tip. It didn't even run a place.

The chaps in the bar invited Jock to a small bore shooting club. When he got there they stood him on a box and started firing at him.

When a Scottish millionaire in his eighties decided to marry an eighteen year old chorus girls the vicar protested. "I don't believe in marrying for money," he said. "Good," replied the millionaire, "then I won't insult you by offering you a fee for performing the ceremony."

Have you heard about the Scotsman who gave an Englishman, a Welshman and an Irishman ten pounds each? Neither has anyone else.



Lake Grace Pingrup

Junior Football Club

*'Where Dreams Begin'*



### Expressions of Interest

are sought for the positions of

- **D Grade Coach 2015**
- **Auskick Coach 2015**

Please contact President, Mark Pearce on 9864 9065 or Secretary, Missy Clifford on 0407 190 177 or via email to [missdazz@hotmail.com](mailto:missdazz@hotmail.com) for further information and applications.



# Lake Grace District High School News

## Concert Awards 2014

AWARD	RECIPIENT	AWARD	RECIPIENT
<b>Yr 1 Endeavour &amp; Encouragement</b>	Jaspar Marshall	<b>Yr 7 Endeavour &amp; Encouragement</b>	Charlee Earnshaw
<b>Yr 1 Excellence</b>	Tess Stanton	<b>Yr 7 Academic Excellence</b>	Kara Smith
<b>Yr 2 Endeavour &amp; Encouragement</b>	Luke Clifford	<b>Yr 7 Woodside Scitech Science Award <u>Female</u></b>	Hannah Clunie
<b>Yr 2 Excellence</b>	Michael Watson	<b>Yr 7 Woodside Scitech Science Award <u>Male</u></b>	Walker Zweck
<b>Yr 3 Endeavour &amp; Encouragement</b>	Jonty Robinson	<b>Yr 8 Endeavour &amp; Encouragement</b>	Sonny Poutu
<b>Yr 3 Excellence</b>	Ruby Stanton	<b>Yr 8 Academic Excellence</b>	Brad Clunie
<b>Yr 4 Endeavour &amp; Encouragement</b>	Romany Alexander	<b>Yr 9 Endeavour &amp; Encouragement</b>	Clayton Clunie
<b>Yr 4 Excellence</b>	Denica Stoffberg	<b>Yr 9 Academic Excellence</b>	Demi-Rae Major
<b>Yr 5 Endeavour &amp; Encouragement</b>	Mackenzie Palmer	<b>GENERAL SECONDARY AWARDS</b>	
<b>Yr 5 Excellence</b>	Emilee Eaton	<b>Citizenship</b>	Adam Hunt
<b>Yr 6 Endeavour &amp; Encouragement</b>	Georgia Garard	<b>Aust. Maths Comp.—Top Student in School</b>	Hannah Clunie
<b>Yr 6 Excellence</b>	Josh Pearce	<b>D &amp; T Excellence</b>	Brad Clunie
<b>Yr 6 Environmental</b>	Molly Owen	<b>D &amp; T Improvement</b>	Abbey Trawinski
<b>Yr 6 Woodside Scitech Science Award <u>Female</u></b>	Kaitlyn O'Neill	<b>CALTEX All Rounder</b>	Chloe Robertson
<b>Yr 6 Woodside Scitech Science Award <u>Male</u></b>	James Ayers-Dillon	<b>Community Service Award</b>	John Berdin
<b>Yr 6 Art Encouragement</b>	Ethan Hutter	<b>YEAR 10 AWARDS</b>	
<b>Yr 6 Citizenship</b>	Josh Pearce	<b>Long Tan</b>	Holly King
<b>Choir Award Consistency</b>	Summer Earnshaw	<b>Academic Excellence</b>	Holly King
<b>Choir Award Endeavour</b>	Michael Watson	<b>Lions— Scholarship</b>	Adam Hunt
		<b>Bennett—Scholarship</b>	Holly King





## Lake Grace District High School Concert Awards Night 2014

Congratulations to all the Award Recipients for 2014  
and thank you to all our Award Sponsors:

Lake Grace Lions Club

Landmark

Bankwest

Lake Grace Plaza

Elders

Farmworks

Christine Robbins

Terry Waldron

Australia Post

CALTEX

Aust. Defence Force

Ernest & Catherine Bennett (Bennett Family)

Woodside Scitech

Lake Grace Art Group

Neu-Tech Auto electrics

Amanda Trevenen

Lake Grace DHS P & C

Darren West MLC

Albany Residential College

Great Southern Fuel Supplies

Lake Grace Engineering

Kulin Masonic Lodge

Shire of Lake Grace



*Left: Faction captains Chloe & Zhane Robertson with Principal, Mrs Mottershead receiving the winning Faction Trophy for HAWKS.*

*Above: Students performing the whole school item.*



*From left:  
Secondary students  
John Berdin,  
Clayton Clunie,  
Poch Amores,  
Oakley Major,  
Zhane Robertson,  
Cooper Earnshaw,  
Hannah Clunie,  
Whitney King,  
Charlee Earnshaw,  
Emily Younger &  
Michaela Stoffberg  
performing  
'GREASE'*

# NRM Opportunities in 2015!

Paul Leoni

First up, happy new year! WOW, we are already in February, but lets reflect on 2014. From May to October a large number of NRM applications were submitted by the local agriculture community via the NRM Community Support Officer. Good on you farmers!!! It's clear there is a 'HUGE' demand for continued NRM support in the Kent Shire district area.

The 'hot-potato' for requested NRM applications (by a vast majority) was livestock-fencing, to protect remnant vegetation (especially the understorey part of bushlands) from grazing. Congratulations to Pingrup farmers, Altham (Tony & Hayley) and Nichols (Ross & Leonie) for being the very first landholders in the Kent Shire NRM district area to receive NRM funds in 2014 to fence off valuable bushlands to protect biodiversity flora and fauna. For a full-list of successful 2014 funding applications please see opposite page. Note: Listed projects granted are estimated figures (~) and subject to possible change.

Not mentioned on this project-grant list are independently-applied NRM funding applications from the Kent Shire NRM district area. Congratulations to the: Nyabing Farm Improvement Group (**NFIG**) for receiving funding to continue a soil liming trial; and the

(Lake King) Lakes Grower Group for receiving funding to trial soil improvement works using a range of promising Bio-Stimulant materials (carbon based products).

Don't forget there are funding opportunities for soil health projects that can facilitate crop yields as well as NRM outcomes. If you have crop and livestock ideas, send them through via the survey mentioned below.

**NEXT ROUND OF BUSHCARE APPLICATIONS OPENING!** Wheatbelt NRM (*Avon Catchment Group*) will announced the next round of Bushcare funding in February. Eligible Bushcare activities include: **Fencing Remnant Vegetation; Control of Non-Native Flora and Fauna; Revegetation.**

**FARMER NRM/LANDCARE NEEDS SURVEY** What NRM needs do you have on your farm? Get your needs supported (and possibly funded) by **filling-in** the two-page survey on the next pages here. I hope to meet more land-managers before seeding to review your surveys and nut out new NRM support projects for the district. See you soon!

## Lake Grace Transport

Twice weekly freight service to and from Perth

- ◆ Secure depot in Perth to drop freight off
- ◆ For all your wool and general freight
- ◆ Forklift to load wool on farm
- ◆ Accreditation to load at Midland Brick
- ◆ We also cart bulk grain, fertilizer, lime, gypsum and firewood

Your friendly local operator - nothing is a problem, only too happy to be of service.

For all your freight needs call:  
Rex on 0429 649 021 or  
Darren on 0428 651 339



## Lawn Mowing & Gardening Services

e: pksgardening1@gmail.com

- Mowing
- Reticulation
- Garden design
- Soil testing
- Pruning
- General garden maintenance

**PLUS LOTS MORE!!**

Peter Kain (PK) or Deb

p: 0427 020 561





## SUCCESSFUL 2014 'NRM/LANDCARE FACILITATED GRANTS' - KENT DISTRICT AREA

Shire	Catchment	Funding Donor	Grant Program	Surname	First Name	Quantity Granted (KM or Fencing or Ha of Reveg.)	Rate Granted (\$/KM Fencing or \$/seedling)	Total Allocation Granted (\$)	Extent of Works (Ha of Remnant Vegetation Protected)	Tenure of Location (for on-ground works)
Non Specific		Wheatbelt NRM Inc - Equipment.		Nyabing / Pingrup LCDC & Kent Shire.		x1 Pentax SLR, x1 Garmin GPS-Cam, x1 Bushnell Motion-Cam & x1 Banner.		~\$2,059	For Environmental Monitoring & Promotion in Kent District Area.	
KENT	BLACKWOOD	Wheatbelt NRM Inc - Events.		Nyabing / Pingrup LCDC.		x1 Catering for Nyabing Town Water Workshop.		~\$400	02-Sep-2014 @Nyabing Pavilion	
		State NRM Office	Community Grants	Admin.	-	n/a	n/a	~\$2,000	n/a	n/a
				Jolly (for Hurst)	John & Vicki	~2.41km	\$1,930	~\$4,652	~20ha	Private.
				Hobley	Terry & Beth	~1km	\$1,930	~\$1,930	~50ha	Private.
				Hobley	Ben & Fiona	~2.83km	\$1,930	~\$5,462	~58ha	Private.
				Browne	Trenton & Rachel	~3.75km	\$1,930	~\$7,238	~8ha	Private.
				Brown	Ewen & Karen	~2.45km	\$1,930	~\$4,729	~25ha	Private.
				Harris	Neville & Pam	~1.15km	\$1,930	~\$2,223	~40ha	Moornaming Nature Reserve - DPaW.
				Crosby	Scott & Michaela	~3.5km	\$1,930	~\$6,755	~335ha	Water Reserve - Water Corporation.
		Bushcare.	Crosby	Graeme & Cathv	~5.65km	\$2,500	~\$14,125	~50ha	McDougall Nature Reserve DPaW.	
			Dolan	Clinton & Jenni	~6.5km	\$2,500	~\$19,750	~1400ha	Private (adjacent to Reserve on Ripper Rd).	
				~1.4km	~97ha			Coorneecup Nature Reserve - DPaW.		
			SW Catchments Council	Blackwood Catchment - Kent Shire		~11ha (Reveg) (@800sdl/ha)	\$0.55 / seedling	~\$5,000	Reveg. (~11ha).	Allocated to several private properties.
								~17km Fen. & ~11ha Reveg.	~\$74,264	
KENT	AVON	Bushcare.		Nichols	Ross & Leonie	~4km	\$2,500	~\$10,000	~170ha	Private (adjacent to CairlocupNR-DPaW).
			Altham	Tony & Hayley	~1.1km	\$2,500	~\$2,750	~4.5ha (part of 33ha)	Private.	
						~5km Fen.	~\$12,750			
LAKE GRACE	AVON	Bushcare.		Marshall	Grant	~4.15km	\$2,500	~\$10,375	~2.5ha	Private.
						~13ha (@800sdl/ha)	\$0.55 / seedling	~\$5,720	~13ha	
				Carruthers	Greg & Paula	~6.29km	\$2,500	~\$15,725	~270ha	Private.
				Milton	Graeme & Amanda	~2.92km	\$2,500	~\$7,300		
				O'Neill	Kelvin	~1.07km	\$2,500	~\$2,675		
				Dunham	Tom & Doug (5.19km fencing total)	~1.43km	\$2,500	~\$3,575	~8.5ha	Private.
						~1.42km	\$2,500	~\$3,550	~35ha	
						~1.22km	\$2,500	~\$3,050	~2ha	
						~1.12km	\$2,500	~\$2,800	~73ha	
				Naisbitt	Ed	~2.24km	\$2,500	~\$5,600	~38ha	Private (adjacent to Lake Grace saltlake).
						~3.65km	\$2,500	~\$1,925	~140ha	
				Naisbitt	Kevin	~6.2km	\$2,500	~\$15,500	~1760ha	Private (adjacent to Lake Grace saltlake).
				Watson	Brad & Janine	~2.85km	\$2,500	~\$7,125	~1180ha	
						~34km Fen. & ~13ha Reveg.	~\$84,920			



# NEU-TECH AUTO ELECTRICS

*AUTHORISED BOSCH AUTO ELECTRICAL SALES & SERVICES*

Stubbs Street, PO Box 178, Lake Grace 6353

Phone: 9865 1164 Fax: 9865 1543



Here we are in mid February already, only 8 more weeks until seeding starts for some! So it's probably timely that we inspect and review our machinery etc to avoid the rush.

1. **Two Ways** - check all two ways are operational, clear and have full range. If you need any new units especially VHF, order them now to allow for programming of frequencies. We can SWR and power output sets on farm or in the shop.
2. **Batteries** - check batteries are charged and capable of starting machine easily. We recommend 'float' type battery chargers to keep batteries fully charged. If batteries are being drained we can track drains or fit isolation switches if required.
3. **Electrical Systems** - does it start OK? Is the alternator charging OK? Do all the gauges work accurately? We can supply and fit auxillary gauges and engine protection alarms. Low water alarms have saved many an engine that has blown a radiator hose.
4. **Monitors** - are the air seeder monitors working OK? Are all the clutches, sensors, switches and connectors clean and serviceable? Inspect the wiring wiring harnesses, don't find out in April that the cockies have chewed through the wiring.
5. **Camera Systems** - we sell and install TV camera systems both cordless and hard wired. They have been very reliable, especially considering the environment they operate in and can be used to monitor bin levels, shafts, wheels or trouble points.
6. **Lighting** - LED lighting is really taking over the whole spectrum of lighting, it's bright, draws less power in comparison to standard lights and proving to be very durable and reliable. We sell narrow and wide angle floodlights and are looking into LED upgrade kits. Drop in and talk to Ross or Joel about your requirements.

So don't leave it until April to start looking at your equipment as you risk lengthy delays in service and parts.

Don't hesitate to ring with any queries. 9865 1164

# LAKE GRACE HOSPITAL – Multi Purpose Service

providing **24 hour Emergency Health Care Services**  
and **Community Care Services** to Lake Grace and the surrounding district

CONTACT DETAILS = TELEPHONE: **9890 2222** FAX: **9890 2202**

## HACC & MPS Activity Programs:

### Chair Aerobics

Every Tuesday @ 10.45am

At the Lakes Village Hall

\*Exercises for people with limited mobility\*



### Morning Tea & Activity

Hospital Activity Room every Wednesday

Time: 10am—11.30am

11th February—Trivia & Puzzles

18th February—Pamper (hand massage)

25th February—Trivia & Puzzles

4th March—Sing-a-long

### Bus Outing

Friday 13th February 2015

approx. 9.30am—11.30am

### 4th Friday Activity

Friday 27th February

Craft Activity /Games /Trivia

10.00 am—1.30pm

Lake Village Hall

RSVP 24th February for catering, please



**Call 9890 2222** to get further information or to book a place for any of our activities

*HACC—providing support to remain independent in your home and community*

## Immunisation:

Regular clinics held in Lake Grace and Newdegate.

**Appointments are required**

Contact Child Health Nurse on ph: 9890 2246



## Preventing Falls

Staying fit and independent is an important part of healthy ageing.

Falls and falls-related injuries are serious health issues and are the leading cause of injury hospitalization for older people.

Falls are NOT an inevitable part of getting older and can be prevented.

The good news is that there are some simple steps that can reduce your risk of having a fall.

### Nine steps to stay on your feet

1. Be active
2. Manage your medicines
3. Manage your health
4. Improve your balance
5. Walk tall
6. Foot care and safe footwear
7. Regularly check eyesight
8. Eat well for life
9. Identify, remove and report hazards

The Lake Grace MPS provides weekly Chair Aerobics classes and fortnightly SwimAbility hydrotherapy (at Narrogin) to help seniors maintain their mobility.

The monthly Foot Clinic assists with general foot health. There are also weekly Stay On Your Feet exercise sessions held at the Lake Grace Shire Hall and during the summer months it is good to see a lot of people making use of the swimming pool to exercise.



When attending the hospital please make use of the Doorbell with intercom (located outside the foyer entrance) or the Nurse Call Bell (located in the Outpatient entrance waiting room) to advise staff of your visit. Thank you!



# Claiming Website Development Costs

*Taken from ATO Website*

If you pay for a website for your business, here are some things to remember about claiming the costs. If you spend the money:

- before your business starts – then you claim the cost over five years once you start up
- after your business starts, and you pay:
  - more than \$1,000 you must claim the cost over four years
  - less than \$1,000 you can claim that cost as an outright deduction.

You can also claim an outright deduction for some ongoing expenses associated with running and maintaining your website, such as domain name registration fees and server hosting costs.

## Let's look at three examples

1. You're getting ready to start a business and you spend \$2,000 for a website design. The \$2,000 you

spent before your business started can still be claimed against your business income over five years.

2. You're in business and choose a business website hosting package that costs you \$4,000 to set up. You also have to pay \$350 a month, plus \$50 a year for the domain name. The \$4,000 should be claimed over four years. The monthly and yearly fees can be claimed as a deduction in the year you incur the expense.
3. You run a small business and have decided to promote your services online. You buy an \$800 static website and pay \$100 a month for hosting. The \$800 can be claimed as an outright deduction, and you can also claim the monthly hosting fees as a deduction against your business income.



**APPRENTICE AGRICULTURAL MECHANIC**

**LAKE GRACE, WA**

Farmers Centre requires an apprentice mechanic to join our team in Lake Grace. The successful applicant must be enthusiastic about modern technology and be willing to learn in the progressive industry of agricultural machinery. They must have a positive outlook and the ability to work well with others in a busy workshop.

For more information contact  
Steve Morrow on 0429 842 263  
Or email resume to  
steve@farmerscentre1978.com.au

## Lake Grace Pingrup Football Club (Inc)



### **Annual General Meeting** **Thursday 19th February** **Lake Grace Sportsman's Club** **@ 8.00pm**

**Election of office bearers for 2015 (formalise committee members elected at Special General Meeting held 23rd October 2014)**

**SPECIAL BUSINESS/CHANGE OF ITEM IN CLUB CONSTITUTION:**

To change a phrase in section 33 of the constitution (DISSOLUTION OF THE CLUB) from 'another Club or institution' to 'another association incorporated under the Act'.

This amendment is to legally comply with the 'ASSOCIATIONS INCORPORATION ACT 1987

To insert into the constitution 'That the financial year of the Lake Grace-Pingrup Football Club be from 1st of November of any year to the 31st of October the following year.

Any enquiries or apologies to: ghpmcarr@bigpond.com  
Royce Taylor (interim LGPFC President)

# Shire of Lake Grace Community News

PO Box 50, Lake Grace WA 6353 | Ph: (08) 9890 2500 | Fax: (08) 9890 2599 | Email: shire@lakegrace.wa.gov.au

## CEO's Corner



### Leonard Harry Elliott – Honorary Freeman of the Shire

It is with deep regret that we record the passing of Shire of Lake Grace Honorary Freeman Mr Leonard Harry Elliott (Len).

Len served as a Shire Councillor from 1963 to May 1972, then from May 1973 until his retirement from Council in 1993. During this period he was Shire President for a five year period from May 1983 to May 1988.

In April 2002 Len was awarded the title of Honorary Freeman of the Municipality for rendering outstanding service to the District of the Shire of Lake Grace for his 29 years' service, the highest honour any local government can bestow on one of its constituents.

Len's Award states:

*'Whereas during the period of his service Leonard Elliott has endeared himself to the community by the manner in which he has devoted himself to public welfare and by his enthusiasm and sincerity has attained the respect and admiration of the electors and residents of the Municipality.*

*Now therefore, in recognition of the contribution he has made to the progress of the Shire and as a token of appreciation of the wise counsel and wholehearted support he has given to the administration of it, the Council of the Shire of Lake Grace forever binds him as Honorary Freeman of the Municipality and is proud to record this testimonial of its respect and esteem.'*

We salute Len as one of nature's gentlemen and a wonderful ambassador and a great champion of this Shire.



*Sincere sympathy is extended to the Elliott family, Lenore, Wendy, Glenda, Lois and their families on the sad passing of their Dad, Father-in-law, Grandad and Great Grandad.*



Mr Len Elliot with his Honorary Freeman Award, wife Shirley and daughters Lenore, Wendy and Lois pictured at the Annual Shire Dinner on 12 April 2002 following the presentation of his Award.



## Shire of Lake Grace Community News

PO Box 50, Lake Grace WA 6353 | Ph: (08) 9890 2500 | Fax: (08) 9890 2599 | Email: [shire@lakegrace.wa.gov.au](mailto:shire@lakegrace.wa.gov.au)

### Office Opening Hours

Monday to Friday  
8.30am - 4.30pm

Staff can be contacted by phone

### Licensing Opening Hours

Monday to Thursday  
8.30am - 4.15pm

Friday  
8.30am - 4.00pm

### Tip Opening Hours

#### Lake Grace

Monday, Wednesday, Saturday & Sunday  
7am - 6pm

#### Newdegate

Wednesday 9am - 3pm  
Saturday 8am - 12pm

#### Lake King & Varley

Open Every Day

### Waste & Recycling Pick up Dates

Household Waste Collection is weekly and collected each Monday for Lake Grace, Newdegate, Lake King & Varley.

Recycling is fortnightly and alternates between Lake Grace & Newdegate. See below for the upcoming recycling collection dates.

**Please Note:** There is no kerbside recycling collection service in Lake King or Varley.

Lake Grace	Newdegate
23 February	16 February
9 March	2 March

For more information on Waste Management visit the Shire's website.



Check out our website  
[www.lakegrace.wa.gov.au](http://www.lakegrace.wa.gov.au)

### Driving Assessor

The Practical Driving Assessor will be at the Shire of Lake Grace Office on:

**Friday 6 March 2015**

Please contact the Shire's Customer Service Officer for an appointment.

You can now book your PDA online. For more information visit [www.transport.wa.gov.au](http://www.transport.wa.gov.au)

### Building Surveyor

Shire Building Surveyor, Josiah Farrell will be available at the Shire Office on the following dates:

**Tuesday 24 February 2015**

To make an appointment please contact Josiah on 0438 811 944.

### We want your photos

For people who always have their camera at hand the Shire is looking for photos to promote our area.

If you have any photos of events, infrastructure or landscape please email, with a description, to [shire@lakegrace.wa.gov.au](mailto:shire@lakegrace.wa.gov.au).

Your photos will be used to promote the area on our website, Facebook page and publications.

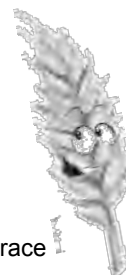
Please ensure you have permission from the people who are captured in the photo.

### Community E-News

Are you wanting to receive the Shire's Community News, updates and latest news direct from the Shire to your email?

To register please contact the

Shire on [www.facebook.com/ShireofLakeGrace](http://www.facebook.com/ShireofLakeGrace)  
(08) 9890 2500.







## Shire of Lake Grace Community News

PO Box 50, Lake Grace WA 6353 | Ph: (08) 9890 2500 | Fax: (08) 9890 2599 | Email: [shire@lakegrace.wa.gov.au](mailto:shire@lakegrace.wa.gov.au)

### Total Fire Bans



A Total Fire Ban (TFB) is declared because of extreme weather conditions or when widespread fires are seriously stretching firefighting resources. A TFB is declared by DFES following consultation with local governments.

When a TFB is declared it prohibits the lighting of any fires in the open air and any other activities that may start a fire.

The ban includes all open air fires for the purpose of cooking or camping. It also includes incinerators, welding, grinding, soldering or gas cutting.

A Total Fire Ban is different to a Harvest & Vehicle Movement Ban which is enforced by local government. If a Harvest and Vehicle Movement Ban has not been implemented by your local government you are able to harvest or move vehicles across paddocks for agricultural purposes.

More information on Total Fire Bans can be found on the DFES website, [www.dfes.wa.gov.au](http://www.dfes.wa.gov.au) or by calling the Total Fire Ban Information Line 1800 709 355.

If you believe weather conditions are unsuitable and the activity you are undertaking may cause a fire, please stop what you are doing and resume the activity when weather conditions are safe.

### Attention Newdegate and Lake Grace Residents!

#### Have Your Say - New Footpath

As part of the 2014/15 Capital Works Program, the Infrastructure Services Department at the Shire would like to consult the communities of Newdegate and Lake Grace about most suitable locations of a concrete footpath (150m long, 1.8m wide) in each town.

Please, submit your proposals in writing **by 15 February 2015**, to:  
Shire of Lake Grace  
PO Box 50  
Lake Grace 6353



### Newdegate Tip

The Shire apologises for any inconvenience caused to Newdegate Residents with the Newdegate Tip opening late on several occasions in January. We will endeavour to ensure the Newdegate Tip site is open on its designated days and time in the future.

### Final Rates Instalments

The final rates instalments notices have been issued. Instalments are due on the 10 March 2015.

If you have any enquiries please contact the Shire's Senior Finance Officer, Warrick Millar on 9890 2500.

### Goodbye & Good luck

This week we farewell a member of our Building Team, Andrew Lewis.

Andrew started at the Shire as an Apprentice in Carpentry & Joinery in July 2012. In July 2014 Andrew qualified and received his trade certificate. Andrew has been a part of the building team, working on large projects such as the Independent Living Units and the Lake Grace Pavilion. We thank Andrew for all his hard work and dedication over the past two years and wish him all the best in his future adventures.

### Roadworks

#### Holt Rock South Road



Roadworks are taking place from 5/02/2015 till 12/02/2015, on Holt Rock South Rd and Newdegate North Rd as part of Shire's annual reseal program. Please obey traffic managers instructions and speed limits. Some delays are expected



#LakeGraceShire





## Shire of Lake Grace Community News

PO Box 50, Lake Grace WA 6353 | Ph: (08) 9890 2500 | Fax: (08) 9890 2599 | Email: [shire@lakegrace.wa.gov.au](mailto:shire@lakegrace.wa.gov.au)



# What's Recyclable and What's Not!



### What's Recyclable:



- \* Plastic bottles
- \* Newspaper
- \* Cardboard (clean)
- \* Paper Grocery bags
- \* Egg Cartons
- \* Magazines, junk mail, stationery and envelopes
- \* Glass bottles and jars
- \* Milk & Juice cartons
- \* Aluminium/tin cans, foil, trays
- \* All plastic food containers
- \* Empty aluminium aerosol cans

### What's Not:



- \* Plastic wrap
- \* Plastic bags
- \* Styrofoam (including disposable coffee cups)
- \* Paper towels, napkins, tissue paper
- \* Paper plates, soiled paper
- \* Fast food wrappers
- \* Food waste
- \* Cups, plates, wine and drinking glasses
- \* Light bulbs
- \* Batteries
- \* Green Waste

## Recycling Services

Recycling bins are collected by Warren Blackwood Waste and transported to a recycling facility.

If items which are not recyclable are found the content can't be recycled and the load will be directed to landfill.

If an item is covered in food, it is not recyclable. Food is one of the worst contaminants in the recycling process. Please remember to rinse out cups, cans, jars etc. before throwing them in the bin.

By using the yellow top recycling bin correctly you are contributing, in a combined community effort, to reduce the amount of rubbish that is directed to landfill facilities each year.

## Recycling at our Local Tip Sites

If you are located where the recycling service does not extend, e.g. on a farm, you are still able to help the environment and recycle.

Located at our tip sites are designated bins for recyclable material, including bottles, cans and cardboard. These bins are collected and transported to a recycling depot.



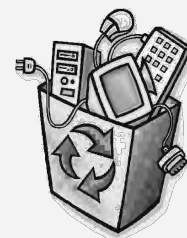
Recycling Bins at tip sites

## E-Waste (electrical appliances)

Australians are among the highest users of new technology, making e-waste a growing problem.

E-waste can contain materials and chemical components which can cause harm to our environment and human population, leaching into soil and groundwater. When recycled at designated recycling facilities, e-waste is disposed of in a safe manner or reused to produce new products.

A list of e-waste recycling facilities can be found on the Planet Ark, Recycle Near You website, <http://recyclingnearyou.com.au>





## THE ROOF & WALL DOCTOR *Is Back In Town!!*

Like to have your roof replaced with new Long lengths of Zincalume or Colorbond? How about new gutters & downpipes, Insulation or a Skylight?

**WE REMOVE OLD TILES, IRON, ASBESTOS & DECRAMASTIC**

### WE SUPPLY & FIT NEW:-

- ✓ Zincalume & Colorbond
- ✓ Gutters & Downpipes
- ✓ Insulation & Skylights

ALL RE-ROOFING WORKS  
IN WA, IN EXCESS OF  
\$20,000 (inc GST), CAN ONLY  
BE CARRIED OUT BY A  
LICENCED & REGISTERED  
BUILDING COMPANY

### **ROOF RESTORATIONS & CLEANING RESTORATION OF FRETTING BRICK & STONE WALLS**

All quotes carried out on-site, by the Doc himself. We service all country areas. Get your free quote now, while we are in your area.

## **THE ROOF & WALL DOCTOR**

16 Essex Street FREMANTLE WA 6160

**Phone:- 9430 6553**

***FULLY GUARANTEED & FULLY INSURED***

Registered with The Builders Registration Board #13172



**OWNED & OPERATED BY  
THE SAME FAMILY  
OWNERS FOR OVER 20 YRS**



WorkSafe Asbestos Removal Licence No:- 0037  
Or Visit us on our Website: [www.roofandwalldoc.com.au](http://www.roofandwalldoc.com.au)  
Email:- [roofandwalldoc@iinet.net.au](mailto:roofandwalldoc@iinet.net.au)  
As Seen on GWN & Channel 7 "Home in WA"



# Puzzles & Stuff

Some words from the 29/01/2015 edition of Boggle

Annotated  
Annotate  
Andante  
Annatto  
Notated  
Tannate  
Adnate  
Annatto  
Atoned  
Attend  
Donate  
Natant  
Notate  
Tanned  
Tenant  
Anent  
Anode  
Anted  
Atone  
Oaten  
Tanto  
Aeon  
Anoa  
Anon

Anta  
Ante  
Data  
Date  
Dato  
Dean  
Dona  
Etna  
Naan  
Neat  
Odea  
Taed  
Tana  
Teat  
Toad  
Toea

8	2	4	3	7	1	5	6	9
9	1	3	5	2	6	8	4	7
5	6	7	8	9	4	2	3	1
6	3	8	9	5	2	7	1	4
4	5	2	6	1	7	9	8	3
7	9	1	4	8	3	6	5	2
1	8	9	2	3	5	4	7	6
2	7	6	1	4	8	3	9	5
3	4	5	7	6	9	1	2	8

Answers to 29/01/2015 Sudoku

4	1	9	2	6	8	7	5	3
8	6	7	5	3	1	9	4	2
5	3	2	4	9	7	1	6	8
9	2	5	8	7	4	3	1	6
7	8	6	1	5	3	4	2	9
3	4	1	9	2	6	5	8	7
6	5	4	3	8	9	2	7	1
2	7	3	6	1	5	8	9	4
1	9	8	7	4	2	6	3	5

W	C	K
I	A	I
B	L	I

*This week's Boggle*

---



---



---



---



---



---

## Stubby's Electrical Pty Ltd T/A

# Outback TV

## LAKE GRACE

LIC NO: EC 004197

RTA No: AU29828

- For all your domestic and rural electrical installations and repairs
- Ditchwitch hire and cable location
- Split system air conditioning installation and decommissioning.



Phone Stubby or Devon 9865 1092 all hours. Fax 9865 1328.

Mobile 0429 651 092 or 0429 651 069.

## That's A Wrap – Harvest Is Over For 2014/15

### Media Release

Western Australian growers have delivered the fourth largest harvest in history, with 13.52 million tonnes received. The total is around 3 million tonnes more than CBH's ten year average.

CBH Group General Manager Operations David Capper said this year's final harvest figure was higher than expected.

"Inclement weather throughout harvest made it very challenging for many growers and in some regions this contributed to a reduction in yields of about 15 percent. Despite this some growers in the Southern parts of the grain growing region had higher than expected yields which raised the overall harvest figure," said Mr Capper.

"CBH would like to say thank you to everyone for your support and patience, it's been a frustrating year for a lot of people with the stop start nature of harvest.

"In the last financial year CBH invested \$153 million in the network through capital expenditure and maintenance of the network. This was possible because of the bumper years we have just had and that spend has shown its value.

"The works undertaken include the \$15 million upgrade to the Chadwick site, which included automated sampling spears and the ability to sample and weigh at the same time, speeding up discharge times."

This year also saw rail records broken; with the largest ever amount of grain being moved by rail across WA during November, moving 693,108 tonnes.

CBH also transported 8,531,430 tonnes from terminal to rail from October 2013 to September 2014, this was the all-time season record.

The total shipped from 1 November 2013 to 31 October 2014 was also a record amount at 13,794,735 tonnes.

"We have been really pleased with how logistics were handled this harvest. We had some challenges with the closure of Tier 3 by Brookfield Rail and the huge task of out loading the record harvest before receivals began," he said.

"The CBH team have worked so hard to bring this crop in through a long and at times wet harvest. I am also incredibly grateful to all growers for their support and cooperation throughout the harvest."

While harvest has finished, a number of growers in the Esperance and Albany Zones are still delivering some small quantities of grain off farm.

For site opening and closing times, growers can contact their local Area Manager.



### Want a better Deal on Bulk Haulage this season?

**Do you want to see how you can benefit from a professional team that can offer more than just transport?**

**As your local Seed Shield operator we can grade and treat all your seed to the highest standard and we can take care of all your Bulk Haulage and market spec grain cleaning.**

**For more details on how SCL can work with your business to deliver the services you need and how we can help you save please call Matt on 0427 401 175 or email**

**[matt@sclaustralia.com.au](mailto:matt@sclaustralia.com.au)**

## Parents & Citizens Needs You (cont.)

governance, roles and responsibilities, meeting format and WACSSO's role within your organisation. This training is free and is a golden opportunity for anyone to take advantage of; this training will not only help you with P&C commitments it will also help you with any other organisation that you may be involved with.

WACSSO, in case you have never heard of them, is the peak body representing parents of public school children in WA. They provide services and representation at State and National level to approximately 640 Parents and Citizens Associations in the State. WACSSO influences the direction of public education for the benefit of students and is in a position to lobby and advocate at a State and Federal level. Its services include the provision of insurances, P&C training programme, access to expert advice and information, online support via their website and social media and provide support through district-based state councillors. Like many peak bodies they have a range of brochures and guidelines to assist with the day-to-day operation of the P&C.

Lake Grace DHS's principal, Ashley Mottershead, is quick to recognise the valuable support that the P&C provides to the school. "P&C has enabled us to enrich programmes in a way that is not otherwise possible, such as the recent \$10,000 committed to purchasing reading books", said Ashley. She also mentioned that although P&C is primarily involved in fundraising, it is a wonderful conduit between the school and the wider community, providing the school with feedback and an opportunity to build meaningful community engagement in education.

Current volunteers are flagging. They are left wondering how they can keep on staying energised and committed if a large percentage of parents with enrolled children aren't also contributing. With the Lake Grace P&C possibly being the oldest volunteer community organisation in our town it is important that all parents get involved and contribute in some way.

The P&C will be holding their AGM at 7:30pm on Monday 16<sup>th</sup> February in the staff room at the school, they would love to see you there.



# EDWARDS HOLDEN

## NARROGIN

DL: 1861

**New and Used Vehicles, Parts and Service**

**YOGI MELVIN**

**SALES MANAGER**

**PH: 08 9881 5555**

**MOBILE: 0428 887 024**

**EMAIL: [kim.melvin@edwardsmotors.com.au](mailto:kim.melvin@edwardsmotors.com.au)**

*Where the kettle's always on and the fridge is always full.*



# Country Music Supports Safe Driving

## Media Release

Through its Community Sponsorships program, RAC will provide \$12,500 to support the Boyup Brook Country Music Festival which celebrates its 30th anniversary this year.

With the South West road fatality rate double that of the State last year, RAC has partnered with the Country Music Club of Boyup Brook to campaign against drink driving and raise awareness of the road safety issues impacting regional WA.

Country Music Club of Boyup Brook Music Director Sharon Winter said music will be an effective platform for addressing the importance of staying safe on the roads.

"We're pleased to partner with RAC to address the road safety issues because we want everyone to enjoy themselves and get home safely," Mrs Winter said.

"Last year over 11,400 people attended our festival and 96% travelled from outside the Shire of Boyup Brook, 45% of whom were from rural WA.

Featured at the festival will be the Road Safety All Stars from the Northern Territory, a talented band of Aboriginal artists who sing songs about safe driving using various styles of music.

Presentations by paraplegic Keith Conder from the Paraplegic Benefit Fund and a car crash re-enactment by local fire brigade, ambulance and police volunteers will demonstrate how speed, drink-driving, animal distractions, fatigue and road conditions can cause a serious crash.

The Festival, hosted by local celebrity Russel Woolf, runs from 11-15 February 2015 and promises to be a buzzing hub of music, arts and culture.

Manager of RAC's Bunbury Member Service Centre Jacob Azzopardi said the sponsorship support is part of the \$850,000 already provided to local communities across the State since RAC's Community Sponsorship program began in 2011.

"RAC has been giving back to the Western Australians for 110 years and is proud to support the local community," Mr Azzopardi said

"RAC will be at the Festival Markets on Saturday morning so pop down and say hello."

The next round of RAC's Community Sponsorships Project category closes on Monday 23 February 2015 and RAC is encouraging community groups across WA to apply for sponsorship support of up to \$20,000. For more information, visit [rac.com.au/sponsorship](http://rac.com.au/sponsorship).

## Farm Supplies Sales Representative

Lake Grace, WA



### Expressions of Interest

An opportunity exists in our Lake Grace branch for a Farm Supplies Sales Representative, responsible for providing exceptional service to customers of the branch and achieving allocated sales and earnings objectives.

Duties include develop and implement merchandise sales plans, maintaining sales displays and storage areas to promote the sale of products to clients, ordering merchandise stock, inventory control, and providing administrative support to the branch with limited on road sales. A forklift licence is desirable. Previous experience preferred but not essential.

For more information about this exciting opportunity please contact Shane Carruthers, Branch Manager on

0428 854 472

To apply please forward your expression of interest letter and resume to [shane.carruthers@elders.com.au](mailto:shane.carruthers@elders.com.au)

*At Elders we encourage applications from a diverse range of people, backgrounds and experiences.*



## Across the Lake Wines

### Annual Community Grape Pick

**Friday 20<sup>th</sup> February\***

6.00am start

Breakfast and morning tea provided. Bring secateurs, hat and water bottle.

**Donations to the  
Lake Grace District High School P&C**

\*This date is subject to change and notice will be given if this does occur.

## Stuart Strengthens Macrofertil Team in Great Southern

### Media Release

MACROFERTIL has added to its extensive network of account managers and local agents with experienced fertiliser account manager Stuart Currie joining its team this month.

Working with Danny Morris, based in Albany, Stuart will be growers' key contact in four shires – Gnowangerup, Jerramungup, Kent and Lake Grace. With a university qualification majoring in plant nutrition, combined with 25 years' experience in the fertiliser and crop protection industries, Stuart's goal is to use his broad knowledge to help growers achieve their business goals.

"The fertiliser market is becoming a lot more sophisticated these days and growers look to company account managers to help them understand the many different products available and in my experience, growers are looking for expert knowledge to help them sort the wheat from the chaff," Stuart said.

"For me personally, I'm really excited about the new role because I'll be getting out and meeting with growers on-farm to see how we can help them achieve their business goals. I already know many people in the area and now there's a large part I'm looking forward to exploring.

"I've already been out on the road catching up with farmers to see how last harvest went for them and to get a feel for the products they may be looking at for this coming season."

Stuart says one of the benefits of Macrofertil is, through its parent company Louis Dreyfus Commodities, they have been international commodity traders for the past 160 years and so have strong buying power.

"There's no question about it that this buying power is an advantage for growers, who can access fertiliser, crop protection products and grain trading expertise all in the one location," he said.

Macrofertil Regional Manager WA Chris Puckridge says it is a great plus for the company having someone of the calibre of Stuart Currie joining the team in Albany. Stuart's lifelong background in WA agriculture and his training as a professional agronomist will give our clients a real boost! Stuart joins Danny Morris, Mike Stephens and Ursula Alberdi as part of the Albany team with over 100 years of experience in fertiliser and inputs in the Great Southern.

Macrofertil has a network of depots at Esperance, Albany, Kwinana and Geraldton and a sales team of over 30 people responsible for on-farm servicing.

It has also meant that growers have this increasing network of staff bringing a fresh approach to the fertiliser and crop protection business.

"In the past 12 months, Macrofertil has invested significantly in the Albany depot, putting in a new



**Macrofertil's Stuart Currie recently joined the team, working with growers across the Gnowangerup, Jerramungup, Kent and Lake Grace shires.**

dispatch facility which has doubled the outloading capacity, turning trucks around in less time and ensuring fertiliser quality is not impacted by overhandling," Stuart said.

"At the end of January, we will be unloading our first load of single super phosphate for the year. This is an extremely high quality product sourced internationally by Macrofertil."

Growers can contact Stuart at any time on [stuart.currie@ldcom.com](mailto:stuart.currie@ldcom.com) and 0417 033 256.

*Hayden McGlinn*  
Acoustic Singer  
Song Writer  
Entertainer

Public & Private Functions  
Ph: 0427651990  
[hayden.mcglinn@hotmail.com](mailto:hayden.mcglinn@hotmail.com)




## Wheatbelt STI Testing Rates Amongst The Lowest In The State

### Media Release

Health professionals in the Wheatbelt are urging people to take control of their health, with Sexual Health Week being launched on the 9<sup>th</sup> of February. In recent years Sexually Transmitted Infections (STIs) have continued to rise with Chlamydia being the most common STI in the Wheatbelt. Young people aged 15-24 are most at risk, with 72% of notifications of Chlamydia occurring in this age group.

The easiest way to protect yourself from getting an STI is to ensure that you always use condoms with new partners or with partners that haven't had a sexual health check. If you have had unprotected sex or think you are at risk of contracting an STI it is important that you get tested. Some people with STIs may experience symptoms such as stomach pain, burning while urinating, and unusual discharge in the genital region but up to 80% of people will have no symptoms. It is important to get tested because if left untreated, STIs can lead to health complications in both men and women, including infertility.

The Wheatbelt has one of the lowest STI screening rates in the state with only 28 per 1000 people getting tested for Chlamydia in 2013. This number is alarming when compared to the Kimberley screening rate at 235 per 1000.

Getting tested for Chlamydia and Gonorrhea is a simple urine test that can be done by visiting your local GP or online at [couldihaveit.com.au](http://couldihaveit.com.au)

**For more information please contact the Wheatbelt Public Health Unit on 9622 4320.**

The Lake Grace Community Resource Centre  
is your  
**ATO Access Point**

- ATO forms available
- Free access to ATO websites
- Assistance with ABN applications



Enquiries to the Lake Grace CRC on 9865 1470.



Australian Government  
Australian Taxation Office

**MACRO  
FERTIL**

**"Serving WA Farmers"**



## Parents Can Make A Difference



Have you ever wondered what is involved in being a member of the P & C?

Attend a free P & C workshop and find out how you can make a difference to your child's education.

**Lake Grace Community Resource Centre**

**Thursday 19th February 2015**

**11.00am to 1.30pm**

For more information and to RSVP please contact WACSSO Training and Development Officer on 9264 5026 or email [training@WACSSO.wa.edu.au](mailto:training@WACSSO.wa.edu.au)



### **Ballard Cleaning**

**Pasture Seed and Canola Specialists**

**North Road Tincurrin**

**Ring Neil 9883 2005 or 0428 832 053**

**Canola cleaning and seed treatments**

**Gravity grading, the only way to get the best quality  
seed for sowing**

**Bags, bulka bags or bulk**

**Pasture seed, all species and varieties**

**Serradella de-hulling specialists**

**New bulka bags**

# Cyber Smart - Social Networking & Online Friends

*Taken from Cyber Smart Website*

Chatting to friends using IM, in chat rooms and on social networking sites can be great ways to keep up to date. Social networking sites are used by people worldwide to post information, display photos, tell people what they've been up to, chat and play games.

But while there are lots of good points about keeping in touch with online friends, there are also some risks with meeting people online—especially if you don't know them in real life.

There are some important things to remember when joining a social networking site and chatting with people online:

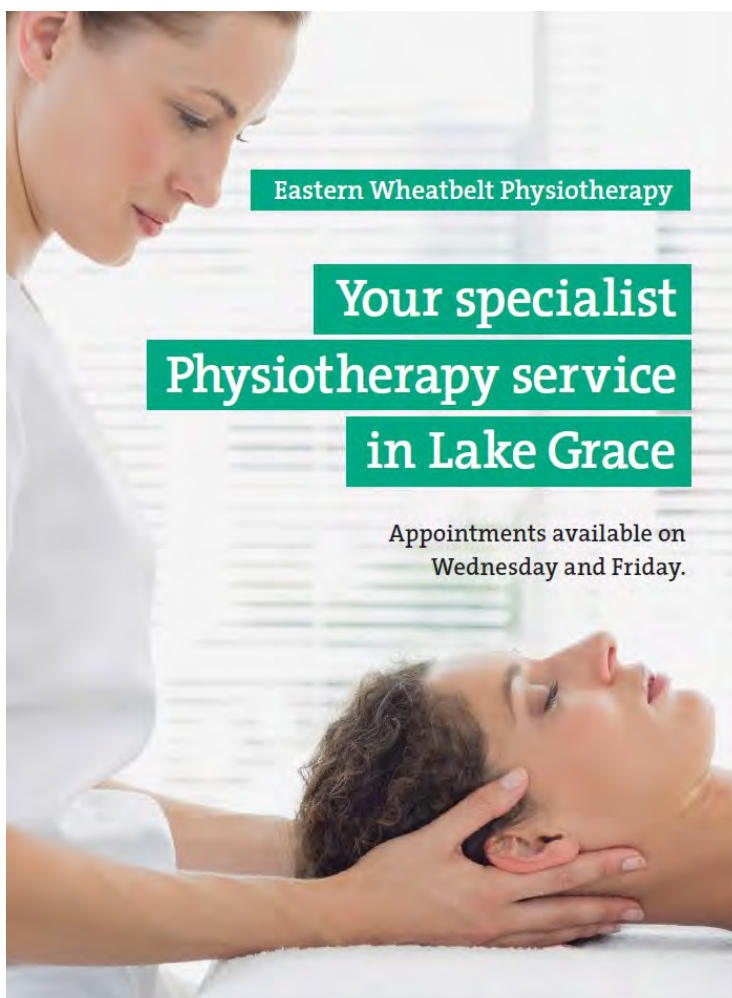
- **Set your profile to private**—customise your profile so only your friends can see it. Ask an adult for help or look for the Help section on the site you are using.
- **Keep your personal details private**—avoid posting personal information such as your full name, address, mobile number or school.
- **Keep your password secret**—don't even share it with your friends.

- **Manage your friend list**—having too many online friends makes it harder to manage who can access your information. Don't accept friend requests if you're not sure about the person.

- **Be careful who you trust online**—a person can pretend to be someone they are not. If you want to arrange to meet someone you've met online, **check with a parent first** and ask them to go with you. Always meet in a public place, preferably during the day.

- Anything you add to your social networking site can be copied or printed, so if you want to put pictures up on your site, **think before you post**. Remember that your site may be seen by strangers and once a picture is online, it's online forever.

**Treat people the way you want to be treated.** Avoid using bad language and don't say nasty things. If someone writes something rude, scary or something you don't like, **tell your parents** or another adult you trust.



Eastern Wheatbelt Physiotherapy

**Your specialist  
Physiotherapy service  
in Lake Grace**

Appointments available on  
Wednesday and Friday.

Eastern Wheatbelt Physiotherapy  
can help with the following:

- > Sports Injuries
- > Back / Neck Pain
- > Ligament Sprains
- > Headache/Migraine
- > Sciatica
- > Musculoskeletal Pain
- > Work-Related Injuries
- > Whiplash

Please contact Jenna Mouritz at Eastern Wheatbelt for further details and to schedule an appointment.

HICAPS Services are available for on the spot claiming with your private health fund.

Lake Grace Medical Centre

T: 0428 619 078

E: ewphysio@gmail.com

 EASTERN WHEATBELT  
PHYSIOTHERAPY



# Bacon & Veggie Slice

*These little gems are perfect as a quick, easy and tasty alternative for the kids lunch boxes! (This recipe is easily adapted for what you have in the fridge, freezer or cupboard. Or what your kids will eat!)*

## Ingredients

- 200 grams Bacon (diced)
- 6 Eggs
- 1  $\frac{1}{3}$  cup Cream
- 1 cup Self Raising Flour
- 1 cup Grated Cheese
- 2 Grated Carrots
- 2 Grated Zucchini
- 1 Onion
- 4 Mushrooms, Sliced
- 2 tsp Tuscan Seasoning
- 2 tbsp Tomato Paste



## Method

- Preheat oven to 180 degrees.
- Whisk eggs, seasoning, tomato paste and cream together.
- Add self raising flour, mix, then add all veggies. Mix with wooden spoon until well combined.
- Line a rectangular baking dish with the diced bacon in a thick layer, pour egg and veggie mix on top.
- Place into oven.
- Bake for 40 minutes until golden brown.
- Cut into slices and freeze for lunchboxes

## Dongolocking Plumbing & Gas *Malcolm Roberts*

**M: 0429 232 987**  
**F: 08 9863 7250**  
**E: malcolmroberts@westnet.com.au**  
**PL8240                      GF014549**



***Where a Royal  
Flush is better  
than a  
Full House***

### Delay in supply of influenza vaccines in 2015

The Government of Western Australia, Department of Health, Public Health and Clinical Services recently sent us the following note regarding the availability of influenza vaccines for 2015.

“There will be a delay to the start of the National Influenza Immunisation Program in 2015. There are no firm dates yet for when vaccines will be available, but it is not likely to be until April. More information will be provided in February.

The 2015 southern hemisphere influenza vaccine will contain two different strains to the 2014 vaccine, and this double-strain change has resulted in manufacturing delays.”

I will advise you all as soon as we have more information regarding the time to start making appointments to have the vaccination.

Henriette Jacobs  
(Practice Manager)





# Live Music


Saturday  
28 February 2015

## Lake Grace Swimming Pool

Music from  
4pm to 6.30pm

Come along relax have a swim, listen to music  
from Lake Grace Local Band and Hayden McGlinn.

Buy a gourmet sausage sizzle from the  
St John Ambulance building fundraising



Entry to Pool	
Adults	\$4.00
Child or Students (over 5)	\$3.00
Toddlers (under 5)	FREE
Spectators (non swimmers)	\$1.00
Seniors/Pensioners	\$2.00



NO ALCOHOL PERMITTED AT THE POOL

# Geoffrey Keith Morgan *(cont.)*

From carpentry to tiling in fact everything to do with building Geoff always without fail finished his job to the highest standard. Customers got good value for money.

Socially Geoff got on well with most reasonable people, we had many meals and many drinks together, perhaps a lot more than what I had with my own brother.

Geoff for all the work you did on this earth we say thank you. For the volunteer work, for full commitment, a commitment with passion and serving so many centres of the fire brigade we say thank you.

To all members of your family we share your pain and suffering as we are certain that you will forgive and not forget. Rest in peace dear friend, you were one of a kind.

**Photo: Geoff Morgan is flanked by Laurie Marshall (left) and Steve Porritt (right) after a Golf Club busy bee.**



## **ANSWERS to the Bits & Pieces Quiz on page 11**

1. Ligaments
2. Football Association
3. Czechoslovakia
4. 1969
5. Cairo
6. Hobart
7. Queen Elizabeth II
8. Dame Nellie Melba
9. The Jaw bone
10. Vomit
11. Cologne
12. English, Italian, Greek
13. Bank notes
14. John Konrads
15. Red Square
16. Mickey Mouse
17. Yuri Gagarin
18. East Berlin
19. Seven
20. 1956
21. Miners
22. German Measles
23. Professional Wrestling
24. Napoleon
25. Tin Lizzie

## **Lake Grace Community Resource Centre**

**Cnr Bishop St & School Place Lake Grace**

**Opening times: Monday to Friday  
9.00am – 05.00pm**

The Department of Human Services is committed to improving access to, and quality of, services in rural, regional and remote Australia. An Access Point can provide information and self-help facilities which can assist you to access services from the Department of Human Services, including Centrelink, Medicare and Child Support, by phone and fax.

At an Access Point you can:

- have your Proof of Identity documents copied and certified for Departmental purposes
- use the telephone to speak to us or to use the self service options
- fax and photocopy documents
- pick up forms and brochures.

**Please note:** there are no Department of Human Services staff at this site.

For further information visit [www.humanservices.gov.au](http://www.humanservices.gov.au)



# LiveLighter Launches New Fruit and Veg Campaign

Media Release

Western Australia's LiveLighter, known for its hard-hitting stance on toxic fat, is taking a vibrant approach for its latest health message to encourage West Australians to eat a colourful range of fruit and vegetables.

Eat Brighter LiveLighter is an Australian first, with WA the first state to have a comprehensive lifestyle campaign.

LiveLighter Campaign Director Maria Szybiak said West Australians were ready for a fresh take on the familiar Go for 2&5 message.

"We've been told for years that we should eat our two fruit and five veg every day, which is still important. What helps keep the motivation up is to brighten up all our meals with a range of colourful fruit and veg."

Eat Brighter LiveLighter will be visible in many of WA's busiest supermarkets and shopping centres.

"People will hear a fantastic ad on the radio when planning their dinner, then see a range of Eat Brighter LiveLighter billboards at their local supermarket," Ms Szybiak said.

There will also be information on the LiveLighter website, including nifty ways to get more colourful fruit and vegetables into your day, plus some simple and tasty recipes.

"Most people know that fruit and vegetables are good for you. By eating a variety of colours each day, you'll maximise nutritional benefits," LiveLighter nutritionist Jenny Atkins said.

"The different colours of fruits and vegetables are caused by different combinations of phytochemicals, which are the nutrients naturally present in plants.

"Putting a variety of colourful fruit and vegetables at the top of your shopping list each week will encourage you to eat more fruit and veges, and has clear health benefits."

The Eat Brighter message is a simple and unique way of encouraging West Australian adults to eat the recommended two serves of fruit and five serves of vegetables each day.

"When you think of fruit and vegetables, think colour instead. The more colour you add to your meal, the healthier you'll be," Ms Szybiak said.



Shop 5, Lakeway Shopping Centre  
22/23 Stubbs Street, LAKE GRACE

Telephone 9865 1465

FASHION FOR THE SALT OF THE EARTH

## Massive Summer Sale - Now On

40% off Ladies and Men's Summer  
Spot Specials on Children's & Baby Wear  
\$10.00 and \$20.00 bargain racks  
Selected Summer up to 50% off

No Layby or Appro on Sale items

Please send in your email address to [sandnsalt@bigpond.com](mailto:sandnsalt@bigpond.com) to register for emails advising of new arrivals or register in store.

Layby available on all new stock and non sale items layby is three months

Appro on new stock and non sale items

Appro - town - overnight only

Out of town - next trip back into town or three days, whichever is first.





# Lake Grace Cricket Club

By Rebecca Reynolds

Lake Grace Cricket Club would like to extend a Happy New Year and best wishes for all in this year, 2015!!!

As you can probably imagine life has been pretty busy since harvest started and continued through Christmas and the holiday season. I have decided to do a quick and simple report for the three games we have played since the harvest break.

## 4/1/2015 - LGCC vs NCC @ Newdegate

Newdegate winning the toss electing to bat

B Reynolds 3/20

S Bowron 2/0

D Souness 2/9

Newdegate bowled for 65

J Duckworth 28 runs

R Trevenen 17 runs

B Reynolds 15 (NO) runs

LGCC winning the match after only 16 overs

## 31/1/2015 – LGCC vs K/PCC @ Karlgarin

LGCC winning the toss electing to bat

B Reynolds 78 runs

L Gray 23 runs

S Bowron 21 runs

LGCC bowled for 180. M Trevenen 1/53

LGCC losing, after setting an impressive run chase.

## 7/2/2015 – LGCC vs NCC @ Lake Grace

Lake Grace winning the toss and electing to bat.

Top scorer – D Pelham 20 runs

Lake Grace bowled for 64 (This is not the record for lowest score!). B Reynolds 3/5

Unfortunately not enough to win, Newdegate played an exceptional game and LGCC lost to a better side.



Junior and Senior Country Week Game reports can be found on the mycricket.com.au website. A big thank you to the players, supporters and family during these two weeks. A special thank you to Belinda Bowron and Kael Gray for managing the teams, fantastic work!

LGCC hosted a Steak Tea Saturday 7<sup>th</sup> February 2015, after suffering a shocking loss during the day the steak tea was a good remedy to socialise and get together in a family environment. Thank you to all that made an exceptional effort making salads, they tasted amazing, as usual, also to everyone helping in the kitchen and BBQ.

Upcoming games are as follows:

14<sup>th</sup> February 2015 – Hyden vs Lake Grace @ Hyden

21<sup>st</sup> February 2015 – Lake Grace vs Karlgarin/Pingaring @ Lake Grace

7<sup>th</sup> March 2015 – Newdegate vs Lake Grace @ Newdegate

Lake Grace Cricket Club will be entering a team at the annual Bali Sixes International Tournament at Bali, over the Easter long weekend in April. The tournament is played over two days and then the finals are on day three. A great team/club bonding event that we are looking forward to. We will bring more details as they come to hand.

## Lakes Cricket Association Ladder

Team	P	W	L	M/A	Pts	%
Karlgarin/Pingaring	8	7	0	1	30	161
Lake Grace	9	3	3	3	18	101
Hyden	8	2	3	3	14	81
Newdegate	9	1	7	1	6	68

## WANTED

## RELIEF CLEANERS

Lake Grace District High School require relief Cleaning Staff.

Department of Education Police Clearance and a current Working With Children Card are required.

Interested parties should contact Michelle Lay at the School on 9865 1207.





# LAKE GRACE BUSINESS AFTER HOURS

@ Lake Grace Regional Art Space

Complimentary drinks and nibbles

Thursday 19 February 2015 / 5:30pm – 7:00pm

You are invited to network and be a part of a great interactive and proactive business association that is here to help grow your business through a professional and friendly business networking event in Lake Grace.

Already established in the central and eastern Wheatbelt, the WBN provides Wheatbelt small businesses with a **VOICE, PROMOTION, INFORMATION, NETWORKING** and **BUSINESS ADVICE**.

RSVP - Please Call or Text your details to;  
TANYA FRENCH, WBN Business Advisor  
M 0429 879 430 or  
ba@wheatbeltbusinessnetwork.com.au

**BUSINESS  
NETWORKING IN  
LAKE GRACE**

**OPEN TO ALL  
INDUSTRIES**

**RETAIL  
INDUSTRIAL  
FARMING**

**THINK LOCAL  
FIRST**

*Supported by*



This service is supported by



Small Business  
Development Corporation

# CLASSIFIEDS

## PUBLIC NOTICES

### Lady Doctor

Dr Linda Haines will be in Lake Grace on  
March 12th & 13th.

*Ring the Lake Grace Surgery for  
appointments on 9865 1208*

### WANTED

### Hay Bales

30 round bales of hay or 25  
large square bales  
Ph: 0427 653 048

### FOR SALE

### For Sale

2009 Mazda BT50 Boss  
3lt Turbo Diesel, air bags, single cab  
aluminium tray back, Long Range Fuel Tank,  
47,000km, Tow Bar, Roo Bar, 2 side tool  
boxes & water tanks  
\$20,000  
Phone Noel Giles 9865 1160



### PUBLIC NOTICE

#### NOTICE OF PUBLIC ADVERTISEMENT OF PLANNING PROPOSAL

*Planning and Development Act 2005*

Shire of Lake Grace

It is hereby notified for public information and comment that the Shire of Lake Grace has received an application for Council's planning consent to expand the existing feedlot on Lot 2540 Mallee Hill Road, South Newdegate from 500 head of cattle to a capacity of 1,500 head of cattle. Under the terms of the Shire's Local Planning Scheme No.4 the proposal requires advertising for public comment prior to Council determining the application.

Plans providing details of the proposal are available for inspection at the Shire's Administration Centre, No.1 Bishop Street, Lake Grace during office hours.

Submissions on the proposal may be made in writing and lodged with the Shire's Chief Executive Officer at PO Box 50, Lake Grace WA 6353 by no later than **4.00pm Friday 13 February 2015.**

Neville Hale  
**Chief Executive Officer**

### Lake Grace - Kukerin Hockey Club

General Meeting on Wednesday 18th February  
at the Kukerin Hotel 7pm

## CHURCH TIMES

### Anglican Church of Lake Grace

#### Sunday 15th February

Lake Grace 9:00am

#### Sunday 22nd February

Lake Grace 9:00am

Enquiries: Father Dave 0427 545 560  
Terry Gladish 9865 1022

### Lake Grace Catholic Church

#### Sunday 15th February

Ravensthorpe	8:30am
Varley	11am
Lake Grace	6pm

#### Sunday 22nd February

Lake Grace	8:00am
Kukerin	10am

For inquiries and request for home visitation,  
please contact Fr Gayan Thamel  
on 9865 1248.



# Community Clubs and Associations

Club / Association	Secretary / Contact	Contact Number	Contact Email
Artist Group	Tania Spencer	0429 041 063	spencertania@hotmail.com
Camera Club	Cheryl Chappell	08 9865 4058	rcchappell@bigpond.com
Craft Group	Meet at the CWA Building Saturdays from 11am onwards		
CWA	Elsie Bishop	08 9865 1632	ebishop@westnet.com.au
Early Learning Centre (Daycare)	Joanne Wells	08 9865 2568	
Development Assoc	Paula Carruthers	0499 616 070	ghpmcarr@bigpond.com
Men's Shed	Phil Clarke	0427 651 155	philclarke@westnet.com.au
Playgroup	Kelly Hawtin	0427 651 053	kelbels@westnet.com.au
School	Registrar	08 9865 1207	lakegrace.dhs@education.wa.edu.au
Sportsman's Club	Danielle Robertson	0427 676 025	jd.robertson@westnet.com.au
Toy Library	Amanda Trevenen	0488 216 601	amanda.harrower@hotmail.com
<b>Summer Sport</b>			
Lake Grace Tennis Club	Kristie Stanton	0427 973 206	kristiehobley@hotmail.com
Lake Grace Cricket Club	Rebecca Leigh	0417 923 284	rleigh80@yahoo.com.au
Lake Grace Bowling Club	Anna Strevett	0429 654 023	kastrevett@bigpond.com
Lake Grace Swimming Club	Anke Stoffberg	08 9865 2550	stoffberg@westnet.com.au

## Crisis Care Numbers

<b>Doctor's Surgery</b> - 9865 1208	<b>Electricity Faults</b> - 13 13 51
<b>Hospital</b> - 9890 2222	<b>Water Faults</b> - 13 13 75
<b>Ambulance/Fire/Police</b> - 000	<b>Directory Assistance</b> - 1223
<b>55 Central Men's Refuge</b> 9272 1333	<b>Family Helpline</b> 1800 643 000 / 9223 1111
<b>Sally Dickinson</b> 0427 192 155 <i>Southern AgCare Counselling</i>	<b>Kids Helpline</b> 1800 55 1800 www.kidshelp.com.au
<b>Poisons Information</b> 13 11 26	<b>Ngala</b> 9368 9368 www.ngala.com.au
<b>Crisis Care WA</b> - 9223 1111 / 1800 199 008 www.community.wa.gov.au	<b>Relationships Australia</b> <i>Fair Programme</i> 9336 2144 www.wa.relationships.com.au 1300 364 277
<b>Lifeline Australia</b> - 13 11 14 www.lifeline.org.au	<b>Beyond Blue</b> - 1300 22 4636 www.beyondblue.org.au
<b>Seniors Information Services</b> 9321 2133 www.cotawa.asn.au	<b>Citizens Advice Bureau</b> 9221 5711 www.cab.wa.com.au
<b>Family Court of WA</b> 9224 8222 / 1800 199 228 www.familycourt.wa.gov.au	<b>Youth Legal Service</b> 9202 1688 / 1800 199 006 www.youthlegalservice.inc.com.au
<b>Main Roads</b> - 138 138	

## Justices of the Peace

Colin Connolly	0427 858 066
Ron Dewson	9865 1224
Amanda Milton	0429 654 011
Geoff Sabourne	9865 1171

## Lake Grace Shire Councillors

Councillor	Telephone	Fax
Andrew Walker ( <i>President</i> )	9865 1241	9865 1921
Len Armstrong	9871 1334	9871 1317
Ross Chappell	9865 4058	9865 4051
Debrah Clarke	9865 4041	9865 4032
Jeanette de Landgraft	9838 9062	9838 9041
Steve Hunt	9865 1650 0427 651 585	
Allan Marshall	9865 3022	9865 3012
Dean Sinclair	9874 7045	9874 7005
Murray Stanton	9865 1329	9865 1223

# COMMUNITY CALENDAR

## February

Fri 13	Fish & Chips at the Sportsman's Club National Party representatives in Lk Grace Physio (Jenna M) in Lake Grace HACC Bus Outing	Sun 22	Pennant Tennis - Kukerin v Lake Grace Bowls - IZRR Ladies Fours
Sat 14	Craft Group at CWA 11am onwards Rubbish tip open Cricket - Hyden v Lake Grace Pennant Bowls - Newdegate v Lake Grace Steak Teas at the Sportsman's Club	Mon 23	Rubbish Collection & rubbish tip open Recycling Collection Lakes Link News Deadline
Sun 15	Rubbish tip open Bowls - League Fours Social Tennis	Tue 24	Chair Aerobics 10:45am at Village Hall SOYF Seniors Program-10am @ Shire Hall Men's Shed 9.30am-12 noon Building Surveyor in Lake Grace LGDHS Assembly
Mon 16	Rubbish Collection & rubbish tip open LGDHS P&C AGM	Wed 25	Rubbish tip open HACC Activity & Morning Tea 10-11:30am Tennis - Ladies Beginners Shire Council Meeting - 3pm Physio (Jenna M) in Lake Grace
Tue 17	Chair Aerobics 10:45am at Village Hall SOYF Seniors Program-10am @ Shire Hall Men's Shed 9.30am-12 noon Forklift Workshop	Thur 26	Lakes Link News Published
Wed 18	Rubbish tip open HACC Activity & Morning Tea 10-11:30am Tennis - Ladies Beginners Forklift Workshop Physio (Jenna M) in Lake Grace Farm Support Seminar (Newdegate)	<b>Coming Events</b> <i>27th February - HACC Activity Day</i> <i>27th February - Faction Swimming Carnival</i> <i>28th February - Live Music at the Pool</i> <i>28th February - National Red Balloon Day</i> <i>6th March - Barber of Seville - Westlink</i> <i>6th March - Driving Assessor in Lake Grace</i> <i>10th March - Meet &amp; Greet Landcare Officer</i> <i>12th March - Dr Linda Haines in Lake Grace</i> <i>13th March - Dr Linda Haines in Lake Grace</i> <i>16th March - P&amp;C Meeting</i> <i>17th March - Well Women's Clinic</i> <i>19th March - Interschool Swimming Carnival</i> <i>1st May - Megan Henry Book Launch at CRC</i>	
Thur 19	Tennis - Night Doubles Pizza Night at Sportsman's Club LGP Football Club AGM P&C WACCSO Training WBN Business Networking Event		
Fri 20	Fish & Chips at the Sportsman's Club Social Tennis - BBQ BYO Meat Physio (Jenna M) in Lake Grace Across the Lake Wines Grape Pick		
Sat 21	Rubbish tip open Craft Group at CWA 11am onwards Cricket - Lake Grace v Karl/Pingaring Pennant Bowls - LG v Kulin Bowls - IZRR Ladies Fours Steak Night at the Sportsman's Club		
Sun 22	Rubbish tip open		

### WANTED

Lake Grace Hospital is in need of **plant donations** for the secure garden area. If you have **Agapanthus** or **Day Lilies** to spare please call us on 9890 2222

	2		3		1		6	
9		3	5	2			4	
5							3	1
			9	5		7		4
		2	6		7	9		
7		1		8	3			
1	8							6
	7			4	8	3		5
	4		7		9		2	

### Sudoku

- ☐ The Sudoku grid of rows and columns is divided into individual 3x3 boxes.
- ☐ The aim of the game is to fill each row, column and 3x3 box with the numbers 1 to 9.
- ☐ You can't repeat numbers in a row, column or 3x3 box and you can't change the numbers already in squares.

4			2					3
	6				1	9		
5	3		4			1		
9	2							
		6				4		
							8	7
		4			9		7	1
		3	6				9	
1					2			5