

LAKE GRACE LINK NEWS

Produced at the
LAKE GRACE COMMUNITY RESOURCE CENTRE
School Place
PO Box 177 Lake Grace WA 6353
Ph (08) 9865 1470 Fax (08) 9865 1471
Email: lakegracecrc@westnet.com.au
ABN: 19 498 730 152
Website: www.lakegrace.crc.net.au

17th December 2015

\$1.20 inc GST

Vol 21 Issue 24

Santa Steals the Show...Again....

Suzanne Reeves



Above left: 'Elf' Craig Reeves is ready to deliver his very important passenger to the Visitor Centre lawn.



Above right: Santa is mobbed upon arrival.



Bottom right: Santa has a captive audience.

Santa stole the show at Late Night Shopping and by all accounts that was okay with everyone. It was the sixth Late Night Shopping event held in

Lake Grace and continues to be a wonderful opportunity for the community to come together.

Continued page 32

CONTENTS

Page 1,32	Santa Steals the Show	Page 19	Health Page
Page 4	Rifle Range Tower Gets a Facelift	Page 20	Kojonup Vet
Page 7	Op Shop Update	Page 21-27	Shire Pages
Page 8	Farewell Gayan	Page 30	School Ball Photos
Page 9	Ambulance Building Update	Page 31	Magnets - Do They Work?
Page 10	News from the Shed	Page 33,35	Bits & Pieces
Page 11	Men's Shed Annual Report	Page 37	Visitor's Centre - Christmas is Here
Page 12,13	Inspiring the Inspired - Emma Folz	Page 38,39	The Christmas Ham
Page 15	Insurance Tips	Page 46	Make Christmas Work
Page 16	School Page	Page 48	Harvest Report
Page 17	Lions Dedication to Henk Doelman	Page 52	Cricket Notes
Page 18,43	P&C President's Report	Page 53	The Wrong Bias

LAKES LINK NEWS 2016 Advertising Rates

	Non Profit Org	Members	Non Members
Classified	FREE	FREE	\$1 per line
Public Notice	FREE	N/A	N/A
1/8 page	FREE	FREE	\$12.50
1/4 Page	\$12.50	\$15.00	\$17.50
1/2 Page	\$20.00	\$25.00	\$30.00
Full Page	\$35.00	\$45.00	\$55.00
Insert (d/s)	\$30.00	\$30.00	\$40.00
Thank You's	FREE	FREE	FREE
Editorial	FREE	FREE	FREE
Colour	\$150.00	\$150.00	\$160.00
Conditions do apply.			

CRC Opening Hours 9:00am - 5pm

Closed from midday to
1pm for lunch when short staffed.

Deadlines & Editions

All articles, news & advertisements are to be submitted to the Lake Grace Community Resource Centre by 3pm on Monday of paper week.

Next Deadline

Monday 18th January

Next Edition

Thursday 21st January



Thanks

To the **very** dedicated **solo** team who volunteered his time to this edition of the Lakes Link News.

Dick Phillips

Elsie Bishop

Gwen Oliver

Thank you also to our many contributors of articles.

DISCLAIMER

- 1) No liability shall be incurred by the Lakes Link News by reason of any amendments to, or error or inaccuracy in, or the partial or total omission of an advertisement or by reason of delay or default or from any other cause whatsoever. If in the opinion of Lakes Link News the error clearly reduces the value of the advertisement and the advertiser notifies it to Lakes Link News within seven days of the publication date, then one correct insertion will be made without charge.
- 2) While the Lakes Link News aims to publish all material submitted, Lakes Link News reserves the right to refuse to publish or re-publish any contribution or advertisement without giving any reason.
- 3) No articles, letters or advertisements will be accepted which may appear to be defamatory or accusatory, or to favour one side in a legal dispute.
- 4) Lakes Link News reserves the right to shorten or otherwise amend any contribution other than advertisements.
- 5) The opinions, views and beliefs expressed in articles and other submissions to the Lakes Link News do not necessarily reflect the opinions, views or beliefs of the CRC staff or Committee.

345 copies printed and sold each fortnight

Editorial

- ☺ Thank you to those who supported Late Night Shopping, we've heard some very positive feedback and I'm sure this event will go ahead again in 2016!
- ☺ The CRC is changing their email, the current one (lakegrace@crc.net.au) will not be supported in the new year. Could everyone please change what they have in their address book to lakegracecrc@westnet.com.au
- ☺ The Driver Reviver Van will be out for Wednesday 23rd December and Thursday 24th December. If you would be willing to put in a few hours that would be appreciated. Please give me a call if you're willing to donate some time.
- ☺ Thank you to everyone who has sent their subscription forms in so promptly; we would appreciate having them all in by the New Year.
- ☺ The CRC has purchased a speaker/amplifier system. Once we have our insurance sorted we will have this available for hire. Cost will be \$60 per day and there will be a security deposit.
- ☺ Our Friday craft group is technically taking a hiatus but as we said to our regulars you are more than welcome to come along, utilise the facilities and continue doing the patchwork (or something else if the patchwork is driving you crazy)...we'll just be short of expert tuition.
- ☺ Thank you to our advertisers, our contributors and our readers for your support throughout 2015; the paper wouldn't be as good as it is without your support.
- ☺ I do believe I could have started a bidding war with the colour pages this fortnight. We only have the capacity to print colour on the cover and one other double sided page. The reason for this is the Lakes Link printer is mono (black & white) only and we insert the colour pages; this is limited to the number of drawers in the Lakes Link printer. The Lakes Link printer is a high speed printer. If we printed through our everyday colour/mono photocopier it would probably die. For example this edition of 56 pages, would be 19,320 prints and would take 772.8 minutes or 12.88 hours to print. Fresh news would soon become old news. A standard copier generally prints at 25 copies per minutes, our high speed one does this at 90 copies per minute. If you want colour advertising, be quick....very, very quick!
- ☺ The CRC will close at midday on both Christmas Eve and New Years Eve. We will open between Christmas and New Year but please note over January the CRC will be closed more often than not between midday and 1pm.
- ☺ Last but not least we wish everyone a Merry Christmas and Happy New Year. Drive Safe.

Suzanne Reeves



The Committee, Management & Staff of the
Lake Grace Sportsman's Club
wish all our patrons

a very Merry Christmas and Happy New Year.

Thank you for your support in 2015 and please join us for

**Business Christmas Drinks on
Friday 18th December 2015
from 6:30pm onwards**

Fish & Chips will not be available

Steak Teas will only be available on the
9th January 2016, or unless otherwise
advertised.

Steak Teas and Pizza nights will
resume in February 2016.

Friday night Can Draw will continue
throughout the summer months.

Christmas Hours

Closed Christmas Day
and New Years Day

Open Boxing Day and
New Years Eve



Rifle Range Radio Tower Gets a Facelift

Amanda Milton. Photos Alison Dines.

If you saw a figure scaling the radio tower on Rifle Range Hill on the 3rd December 2015 you were not seeing things. The Rigger (guy up the tower) was Darryl Church from D & J Communications in Manjimup, and he had the task of climbing the tower to repair the ambulance radio aerial and aerial cable.

The Rifle Range tower was formally controlled by CBH, in a lease agreement with previous landholders. In 2005 when CBH ceased using the tower, they wanted to move the asset forward, and the tower came under the control of the WA Police. As the ambulance radio equipment is also located on the tower a memorandum of understanding between the WA Police and St John Ambulance WA Ltd allowed the ambulance radio to remain on the tower. The WA Police currently lease the site from Simon and Louise Trevenen.

So why the guy up the tower? In a long saga taking nearly 12 years the ambulance radio has had a very chequered history of working. I won't bore you with the details, but to say that the 25 year old (original) base station was not working the best, the battery backup system kept failing, and the aerial cable that came loose from the tower all conspired for the radio not to work.

We tried replacing components at the tower base and

even changed aerials (to ones not flapping in the wind), but could not get the tower to work despite spending over \$8,000. The main problem was the base station and the need for a new aerial.

In November 2014 the St John Ambulance Lake Grace Sub Centre applied for a Lotterywest grant to fix the problem. The grant round is specific to St John Ambulance and is an internal, competitive round of grants for equipment, and vehicle replacement. The Lake Grace Sub Centre grant application was successful for the amount of \$10,385.

So why the Rigger up the tower? Ordering a new base station for the tower is relatively easy. You put in an order, the company makes the unit, you pay the \$6,066.50 and the unit is installed in the little building at the bottom of the tower. But if you need to install a new aerial, the only way is up. So up it was. Mr Church meticulously checked the tower footing, the tower support guy wires, donned protective equipment and climbing gear and up he went.

The tower is a triangle shape with each side being approximately 20cm. The shape does not change from top to bottom and it gives very little foothold. Darryl's first job was to remove dis-used equipment from the tower. He did this by grinding off the fixings, and bit by bit, lowering the equipment to the ground by rope, with the assistance of Lee Roberts from the St John Ambulance WA Ltd Radio Workshops.

Continued page 34

Photos: Darryl Church climbing the tower, at left he's barely a blip on the radar.



What's Happening?

- Congratulations to Rhiannon (nee Wallace) and John Carmody on the arrival of their first child on 12th December in Esperance. Felicity Nanette was 8lb 3oz and 50cm long and is the first grandchild for Donald and Nanette Wallace. *Rhiannon, John and Felicity pictured below.*



- All the best to Pingaring as they celebrate their 90th Christmas Tree this weekend. Hope it all goes well for you.
- Farewell to those who are leaving Lake Grace; Tracie Buntrock and Jessie Walton as well as Simone Fairbrother and family and Sheila Moodley.

Thank You

"The Stewart Family of Buniche would like to convey their sincere gratitude to those members of the Pingaring, Lake Grace and Newdegate Communities who attended the fire on their property on the 27th of November 2015. We really appreciate the time taken in an especially busy time period to make sure that the fire remained contained. With kind regards, Andrew and Amanda Stewart."

Happy Birthday



18th December	Savannah Trevenen
19th December	Juanita O'Neill Aidan Pelham Bella Callope
20th December	Des Pelham Trenton Medlen Jaycob Trevenen
21st December	Clem Bennett
23rd December	Melissa Cugley
24th December	Liam Fyfe Lily Stubberfield
25th December	Pat O'Neill Latisha McGlinn Winter Korosec
26th December	Anna Taylor Esme Lane Jaimee Withnell
27th December	Lindsay Slarke
28th December	Elise Carruthers
30th December	Jasmine Cugley
31st December	Elizabeth Spencer
1st January	Bevan Taylor Eva Bairstow
5th January	Lenore Gladish Josh Giles Tate Naisbitt
6th January	Shane Reynolds
7th January	Brayden Reynolds Thomas Dunham
8th January	Rick de Vree
9th January	Melanie Naisbitt
10th January	Reuben Smith
12th January	Paige Nenke
13th January	Shannon Smith Shelley Stanton
15th January	Darren Clifford
16th January	Ryleigh Willock
17th January	Abbey Trawinski
19th January	Melissa Clifford
21st January	Morgan Chatfield Natasha Strevett Stella Dines Dot Morgan

Anniversaries



- 2nd January - Gennie & Steve Curtin
19th January - Belinda & Pat O'Neill
19th January - Lisa & Grant O'Neill

Lake Grace Weather

- Terry Gladish



December Extremes

Highest Monthly Rainfall	93.4	2011
New record - 94.8 - 2015		
Lowest Monthly Rainfall	0	1953
Highest Number of Rain days	10	2011
Lowest Number of Rain days	0	1953
Highest Daily Rainfall	64.3	20/12/1913
New record - 75.4 - 6/12/2015		

Date	Min	Max	Rain
2/12	10.9	32.8	
3/12	18.9	31.4	
4/12	15.0	25.5	9.0
5/12	10.8	17.6	7.0
6/12	10.9	21.1	75.4
7/12	12.9	21.7	3.2
8/12	8.9	26.1	
9/12	13.9	26.4	0.2
10/12	10.8	24.9	
11/12	11.1	28.2	
12/12	13.6	33.5	
13/12	13.9	28.7	
14/12	12.8	31.3	
15/12	14.0	37.3	
16/12	16.3		

Wheatbelt Bushcare workshops

FREE!

Healthy bushland is a valuable farm asset that can be managed to benefit both biodiversity and land productivity.

Workshops will cover:

- ▶ major factors affecting bushland health and biodiversity in the Wheatbelt
- ▶ how improving bushland health benefits both landholders and community
- ▶ management options for boosting environmental biodiversity & your property's sustainability plus, information on applying for our Bushcare Grants.

Wongan Hills – 10 Feb 2016, Wongan Hills CRC | **Narembeen** – 24 Feb 2016, Narembeen Rec Centre
Northam – 9 Mar 2016, Bridgeley Centre | **Brookton** – 12 Mar 2016, Brookton WB Eva Pavillion

Time: 10am - 12pm, with lunch & refreshments. Registration from 9.30am.

www.wheatbeltnrm.org.au/bushcare

Register NOW!

Call Terri Jones on (08) 9670 3122
tjones@wheatbeltnrm.org.au

More From the Lake Grace Op Shop

Annie Slarke President, Lake Grace CWA Branch

We have begun setting up the Op Shop in the former Uniting Church and plan to be open in January 2016. Funds raised will be used to run the Op Shop and contribute to Activ Industries, Great Southern. This organisation helps people with disabilities from across the Great Southern by providing employment and housing with carers.

Activ Industries runs an industrial workshop where employees make vertical blinds and pallets, overlock carpets and print and collate brochures. Volunteers run other thrift shops in Katanning and Albany with the funds raised helping to buy such items as air conditioning for homes and machines for the industrial workshop.

We will be open this Friday 18 December from 10.00 to 3.00 for donations. Look out for public notices for other donation days. Once operating, we will receive donations at the Shop on the days we are open. Please do not leave items at the church.

YES PLEASE

Clean clothing
Small household goods (cutlery, crockery, curtains, sheets, blankets, manchester)
Small furniture
Jewellery and fashion items
Books
Toys

All goods must be clean, in good condition and saleable

NO THANK YOU

Old clothing
Electrical items
Baby capsules or booster seats
Bike or motorbike helmets
Large furniture (at this stage)
Junk

If you wish to be on the volunteer roster please contact Michelle Slarke (9865 1878) or Irene McGlinn (9865 1148).

We are still seeking donations of shop furniture. Please contact Michelle or Irene if you can help with any of the following:

Clothes hangers
Clothing racks
Shelving
Shop fixtures and counters
Cash register
Iron
Ironing board
Mirrors

Lawn Mowing & Gardening Services

e: pksgardening1@gmail.com

- Mowing
- Reticulation
- Garden design
- Soil testing
- Pruning
- General garden maintenance

PLUS LOTS MORE!!

Peter Kain (PK) or Deb

p: 0427 020 561



Wishing the Lake Grace Community Peace, Joy and Happiness at Christmas and throughout the New Year



Members of CWA

Samuganimi – So Long To You All

Fr Gayan Thamel

Six years have gone and it is like yesterday. It's time say farewell to Lake Grace and to all of you. I will always treasure my stay in Lake Grace parish which includes, Kukerin, Newdegate, Varley, Lake King, Ravensthorpe and Hopetoun communities. I have enjoyed my stay here immensely and leave with so many happy memories.

During my stay- in Lake Grace and other parts of the parish- I had the opportunity to meet many of you on various occasions and in various situations. Your welcome and support through all these years is greatly appreciated.

When I came to Lake Grace from Margaret River, it was a bit of a shock- small communities and long distance driving- but I quickly learned to enjoy the farming communities and long distance driving. It gave me the opportunity to reflect and meet many farming families in the region. I enjoyed visiting rural properties from Jerdacuttup to Kukerin including the middle of 'no mans' land between Lake King and Ravensthorpe. Thank you for all the hospitality I received during these visits. I experienced first hand, the changing of seasons and the fascinating beautiful country side. My favourite part of the drive was the 10km through the salt lakes of Lake King.

I learnt many things after coming to Lake Grace parish. I always wanted to learn to ride horses. I was blessed to have a family who offered me their horse and helped me to learn to ride- not to mention that I had my first fall and was flown in the RFDS- it was a memorable experience and I came to know first hand that you need to ask for a sick bag when you are really feeling sick! I came to Lake Grace with no understanding of farming. I had the opportunity to get into headers and tractors and learn about them. The church crop made me aware how the farmers carry out their farming day in day out.

Visiting some of the schools in the parish was enjoyable especially during Christmas and Easter presentations and other social gatherings.

Men's Shed Battery Drive

The Lake Grace Community Men's Shed is continuing with their battery drive. This is an ongoing revenue raising project which will contribute to the running of the Shed.

Batteries can be left at Phil Clarke's shed or you can contact Phil on 0427 651 155 or Allan Duckworth on 0427 651 567 if you require them to be picked up. Thank you for your ongoing support.

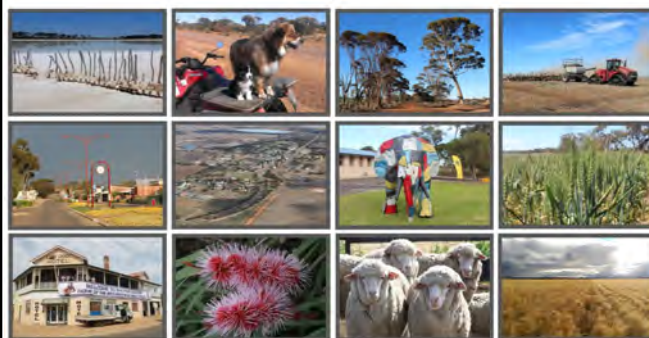
Joining St John Ambulance was a highlight for me. It gave me valuable life skills and many opportunities to assist people. We all worked as a team and went through happy and sad moments that came with the job. Thank you to all my colleagues for all your support and welcome I have received for the past five years,

Working with other Christian churches was another highlight of my time in Lake Grace -Centenary celebrations, ANZAC services and other combined church services. These were occasions when I met many of you. One of the memorable trips was going with Rev Dave Russell (Anglican Minister) to do the Eyre Highway ministry. We drove to the Border Village and visited and talked to people in roadhouses and at cattle stations along the way. In one place in a roadhouse, I celebrated the Mass with a couple and Dave, and had lunch with them. It was a memorable experience.

I leave this place with so many memories. I would like to thank all the parishioners (Kukerin to Hopetoun), all of you and many others I met along the way. I will be moving to Pinjarra parish. If you ever happen to be in Pinjarra, feel free to drop in for a cuppa.

**Lake Grace 2016 calendars
are available from the
Community Resource Centre
\$20 each.**

*Personalise a calendar with your own
photos (\$25 each); photos must be
landscape and of good quality.*



Lake Grace 2016 calendar

New Ambulance Building Update – Fully Funded and Underway

Amanda Milton

Over the last 2 months the new ambulance building to be constructed on Lot 501 Stubbs Street in Lake Grace continued to gain momentum.

We have secured additional funding donations from Narrogin Sub Centre \$10,000, Kulin Sub Centre \$10,000, Toodyay Sub Centre \$10,000 and Margaret River Sub Centre \$10,000. There is a significant pledge from a community group yet to be finalised for announcement, and with those funds, we are pleased to say the project is FULLY FUNDED.

On Friday night the 11th December 2015 prior to the Ambulance Sundowner Christmas Drinks on the new block, we asked Father Gayan Thamel to formally bless the block. Gayan did a great job of personalising the blessing to suit the event. We take this opportunity to celebrate Gayan's commitment to our community over the last 6 years and thank him for his 5 years of service as a Volunteer Ambulance Officer.

Over the next 6 – 8 weeks you will see site works underway, starting with the services that need to be installed or re-located before the building pad preparation can begin.

The Water Corporation application has been finalised. Water Corporation need to bring water from the mains on the North side of the road, under the road to the block as a new supply. Additionally there are blue flags running north south through the block and this marks the current location of the water that supplies the Sportsman's Club. We need to trench and re-route that water supply around the block but the Sportsman's Club water meter will remain at the front of the new Ambulance block as a cost saving measure.

Telstra has changed supply models in the last year, and the company Mainstream will be installing the telecommunications. The yellow flags running up Stubbs Street from Memorial drive, through the ambulance block, and over to the Sportsman's Club show where the existing Telecommunication line runs. This line will be relocated and upgraded across the front of the ambulance block and up the eastern side of the block to the Sportsman's Club.

The Western Power application has been a little more problematic, but we hope to have the application re-submitted this week after a failure to meet a requirement. The power will be coming from the power pole that has the transformer on it, one pole to the west of the block. The new supply will be underground.

The Tender documents for a builder are near completion. The delay has been at our end as we juggle harvest and this process. It is so important to have all the details correct so that the those submitting tenders know exactly what is required. Thirteen builders have been approached for this project, from the very small to the very large, and eleven have indicated



Father Gayan blesses the block for the new St John Ambulance Sub Centre.

a desire to tender for the project. The tender will be an invited tender list and the assessment of the tenders will be as per the St John Ambulance WA Ltd tender policy.

Once the services have been installed or re-located we will begin the excavation and sand pad installation process. The timing is a little rubbery because of the services being shifted, but we hope to be calling for a community sand cart in the second half of January 2016.

Practical completion of the building is planned for September 2016. The outside works such as kerbing, asphalt, gardens etc will occur after this. We are aiming to have the project completed in 2016 to coincide with our 70th birthday as a ambulance service in Lake Grace.

Community Sand Cart: - If you are able to help with this sand cart please register your interest by contacting Amanda Milton 0429 654 011. We will compile a list of trucks to assist and it allows us the opportunity to communicate with you directly.

A Word from the Shed - Lake Grace Community Men's Shed

Phil Clarke

The AGM has come and gone with all Committee positions being filled. Please see the President's report for details on the year's activities.

Ten members made the road trip to the Hopetoun Men's Shed (known as "men in sheds"). Our first stop was at the Ravensthorpe IGA for morning tea and a cup of coffee, and then onto Hopetoun where the hospitality was second to none. We were given an overview on how they financed and set up their shed, which was really interesting. A big thank you to Hopetoun Men's Shed for the lunch they put on for us, it was great.

Before leaving we went to Bill Pike's shed to view his magnificent array of old tractors all done up. Thanks Bill. To conclude the day, Ross Murray and his family gave us a general tour of Hopetoun before we headed for home.

Our new shed is progressing well with the floor sealed and painted, and the water and sewerage connections going in. Retaining walls and paths are next to be done. We are at the stage now, where our machinery and equipment can start to be set up.

Thank you to all our members for their help in getting the shed up and running and if you would like to call in and have a cup of tea and a chat or just a general run down on what is happening at the shed, feel free to join us on Tuesday mornings from 9:00am at the Design and Technology room, at the school.



Lake Grace and Hopetoun Men's Shed members dine together. Photo Allan Zweck.

IRONSTONE FABRICATIONS

Ben, Annie and Family

wish all our clients a

Fabulous Christmas

and a Happy New Year.



Lake Grace Men's Shed Annual Report

Phil Clarke - President

The last 12 months has seen our new Shed in Bennett Street steadily progress. I would like to thank the Committee, our members, the Shire of Lake Grace and the Community for their ongoing support. The 2014/2015 Committee was made up of the following people: Alan Duckworth, Robert Carruthers, Ross Murray, Laurie Dickins, John DeVree, Pat O'Neill, Phil Clarke and Walter Perry. Thanks guys for all your assistance and support over the past 12 months, a great deal has been achieved. I would like to make special mention of Robert Carruthers, who as our Treasurer has done a great job managing our books, especially in navigating through our GST and tax implications. Thank you also must go to Anke Stoffberg who has assisted Robert with the accounting and tax requirements. Many thanks to you both, your efforts are greatly appreciated.

The 2014/2015 year has been another strong year for membership. Currently we have 104 financial members with around 25 active members who attend the shed regularly. Shed attendance has been relatively strong throughout the year, and it is good to see members coming along each week. We encourage the Community to please come along on Tuesday mornings if you would like a coffee and a chat or if you have a project you want to get involved with.

2014/2015 has seen us involved in many small projects for the school and the community, along with our own projects which have included MDF trees, wishing wells, horse swings and pallet dismantling for the wood to be used in projects.

We have also had a successful year with our grant applications. We were successful in obtaining the full amount of the Lotterywest grant we applied for being \$70,000 for the new shed purchase and erection, sight works, concrete pad, wiring and fit out. We were also successful in securing grants from Australian Men's Shed Association (AMSA) Federal Funding for \$2,500 which was a contribution towards a metal band saw and a compound mitre saw, and also \$1,650 from the AMSA for the purchase of a defibrillator.

I would like to thank those involved with the donation of \$1,800 as a result of the winding up of the Festival Committee. I would also like to say a special thanks to our community and Shed members for your donations and contributions. They have added greatly to our cause.

At this point I must thank Stephanie Clarke-Lloyd for all the work she has done with the writing, typing, computer and office work and applying for the grants. Thanks Steph.

2014/2015 has seen the building of our new Shed at 25 Bennett Street behind the Ambulance Depot. The shed is up, floor has been poured, the insulation is in, the

wiring done and the floor is ready for sanding and painting. Retaining walls, disabled entrance/exit ramp, paving and storm water drains are next to be done.

Our main income for the Shed for this financial year has been from the batteries which the community has generously donated to us. This fundraiser we hope will be ongoing in the year to come, as it helps us greatly to meet our financial obligations. I would like to thank everyone who has donated batteries and brought them in. There are approximately 30 tonnes of batteries that will be sold off during this year depending on price.

Once again, we have operated out of the D & T room at the School this year, and have been made very welcome by all the office staff and teachers. We have very much enjoyed being at the school and being part of the school community. Thank you to Ashley Mottershead for allowing us to use this space.

Finally, to everyone who has been involved in the Men's Shed, thank you, and we look forward to an equally rewarding and successful 2015/2016.



Inspiring the Inspired

Emma Folz

Emma Folz (nee Marshall) is the Patient care manager of the Paediatric Intensive Care Unit, Alberta Children's Hospital in Calgary, Canada. This is the Christmas speech Emma made to her team. Emma's parents, Allan and Rita Marshall would like to share this with you.

It's been a tough couple of weeks...and for some of us it may have even felt like the toughest couple of weeks. No matter when or where the unexpected happens, we are always there. 24- 7. 365 days of the year. And we're ready. It can be scary. It might seem impossible some days. But that's okay, because our jobs are not easy ones.

I couldn't be more proud to be part of a team, who, no matter the circumstances, makes every child's life the best it can possibly be, given their circumstances.

You can't underestimate how much you mean to the children and the families we serve. Every family will remember the exact date and time their lives changed. And you were there for them. In that moment, you quickly changed from being a stranger, to the most important person in their life. We- us in this room and

those dedicated professionals, who are holding down the fort in our unit, right now- have to play every hand we're dealt, every day, no matter how bleak. Folding, is simply not an option for us.

We're also privileged. We're privileged to participate in the joy and the sadness, the smiles and the tears, the triumphs and the tragedies. We're privileged to be members of a team who support each other, and takes care of each other, with the same compassion, resilience and strength that we show our patients and families every day.

And you know what? We're REALLY good at what we do. This year, in terms of patient outcomes, VPS data shows our Paediatric Intensive Care Unit (PICU) as one of the top 3 PICU's in North America. We have been benchmarked across Canada, and are nationally recognized as a PICU for efficient use of resources and the appropriate use of staff and supplies, based on the number of admissions we get. We have a national reputation for such a challenging, yet positive, and healthy workplace culture. This reputation has resulted in health care professionals across the country,



Shop 5, Lakeway Shopping Centre,
22/23 Stubbs Street, LAKE GRACE

FASHION FOR THE SALT OF THE EARTH

*We have heaps of gorgeous dresses for Xmas
and lots of stocking fillers.*



If you are unsure of what to get we have Gift Vouchers.



*Dot, Vicki, Carol and Julie would like to thank you
for your support throughout the year
and wish you a safe and happy Xmas and New Year.*

Please send in your email address to sandnsalt@bigpond.com to register for emails advising of new arrivals or register in store.

Layby available on all new stock and non sale items—Layby is three months
Appro on new stock and non sale items Appro - town - overnight only
Out of town - next trip back into town or three days, whichever is first.

Inspiring the Inspired (cont.)

knocking on our door. By example, our Unit has one of the best nursing retention rates in the province.

Now, let's talk about Simon. Our fearless leader. Where's Simon? Come up here for a minute. No, you can't make a Christmas party speech tonight, you gave that privilege away to Meagan.

Let me tell you about my experience with Simon. His vision and passion for our patients' outcomes and the health of our team, has made our workplace a cutting edge PICU- internationally. Through his leadership and innovation, we've become a benchmark for other PICU's around the world. Whether it's how we carried out our ECLS program or how we now use data to show our successes and where we need to improve, Simon is always pushing us to do better. Under his leadership, I can't wait to see what challenges and successes we'll face in 2016.

You guys know Kramer? From Seinfeld? Simon often arrives at my door in a manner that I liken to how Kramer arrives at Seinfeld's door- it's a flurry of arms waving, head spinning and that excitement in his face. That excitement is important, because it usually comes with his latest and 'even more brilliant than the last' idea to make our Unit, team and ultimately, our patients better. It's then our job to work with all of you to execute it within the limitations of our environment.

Through Simon and this team- all of you- I have learned that anything is possible when- even if it seems impossible- there's a determination and focus to do what's right.

To our health care professional team (that's everyone here and, again, those dedicated folks back in the PICU tonight), I have been privileged to work closely with you this year. We have grown together in size, in strength, unity and the ability to solve complex and difficult problems. Your ability to communicate differing opinions, while being highly respectful of one another is a great strength, on which we've built over the past year.

Thank you for your steadfast confidence, guidance and achievements.

To our loved ones and friends. Thank you for supporting us so we can do this fine work. Thank you for passing us Kleenex and pouring our wine. Thank you for giving us high 5's as we pass the parenting/pet/home duty batons between shifts. Who make dinner, so we can nap before a night shift. Who adjust dates to celebrate holidays because we're working. Thank you for allowing us to talk about work when we need to. Not talk about work when we need to. And for telling us to stop talking about work when you need us to.

You're the best.

So, in closing- a toast...to everyone who's a part of the PICU team. and country need that extra care. When that unexpected happens. No matter where or when it does. Remember, we're a piece of that place where those kids need to be. Thank you for choosing to be a part of that. I am incredibly proud to be part of that with you.

Cheers.

Lake Grace Library Holiday Times

OPEN Tuesdays and Thursdays
9am—noon 12:30pm—5pm

OPEN Tuesday 22nd December

CLOSED 24th, 29th and 31st December

OPEN 5th, 7th, 12th, 14th, 19th and 21st January

Normal hours start Monday 24th January 2016

Closed Tuesday 26th January (Australia Day)



Tupperware®

I would like to wish my customers and everyone a very Merry Christmas and a Happy & Safe New Year.

Thank you to all those that have supported my Tupperware business over the years. I look forward to partying with you in 2016.

Missy Clifford

Tupperware Demonstrator

Lake Grace

9865 2324

0407 190 177

missdazz@hotmail.com

Dogs In Hot Cars

Media Release

You can help vulnerable animals this summer by taking the pledge for summer dog safety.

Dogs dying in hot cars is a serious issue for animals in Western Australia. Last summer alone, RSPCA WA received hundreds of calls from concerned community members who spotted dogs trapped in cars.

Because dogs don't lose heat by sweating, they can become dangerously hot in just six minutes and even

die from heat exhaustion. The worst thing about it is all these tragic losses are totally avoidable.

You can help spread the message of summer safety by taking the pledge on justsixminutes.com.au to never leave your dog in a car on a hot day.

If you ever encounter a dog locked in a hot car, stay with the car and call RSPCA WA on 1300 278 3589, the police on 131 444, or the local ranger.

You could lose your
best mate in just
6 MINUTES

Lions Christmas Cakes

Will be available soon. Small & Large.

Will be available at
usual outlets.

Call Wally on
0448 795 070.



ABN: 72 616 138 172 EC: 010433

**Electrical contractors servicing
Wheatbelt and Great Southern.**

Conversion of overhead services to underground, shed fit outs, house rewiring and new installation wiring. Ditch witch available. Industrial and rural power specialists. Air conditioning heating installation, re-gassing and maintenance.

**Call Steve on 0409 681 909 or
Alistair on 0427 339 472
for a free quote.**

Email: info@tigersparkelectrical.com.au
Website: www.tigersparkelectrical.com.au

OBORNE CONCRETE



Chemical Sheds * Boomspray Pads
House Pads * Silo Pads * Driveways
Super Sheds * Workshops

Tip truck and bobcat also available
for any type of site works.

Small and Large Loads
Grant Osborne - Lake Grace
Ph/fax: (08) 9865 1367
Mobile: 0427 651 367

Holiday Insurance Tips

Advertorial

This time of year our thoughts begin to turn to the coming holiday season.

A lot of us will be away from home for some of that time, so it is worth taking the time to make sure your valuables are protected while you are away. Most, but not all, insurance policies will provide some cover for your contents which you take with you on your break, so check with your insurer to make sure you do have cover away from home.

If you're going to be travelling overseas, having travel insurance provides great peace of mind. Unfortunate events occur all the time - injuries or illness, theft of handbags and wallets. A holiday is quickly spoiled if you don't have an insurance provider to turn to. Make sure your policy will cover you for delays in arrival and departure – the recent volcano disruptions for people travelling to and from Bali were a great inconvenience and expense for people travelling without adequate insurance cover. Always take copies of your travel documents, including your insurance paperwork and leave them back home with a reliable person. That way if

you lose your documents, you can quickly get all the reference numbers you will need when making a claim and getting replacement passports and visas.

If your holiday is within Australia and you have flights and tours booked, travel insurance will provide cover if you are unable to travel for valid reasons (illness, injury or death in the family). Any delays in arrival and departure which are beyond your control will also be covered.

If family and friends are staying with you and will be driving your vehicle, just let your insurer know so you can make sure you're not liable for an unexpected excess payment in the event of an accident.

Justin and Kerry wish you all a Merry Christmas and a wonderful 2016.

If you have any insurance queries during the holiday season, please contact Justin or Kerry on 9865 3500.



Elders
Insurance

**Insurance for
locals by locals**

Thank you for recommending us to your family and friends



Australian Business Insurer of the Year 2013

CCL Hardware

8 Stubbs St, Lake Grace WA 6353
Phone: 08 9865 1104

***Merry Xmas And
Thankyou For Your Support
In 2015***

Best Wishes For The New Year





HOME
TIMBER AND HARDWARE

The proper hardware store

Christmas Hours

We would also like to advise
we will be closed from:
4:30pm 24-12-12

Re-opening: 8:30am 29-12-15





Lake Grace District High School News

Year 10 Graduation

Yr 9/10 Dinner



Graduating Students 2015

Kyle Harradine
Clayton Clunie
Demi-Rae Major
Brodie Richman
Casey Pinney (absent)



Kyle, Clayton, Mrs Mottershead, Demi-Rae and Brodie.



What an amazing transformation of our undercover area.

Waiters and waitresses for the night,
Oakley, Jared, Whitney, Hannah, Charlee,
Cooper, Poch and Latisha.



Abbey Trawinski, Brad Clunie, Kyle Harradine,
Ethan Allen-Hancock, Mrs Mottershead, Clayton
Clunie, Emily Younger, Demi-Rae Major, Caylah
Vlasich and Brodie Richman

Lions Dedication for Henk Doelman

Neville Moulden. Image Arthur Slarke.

The Lake Grace Lions held a dedication at the Lions Remembrance Wall on Sunday 6th December 2015 to unveil a plaque for Henk Doelman.

Henk was an active member of Lions from 1972 until his passing this year on 5th September, a total of 43 years of service to the community.

Three of Henk's four daughters Cobi, Anna and Rita were present for the ceremony. They joined friends and Lions to honour Henk and celebrate his work for the Lions Club over the decades. President Arthur Slarke compiled the tribute.

The Lions then went to the Village Hall

Three of Henk's daughters were present at the dedication ceremony. L to R: Rita Marshall, Cobi Stanton and Anna Strevett.



for a Christmas get together with our members and guests to finish off a successful day.

Dongolocking Plumbing & Gas *Malcolm Roberts*

M: 0429 232 987
F: 08 9863 7250
E: malcolmroberts@westnet.com.au

PL8240

GF014549



**Where a Royal
Flush is better
than a
Full House**



**Pool & Spa
Mobile Service**

Poolwise Living is looking to be a more regular fixture in the Lake Grace Community and surrounding areas.

Our Pool & Spa Mobile Service division has recently gained 6 clients in Lake Grace and we would like to increase that number to help keep the cost to a minimum.

We have a dedicated service division with qualified technicians waiting to help with all your swimming pool needs. We offer a range of services from:

- Regular or One-Off Maintenance
- Green Pool Cleans
- Equipment Sales, Repairs & Installations
- Sand Changes & Filter Servicing

For more information or to join our growing list of Lake Grace Clients, contact Jill on 9276 1074 or email her at psms@poolwiseliving.com.au

WE ARE HERE TO HELP

**Call now to book a
service before Christmas**

LGDHS P&C President's Report 2015

Vynka Lay

It has been a very busy and productive year for the Lake Grace District High School Parents and Citizens Association, with many improvements made to our meetings, and lots of fundraising activities. We have also tried to return awareness to the core objectives of the P&C which are: to generate cooperation between parents, teachers, students and members of the community; to assist in the provision of resources, facilities and amenities for the school; and to foster community interest in educational matters.

We began the year with a WACSSO (Western Australian Council of State School Organisation) training session, and by conducting a P&C Parent Survey, both of which highlighted the need for us to improve our meeting protocols, and to better inform the community of our objectives and activities. The improvements made have been amazing. Meetings have become more structured, reports are available with the agenda prior to the meeting, and meeting times are close to our aim of one hour.

Continued page 43



Some of our reliable and hard working P&C committee:
Back: Simone Fairbrother, Misha Clarke (Footy Tickets), Missy Clifford (Uniform & Canteen), Delys Giles (Treasurer)
Front: Shelley Stanton (Secretary), Ian Bailey, Vynka Lay (President)

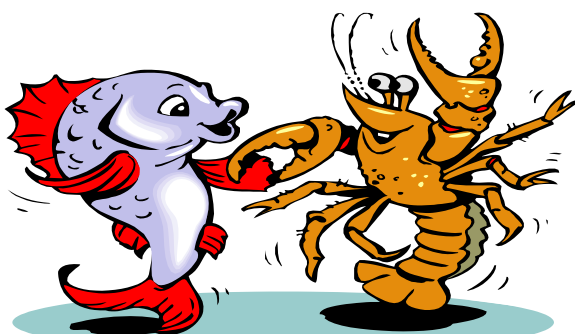
Marron For The Dinner Table

Priced according to weight

Place your orders now for all your Christmas needs

Pre orders appreciated

For details contact Ray Bushby on 0400 524 048



Fisheries License
No. 1730

LAKE GRACE HOSPITAL – Multi Purpose Service
 providing **24 hour Emergency Health Care Services**
 and **Community Care Services** to Lake Grace and the surrounding district

Contact details = Telephone: **9890 2222** Fax: **9890 2202**

***Merry Christmas and a
 Happy, Healthy
 and Safe New Year***

From all the staff at the Lake Grace Hospital



Immunisations:

Available at the Lake Grace and Newdegate
 Child Health Clinic

Appointments are required

Contact Elizabeth Trevenen
 Child Health Nurse
 on ph: 9890 2246



HACC & MPS Activity Programs:

Chair Aerobics

Every Tuesday @ 10.45am
 At the Lakes Village Hall

Exercises for people with limited mobility



Morning Tea & Activity

Hospital Activity Room every Wednesday
 Time: **10am—11.30am**

23rd December—Puzzles

30th December—Pamper

6th January – Sing-a-long

13th January—Bingo

20th January—Pamper

27th January—Puzzles

All welcome to join in!



Bus Outing

Friday 8th January 2016 (approx. 9.30am to
 11.30am) Call the hospital to book

Call 9890 2222 during office hours

to book or get further information about
 HACC and Hospital services

Thank You!

To the small band of volunteers
 who have helped out over the year
 - including drivers for HACC and
 hospital outings, client transport,
 meals on wheels deliveries and
 any others who lend a hand.

**Your assistance is very much
 appreciated!**

*If you have time to assist with the
 Meals On Wheels deliveries in 2016,
 please call us to discuss your
 availability for the roster.*

Please use the **intercom**
outside the main doors
 when visiting the hospital to call
 for a staff member to assist you.

Please bring your
Medicare Card
 for all visits to the hospital

Kojonup Veterinary Hospital

Advertorial

The Kojonup Veterinary Hospital has been established for a number of years and we have been fortunate enough to service clients both in the immediate district and surrounding areas. To help our existing clients more easily access Veterinary care and to meet some new faces, our team opened a branch practice in Katanning just over 6 months ago.

Since opening we have seen a number of familiar faces and a met quite a few new ones! We are excited to provide the same service as offered in Kojonup to meet the needs of both large and small animals with the same level of commitment and care. Being located in the centre of Katanning provides a much closer access to Veterinary services.

We are equipped to offer a full on farm service for domestic livestock. We are also able to see horses on property for routine and emergency procedures.

We have a friendly local nursing team that is based in Katanning and are more than happy to assist with any queries. We perform routine surgeries and dental work for companion animals. Animals requiring hospitalisation, major surgery or x-rays are transferred

to our fully equipped hospital in Kojonup. We provide a hospital transfer service or clients are welcome to take animals to Kojonup if they wish.

We are open from Tuesday through to Friday from 8.30 am until 4.30pm. Our Kojonup practice is open on all weekdays and from 9-12 on Saturday mornings.

The team at Katanning Veterinary Clinic would like to thank all our lovely clients both new and existing, for making us feel so welcome and for supporting our new clinic in Katanning.

We would also like to let everyone know that our usual after-hours emergency service will not be available from midday on Christmas Eve, until 8.30am Monday 4th January 2016.

If you have a Veterinary Emergency please call 98 311 666 and you will be able to get details of the closest emergency service.

We wish everyone the best for the festive season and a happy, healthy and prosperous New Year. We look forward to an exciting year in 2016 and can't wait to watch our practice continue to grow!



Rabobank

Merry Xmas & a Happy New Year to All

We wish to advise that the Lake Grace Branch will be closed between Xmas & New Year 29th, 30th & 31st December.

**From Rabobank Lake Grace
Darren, Vynka, Nicola & Delys**



Shire of Lake Grace

Community News

PO Box 50, Lake Grace WA 6353 Ph: (08) 9890 2500 Fax: (08) 9890 2599

Email: shire@lakegrace.wa.gov.au*CEO's Corner***Medical Practice**

The former locum, Dr Coxhead, finished in Lake Grace on 9th December. A new locum, Dr John Taran, commenced on 10th December but will finish up on 23rd December. It is possible there will not be a doctor in Lake Grace over the Christmas/New Year period.

The company engaged to recruit a permanent doctor did show a potential candidate around the shire last week and has another interested doctor visiting Lake Grace on Friday. Here's hoping!

Customer Service Officer Position

Council's Customer Service Officer, Ms Tracie Buntrock, has resigned after almost three years in the position; with effect from Friday 11th December. Tracie was popular amongst her colleagues who held a morning tea on the Thursday to say farewell. She is wished all the best at her new location.

Tracie's position has been advertised and applications will be received up until 18th December 2015.

Christmas/New Year Emergency Arrangements

The Shire Office will be closed from 1pm 24th December and will reopen on Monday 4th January 2016.

In the event of an emergency during the Christmas closure please contact the following personnel:

Lake Grace - Andrew Bowker (0488 551 244) or Gordon Franks (0475 580 471)

Newdegate, Lake King & Varley - Doug Whiting (0427 651 127)

Bushfire Contact - Brad Watson (Chief Fire Control Officer) (0427 906 441)

If you require emergency assistance from the Police, Fire Brigade or Ambulance please dial 000.

Shire Inspection

I accompanied the Manager of Infrastructure around a large proportion (but not all) of the shire on 7th December. We visited the Newdegate Public Toilets, the Newdegate CBH site, where the entry road needs some attention, and the ILU's (Independent Living Units) under construction alongside the Newdegate Hall. We also inspected the Newdegate Refuse Site.

We went through Lake King to the Mt Madden CBH Site to inspect some new accommodation to determine whether the construction had fulfilled the conditions imposed on the project. We visited the Dunn Rock Tennis Club - and will arrange for the damaged super six

fence to be removed. We also inspected the Lake King Refuse Site. Rubbish is a major problem for all local authorities and with Lake Grace having four tip sites; two of which must be attended when open, the problem is not going to be solved any time soon!

Congratulations – Nat Fyfe

I'm sure Lake Grace residents are proud of their home grown lad adding the Western Australian – RAC Sport Star of the Year for 2015 title to his Brownlow Medal. I have not met Nat and I am an Eagle's supporter but I do admire the way he plays and add my congratulations on his achievements. He is a wonderful ambassador for Lake Grace.

Christmas Greetings

On behalf of Council and the Shire staff I extend Christmas Greetings and a safe and healthy New Year to all shire residents. Let's start the New Year off without any tragedies! Drive carefully and arrive at your destination on time. Don't spoil the festive season for family and friends!

Peter Bradbrook
Acting Chief Executive Officer

Farewell to Tracie Buntrock,

Thank you for the time you have been the face of the Shire with your welcoming cheerfulness to all internal and external customers, you will be missed.

Shire Councillors, Management and staff wish you the best for your move to the city and future endeavours.

**Farewell to Chamila our Technical Officer who will be returning to her family in Perth.**

Farewell to Tracey who has cleaned the Shire office and the Lake Grace Public Toilets for the last few months.

Farewell and thank you to Danielle for her contribution to the Shire office during her short stay.

Shire Councillors, Management and staff thank you and extend our best for your future endeavours.





Shire of Lake Grace Community News

PO Box 50, Lake Grace WA 6353 | Ph: (08) 9890 2500 | Fax: (08) 9890 2599 | Email: shire@lakegrace.wa.gov.au

Office Opening Hours

Monday - Tuesday - Wednesday - Friday

8.30am - 4.30pm

Thursday 8.30am- 4.00pm

Staff can be contacted by phone between 8am - 5pm.

Licensing Opening Hours

Monday, Tuesday and Wednesday 8.30am - 4.15pm

Thursday and Friday 8.30am - 4.00pm

Tip Opening Hours

Lake Grace

Monday & Wednesday 9am - 2pm

Saturday & Sunday 9am - 4pm

Newdegate

Wednesday 9am - 1pm

Saturday 9am - 1pm

Lake King & Varley

Open Every Day

Waste & Recycling Pick up Dates

Household Waste Collection is weekly and collected each Monday for Lake Grace, Newdegate, Lake King & Varley.

Recycling is fortnightly and alternates between Lake Grace & Newdegate. See below for the upcoming recycling collection dates.

Lake Grace	Newdegate
28 December	21 December
11 January	4 January

Please Note: There is no kerbside recycling collection service in Lake King or Varley.

For more information on Waste Management visit the Shire's website.



Check out our website
www.lakegrace.wa.gov.au

Driving Assessor

The Practical Driving Assessor will be at the Shire of Lake Grace Office on:

Friday - 8 January 2016 - 'C' Class licences only

Friday - February 2016 to be confirmed

Please contact the Shire's Customer Service Officer for an appointment.

You can now book your PDA online. For more information visit www.transport.wa.gov.au

Building Surveyor

Shire Building Surveyor, Josiah Farrell will be available at the Shire Office on the following dates:

Tuesday 12 January 2016

Wednesday 27 January 2016

To make an appointment please contact Josiah on ☎0438 811 944.

Harvest Ban Hotline

Useful telephone numbers:

- For emergencies dial 000
- Total Fire Ban information 1800 709 355
- Shire of Lake Grace Harvest Ban Information 9487 7191

Please contact the Shire Office on 9890 2500 if you wish to be notified of harvest bans using SMS.

Ordinary Council Meeting

The next Ordinary Council Meeting will be held:

3.00 pm 24 February 2016

Location: Council Chambers

1 Bishop St Lake Grace

Members of the public welcome.

A minimum of 15 minutes is set aside for public questions time, giving members of the public an opportunity to ask questions relating to Shire activities.



Check out our Facebook page
www.facebook.com/ShireofLakeGrace

Issuing Tax Invoices

Voluntary Tax invoice standards have been developed in consultation with small business, in response to feedback about their frustration with inconsistent tax invoice and invoice formats.

In addition to the legal requirements, there are some common-sense requirements of an invoice which the Tax Office sets out as "voluntary standards".

The standards will help achieve greater consistency in the set out of tax invoices and invoices, making it easier for recipients to locate the necessary information for tax purposes.

1. the identity of the supplier, such as the business name at the top
2. the ABN of the supplier at the top, near the supplier's identity
3. the date of issue of the tax invoice at the top, on the right hand side
4. that the document is intended as a tax invoice, such as including the words 'tax invoice' at the top
5. an **invoice number** shown prominently alongside the words 'tax invoice'
6. the purchaser's identity, such as name, or ABN, for goods or services costing \$1,000 or more
7. a unit description of each good or service supplied, including quantities – it is optional to include item numbers
8. an indication of which goods or services don't include GST by showing a 'zero' in the GST amount column
9. an indication of which goods or services include GST by showing the GST amount in the GST payable column, and
10. the GST exclusive price, the GST amount and the GST inclusive price for each item, together with the totals for these, vertically in the bottom right hand corner.

Associations Clubs WA Conference

Designed especially for Western Australian Associations, NFP's and Community Groups involving grass roots sports the ACWAC Conference has been developed to deliver practical, common sense and low cost effective strategies to combat the day to day issues and membership retention,

- finance and financial planning
 - leadership issues
 - auditing and
 - understanding their obligations being an association
 - the role of boards and committees
- are some of the key topics to be discussed. For more information go to <http://www.acwac.com.au>

Monday 2nd May 2016 & Tuesday 3rd May 2016

Rendezvous Hotel Perth Scarborough
148 The Esplanade Scarborough, WA 6019

Christmas Tip Hours

Christmas Lake Grace and Newdegate tips will be open the usual times over Christmas and New Year.

Lake Grace

Monday & Wednesday 9am - 2pm
Saturday & Sunday 9am - 4pm

Newdegate

Wednesday 9am - 1pm
Saturday 9am - 1pm



Register for Shire SMS

To receive:

- Harvest Ban Notices
- Newdegate Pool SMS
- Lake Grace Pool SMS messages

Contact the Shire of Lake Grace on (08) 9890 2500.

Mobile Phone Black Spots

Recently, Rick Wilson announced that \$53.84 million will be invested in O'Connor to build or upgrade 60 mobile phone towers.

This is a significant announcement for the electorate as anywhere in regional WA the lack of mobile phone coverage is a huge issue.

Of the 177 blackspots nominated by local communities, 133 will receive coverage from one of the 60 new or upgraded base stations.

The first of the new towers will start construction before the end of 2015 and the rollout will continue for three years.

If you would like to find out if a new tower will be located near you, check out the national map: <http://nationalmap.gov.au/>.

Also announced was \$60 million for round two of the programme. The locations that were not selected in round one will automatically be considered in round two.

If you would like to nominate a blackspot for round two of the programme, email mobilecoverage@communications.gov.au.

Black spot nominations for Round 2 of the Programme close on **31 December** and can be made online at www.communications.gov.au/blackspots

Newdegate Pool News

I hope everyone is now finally enjoying some warmer weather. Over the last fortnight we have had Interm swimming lessons for both Newdegate and Lake King Primary Schools, although the weather wasn't the best and the water was a tad cold, all the students participated without too much complaining; as for the instructors well that's a whole other story!!

Fast approaching is our Vac Swim program, late enrolments are scheduled to take place **3pm FRIDAY 18th December 2015** followed by the swimming staff in -service. Please note we do not have free swim during Vac Swim lessons. All Children not in lessons are to be supervised by an adult. Please note that stage changes take priority over late enrolments and that there is no guarantee the centre will have classes available. We will endeavour to do our best to accommodate everyone.



**Newdegate Primary
School has sport
scheduled at the pool
Thursday 17 December**

No entry to the public during this time.

WESTERN POWER has scheduled maintenance in Newdegate from 7am - 5pm on that day, this will affect the pool usage as we operate on a key system which requires power.

The battery backup only lasts approximately 2hrs. Please have your phone on you as you may get stuck in the facility, if this happens you may contact Bridget. She may or may not come and let you out. The pool will be monitored closely, if the CHL levels drop too low the facility will be closed until the power is restored, the pumps are back in circulation and the levels are at the requirements.

We will run another pool induction course – Date to be confirmed.

A Bronze requal course will be held in Newdegate after Vac Swim lessons are completed, will keep people posted via the Newdegate CRC
webpage <http://newdegate.crc.net.au>



Please remember to....
Always shut the gates,
Be sun smart...Slip, Slop, Slap...
Pack away when you have finished,
Supervise your children
No Glass, No Alcohol, No Smoking
Stay Safe....No Backflips!!!

Lake Grace Swimming Pool

Many people have been asking about the VACSWIM late enrolments for Lake Grace, a date is yet to be set for the Lake Grace program which is running from Tuesday 29 December - Friday 9 January. Please stay in contact with the Lake Grace pool managers or keep an eye on the VACSWIM web page det.wa.edu.au

With a massive 75mm of rain falling over the town on the weekend of the 5th December the pool balance tank was pushed close to its maximum capacity filling to just under the rim of the tank.



This pool season the RLSSA WAW program (Watch Around Water) in collaboration with all pool managers around the state are targeting 'screen time' at the pool. The LG pool managers are encouraging parents, carer's, guardians and anyone supervising children to forgo the ipad, phone or digital device for the short amount of time your child is in the water. Don't let your latest 'Facebook



update' risk your child's safety. Remember
YOUR CHILD YOUR FOCUS.



Lake Grace Swimming Pool Open Hours 2015/2016

Early morning swim - Tues - Fri 5.30 - 7.00am

(not available on public holidays)

Day swim - Mon - Fri 12.00 - 6.00pm
Sat - Sun 12.00 - 6.00pm

Pool hours may vary with extreme weather.

Christmas operating hours

25 December	Closed
26 December	12.00 - 6.00pm
27 December	12.00 - 6.00pm
28 December	12.00 - 6.00pm
1 January	12.00 - 6.00pm

To be confirmed at the Council meeting held on Tuesday 15 December 2015.

Keep informed with our Facebook page:
Lake Grace Swimming Pool.





Shire of Lake Grace Community News

PO Box 50, Lake Grace WA 6353 | Ph: (08) 9890 2500 | Fax: (08) 9890 2599 | Email: shire@lakegrace.wa.gov.au

Shire Emergency Contacts

During Christmas Closure

Wednesday 24 December 2015 to

Sunday 3 January 2016

In the event of an emergency during the Christmas closure, please telephone:

Lake Grace

Andrew Bowker.....0488 551 244

Gordon Franks.....0475 580 471

Newdegate, Lake King & Varley

Doug Whiting.....0427 651 127

Bushfire Contact

Brad Watson (Chief Fire Control Officer)

0427 906 441



If you require emergency assistance from the Police, Fire Brigade or Ambulance please dial **000**.

Christmas & New Year

Shire Office Opening Hours

Closed 1:00pm, Thursday 24 December 2015

Opens 8:30am Monday 4 January 2016

Please Note: Licensing services will not be available during this time.

Licensing renewals and transactions can be made by mail or via the internet at www.transport.wa.gov.au.

For help or information call 13 11 56

*We Wish you a Merry Christmas
and a Happy New Year*
From Councillors, Management and Staff

Immediate Start

As all cleaning positions in Lake Grace Townsite are currently unfilled the Shire of Lake Grace urgently require persons who are committed to their Community and have the passion to provide a safe and healthy environment for all users of Shire facilities ensuring they are cleaned and maintained to the required standard.

LAKE GRACE TOWNSITE CLEANER— PART-TIME (UP TO 38 HOURS PER FORTNIGHT)

To obtain an application package for this position please contact Lee-Anne Trevenen at the Shire of Lake Grace on ☎9890 2500 or email cfa@lakegrace.wa.gov.au

Applications to be marked 'Confidential' and addressed to;

Chief Executive Officer, Shire of Lake Grace, PO Box 50 Lake Grace WA 6353

Applications for the position close 4.00pm Monday 4th January 2016

The Shire of Lake Grace is an equal opportunity employer



26 January 2016 AUSTRALIA DAY

Lake Grace

Hosted by: Lake Grace Lions Club

When: Tuesday 26th January 2016

Where: Lake Grace Swimming Pool **Time:** 7:30am

Details: Free BBQ breakfast BYO plates, cutlery & mugs.

Presentation of Australia Day Citizenship Awards

Australian Citizenship Ceremony

Australian Citizenship Affirmation



Newdegate

Hosted by: Gateway Uniting Church

When: Tuesday 26th January 2016

Where: Pioneer Park **Time:** 8:30am

Details: Free BBQ breakfast with live music

Presentation of Australia Day Citizenship Awards

Australian Citizenship Ceremony

Australian Citizenship Affirmation



Australia Day

Lake King

Hosted by: Lake King Tavern

When: Tuesday 26th January 2016

Where: behind the Tavern **Time:** 11:30am

Details: Free BBQ



Varley

Hosted by: Varley Progress Association

When: Tuesday 26th January 2016

Where: Varley Sports Pavilion **Time:** 1:00pm

Details: Free BBQ lunch

Presentation of Australia Day Citizenship Awards

Australian Citizenship Affirmation



Celebrate

SHIRE OF LAKE GRACE

ADOPTION OF LOCAL LAWS



The Council of the Shire of Lake Grace resolved on 18 November 2015 to adopt the following local laws:

- Activities on Thoroughfares and Public Places and Trading Amendment Local Law 2015;
- Bush Fire Brigades Amendment Local Law 2015;
- Cemeteries Amendment Local Law 2015;
- Dogs Amendment Local Law 2015;
- Extractive Industries Amendment Local Law 2015;
- Fencing Amendment Local Law 2015; and
- Pest Plants Repeal Local Law 2015.

The purpose and effect of the local laws are as follows:

Activities on Thoroughfares and Public Places and Trading Amendment Local Law 2015

Purpose: To amend the local law relating to activities in thoroughfares and public places and trading.

Effect: Some activities are prohibited; some activities are permitted only under permit in thoroughfares and public places. The local law also enables a local government to require house numbering and the erection of fences in certain circumstances.

Bush Fire Brigades Amendment Local Law 2015

Purpose: To amend the provisions about the organisation, establishment, maintenance and equipment of bush fire brigades.

Effect: To align the existing local law with changes in law and operational practice.

Cemeteries Amendment Local Law 2015

Purpose: To amend the local law to provide for the orderly management of the public cemeteries in the Shire of Lake Grace.

Effect: To ensure compliance by all persons engaged in the administration of the cemetery, burying deceased in the cemetery, or otherwise providing services to or making use of the cemetery.

Dogs Amendment Local Law 2015

Purpose: To amend the local law to make provisions about the impounding of dogs, to control the number of dogs that can be kept on premises and the manner of keeping those dogs.

Effect: To extend the control over dogs which exist under the *Dog Act 1976*.

Extractive Industries Amendment Local Law 2015

Purpose: To amend the local law to establish requirements and conditions with which extractive industries within the district must comply;

Effect: To provide for the regulation, control and management of extractive industries.

Fencing Amendment Local Law 2015

Purpose: To amend the local law to provide a sufficient fence for purposes of the *Dividing Fences Act 1961* and to state the materials to be used and safety measures to be taken for some types of fencing.

Effect: Augments the compliance requirements of the *Local Government (Miscellaneous Provisions) Act 1960* with respect to the erection and maintenance of fencing.

Pest Plants Repeal Local Law 2015

Purpose: To repeal the local law requiring landowners to control and eradicate declared pest plants on their properties.

Effect: To remove control on the spread of declared pest plants.

A copy of the proposed local laws may be inspected at or obtained from the Shire of Lake Grace, 1 Bishop Street, Lake Grace 6353 during business hours or via the website

www.lakegrace.wa.gov.au.

The local laws were gazetted in the *Government Gazette* on 15 December 2015 and will come into effect on 29 December 2015.

Neville Hale
CHIEF EXECUTIVE OFFICER

Lake Grace Community
Resource Centre has a
new email address

lakegracecrc@westnet.com.au



OPEN
most days

Wednesday – Sunday
Thursdays

10am – 4pm
1pm-4pm

Come & enjoy a tea/coffee with homemade cake
Bookings not essential, but appreciated.

Phone: 0447 651 418

Greenline

QUALITY PRODUCTS - QUALITY SERVICE

Present this ad and receive a 10% discount on all products on the showroom floor! (Offer Ends 31-12-2015)



Call into your local Greenline Ag store for all your Stihl needs.



Stihl MS171 - Bar length 14"/35cm **\$399.00**



Stihl MS181 - Bar length 16"/40cm **\$449.00**



Stihl MS291 - Bar length 18"/45cm **\$1159.00**



Stihl MS391 - Bar length 20"/50cm **\$1449.00**



Silvan Smoothflo Spotpak 200 Litre Sprayer
SUMMER SPECIAL \$695 inc gst



John Deere Walk Behind Mowers
JS28 - \$449.00 JS38 - \$499 JS48 - \$599.00

Tel: (08) 9865 1100

Fax: (08) 9865 1391

Email: lakegraceadmin@greenlineag.com.au

Greenline

QUALITY PRODUCTS - QUALITY SERVICE

\$995



John Deere 12V HPX Ride-on
Childrens Gator for ages 3+

\$269



John Deere Battery operated Gator 6V
Kids Ride-on with Water Bazookas

\$89.95



John Deere Sit-N-Scoot with
Lights and Sound

\$115



John Deere 6510R Sit-N-Scoot

\$399



Rolly Junior John Deere Tractor with
Frontloader and Rear Excavator



John Deere 4020 Tractor and
Truck both with flashing lights and
sound



John Deere S670 Combine with
lights and sound \$119.00



MERRY CHRISTMAS



John Deere Mega Hauling Playset
\$49.95



John Deere Deluxe Vehicle Gift Set
\$59.00

Present this ad and receive a 10% discount on all products on the showroom floor! (Offer Ends 31-12-2015)

Tel: (08) 9865 1100

Fax: (08) 9865 1391

Email: lakegraceadmin@greenlineag.com.au

2015 School Balls



Left: Beth Curtin with her partner Simon Bishop from Newdegate at her Santa Maria ball. Beth's ball was held on Saturday 7th February at the Hyatt Regency in Perth.



Above: Peter Downey attending his Wesley College ball with partner Kelly Hopkinson. The ball was held on the 20th August at Challenge Stadium.



Right: Reece Lay with his partner Laura Lionetti attending the Great Southern Grammar ball. The ball was held on 7th March at the Princess Royal Sailing Club Albany.



Left: Phoebe Robertson with partner Nash Kirk at the Como Secondary College Ball. The ball was held on Friday the 20th March at the Esplanade in Fremantle.

Does Magnetic Therapy Work?

by Elizabeth Palermo, Associate Editor of Live Science. An edited extract

Magnetic therapy is an alternative medical practice that uses static (i.e. unmoving) magnets to alleviate pain and other health concerns. So-called therapeutic magnets are typically integrated into bracelets, rings, or shoe inserts, though therapeutic magnetic mattresses and clothing are also on the market.

How it's supposed to work:

Magnetic therapy dates back at least 2,000 years, according to a report by New York University's Langone Medical Center. Folk healers in Europe and Asia are believed to have used magnets to try to treat a variety of ailments. These healers may have believed that magnets could actually draw disease from the body.

Today, many companies sell therapeutic magnets and claim that a small magnet inside of a bracelet or other device helps increase blood flow to the area of the body where the device is worn. This increased blood flow is then said to help tissues heal faster.

Those who believe in the efficacy of magnetic therapy often cite the ability of static magnets to alter a person's bioenergetic fields, or biofields, which are

energy fields that purportedly surround and penetrate the human body. Practitioners of certain alternative medical techniques may refer to this alleged bioenergetic field as life force, chi or energy flow. Some believe that such fields can be manipulated — sometimes using magnets — to treat illness or injury.

One positive result often cited by magnetic therapy advocates is a 1997 study from Baylor College of Medicine, titled "Response of pain to static magnetic fields in postpolio patients: a double-blind pilot study."

This study, led by Carlos Vallbona, reported "significant and prompt relief of pain in postpolio subjects" through the use of a 300-500 gauss magnet (about 10 times stronger than a refrigerator magnet) for 45 minutes on the affected area of 50 patients in pain.

ADVERTISEMENT

RICK WILSON MP

Federal Member for O'CONNOR

*Proudly supporting
communities across
O'Connor*

CONTACT RICK

Shop 5, The Link Shopping Centre,
St Emilie Way, Albany WA 6330

Ph. 9842 2777

E. rick.wilson.mp@aph.gov.au

Facebook. [RickWilsonMP](#)

www.rickwilson.com.au



Authorised by Rick Wilson MP, Shop 5, The Link Shopping Centre,
St Emilie Way, Albany WA 6330.

Lake Grace Transport

Twice weekly freight service to and from Perth

- ♦ Secure depot in Perth to drop freight off
- ♦ For all your wool and general freight
- ♦ Forklift to load wool on farm
- ♦ Accreditation to load at Midland Brick
- ♦ We also cart bulk grain, fertilizer, lime, gypsum and firewood

Your friendly local operator - nothing is a problem, only too happy to be of service.

For all your freight needs call:

Rex on 0429 649 021 or
Darren on 0428 651 339



Santa Steals the Show...Again... (cont.)

Over 20 stalls lined the main street as the event kicked off around 5pm. Stalls ranged from baked goods, craft, beauty products, wine, jewellery, art, pet products, toys, woodwork and the opportunity to have a family photograph taken.

Food, which was supplied by the Visitors Centre and the Gym Club, was well received with very little left over. Around 175 meals were sold on the night.

Although sales for other items on the night weren't huge, this didn't appear to be too much of a disappointment as there was plenty of positive feedback regarding the atmosphere.

Santa's arrival in Nick Maalouf's golf cart was met with a frenzied response from those children who were old enough to recognise a gift opportunity, but there were some moments of shyness and bewilderment from the younger ones. Lollies being thrown by Santa as he was being driven were quickly pounced on by the older children.

The weather Gods were smiling on the evening (thank you); the ambient conditions and Ian

Bailey's background music created a wonderful atmosphere. Painter Ken Pillinger arrived just before 7pm to play a few tunes on his trumpet, this was very well received.

Thank you to everyone who played a part in bringing the evening together; if you would like to be a part of this event in 2016 we would love to hear from you. The aim is to keep the event low cost with not too much work by any one person; with the focus on bringing people together.

A big thank you to our stallholders, businesses who stayed open, those who attended, the Shire for organising and funding the closing of the main street, Santa for making time in his very busy schedule, Nick Maalouf for providing the chariot (and trusting the elf to drive it), the elf for his assistance, Peter Stoffberg for setting up/taking down the bouncy castle and installing the hay bales; Amanda Trevenen for her many jobs well done and unbridled enthusiasm and the Artspace for the generous loan of their facilities.

MEMBER SPECIALS

AT YOUR SPORTSMAN'S CLUB

Emu Export

Corona

Heineken

Budweiser

Available for a limited time while
stocks last

Open to financial members



GOT ODDMENTS ON FARM?

Spencer Wools are looking to purchase all your oddments currently on farm.

Let us give you a price and clean your shed up.

West Coast Wools are offering
their brokering services.

Clips on Consignment.

Fast Testing - 72 hr turnaround from delivery.

Can organise delivery to
Katanning or Bibra Lake.

To arrange an appointment
please contact

Stephen Chappell

0427 651 338 or

Darren Spencer

0428 651 339



Bits & Pieces

Well here we are, nearing the end of year 2015 and this being the final edition of The Lakes Link News for this year. To finish off the year let's continue with last edition's theme, that of the younger ones.

Even though we get a lot of happiness from raising our offspring, have you ever wondered what the cost is in achieving this? While surfing the internet I came across the following article which may give you and I an indication of where all your hard earned money goes while raising your little ones. Read on...

The Price of Children

I have repeatedly seen the breakdown of the cost of raising a child, but this is the first time I have seen the rewards listed this way. It's nice. The government recently calculated the cost of raising a child from birth to 18 and came up with \$160,140 for a middle income family. Talk about a shock! That doesn't even touch college tuition. But \$160,140 isn't so bad if you break it down. It translates into:

- \$8,896.66 a year,
- \$741.3 month, or \$171.08 a week,
- that's a mere \$24.24 a day!
- just over a dollar an hour.

Still, you might think the best financial advice is don't have children if you want to be "rich." Actually, it is just the opposite.

What do you get for your \$160,140?

- Naming rights. First, middle, and last!
- Glimpses of God every day.
- Giggles under the covers every night.
- More love than your heart can hold.
- Butterfly kisses and velcro hugs.
- Endless wonder over rocks, ants, clouds, and warm cookies.
- A hand to hold, usually covered with jelly or chocolate.
- A partner for blowing bubbles and flying kites
- Someone to laugh yourself silly with, no matter what the boss said or how your stocks performed that day.

For \$160,140, you never have to grow up. You get to:

- finger-paint,
- carve pumpkins,
- play hide-and-seek,
- catch lightning bugs, and
- never stop believing in Santa Claus.

You have an excuse to:

- keep reading the Adventures of Piglet and Pooh,
- watch Saturday morning cartoons,
- go to Disney movies, and
- wish on stars.

You get to frame rainbows, hearts, and flowers under refrigerator magnets and collect spray painted noodle wreaths for Christmas, hand prints set in clay for Mother's Day, and cards with backward letters for Father's Day.

For \$160,140, there is no greater bang for your buck. You get to be a hero just for:

- retrieving a Frisbee off the garage roof,
- taking the training wheels off a bike,
- removing a splinter,
- filling a wading pool,
- coaxing a lump of gum out of hair, and
- coaching a baseball team that never wins but always gets treated to ice cream regardless.
- You get a front row seat to history to witness the:
 - first step,
 - first word
 - first bra
 - first date, and
 - first time behind the wheel.

You get to be immortal. You get another branch added to your family tree and, if you're lucky, a long list of limbs in your obituary called grandchildren and great grandchildren. You get an education in psychology, nursing, criminal justice, communications, and human sexuality that no college can match.

In the eyes of a child, you rank right up there under God. You have all the power to heal a boo-boo, scare away the monsters under the bed, patch a broken heart, police a slumber party, ground them forever, and love them without limits.

So . . . one day they will, like you, love without counting the cost. That is quite a deal for the price!!!!!!
Love & enjoy your children & grandchildren!!!!!!

And let's finish the year off with the funnies to put you in the mood for Christmas.

Who Says Men Don't Remember?

A couple were Christmas shopping. The shopping centre was packed and as the wife walked around she was surprised to discover that her husband was nowhere to be seen.

She was quite upset because they had a lot to do and hence, she became so worried that she called him on her mobile phone to ask him where he was. In a quiet voice he said, "Do you remember the jewellers we went into about five years ago, where you fell in love with that diamond necklace that we couldn't afford, and I told you that I would get it for you one day?"

The wife choked up and started to cry and said, "Yes I do remember that shop."

He replied, "Well, I'm in the pub next door!"

The Pet Fish

A man went to a pet store to get a fish. He noticed a strange, colourful fish and asked the owner what the fish was called. "That's a Parrot-Fish," said the owner. "It sings like a bird." The man looked doubtful so the owner told him he could bring the fish back if he wasn't satisfied.

A week later the man returned to the store to return the fish saying, "You were right. The fish can sing. But,

Continued page 35

Rifle Range Radio Tower Gets a Facelift (cont.)

The next step was to dis-connect and lower the dysfunctional and detached aerial cable. Then came the testing to see if aerial cables already on the tower could be used to install the new aerial. Once a donor cable was identified the new aerial could be lifted into place and installed on the tower. The new aerial is one that looks like an "old school" can opener and points directly west.

Once the equipment was installed up the tower the "downstairs" equipment in the building could be tested. With the all clear being given, Darryl could come down the tower.

Once installed, the equipment underwent testing for quality of sound, and distance of capability. The new equipment passed the tests with flying colours. The new base station and repeater should reach about 50 – 60km in all directions depending on terrain and weather conditions.

So why does an ambulance service need a VHF (Very high frequency) radio system when we have access to mobile phones? The answer is that the coverage of the telephone service does not have a big enough footprint, for the service that the ambulance needs. Ambulances are installed with the best telephone aerials, but they are all dependent on mobile phone coverage. The

radio system allows the ambulance service to call back to the radio handset in the hospital, to give and receive vital life saving information when the phone signal does not allow. The radio also has battery backup, and is a system independent of the phone system in emergency situations such as bushfire or floods. All ambulances can use the radio to communicate with the Lake Grace Hospital. We use the radios to communicate with other hospitals on different channels when we are transporting patients to different locations.

Our thanks to Darryl Church for being the spider up the tower, also thanks to Lee Roberts for being Darryl's ground support, and for the installation of the base station, and the re-instatement of the hospital radio. Our thanks to Trevenen Building for repairing the building to make it weather tight. Thankyou to Simon and Louise Trevenen for continuing to support having the tower on their property. Our thanks to Ray Pullen the Manager of the St John Radio Workshop for co-ordinating the new equipment, and our very special thank you to Lotterywest for providing the funding to finally fix the problem.

Over and out.

Painting



Reg. # 4709
Domestic, Commercial, Industrial,

Farm Painting Speciality

Clean, Precise & Quality work

Local references available

For free quotation and booking

Call Mick

0419 701 332

Bits & Pieces *(cont.)*

he's horribly off-key and it is just too difficult to tuna fish."

Why...?

Why did the kid throw butter out of the window?
He wanted to see butterfly.

Gardening Solutions

An old man lived alone. He wanted to dig his potato garden but it was very hard work. Unfortunately his only son, who would have helped him, was in prison for bank robbery. The old man wrote a letter to his son and mentioned his predicament.

Shortly, he received this reply: "FOR HEAVENS SAKE, Dad, don't dig up the entire garden, that's where I buried the money." At 4am the next morning a dozen police showed up and dug the entire garden without finding any money.

Confused, the old man wrote another note to his son telling him what had happened and asking him what to do next. His son's reply was, "Now plant your potatoes, Dad. It's the best I could do from here."

Christmas Is Arriving Soon

A teacher was asking her class about the Christmas Story.

"What was the name of Jesus' mother?"

The hands shot up around the room.

"Mary!" answered the girl confidently.

"Yes, that's right," responded the teacher.

"What was the name of Jesus' father?"

A young boy was almost falling off his chair stretching his hand into the air.

"Yes Toby?"

"Verge," he answered with a smile.

"Verge?" asked the puzzled teacher.

"Of course," said Toby, "It was the Verge 'n Mary who had the baby Jesus."

And that only leaves me to thank you all for the kind and encouraging comments you have given me throughout the year. I wish you all a very Merry Christmas and a safe and prosperous New Year in 2016.



Keep laughing...

Life is too short to take too seriously!

K

HENDERSON'S EARTHMOVING

9397 5882

0428 915 528

Specialising in dam de-silting, new roaded catchments, existing catchment upgrades, general grader hire and grain cartage.

Ring Max Henderson 0428 915 528

Puzzles & Stuff

Some words from the 3/12/2015 edition of Boggle

Adversely
Delayers
Slavered
Dealers
Delvers
Evaders
Layered
Relayed
Reveals
Several
Slavery
Alders
Deaves
Elders
Erased
Evader
Lavers
Leader
Leased
Levers
Reaved
Redyes
Resale
Reseal

Salved
Seared
Served
Slaved
Slayer
Sleave
Velars
Versed
Alder
Dales
Delay
Delve
Earls
Eased
Elves
Erase
Evade
Every
Laser
Lyres
Raved
Reeds
Seedy
Slave

9	1	4	5	3	6	2	7	8
6	5	7	8	2	9	3	1	4
2	3	8	7	4	1	6	9	5
4	2	5	9	8	7	1	6	3
3	8	9	1	6	4	7	5	2
1	7	6	2	5	3	4	8	9
5	9	3	6	1	2	8	4	7
8	4	1	3	7	5	9	2	6
7	6	2	4	9	8	5	3	1

Answers to 3/12/2015 Sudoku

4	2	5	6	9	1	3	8	7
1	9	8	4	7	3	2	6	5
6	7	3	5	2	8	4	9	1
2	1	7	8	3	5	6	4	9
8	4	6	9	1	2	5	7	3
5	3	9	7	4	6	8	1	2
3	8	4	1	5	7	9	2	6
7	6	2	3	8	9	1	5	4
9	5	1	2	6	4	7	3	8

D	O	E
T	R	A
E	C	D

This week's Boggle

SEEDING IS ABOUT TO START

PLACE YOUR ORDERS NOW FOR PLANTING IN

2016

QUALITY PRODUCT AND CUSTOMER SERVICE

BLYTH TREE FARM

KATANNING

SALTBUSH, TREES, SHRUBS

We can help with local species selection that will comply
with any funded programs.

Email blythtreefarm@bigpond.com

Ph 08 9821 7883



BLYTH TREE FARM

Christmas is Here

Peter Whiting

Can you believe it? Christmas is here already. Time to look back on the year and wonder where it went. It has been a year of change at the Visitor Centre with new products, EFTPOS machine and new people starting.

Let's begin with whom. In March, we had a new Co-ordinator take the wheel and get things ship-shape. Elle Atwell came to us from a farming background to a strange new world. With a fresh outlook on things, Elle has fitted in with everyone and everything to make the Centre an inviting place to work and browse through.

We have had some changes in volunteers also; Annie Slarke and Val Whiting have joined the ranks to help fill the roster. We also said our farewell to Betty Daly-King who has hung her volunteering shoes up, but what an effort. Betty has been volunteering here for many years.

As the year progressed, the flow of visitors went up and down but with the wildflowers putting on a brilliant display the number of people coming through grew which kept us busy being as helpful as possible. Who could forget Lake Grace's most significant moment this year when Nat Fyfe came back home for a visit after winning the Brownlow? This actually brought a lot of out

of towners about including a tour bus which diverted their tour to swing through Lake Grace as the busload were Dockers fans.

Things have changed on the product front as well with the arrival of 'Wendy Binks' merchandise featuring 'Stripey' the Emu and friends, Lavender Valley Farms natural skincare products and eBee Creations featuring jewellery made using keys, watch cogs, circuit boards and other interesting pieces of bits. Fiona Palmer has added a new book titled 'The Saddler Boys' to her line-up of novels. During the year, some of our regular suppliers have exchanged or brought in new stuff. Ross Ramm, woodcraft, and Margaret Butler, glassware.

It has been an interesting, yet at times, challenging year but we got through it with minimum of fuss only to be another year older and maybe wiser in the end.

On behalf of the Coordinator and volunteers at the Lake Grace Visitor Centre may your Christmas be full of fun and laughter. Have a Merry Christmas and a Happy New Year.

lake grace engineering

*General Steel Repairs & Fabrication

*Stainless Steel Fabrication

*Insurance Work

*Aluminium Fabrication including boat repairs, boat trailers, canopies & toolboxes

*Sandblasting & Spray Painting

*Qualified Machinist for Lathe & Mill work including Hydraulic Cylinder repairs

*Hydraulic Hose Crimping & Fittings

*Transport Equipment Fabrication & Repairs

*New Agricultural Machinery (Seed/Super Bins, Chaser Bins, Augers & Comb Trailers etc)

Ph: (08) 98 651 845 / Fax: (08) 98 651 846

Email: adminlge@bigpond.com

Looking After Your Leftover Ham

Alison Dines

There's always more meat on a leg of Christmas Ham than you can eat in one sitting. But don't let it go to waste! Keep it at its best for longer and transform it into a range of delicious dishes.

How to store leftover ham.

Rinse a ham bag or old pillowcase in a solution of 1 cup white vinegar and 1 litre water. Wring it out well, place the ham on the bone inside and refrigerate. Wash out the bag and repeat the process every day. If you have leftover glazed ham, remove the cloves and place the skin over the cooked leg. Store as above for up to 10 days.

Can you freeze leftover ham?

Leftover ham is a great thing to freeze. Simply cut the ham off the bone, wrap the meat in plastic wrap, then in foil and place in a snap-lock bag with all the air removed.

How long does leftover ham keep?

If stored correctly, ham should keep for up to 2 weeks. Properly stored glazed ham will keep for up to 10 days after cooking. Frozen ham will keep for a month.

Try one of the following creative ways to use up the remainder of your Christmas Ham.

Pumpkin and Ham Curry - Mashed pumpkin combined with fragrant herbs, spiced with chilli and combined with ham or bacon. This tasty dish tastes great over rice or couscous.

Ingredients:

Serves: 4

20g butter	1 onion, finely diced
1 diced chilli	1 clove crushed garlic
1 teaspoon turmeric	1 teaspoon cumin
1 teaspoon nutmeg	1 teaspoon coriander
250g diced ham	2/3 cup pumpkin
2/3 cup orange juice	2/3 cup crunchy peanut butter

Directions:

Preparation: 10 min Cook: 10 min Ready in: 20 min

In a frying pan, melt the butter then saute onion, garlic, chilli, turmeric, cumin, nutmeg and coriander for 1-2 minutes. Stir in the ham (or bacon) and cook until brown.

Boil the pumpkin in the orange juice until soft. Puree the pumpkin and orange juice together. Add the spicy ham mixture and the peanut butter to the pumpkin and combine.

Serve on boiled rice, steamed couscous or boiled pasta.

TO MAKE THE MOST FROM YOUR FERTILIZER INVESTMENT



Call Tony Carew- Reid

0427 766 517

Dumblenyng
Kent
Lake Grace

Talk to me about all your fertilizer requirements.

Our New Seasons Fertilizer Supply Offer is out now.

Ask me about the new Vigour NPK compound fertilizer coming soon.



GUSTO

MAPSZC

MAXam
FLO



Cooking With Your Leftover Ham

Alison Dines

Ham Rice-Paper Rolls - Create these yummy rice paper rolls with leftover ham cooked on the bone.

Ingredients:

100g rice vermicelli noodles
2 cups leftover cooked ham, sliced into thin strips
1 small carrot, peeled, sliced into thin strips
1 cucumber, sliced into thin strips
2 shallots, sliced
¼ cup basil leaves
¼ cup chopped, roasted peanuts, plus extra to serve
16 x 22cm rice-paper wrappers
½ cup hoisin sauce, to serve

Sweet Chilli Dressing:

½ cup sweet chilli sauce
1/3 cup fresh lime juice
2 tsp fish sauce

Directions:

Preparation: 15 min Roll: 10 min Ready in: 25 min
Soak noodles in boiling water for 5 mins, or until soft.
Refresh under cold water, then drain. Cut into 5cm lengths. Combine noodles with pork, carrot, cucumber, shallots, herbs and nuts.

In a small jug, combine all dressing ingredients. Pour half the dressing into noodle mixture and stir to combine. Reserve remaining dressing.

Soak one rice-paper wrapper in a bowl of hot water for 20 secs. Drain and lay flat on a clean tea towel to absorb any excess water. Top with ¼ cup noodle mixture. Fold in ends and roll up firmly to enclose. Repeat with remaining rice-paper wrappers and mixture.

Serve with reserved chilli dressing and hoisin sauce sprinkled with extra nuts.

There are dozens more innovative and tasty recipes available for free on the internet. From kid-friendly to gourmet, visit the following sites for more ideas:

busycooks.about.com
www.saveur.com
abc.net.au
bbcgoodfood.com
stayathomemum.com.au
bestrecipes.com.au
taste.com.au

STUBBY'S ELECTRICAL PTY LTD T/AS

OUTBACK

LIC NO EC 004197



For all your domestic, rural and industrial electrical installations and repairs.

Split system air conditioning installation and decommissioning.

Large range of Australian brand LED floodlights, downlights, hibays and fluorescent replacements.

Ditchwitch hire and cable location.

With over thirty years experience in Lake Grace and surrounding areas contact Stubby or Reid anytime.

Stubby 0429 651 092 or Reid 0429 651 069

Office 9865 1092 all hours Fax 9865 1328

LIC NO :EC004197

RTA NO :AU29828

Landholders Asked to Help Control Wild Dogs

The Eastern Wheatbelt Biosecurity Group (EWBG) Inc. has been assisting the sheep industry to manage wild dog predation in the Eastern Wheatbelt for over 10 years.

Wild dogs are a serious pest in Western Australian and have an impact on landholders each year causing damage to livestock and native wildlife.

Current shire members of the EWBG are Kondinin, Kulin, Lake Grace, Merredin, Mt Marshall, Mukinbudin, Narembeen, Westonia, Trayning, Yilgarn and Nungarin.

The EWBG is also supported financially by Western Areas LTD, The Department of Agriculture and Food WA, State NRM and the State Governments Royalties for Regions program.

As a landholder it is your responsibility and obligation to report all Wild Dog sightings and stock attacks. Landholders reporting dog sightings and attacks helps assist in the management of this problem.

These reports can be made to EWBG on **0455 724 848** or **ewbg@outlook.com**.

Lake Grace Community
Resource Centre has a
new email address

lakegracecrc@westnet.com.au



Kylie and staff would like to thank all our customers for their support over the last year. We would also like to wish everyone a Merry Christmas and all the best for 2016.

Opening hours

Thur 24th 8am-1.30pm

Fri 25th - Mon 28th closed

Tues 29th - Fri 1st 8.30-2pm

PRICE RISE 1st DEC 2015

Call or email today to order

Pioneer Water Tanks supply rural Australia with water tanks for all types of farming and domestic applications. Built with strong and durable BlueScope Zinalume® or Colorbond® steel, **Pioneer Water Tanks** can be designed to fit your environment.

Price's Erections are your local authorised **Pioneer Water Tanks** distributor, based in Williams.

With over 25 years' experience in building tanks Barry Price can assist you with all your tank needs.

Phone: (08) 9882 4062

Mobile: 0427 824 063

Email: barry@priceserections.com.au

www.pioneerwatertanks.com.au



Price's Erections - design, fabricate and erect custom-made sheds.

eldersrealestate.com.au



Elders Real Estate NEW Appointment

Elders Real Estate Lake Grace are pleased to announce the appointment of **Garry Leo** as a Real Estate Sales Representative.

Garry will assist in the sales of rural properties and leasing sales of residential properties in Lake Grace and surrounding areas of Kukerin, Nyabing, Pingrup, Newdegate, Lake King, Varley, Hyden/Karlgarin, Pingaring and everywhere in between. He has been studying during the last year to obtain his Real Estate Certificate of Registration to act as a Real Estate Representative. Having obtained his certificate he is enthusiastically looking forward to becoming involved with buyers and sellers to achieve a satisfactory outcome for both parties.

Garry is well known in the Lake Grace area attending the District High School for his primary schooling before attending Aquinas for the remainder of his education. After schooling he returned home to complete an apprenticeship as a Heavy Duty Diesel Mechanic at the John Deere Dealership. He later joined CBH as a mechanic for 3 years.

Garry has been actively involved in the community through cricket, where he was captain of LGCC for 3 years; he has also played football for the local team and an occasional game of golf.

Garry is looking forward to working in conjunction with Ron Dewson to help provide a professional Real Estate team at Elders Lake Grace.

Ron has been "very impressed with Garry's enthusiasm and willingness to learn and become involved as soon as possible. I'm really looking forward to having Garry working with myself and Christine at the Lake Grace Branch".

Garry can be contacted at the Elders Office on 9865 3500 or mobile 0427 310980.



FOR SALE



74 Stubbs Street, LAKE GRACE

3 bedroom, 1 bathroom, fibro and Iron residence set on a large square block in walking distance to town facilities. Has reverse cycle air conditioning.

Lounge/dining/kitchen areas leading to the 3 bedrooms and bathroom from a central passageway.

The laundry opens out to a large rear yard, brick barbecue and patio. There is a powered garage, plus garden shed and access to rear of the property is available from a rear laneway.

For details or Inspection contact:

Garry Leo 0427 310 980 or Ron Dewson 0428 651 213

\$140,000

Elders Real Estate, Lake Grace WA 6353 Ph 9865 3500

Ron Dewson 0428 651 213

eldersrealestate.com.au

Put Yourself First This Christmas

Karen Hansen

The best Christmas present you can give yourself is time *now* to look after yourself. Many people put off seeking help about their health in the lead up to Christmas.

Taking time in the lead up to Christmas to see your doctor about possible signs/symptoms of cancer is an important message of the Cancer Council WA's Find Cancer Early campaign.

"The lead up to Christmas gets pretty hectic and it's easy to forget about looking after yourself. If you know something isn't right we encourage you to see your doctor well before - it's the best present you can give yourself", said Karen Hansen, Regional Education Officer for the Wheatbelt.

During the development of the Find Cancer Early campaign, researchers spoke to a number of people from regional WA with cancer. Christmas was a common reason why people postponed getting help.

"We were overwhelmed by the number of people who spoke about having symptoms before Christmas, but because they were so busy they put off seeing their doctor," said Karen Hansen, Regional Education Officer for the Wheatbelt. "But because of the Christmas shut down, when they were ready to see someone there

were big delays that pushed things back even further."

Evidence shows that delaying seeing the doctor for just 5 weeks can have a big impact on patient outcomes, which is why the campaign's message 'the earlier cancer is found, the greater the chance of successful treatment' is so important.

"Recognising symptoms early is important, so we want to encourage people to put themselves first. Find Cancer Early is all about helping people to recognise symptoms early and giving strategies to overcome excuses or barriers to seeking help" said Karen Hansen, Regional Education Officer for the Wheatbelt.

If you are over 40 and have coughed up blood or had blood in your pee once off tell your doctor. You should also tell your doctor if you have had any of these symptoms for more than 4 weeks: blood in your poo; problems peeing; looser poo (diarrhoea); unexplained weight loss; an unusual pain, lump or swelling anywhere in your body; a change in a spot on your skin; becoming more short of breath; or a persistent cough.

Having these symptoms doesn't mean you have cancer – often they turn out to be something less serious, but it's important to tell your doctor. More information is available at: www.findcancerearly.com.au.

For Sale 2 Waratah Avenue, LAKE GRACE



4 Bed 2 Bath 1 Garage 1 Carport

Very solid built brick and tile roof house, 992 sqm.

This house has 4 bedrooms, one with ensuite bathroom and a separate bathroom, laundry, dining area, kitchen and lounge area all open living plus entrance hall.

This home has reverse cycle split system air conditioning and air conditioner in the living area with a tile fire in lounge room. Electric cook top with exhaust fan and new wall oven. Solar hot water system.

Power has been upgraded to specification. Two fire alarms installed.

Has a garage under the main roof which is fully enclosed and separate carport. Secure patio area great for children and animals, with garden shed in rear garden.

All garden reticulated with lovely rose garden in the front.

Contact:

Rita Marshall	0428 649 030
Anna Strevett	0429 654 023
Cobi Stanton	0429 900 870

LGDHS P&C President's Report 2015

Attendances at meetings remain steady, however we have had a number of new financial members who wish to be kept informed of P&C activities by receiving the agendas and minutes.

Fundraising activities this year have been numerous, including Footy Tipping, the "Across The Lake" grape pick, Drummuster, Easter Raffle, Junior Primary Weekly Cake Raffle and Annual Cake Stall, Seniors Luncheon catering, and catering for two Rabobank functions. In addition, P&C continues to operate the school canteen each Monday, and provide a uniform shop facility.

All of these activities require willing volunteers to give their time and efforts selflessly, and we are very fortunate in Lake Grace to have so many parents and community members who happily respond to calls for assistance with P&C fundraisers. I would like to thank our school families for the countless hours they have contributed towards these activities.

I would also like to thank Delys Giles for taking on the position of Treasurer this year, and Shelley Stanton for continuing in the role of Secretary for the second year. Thanks also to Missy Clifford for single handedly running the uniform shop, and to Tania Bray, Kate Zweck, Fiona Chatfield, Missy Clifford and Tash Strevett for running the canteen. Thank you for making time in your busy lives to do these things for the benefit of our children's education.

This year the major P&C financial contribution to the school was the purchase of floor covering for the undercover area. This has greatly improved the comfort of the children when using this area at recess and lunch and assemblies etc, and it gives the area a much more finished and attractive appearance. The recent Year 9/10 graduation dinner was held in the Undercover Area, and the difference the new flooring made was amazing! P&C have also contributed towards reading books, the Quadrangle Upgrade Project (being undertaken by the Student Councilors), and resources for the Junior Primary (many of which are also utilised by year three and four students when playing in the Kindy/Pre-primary area).

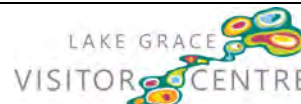
In August, Shelley Stanton and I attended the WACSSO Annual State Conference in Perth and gained valuable insight into other P&C's. We attended information sessions and had the opportunity to hear from guest speakers including Sharyn O'Neill (Director General of the Department of Education). The weekend was a wonderful opportunity to gain ideas and perspective on the role of the P&C.

In October a meeting was held to discuss the cost of camps and excursions, and options on how to fund these. In the past, PCAP (Priority Country Areas Programme) funding helped to significantly lower the cost of camps/excursions for country students, however this funding is no longer available. Rather than putting endless pressure on everyone to fundraise an

overwhelming amount of money, a decision was made to develop a "P&C Camp Fund", which will be an ongoing commitment to make camps and excursions accessible to all students, and reduce the overall cost to all families. Our students have the opportunity to attend a number of amazing camps and excursions in 2016, including Outward Bound for the secondary students, and a Mornington Camp for upper primary. A number of parents volunteered to organise fundraisers, with some of these already completed, including a car wash, Seniors Christmas luncheon catering, selling Cadbury chocolates and a Christmas Hamper raffle.

Another area of focus for P&C in 2016 will be taking a more pro-active approach to promoting our high school locally and in surrounding areas. Tania Bray has done an enormous amount of work in this area throughout the year, lobbying for a boarding hostel and/or feeder buses from outlying areas. City boarding schools are now big financial businesses, campaigning for our children to start boarding in Year 7. There are many benefits for students and their families (and social and economic benefits for the community), in students staying at LGDHS for secondary. We aim to market these benefits and really put our wonderful school on the table for discussion with families planning their children's secondary education.

Lastly on behalf of our school families and the wider community, I would like to thank all the staff of Lake Grace DHS for your efforts throughout 2015 in making our school so dynamic. Your commitment and hard work is outstanding, and is very much appreciated by our school families and our community. To staff, students and families leaving our school we thank you for your contributions to our school, and wish you all the very best for the future.



Want to get away for the Christmas break but having trouble deciding where to go?

Drop in for free brochures and information about places to go and things to see and do over the holidays.

Ph: (08) 9865 2140

Open 9.30am - 4.30pm

lgvisitorcentre@westnet.com.au



Bird in the Bush
& Co

18-20 Sanderson Street, Pingrup 6343

Opening Times

Mon-Wed 7:30-15:30

Thursday 7:30-19:30

Sunday 10:00-14:00

Fri/Sat - CLOSED

GROUP BOOKINGS WELCOME

Please call ahead to
avoid disappointment



Takeaway Menu



Blackboard Specials

Sunday Brunch



Tasty Lunches



Freshly Ground Coffee



Homemade Cakes Served Daily



Thursday Pizza Night

CARNE AMORE - \$22

Leg ham, salami, bacon, sausage and barbeque sauce

FLORENTINE - \$20

Prosciutto, spinach, tomato, mushrooms, eggs and herbs

SEAFOOD SAVOROSO - \$24

Prawns, smoked salmon, anchovies, capers, red onion and rocket with light sour cream

TROPICALE - \$18

Leg ham, pineapple and cheese

MONFALCONE - \$19

Roasted capsicum, artichoke hearts, chorizo and olives

GARLIC BREAD - \$5

AND ASK ABOUT THE CHEF'S SPECIAL THIS WEEK!



Telephone: 0476 159 688



www.facebook.com/birdinthebushco





*Management & Staff of
Great Southern Fuel Supplies + Stevemacs
would like to thank all our customers for their
support throughout 2015 and wish everyone a
**Merry Christmas & Happy, Healthy &
Prosperous New Year***



TREVENEN

Building & Glass

GLASS SERVICES
24hr glass repair service
Aluminium windows & doors
Glass splash backs
Fireplace glass
Fly screens & other screen doors
Shower screens, mirrors
Glass supply & cutting
Window & door repairs

0437 577 214
34 Bennett Street, Lake Grace
trevenenbuilding@hotmail.com

Make Christmas Work For You...

Article supplied courtesy of WA Association of Mental Health via <https://www.mindfulemployer.org>

Love it or loathe it, it's that time of year again, where carols are piped relentlessly through shop sound systems, car parks are jammed, our to-do list seems endless and queues to see Christmas Lights go to eternity.

By the time you come to sit down to **Christmas** lunch, you run the risk of being exhausted – physically, mentally, emotionally and/or financially. If you stop to look at what is causing you to be feeling tired and dragging yourself till the office shuts down over **Christmas**, you may find that you have more choice in the occasion than you think.

Viewing **Christmas** as an event you can participate in as much or little as you please, can help in managing the pace and often unrealistic expectations associated with this time of year.

If you think that **Christmas** Day should be a 'Hollywood Fairy-tale' – everyone in a happy mood, with copious quantities of food being served magazine style – this is a great way to ensure you are left feeling let down.

Just because Christmas is here, people don't change . . .

Expecting those around you to be different than usual can add to disappointment; it is easier to be aware of what we are stepping into and finding ways to enjoy ourselves amidst that.

The quantity of social invitations during November and December may increase, however, it's important to say yes to the events we consider to be the most important to participate in. You can catch up with people after **Christmas** or perhaps join a trend of celebrating **Christmas** with certain circles of friends in July, taking advantage of cooler weather to enjoy a big nosh up.

Why can't we all be together?

Everybody would love to be together on December 25, but in reality this is often not possible. Try to minimise the amount of driving you do on **Christmas** Day so that the hours are spent enjoying people's company, rather than travelling to where you 'should' be.

Be assertive in saying 'no' when required. Happy families are usually ones where everyone accepts that it is just another day in the calendar and a good time to catch up where possible.

I wish you were here . . .

Christmas may be one of loss or loneliness, perhaps for the first time, and nothing will change that.

Organising something to look forward to after Christmas Day, whether it is a few quiet days at home, catching up with close friends or enjoying an activity that you love can assist in getting through what may be difficult circumstances. People you find most supportive may be the best to surround yourself with at this time of year.

Don't stretch the budget

The idea of giving at **Christmas** doesn't require credit cards to be maxed out. Set a budget, plan a shopping list, and don't go over it.

You can ask guests to contribute a dish or to bring their own drinks to cut down the costs of entertaining a large number of people. Suggest a spend limit on presents given to friends and family, or give to children, not adults. It may not be what you've done previously, but it can save financial distress of getting out of debt once the day has passed.

As **Christmas** marks another year drawing to a close, people tend to reflect on what has been gained and lost over the year and whether they are where they 'should' be or thought they 'would' be by now in their lives. It is not helpful to make comparisons to other family members or peers.

Focus on things in your life to be grateful for. This will help you take a positive approach to the day, as well as allowing you to reflect on your achievements and what you have.

You can make **Christmas** a time of year where the spirit of giving - not just of gifts, but of kind words and deeds - is enjoyed and is a pleasure. It's worth taking this time of year by the scruff of the neck and putting in place measures to make it a good time of year, every year.



**Lake Grace Health
& Beauty Centre**

Leonie & Irene would like to thank everyone for their support in 2015 and would like to wish you a very Happy Christmas and New Year.

Please note:

- we will be closing at 2:30pm on 24th Dec
- re-opening at 9:30am on Monday 4th Jan 2016

January trading hours will be posted on entries to the shopping centre.

Lakes Link News

Deadlines & Advertising Prices for 2016

Our advertising rates are as follows:

1/8 page - \$12.50 (6.5cm high x 9cm wide), ¼ page - \$17.50 (13.2cm high x 9cm wide),
½ page - \$30.00 (13.2cm high x 18.2cm wide), Full page - \$55.00 (26cm high x 18.2cm wide),
Colour - \$160

Ph: (08) 9865 1470 Fax: (08) 9865 1471 email: lakegracecrc@westnet.com.au

Issue Number <i>Volume 22</i>	Deadline Date <i>Monday 3pm</i>	Publishing Date <i>Thursday</i>
1	18 th January	21 st January
2	1 st February	4 th February
3	15 th February	18 th February
4	29 th February	3 rd March
5	14 th March	17 th March
6	Thursday 24th March	31 st March
7	11 th April	14 th April
8	Friday 22nd April	28 th April
9	9 th May	12 th May
10	23 rd May	26 th May
11	Friday 3rd June	9 th June
12	20 th June	23 rd June
13	4 th July	7 th July
14	18 th July	21 st July
15	1 st August	4 th August
16	15 th August	18 th August
17	29 th August	1 st September
18	12 th September	15 th September
19	Friday 23rd September	29 th September
20	10 th October	13 th October
21	24 th October	27 th October
22	7 th November	10 th November
23	21 st November	24 th November
24	5 th December	8 th December
25	19 th December	22 nd December

Harvest Report

Media Release

CBH would like to thank everyone for their support this year in what has been a year of extremes across WA.

The CBH General Manager of Operations, David Capper says this harvest had some challenges.

"Hail damaged crops in multiple locations across the state and ongoing rain through harvest has been challenging for growers as they manage the moisture and quality of the crop," said Mr Capper.

"The Esperance fires have been devastating for growers in the area and were accompanied by strong winds that decimated yields.

"Despite these challenges, the people of Esperance have remained resourceful and resilient and we will continue to offer assistance in managing segregations to accept damaged grain where possible.

"Highlights this year have been the parts of the Northern Kwinana Zone having an exceptional year.

"The productivity on such limited rainfall across most of the state has been a credit to growers. Even though we had close to no rain in July or September; yields have held up well in many areas, producing a well above

average crop.

"Merry Christmas and Happy New Year to all of the grain growers in WA and please stay safe as we finish harvest," said Mr Capper.

11,346,799 tonnes have been received so far across all zones.

Totals

• The total received to date for Geraldton Zone is **2,254,076 tonnes**

• The total received to date for Esperance Zone is **1,932,492 tonnes**

• The total received to date for Kwinana Zone is **5,174,591 tonnes**

• The total received to date for Albany Zone is **1,985,640 tonnes**



Bluff Knoll Café

Bluff Knoll Café

Closed

Dec 23rd, 24th, 25th .

Open:

**Dec 26th. 12 midday
to 8pm**

**Dec 27th, 28th, 29th.
8am to 6pm**

Dec 30th Closed

Dec 31st 8am to 8pm

**Jan 1st 2016
10am to 8pm**

Wishes past, present, future & regular in fact
all our lovely customers of the Bluff Knoll Café
a wonderful, happy & safe Christmas.

We look forward to being open again Dec
26th ..

Wishing all a safe & prosperous 2016

Happy New Year!



From the Archives...December

2000 - Fifteen years ago...

Lake Grace Telecentre receives \$18,308 grant funding from the Lotteries Commission to publish a book featuring the stories of the 48 women featured on the mural.

The Shire Council of Lake Grace is asking for expressions of interest from community groups to redevelop the Stationmasters house at 23 Stubbs Street. The house and land, a Westrail Reserve site, have been offered to the Shire of Lake Grace. Westrail is prepared to transfer the ownership of the house and land to Council but neither will fund the restoration of the house: Westrail propose to demolish the building.

The Community Bus Committee have been successful in obtaining a \$45,000 grant from the Lotteries Commission to assist with the purchase of a new bus.

Community host 'Flop Crop New Year's Eve Community Bash' to welcome in 2001.

2005 - Ten years ago...

Lake Grace Police hosted a Drinks Awareness Night at the Sportsman's Club.

73 junior tennis enthusiasts competed in the Lake Grace junior tennis tournament.

Lake Grace Two won the U16 Basketball Grand Final in Kulin.

2010 - Five years ago...

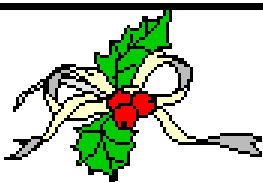
Gregson Meston retired from the Shire of Lake Grace works team after 50 years of service.

The Lake Grace St John Ambulance sub centre received their 'new' second ambulance.

Gemini Medical closed the doors at the Lake Grace Medical Centre for the last time after servicing the community for 12 years.

The Community Crop team harvested their hard work with a yield of 745kg/ha of wheat and 610kg/ha of barley.

67 junior tennis players competed in the Lake Grace Tennis Club's Junior Tournament.



COMMUNITY CHRISTMAS CAROLS

When : Friday 18 December 2015

Where: Lake Grace Hall

Time : 7pm

(Children are invited to dress up as Angels or Shepherds)

ALL WELCOME



Bidwell Earns National Cap

Nigel Routledge, GERALDTON GUARDIAN

Star cricketer Shayne Bidwell is poised to add yet another quill to his feather-laden cap in the New Year.

Bidwell will play for the Australian Country XI in Mt Gambier against a team that will include several Cricket Australia contracted players, some with first-class experience.

He is the only West Australian in the team and won a spot after a series of top performances in last season's Australian Country Cricket Championships.

He was equal leading wicket taker with 12 wickets at 12.58 and an outstanding economy rate of 2.85 runs an over for which he was awarded the Bill O'Reilly Medal. He also made handy late-order runs, fielded well and was runner-up to Queensland's Ben O'Connell for the Player of the Carnival but did not win the Waldron Medal as WA's best.

As he is playing in the Australian Country game, Bidwell has committed again to represent WA Country at the Australian Championships which will also be held at Mt Gambier.

"I wasn't sure what I'd do but after being included in the

Australian Country XI I've decided that if I am going to go over for that, I might as well stay for the championships," he said.

There was an intra-squad game in Narrogin at the end of November which was the final selection game for the WA Country side. Bidwell couldn't attend due to work and distance, but he was given an indication he'd still get picked for the touring squad.

Bidwell's record is remarkable for not only has he made a mark for WA Country over several campaigns.

He has also taken 496 A-grade wickets and scored 7187 runs for Wanderers in the Geraldton Bendigo Bank Cricket League.

Along the way he has collected six Cricketer of the Year Awards and was inaugural co-winner of the Doug Hogue Medal in 2010-11.

He has been equally proficient at Country Week, where in 51 games he has snared 126 wickets and made 979 runs.



THE AG SHOP
AGRICULTURAL PARTS & SERVICE

GET YOUR HEADER READY FOR NEXT YEAR....

Avoid the rush and get it all done now!

End of harvest specials available...could save thousands!

Give us a call – 08 9880 5574



YOUR LOCAL AUTHORISED DAVEY REPAIRER.

WE CAN ALSO REPAIR MOST OTHER BRANDS.

CHURCH TIMES

Anglican Church of Lake Grace

Sunday 20th December

Lake Grace 9am

Wednesday 23rd December

Christmas Service

Lake Grace 7pm

Sunday 27th December

No Service

Enquiries: Father Dave 0427 545 560
Terry Gladish 9865 1022



60 Absolon Street, Lake Grace

Phone: 9865 1291 or 0437 204 909

All Mechanical Servicing and Repairs

on Trucks, 4WD and Passenger

Tyre Supply and Fitting

on Ag, Truck, 4WD and Passenger

(work ute available for off site Ag Tyre Fitting)

Marine Servicing - Outboards

Call Paul Wheeler on

9865 1291 or 0437 204 909

for any quotes or enquiries

we can help you with.



An invitation to celebrate the
Birthday of Christ

PRE-CHRISTMAS MASS

Varley

December 20, Sunday 2015 at 11am

There will be singing of Christmas Carols before Mass.

Shared lunch follows after mass. All welcome.

CHRISTMAS EVE MASSES

KUKERIN

December 24, 2015 Thursday at 6pm, St Thomas á
Becket Church, *Shared Supper follows after mass*

Lake Grace

December 24, Thursday 2015 at 7.30pm

There will be singing of Christmas Carols before Mass.

Shared Supper follows after mass. All welcome.

CHRISTMAS DAY MASSES

RAVENSTHORPE

December 25, 2015, Friday, at St Andrew's Anglican
church, 9am

Refreshment follows after mass. All welcome.

HOPETOUN

December 25, Friday 2015 at 11am

There will be singing of Christmas Carols before Mass

refreshment follows after mass.

MARIA REGINA CATHOLIC PARISH
P.O Box 248 LAKE GRACE W.A. 6353

Ph: (08) 9865 1248 Fax: (08) 9865 1981

Email: lakegracecatholicchurch@westnet.com.au

Lake Grace Cricket Club (Inc.) News and Notes

Reid Stubberfield

Saturday 12th December saw Lake Grace take on Karlgarin-Pingaring in a 44 over game at Lake Grace. It was a great day for cricket with KPCC batting first after winning the toss. Lake Grace got off to a great start in the field and held KPCC to 2/67 at drinks. The great work in the field continued throughout the overs with the bowlers keeping it tight and the fielders lead by Matt Trevenen saving every run they could. After the 44 overs KPCC were held to 7/157 with M.Spurr 66 n.o and L.Gray 2/32 the leading wicket taker.

Once again after a brilliant spread of afternoon tea the run chase began. Unfortunately KPCC bowlers were on the money right from the start and wickets began to tumble. By drinks LGCC was 6/81 and apart from a gallant captain's knock we were soon dismissed for 104. M.Trevenen 45 was the highest scorer and G.Argent the pick of the bowlers with 4/34.

Following the game the cricket club hosted steak teas at the Sportsman's club. Once again it was extremely well supported and we would like to thank everyone who joined us. This weekend sees LGCC travel to Newdegate for the last regular game before Christmas. On Sunday 20th the Lake Grace Cricket Club will take on the Lake Grace Pingrup Football Club in a 20/20 starting at 3:30 at the pavilion. Please come along for a look and a fun afternoon.

Lastly we would like to wish everyone a merry Christmas and thank all our supporters and sponsors for their efforts so far this season and we look forward to the rest of the season after the Christmas break.

K.P.C.C 7/157		44 overs	
R.Spurr	Run out	M.Trevenen	43*
L.Want	c M.Trevenen	b S.Korosec	11
M.Spurr	Not out		66
K.James	c M.Trevenen	b L.Gray	17
T.Fotheringham	c R.Stubby	b L.Gray	14
G.Argent	c K.Gray	b G.Leo	3
C.James	c W.Millar	b T.Gamble	5
R.Smith	c J.Trevenen	b J.McKenzie	3
T.James	Not out		0
Bowling		S.Korosec 1/27(9) W.Millar 0/9(4) G.Leo 1/13(5) K.Gray 0/18(5) K.Pinney 0/16(8) L.Gray 2/32(5) T.Gamble 1/18(4) J.Trevenen 0/9(3) J.McKenzie 1/13(1)	

LAKE GRACE 10/104		32.1 overs	
K.Pinney	c M.Spurr	b G.Argent	9
K.Gray	Lbw	b C.James	1

G.Leo		b C.James	8
M.Trevenen	c L.Want	b G.Argent	45
J.Trevenen	c T.James	b C.James	9
L.Gray		b L.Want	22
R.Stubberfield		b L.Want	0
S.Korosec	c R.Spurr	b K.James	1
T.Gamble		c and b G.Argent	2
J.McKenzie	c T.James	b G.Argent	1
W.Millar	Not out		0

Bowling G.Argent 4/34(9) R.Spurr 0/19(3) L.Want 2/12(4) K.James 1/4(4) K.Kenny 0/2(1.1) C.James 3/32 (11)

IN 2015/16 LGCC IS PROUDLY

SUPPORTED BY

Leading Appliances Lake Grace
 Lake Grace Plaza/IGA
 Elders Lake Grace
 Maalouf Ford
 High Valley Merino Stud
 Lake Grace Home Improvements
 Great Southern Fuel Supplies
 Kael Gray Mobile Welding
 Greenline Lake Grace
 Outback TV
 RW & R Pelham
 Tom O'Neill Spraying Service
 Lake Grace Communications & Computers
 Walkers Hill Vineyard
 McKenzie Rural Contracting
 Lake Grace Hotel
 CCL hardware

The Wrong Bias

Sonya McSwain

I was going to tell you of some fantastic feats for our Single Championships, but unfortunately the rain came down and washed the day away. Felt a bit like Insy Winsy Spider. I have some news on the League Pairs and Triple Championships that was played at Newdegate on the weekend. The Ladies Pairs, they were nearly champions, and as for the Mens Pairs, I do believe they had a horror run. Now for the Triples, lets just say there is always next year.

The Calendar.

December

Thursday 17th - Training

Saturday 19th - Round 7, Lake Grace v Newdegate at Newdegate. Bus will leave the club at 12.45pm.

Sunday 20th - Social Day. Xmas Lucky Dip. Bring a long a \$5.00 Christmas gift. Names in by 1.00pm. Start at 1.30pm

Wednesday 23rd - Corporate Bowls

January

Saturday 2nd - Social Day. Names in by 1.00pm. Start at 1.30pm.

Saturday 9th - Mixed Pairs. Trophy Day. Names in by

12.30pm. Start at 1.00pm. Wear your uniforms.

Saturday 16th - Social Day. Opposite Hand Day.

Names in by 1.00pm. Start at 1.30pm.

Saturday 23rd - Social Day. Bring a can of anything.

Saturday 30th - Social Day. Mixed Singles. Handicap.

The last bit.

We are doing Steak teas on Saturday 19th, so could everyone bring a salad.

Thank you.

Sunday 10th January, Kulin is hosting the Mens ILRR4's, I have been asked for some helpers. If anyone is available for that, could you please see me. Thank you.

I wish everyone a Merry Christmas and a Happy New Year.

Corporate Bowls will resume after school goes back.

LAKE GRACE IGA

Wishing all our valued clients a Merry Christmas and Happy New Year.... *Drive Carefully.*

Our Opening Hours for the Festive Season are as follows:

2015

Fri (Christmas Day)	25/12	closed
Sat (Boxing Day)	26/12	8am—10am papers/fresh bread
Sun	27/12	8am—5pm
Mon	28/12	8am—10am
Tues	29/12	Usual hours
Wed	30/12	Usual hours
Thurs	31/12	Usual hours

2016

Fri (New Years Day)	01/01	8am—5pm
Sat	02/01	6am—11:30am
Sun	03/01	8am—5pm



PUBLIC NOTICES

Gopher Maintenance

Are any of the gopher drivers interested in a visit from Calibre Care in Albany to service their gopher?

If so contact the CRC on 9865 1470.

"SACRED HEART COLLEGE, SORRENTO - 50TH ANNIVERSARY 2016

The former Sacred Heart Girls College in Sorrento is preparing for its 50th anniversary next year. All ex-students are welcome to be involved with the planned celebrations.

Two of the very early boarders Mandy (Clayton) and Cindi (Mouritz) are currently seeking fellow ex-students, in particular from the years 1967 though to about 1985. If you were a boarder or know of any families who were connected with the school, please contact Mandy (1972) and Cindi (1975) on: backtoshgc2016@gmail.com.

Also, please give your maiden name and your graduating year as this will help group you with peers should you wish to attend any of the planned celebrations. Class photos would be appreciated."

WANTED

Contact with Lake Grace district's families whose forebears bought Chevrolet (and other makes of cars) from "Barrett & Dawson" in the 1923-1941 era. The Barrett family of the automotive firm also ran a carrying service to Newdegate and farmed at Lake Biddy, and sold Case tractors later in the stages of their business life.

If locals have any details, advertisements from old newspapers, invoices/receipts from the firm AND ANY photographs of the vehicles, I would be most grateful to be able to have copies for my ongoing research into the automotive dealerships around WA in the 1900-2015 period.

I have been helped greatly by Athol and Frank Barrett, both now retired in Perth, whose father Victor ran the Chevrolet/Case business with Bob Dawson.

A John Parker - 9271 4272 - 0422 081 873 - ajohnp2@dodo.com.au

Community Midwife

Sandy Slee the Community Midwife will be coming to Lake Grace the first Tuesday every month until further notice.

Sally Dickinson

Counsellor for Southern AgCare.

A free and confidential service.

Contact direct: 0427 192 155

www.southernagcare.org.au

Kulin School Centenary 12th March 2016

REGISTRATIONS NOW OPEN!

Contact the Kulin Community Resource Centre for a centenary registration form, available by email, online or in person
RSVP February 1st 2016
9880 1021

crccounter@kulin.wa.gov.au

www.kulin.wa.gov.au

Planning and Development Act 2005

Local Planning Scheme Amendment Available For Inspection



Shire of Lake Grace Local Planning Scheme No.4 Amendment No.4

Notice is hereby given that the Shire of Lake Grace has prepared the abovementioned local planning scheme amendment for the purpose of:

Re-classifying Lot 92 (No 50) and Lot 93 (No 52) Stubbs Street Lake Grace within Reserve 27942 from Local Scheme Reserve 'Public Purpose – Agriculture WA' to 'Commercial' zone.

Documents and plans setting out and explaining the scheme amendment proposal have been deposited at the Shire of Lake Grace Administration Centre, No.1 Bishop Street, Lake Grace and at the Western Australian Planning Commission, No.140 William Street, Perth and will be available for public inspection during office hours up to and including **Friday, 29 January 2016**.

Submissions on the scheme amendment may be made in writing and lodged with the Shire's Chief Executive Officer at PO Box 50, Lake Grace WA 6353 by no later than **Friday, 29 January 2016**.

Neville Hale

Chief Executive Officer

Community Clubs and Associations

Club / Association	Secretary / Contact	Contact Number	Contact Email
Artist Group	Tania Spencer	0429 041 063	spencertania@hotmail.com
Camera Club	Nicole Argent	0428 315 773	knargent@bigpond.com
Craft Group	Meet at the CWA Building Saturdays from midday onwards		
CWA	Irene McGlinn	08 9865 1148	irenemcglinn@bigpond.com
Early Learning Centre (Daycare)	Chloe De Frenne	08 9865 2568	lakegraceelc@gmail.com
Development Assoc	Paula Carruthers	0499 616 070	ghpmcarr@bigpond.com
Men's Shed	Phil Clarke	0427 651 155	philclarke@westnet.com.au
Playgroup	Amy Jones	0400 206 321	lakegraceplaygroup@mail.com
School	Registrar	08 9865 1207	lakegrace.dhs@education.wa.edu.au
Sportsman's Club	Claire Pelham	08 9865 1239	lgsportsmansclub@bigpond.com
Toy Library	Amanda Trevenen	0488 216 601	amanda.harrower@hotmail.com
Summer Sport			
Lake Grace Bowling Club	Claire Pelham	0457 207 749	richie21claire@yahoo.com
Lake Grace Cricket Club	Shaye Bowron	0428 652 556	shayebowron97@gmail.com
Lake Grace Swimming Club	Anke Stoffberg	0439 903 411	stoffberg@westnet.com.au
Lake Grace Tennis Club	Kristie Stanton	0427 973 206	kristiehobley@hotmail.com
Tarin Rock Tennis Club	Kevin Naisbitt	0427 649 043	jenakora@bigpond.com

Crisis Care Numbers

Doctor's Surgery - 9865 1208	Electricity Faults - 13 13 51
Hospital - 9890 2222	Water Faults - 13 13 75
Ambulance/Fire/Police - 000	Directory Assistance - 1223
55 Central Men's Refuge 9272 1333	Family Helpline 1800 643 000 / 9223 1111
Sally Dickinson 0427 192 155 <i>Southern AgCare Counselling</i>	Kids Helpline 1800 55 1800 www.kidshelp.com.au
Poisons Information 13 11 26	Ngala 9368 9368 www.ngala.com.au
Crisis Care WA - 9223 1111 / 1800 199 008 www.community.wa.gov.au	Relationships Australia <i>Fair Programme</i> 9336 2144 www.wa.relationships.com.au 1300 364 277
Lifeline Australia - 13 11 14 www.lifeline.org.au	Beyond Blue - 1300 22 4636 www.beyondblue.org.au
Seniors Information Services 9321 2133 www.cotawa.asn.au	Citizens Advice Bureau 9221 5711 www.cab.wa.com.au
Family Court of WA 9224 8222 / 1800 199 228 www.familycourt.wa.gov.au	Youth Legal Service 9202 1688 / 1800 199 006 www.youthlegalservice.inc.com.au
Main Roads - 138 138	

Justices of the Peace

Colin Connolly	0427 858 066
Ron Dewson	9865 1224
Amanda Milton	0429 654 011
Geoff Sabourne	0429 651 171

Lake Grace Shire Councillors

Councillor	Telephone	Fax
Andrew Walker (<i>President</i>)	9865 1241	
Jeanette de Landgraft (<i>Vice</i>)	9838 9062	9838 9041
Len Armstrong	9871 1334	9871 1317
Ross Chappell	9865 4058	9865 4051
Debrah Clarke	9865 4041	9865 4032
Steve Hunt	9865 1650 0427 651 585	
Allan Marshall	9865 3022	9865 3012
Murray Stanton	9865 1329	9865 1223

COMMUNITY CALENDAR

December / January

Fri 18 Business sponsored Christmas drinks
Community Christmas Carols
HACC Christmas party

Sat 19 Craft Group at CWA 12 noon onwards
Rubbish tip open
Meals at the Sportsman's Club
Bowls - LG v Newdegate
Pingaring 90th Christmas Tree
Cricket - Newdegate v Lake Grace

Sun 20 Rubbish tip open
Bowls - Social Day

Mon 21 Rubbish Collection & rubbish tip open

Tue 22 Chair Aerobics 10:45am at Village Hall
SOYF Seniors Program-10am @ Shire Hall
Men's Shed 9.30am-12 noon
Weight Watchers @ Village Hall

Wed 23 Rubbish tip open
HACC Activity & Morning Tea 10-11:30am

Thur 24 Christmas Eve

Fri 25 Christmas Day

Sat 26 Rubbish tip open

Sun 27 Rubbish tip open

Mon 28 Rubbish Collection & rubbish tip open
Recycling Collection

Tue 29 Men's Shed 9.30am-12 noon

Wed 30 Rubbish tip open
HACC Activity & Morning Tea 10-1:30am

Thur 31 Cricket Training

Fri 1 New Years Day

Sat 2 Rubbish Tip open
Craft Group at CWA 12 noon onwards

Sun 3 Rubbish Tip open

Mon 4 Rubbish Collection & rubbish tip open
Cricket - Junior Countryweek

Tue 5 Weight Watchers @ Village Hall
Men's Shed 9.30am-12 noon

Wed 6 HACC Activity & Morning Tea 10-1:30am

Fri 8 Driving Assessor in Lake Grace

Sat 9 Bowls - Mixed Pairs
Rubbish Tip open

Sat 9 Cricket - Hyden v Lake Grace
Craft Group at CWA 12 noon onwards

Sun 10 Rubbish Tip open

Mon 11 Rubbish Collection & rubbish tip open
Recycling Collection

Tue 12 Building Surveyor in Lake Grace
Weight Watchers @ Village Hall
Men's Shed 9.30am-12 noon

Wed 13 HACC Activity & Morning Tea 10-1:30am
Rubbish Tip open

Sat 16 Bowls - Social Day
Rubbish Tip open
Craft Group at CWA 12 noon onwards

Sun 17 Rubbish Tip open

Mon 18 Lakes Link News Deadline
Rubbish Collection & rubbish tip open

Tue 19 Weight Watchers @ Village Hall
Men's Shed 9.30am-12 noon

Wed 20 HACC Activity & Morning Tea 10-1:30am
Rubbish Tip open

Thur 21 Lakes Link News Published

Coming Events

26th January - Australia Day Breakfast
27th January - Building Surveyor in Lake Grace
2nd February - SOYF Seniors Program-10am @ Shire Hall resumes
5th February - Toy Library reopens
7th February - Tennis (Toolibin v Lake Grace)
9th February - CWA AGM - 1:30pm
17th February - Visitor Centre AGM 4pm
24th February - Shire Council Meeting

Lake Grace Sportsman's Club

Will be closed on

Friday 25th December 2015

Friday 1st January 2016

		5	4	3				8
	8		7			6	1	
2	7	1			6			
7		8		1			9	
	2		5		3		4	
	4			9		1		5
			1			9	8	4
	6	7			9		3	
9				5	8	2		

Sudoku

- ☐ The Sudoku grid of rows and columns is divided into individual 3x3 boxes.
- ☐ The aim of the game is to fill each row, column and 3x3 box with the numbers 1 to 9.
- ☐ You can't repeat numbers in a row, column or 3x3 box and you can't change the numbers already in squares.

		4	3		2	7		
	3		9		1		2	
9				6				8
2		5				4		6
	4						1	
7		1				8		3
3				2				5
	2		6		8		4	
		9	1		7	3		