

# LAKE LINK NEWS

Produced at the  
LAKE GRACE COMMUNITY RESOURCE CENTRE  
School Place  
PO Box 177 Lake Grace WA 6353  
Ph (08) 9865 1470 Fax (08) 9865 1471  
Email: [lakegracecrc@westnet.com.au](mailto:lakegracecrc@westnet.com.au)  
ABN: 19 498 730 152  
Website: [www.lakegracecrc.net](http://www.lakegracecrc.net)

23rd November 2017

\$1.20 inc GST

Vol 23 Issue 23

## Lake Grace Community Harvest 2017

*Rosie Timperley and John O'Neill*



**Photo: Matt Newham and Gary Frost with the Case harvester.**



**Photo: Justin McHugh and Natasha McHugh standing in front of a Fyfe truck.**

The brand new CASE IH header, generously donated by Farmers Centre, was put to work on the 20th and 21st November. This took place out at the community cropping area on the corner of Willcocks Road and Cummings Road, south of Lake Grace.

Harvesting La Trobe barley, which has a fantastic yield suitable for low to medium rainfall areas, the crop came off without a hitch. With an average temperature of 26° and low wind speed, both days saw perfect harvest conditions.

This is the fourth year of the cropping project and the Lake Grace community is getting closer to owning a fantastic asset in the land. Large projects such as this wouldn't be successful without the many helping hands of different community

members. We live in a fantastic town where numerous people pitched in and helped out to bring about a successful harvest.

A very big thank you to Gary Frost and staff at Farmers Centre Lake Grace and particularly Matt Newham for harvesting the 118 hectare crop which proved to be a big job. Also thank you to David Fyfe's company, Fyfe Transport, for donating their trucks and their time to cart the grain to CBH. Contributions of field bins and tractors for grain storage from Greg Carruthers and family and Alan Marshall and family were greatly appreciated by the cropping group.

The hard work and contribution to the community are very much appreciated.

Continue Page 15

# CONTENTS

Page 1,15	Lake Grace Community Harvest	Page 21-24	Shire News
Page 3	Editorial	Page 25	Farmers Furious
Page 5	Getting To Know	Page 26	Humour
Page 6	Wheelchairs For Kids	Page 27	Sharing Economy Rights and Rules
Page 7	Swimming Pool Open	Page 29	Road Safety Campaign Launched
Page 9	ATAR Exams Finished @ Narrogin Ag	Page 30	Regional Hat Use
Page 10	Weather, Dolphins	Page 32	Get a Better Night's Sleep
Page 11	Melville Merge Festival	Page 33	Healthier Hearts, Electric Cars
Page 12	LGDHS Cadets	Page 34	Beyondblue and NHMRC
Page 13	Police Report	Page 35	Tarin Rock Tennis Notes
Page 17	All Business at CWA	Page 36	National Agriculture Day
Page 18	Hospital News	Page 37	Mobile Black Spot Priority
Page 19	Skin Cancer as a Workplace Hazard	Page 40	Calendar

## LAKES LINK NEWS 2017 Advertising Rates

	Non Profit Org	Members	Non Members
Classified	FREE	FREE	\$1 per line
Public Notice	FREE	N/A	N/A
1/8 page	FREE	FREE	\$12.50
1/4 Page	\$12.50	\$15.00	\$17.50
1/2 Page	\$20.00	\$25.00	\$30.00
Full Page	\$35.00	\$45.00	\$55.00
Insert (d/s)	\$30.00	\$30.00	\$40.00
Thank You's	FREE	FREE	FREE
Editorial	FREE	FREE	FREE
Colour	\$150.00	\$150.00	\$160.00

*Conditions do apply.*

### CRC Opening Hours

9:00am - 5pm

Closed from midday to

1pm for lunch when short staffed.

## Deadlines & Editions

All articles, news & advertisements are to be submitted to the Lake Grace Community Resource Centre by 3pm on Monday of paper week.

### Next Deadline

Monday 4th December

### Next Edition

Thursday 7th December



# Thanks

To the **very** dedicated team who volunteered their time to this edition of the Lakes Link News.

Elsie Bishop

Dick Phillips

Annie Slarke

Gwen Oliver

Thank you also to our many contributors of articles.

#### DISCLAIMER

- 1) No liability shall be incurred by the Lakes Link News by reason of any amendments to, or error or inaccuracy in, or the partial or total omission of an advertisement or by reason of delay or default or from any other cause whatsoever. If in the opinion of Lakes Link News the error clearly reduces the value of the advertisement and the advertiser notifies it to Lakes Link News within seven days of the publication date, then one correct insertion will be made without charge.
- 2) While the Lakes Link News aims to publish all material submitted, Lakes Link News reserves the right to refuse to publish or re-publish any contribution or advertisement without giving any reason.
- 3) No articles, letters or advertisements will be accepted which may appear to be defamatory or accusatory, or to favour one side in a legal dispute.
- 4) Lakes Link News reserves the right to shorten or otherwise amend any contribution other than advertisements.
- 5) The opinions, views and beliefs expressed in articles and other submissions to the Lakes Link News do not necessarily reflect the opinions, views or beliefs of the CRC staff or Committee.

***310 copies printed and sold each fortnight***

# Editorial

- ◇ In this edition we have included the subscription form for the 2018 Lakes Link News. We would appreciate it if you could return the completed form prior to the end of the year.
- ◇ We are still looking for more stalls for Late Night Shopping, the more the merrier. Stalls are free but you do have to supply your own table etc. If there are any groups who would like to use this as a fundraiser you are more than welcome.
- ◇ A quick word from CWA, the Senior Citizens Christmas Luncheon is on Thursday 7th December. RSVP is essential, please give me a call on 0427 651 310 by Thursday 30th November if you are going to attend.
- ◇ Thank you to everyone who has been filling in postcards for us as part of our postcard campaign. I will include an abridged version of our annual report in a future copy of the Link to demonstrate the activities that we're involved in throughout the year. If we've made your day at some point in the last 20+ years please drop in and fill out a **postcard**.
- ◇ Are you looking at wanting some word, excel or publisher training? We have set some training dates (see page four), if you are interested please give us a call and book in. The workshops are subsidised with no more than four in each class. We will also accommodate one on one classes
- ◇ Other workshops we have set is some one on one mobile phone training. Please give the CRC a call to get more information.
- ◇ Still looking for interest in Photoshop training. Please register your interest if you would like to take part.
- ◇ We are looking for **school Ball photos**. If your child has attended their Year 12 Ball and they're happy for the photo to go in the Link then we would love to have it. Please include the names of everyone in the photo, what school ball it is, where it was held and when it was held.

*Suzanne Reeves*



## Christmas Pack Price List



Hams - Half	Pork legs \$12.99/kg
Whole turkeys \$12.99/kg	Boned and rolled pork leg \$15.99/kg
Turkey Ballotines \$159.00 ea	Easy carve pork leg \$15.99/kg
Chicken Royale \$17.99/kg	Boned and rolled pork loin \$19.99/kg
Ducks \$25 ea	Rolled pork shoulder \$12.99/kg
Turkey rolls \$19.99/kg	Cranberry lamb legs \$17.99/kg
Turkins \$17.99/kg	
Boned and rolled chooks \$16.99/kg	
	* All boned and rolled meats can be plain or seasoned.

Orders must be in by Friday 15th December to ensure delivery in time for Christmas.

Phone: 08 9865 1225



## What's Happening?

- Condolences to the Bridger and Chapman family for the recent passing of Kerry Bridger on Saturday 11th November 2017.

## Bouncy Castle for Hire

Cost: \$165 for the day

Contact Peter Stoffberg on 0447 281 181 or the Lake Grace CRC on 9865 1470 for more information.



## Happy Birthday



23rd November	Allan Marshall
24th November	Amber McPherson
25th November	Kim McPherson
26th November	John O'Neill
27th November	Wendy Abrahall
28th November	Konnah Holmes
29th November	Jean Seaman
	Beau Bowron
30th November	Glenda Slarke
	Jodi Pearce
4th December	Emma Naisbitt (18)
6th December	Bill Willcocks

## Anniversaries



1st December

Debbie & John O'Neill

## Microsoft Office Workshops



### Word - Tabs & Tables

Tuesday 28th November

10am-11:30am

\$15 per person, 4 places available

### Word - Page Formatting

Monday 4th December

10am-11am

\$10 per person, 4 places available

### Word - Mail Merge

Monday 11th December

10am-11:30am

\$15 per person, 4 places available

**Beginner Word** - Wednesday 10th January

**Beginner Publisher** - Monday 15th January

**Beginner Excel** - Wednesday 24th January

For more information please call the Lake Grace CRC on 9865 1470.

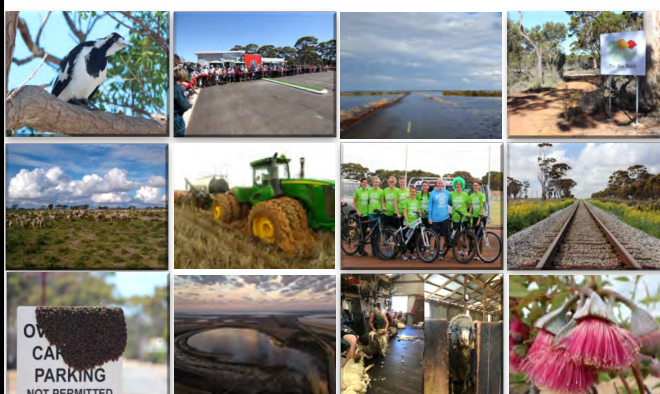


Lake Grace 2018 calendars are available from the Community Resource Centre. \$20 each.

*Calendars are created and printed at the Lake Grace Community Resource Centre. All photographs are from the Lake Grace area.*

*Great Christmas presents!!*

*Please give advance notice if wanting 5 or more calendars as we only keep a few on hand.*



*Lake Grace 2018 calendar*

# Getting To Know...

By Rosie Timperley

1. Name? Victoria Gracheva
2. Occupation? Finance Officer at Shire of Lake Grace
3. Where did you live before Lake Grace and what led you to moving here? Before Lake Grace I lived in Moscow. My husband's work led us here.
4. Which actress would play you in a movie? Angelina Jolie
5. Where would you suggest as a holiday destination? Thailand, where I met my soulmate. The weather is always beautiful, sea is warm and welcoming. Moreover it is quite cheap and people there are very accommodating.
6. What do you find the biggest difference between Australia and your original home country of Russia? The white stuff at home is snow and here it is the salt on the lakes
7. If you won \$10 million in the lotto and donated some to charity, which one would you choose and why? Royal Flying Doctor Service
8. Which season is your favourite? It is definitely summer!
9. Do you prefer TV or books? In Moscow I enjoyed reading as I had to commute to school and university by underground for at least 40 minutes one way. However now I prefer TV as it is more relaxing and I have more time at home.
10. Are you a dog or a cat person? Both. I had to leave my beautiful cat in Moscow and now, thanks to my husband, I have a lovely Kelpie puppy.



## Are you getting the best out of your mobile phone?

The **Lake Grace CRC** will be running some one-on-one mobile phone classes. Tutoring time will be for one hour for a subsidised cost of \$10.

### Lessons can include:

- Apps (use of, downloading)
- Using Facebook
- Emailing from your phone
- Updating and accessing your contacts list
- Sending images via message or email
- Ignoring tempting spam
- Alarms, reminders and the calendar
- Deleting messages & emails

### Lesson Dates and Times

Wednesday 29th November  
1:30pm and 3pm

Tuesday 12th December  
9:30am and 11am; 1:30pm and 3pm.

It is essential that you ring (or drop in) and book your lesson date/time at the Lake Grace Community Resource Centre - 9865 1470.

We need to know what kind of phone you have and what you want to learn (from the above list and if you have anything else in mind).



## Men's Shed Battery Drive

The Lake Grace Community Men's Shed is continuing with their battery drive. This is an ongoing revenue raising project which will contribute to the running of the Shed.

Batteries can be left at Phil Clarke's shed or you can contact Phil on 0427 651 155 or Allan Duckworth on 0427 651 567 if you require them to be picked up. Thank you for your ongoing support.



### Senior Citizens Christmas Luncheon

Thursday 7th December - Midday

Two Course Meal

Lakes Village Hall - \$30 / head

Please bring a gift under \$10

RSVP's are essential

RSVP to Suzanne Reeves 0427 651 310



# Wheelchairs For Kids

*Chloe Robertson*

Scarborough Rotary's Wheelchairs for Kids charity member, Bill Culbertson, visits Lake Grace annually to spread the word on the charity and to personally thank those who made blankets and donated or made toys for them. The Wheelchairs for Kids charity is one of a kind, being the only one in the world.

Margaret Carruthers opened the talk by thanking Bill Culbertson for coming down, the local women who, through CWA, made blankets and toys and to Bankwest for their generous donation.

Since opening in 1998, 39,062 wheelchairs and rugs have been manufactured and sent overseas to 78 different countries to a child in need.

There is one wheelchair model, the adjuster, which comes with a removable tray, one rug and a toy and instructions and tools. The wheelchairs cost \$200 to build, which is covered by a group from the child-in-need's country, who also pay for the shipping. 200 – 300 wheelchairs are manufactured a month, which means that 200 – 300 rugs and toys need to be made in that time.

The Scarborough Rotary's Wheelchairs for Kids charity is run by volunteers between the ages of 40 – 91. Many of these volunteers do not have trades.

Bill finished his talk by saying, "On behalf of the kids and Wheelchairs for Kids volunteers I would like to thank the Lake Grace CWA for the blankets and toys, you have all done an amazing job".

Margaret Carruthers thanked Bill for his fascinating explanation and to everyone who got involved.

The Lake Grace community donated 26 toys and 58 blankets.

If you would like to know more about this project or would like to have a look at the books then please drop into the CRC and have a read. If you would like to make some blankets they need to be 1m x 1m and to be made with synthetic yarn (not wool) for ease of washing.

If you're not sure that you want to create any blankets we are always looking for donations of yarn so if you have some in the cupboard we're more than happy to take it off your hands.

If you would like to donate you can visit the website [www.wheelchairsforkids.org](http://www.wheelchairsforkids.org) and click on donate.



**Photo: Bill Culbertson, Dot Kennedy, Gwen Oliver, Dorothy Reid, Phyllis Dunham, Sally Nicholls, Elsie Bishop, Joyce Gilson, Lorna Thompson.**

**Sitting in front: Mary Naisbitt, Rita Marshall.**



## Lake Grace Community Christmas Tree

Thursday 14th December  
To coincide with Community Late Night Shopping

If you would like to receive your gifts as a family please ask Santa to wrap the presents together and label with all children's names.

Santa Drop Off at the CRC.

Value of gift not to exceed \$20.

Enquiries  
Kelly Callope 0447 013 498



# Swimming Pool Open Day

Rosie Timperley

With a maximum temperature of 35° and low wind speed, it was a perfect day to go for a swim on the opening day of Lake Grace's swimming pool which fell on Saturday, 11<sup>th</sup> November. The lifeguard on duty for the day, Matt Smith, welcomed 77 people through the front doors and out in to Lake Grace's poolside paradise! Swimmers enjoyed a comfortable water temperature of 26° as they swam and splashed about in the 50m Olympic sized pool while the smaller children made use of the toddler/infant pools. The new sand under the playground and the beach volleyball were also popular on the day with both of them being utilised. As the opening day coincided with Remembrance Day, colourful steel poppies were displayed in the garden to acknowledge this special event.

Picking up where they left off last year, the LG swimming pool is registered with the program "Watch Around Water", an accredited facility that campaigns to educate the public about active supervision. The Watch Around the Water slogan, "*Parents supervise, lifeguards save lives*" encourages parents and supervisors to be responsible in their role when taking children swimming. This has been a great success in Lake Grace and the intended outcome is for everyone to enjoy a safe and fun summer swimming season.



**Above: Toddler/infant pool**

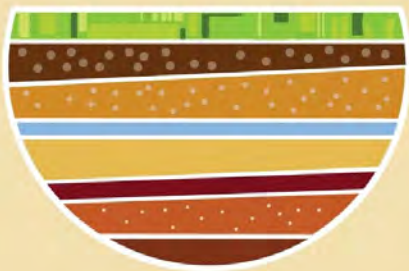


**Above: Poppies for Remembrance Day**

**Below: Swimming pool ready for the summer season of swimmers**







# Talkin' Soil Health

When: **13-14th March 2018**

Where: **Dalwallinu, WA**

When: **15-16th March 2018**

Where: **Katanning, WA**

**DOB  
IN A  
MATE**



**Help us find the farmers who are managing  
profitable and healthy soils**

Winners will be selected from each participating NRM Region and will receive an all expenses paid trip to the closest Talkin' Soil Health Conference\*.

A short film featuring the winners will also be shown at the event.

**Dob in your mate or nominate yourself.**

**Nomination form at [www.soilhealth.com.au](http://www.soilhealth.com.au)**

**Closes: 11th December 2017**

\* Northern Agricultural Catchments Council, Southcoast NRM, South West Catchments Council, Wheatbelt NRM

**[www.soilhealth.com.au](http://www.soilhealth.com.au)**





# ATAR Exams Finished at Narrogin Ag School

## Media Release

While the rest of the school has been busy with hay baling and harvest preparation, six students have been completing their Year 12 ATAR exams at the WA College of Agriculture - Narrogin.

Studying English, Mathematic Applications, Animal Production Systems and Plant Production Systems has been a challenging but rewarding experience for the students.

Principal, Stephen Watt, is "proud that they have persevered through two years of the course."

"It's fantastic that we have students willing to put themselves out to do a higher course. When their friends have left to start jobs and apprenticeships, they have stayed at school and committed to their studies."

Most of the group will be helping with harvest on their family farms over summer before starting apprenticeships, jobs or university in 2018.



**Above are Liam Bell, Jess Appelbee, Clayton Clunie and Emmerson Smith.**

The school will formally farewell the Class of 2017 with an award ceremony on 17 November.

## CCL Hardware

8 Stubbs Street

Lake Grace WA 6353



**GO WHERE THE TRADIES GO**

**The proper hardware store**

### Opening Hours

**Monday—Friday: 7:30am—5:30pm**

**Saturday & Sunday: 8:30am—11:30am**

### Local Stockists of:

- ☐ Kleenheat Gas
- ☐ Nursery supplies & plants
- ☐ Bulk soils & mulches
- ☐ Tools, hardware, steel & timber.

# Male Dolphins Present Gifts to Attract Females

Media Release

Researchers from The University of Western Australia have captured a rare sexual display: evidence of male humpback dolphins presenting females with large marine sponges in an apparent effort to mate.

Scientists from UWA's School of Biological Sciences, the University of Zurich and Murdoch University conducted a decade of boat-based research on coastal dolphins across north-western Australia.

They documented adult male Australian humpback dolphins presenting large marine sponges to females, as well as performing visual and acoustic displays. It's the first time the behaviour has been documented in this species.

Their first observation was between a male and female dolphin and her calf. The male dolphin dived down to remove a large marine sponge fixed to the seafloor, balanced it on his beak and pushed it toward the female.

The use of objects in sexual displays by non-human mammals is rare and the researchers believe it could be a display of the male's strength and quality as a mating partner.

Lead author Dr Simon Allen from UWA's School of Biological Sciences, said the findings suggested an as yet unrecognised level of social complexity in humpback dolphins.

"We were at first perplexed to witness these intriguing behavioural displays by male humpback dolphins, but as we undertook successive field trips over the years, the evidence mounted," Dr Allen said.

"Here we have some of the most socially complex animals on the planet using sponges, not as a foraging tool, but as a gift, a display of his quality, or perhaps even as a threat in the behavioural contexts of socialising and mating."

Co-author Dr Stephanie King said on occasion, some large adult male dolphins also appeared to be working together in pairs.

"The formation of alliances between adult males for the purposes of coercing females is uncommon, since mating success cannot be shared," Dr King said.

"This is a new finding for this species, and presents an exciting avenue for future research."

Next the researchers hope to determine (through behavioural observation and genetics) whether or not presenting sponges and engaging in sexual displays improves an individual's chance of mating success.

The [study](#) was published in *Scientific Reports*.

## Lake Grace Weather



Date	Min	Max	Rain
8/11	16.1	33.1	
9/11	18.9	29.9	
10/11	14.4	33.5	
11/11	16.2	35.3	
12/11	16.7	26.7	8.2
13/11	13.7	25.7	
14/11	12.2	22.8	
15/11	8.3	26.4	
16/11	13.1	34.2	
17/11	19.6	33.6	2.4
18/11	15.6	26.6	5.4
19/11	15.1	29.3	
20/11	13.3	28.3	
21/11	14.7	23.3	



**WALKERS HILL**  
*Vineyard*

**OPEN**  
most days

Thursday – Sunday      10am – 4pm  
Thursdays                1pm-4pm  
Monday & Tuesdays      CLOSED

*Come & enjoy a tea/coffee with homemade cake*  
Bookings not essential, but appreciated.  
Phone: 0447 651 418



# Melville Merge Festival Displays Kerrie's Art

*Rosie Timperley*

Lake Grace's local artist Kerrie Argent accepted an invitation to the Melville Merge Festival to display her artwork, titled "Homeless." The Merge Festival is a one day event and aims to bring the community together through pop up venues, art displays, live music, cabarets and many more fun activities. Kerrie followed on with her 'Homeless' sculptures which she previously had displayed at Sculptures By the Sea earlier in the year. For the Merge Festival, Kerrie also had a sixth teepee she created out of unloved, non-recyclable, knitted jumpers; wool; cotton and acrylic generously donated by community members. Festival goers were able to take part in finishing off the teepee and while they certainly made a lot of headway on it, the teepee wasn't quite finished and is an ongoing project. Kerrie's

thought-provoking sculptures certainly make a powerful point about the excess of unwanted textiles contributing to landfill.



**Above: 'Homeless' teepee sculptures on display**



**Above: Kerrie Argent with her 'Homeless' teepee sculptures**

**Below: Jayne Argent helps to set up the sculptures.**



**Below: Interior view of teepee**







# Lake Grace District High School News

## Albany Cadets Camp

On Monday November 13<sup>th</sup>, the Cadet Students participated on a three day camp to Albany. The camp involved a visit to The National Anzac Centre to commemorate Remembrance Day. The students were given cards with a soldier whom they were able to learn about along the way; how old they were, their involvement and discovering if the soldier returned or not from the war. They enjoyed the interactive tour, listening and reading about the troops and the ship convoys, were able to search for any ancestors and leave a tribute to those who served.

The remainder of the camp was spent at Camp Quaranup, where students were able to learn more about Albany's settlement and the claiming of the Vancouver Peninsula. We had a busy couple of days roving through the bush looking for check points, participating in an archery competition between the teachers and the students, raft building, canoeing and searching for geocaches using GPS points.

Albany managed to deliver some amazing weather across the week, especially when walking along the beaches and going for a swim at Point Possession. Needless to say the students had a wonderful time and it was a very quiet bus trip home. Thank you to Genni Curtin for coming and supporting the students on the camp. As always, you are a wonderful addition to have around!

*Billie MacTaggart*







# POLICE NEWS

LAKE GRACE POLICE STATION  
56 STUBBS STREET, LAKE GRACE. 6353  
Phone : 9890 2000 Fax : 9865 1429

Email: [Lake.Grace.Police.Station@police.wa.gov.au](mailto:Lake.Grace.Police.Station@police.wa.gov.au)

Personnel: Sgt Dave Ellis, SC Tara Spencer, S/C Cameron Hobson

G'day all,

Apologies for the hiatus in the newsletters, but we're back with a full edition. So, please bear with me as I cover a few areas of note in recent weeks.

We had a stealing from the shearer's quarters a few weeks back, where some equipment of high value was taken. Now, as yet we haven't located the culprit, but what we learned from this particular incident is how easy it is for valuables to go missing if not put away or locked up. The wider Lake Grace area is not devoid of light fingered individuals and I would urge you all to be mindful of leaving things unlocked on verandas or leaving sheds wide open. Especially as we approach Christmas I would encourage you to put valued Christmas presents in somewhere secure. We don't get very many burglaries in any of our towns but that doesn't mean it won't happen.

There have been a couple of incidents at the Lake Grace pub over the last couple of months where behaviour has fallen well below the standards I have come to expect. From drunken scuffles to setting clothing alight in Stubbs Street the behaviour of some has been absolutely rubbish. Michael and Maggie are doing their best to run a friendly and vibrant pub but their efforts are ruined by a few who lack the maturity to realise what their limit is. We have given out \$2400 worth of infringements for 2 incidents – an expensive night for some. Those that have been involved are also barred from the pub and the bottle shop, and state wide barring notices are being sought for 3 individuals involved – in other words they won't be able to buy alcohol anywhere in WA unless they want a \$10,000 fine. Bad behaviour has never been tolerated by this station, and repeat offenders will end up before the Magistrate. We are still seeking witnesses to the fire incident from Friday the 17<sup>th</sup> November, so if you saw anything drop us a line.

An area of concern has been highlighted by several members of the community in respect of "Cyber Bullying" – as it is commonly known. I intend to write an article for the next newsletter to address some issues around this subject so that you are all better informed and given all the correct information I have available. As with all things it is a big subject and is something we are getting to grips with in the law enforcement community – new policies and legislation are emerging and we are dealing with a relatively new phenomenon. Watch this space.

Lake Grace had a recent visit by the WA Police Bomb squad a few weeks ago – much to my surprise! It turns out there was some dodgy substance (don't ask - I have no idea what it was even after an explanation) at the old

mission hospital and no one knew quite what to do with it. Step forward WA Police's finest bomb technicians and moments later the problem was solved with a controlled explosion. Not something we get too much of out here!

Finally I just wanted to add my thanks to all the Chircop kids (and others) who spent hours on their bikes looking for our family cat. He returned home a little thinner, but with the help of some sightings from some budding Detectives we knew our critter was alive and well, just not interested in being at home with his human family!

As always we can be contacted at the station on **9890 2000** and in the case of an emergency dial **000** as per normal. If you get Albany Station a message can be left for us with them – please be patient!

Till next time

Sergeant David Ellis

## McKenzie Rural Contracting

Rural fencing

- \* CATTLE
- \* SHEEP
- \* HORSES
- \* HOUSEHOLD & SECURITY FENCING
- \* CATTLE & SHEEP YARD CONSTRUCTION
- \* CIVIL CONSTRUCTION & MAINTENANCE

Well equipped and can supply material.  
We service Lake Grace & all surrounding areas.

- \* Dingo loader hire      \* Posthole digger
- \* Trencher                      \* Yard Clean-ups

For all enquiries please call:

Jeff - 0458 693 014

Symone - 0437 430 093

# LATE NIGHT SHOPPING 2017

Thursday 14th December

4:30pm - 7:30pm



## So far we definitely have...

- Santa booked
- Curries & Rice / Hot Beef Rolls
- Bouncy Castle
- Sand 'N' Salt / Visitor Centre open
- Wineries
- Non alcoholic beverages available including Mocktail Bar
- Craft Display
- LG Artist Group Pop-Up Shop
- Bessemerware
- KMH Essential Oils
- Kokodama Plants
- Sausage sizzle
- Live Music
- Bankwest (win a \$ 1k bank account)
- Wheatbelt Men's Health Pit Stop
- Muddy Creek Soaps
- Kulin Community Bank
- Kulay by Kathryn Nolan
- Display of vintage/antique cars
- Clothing and Brazilian Foods
- Tupperware Store

## So far we might have....

- Showbags
- Lucky Dip
- Disco for the kids (3:15-4:30/5pm)

## We are looking for

- Santa assistant
- Face painter
- Stalls (baked goods, plants, craft etc.)
- Anyone willing to oversee children's activities

If you would like to book a stall or display  
please contact the Lake Grace Community  
Resource Centre

on 9865 1470 or  
[lakegracecrc@westnet.com.au](mailto:lakegracecrc@westnet.com.au)



## Lake Grace Community Harvest 2017 (Cont.)



*Community  
Harvest 2017 .*

*Photo credit  
Grant O'Neill.*



### **LivingWorks Education Inc Applied Suicide Intervention Skills Training (ASIST)**

ASIST is a two-day interactive workshop in suicide first-aid. ASIST teaches participants to recognize when someone may be at risk of suicide and work with them to create a plan that will support their immediate safety.

*ASIST is a resource for the whole community. It helps people apply suicide first-aid in many settings: with family, friends, co-workers, and teammates, as well as formal caregiving roles. Many organisations have incorporated ASIST into professional development for their employees.*

**When:** 4<sup>th</sup> & 5<sup>th</sup> December 2017

**Where:** St Mary's Cathedral, 17 Victoria Square, Perth **Cost:** \$300

Training facilitated by **National Centre for Suicide Prevention Training (WA) Inc**

### **Register your interest for this or upcoming ASIST courses**

Contact Lorna Hirsch 0411 555 422 email [lorna.a.hirsch@gmail.com](mailto:lorna.a.hirsch@gmail.com) or

Davina Gossage 0467 584 477 email [davinag@bigpond.com](mailto:davinag@bigpond.com) for more information



Specialising in all low voltage electrical jobs for cars, trucks, boats and all agricultural machinery in Lake Grace and surrounding areas. A list of just some of the jobs we can provide:

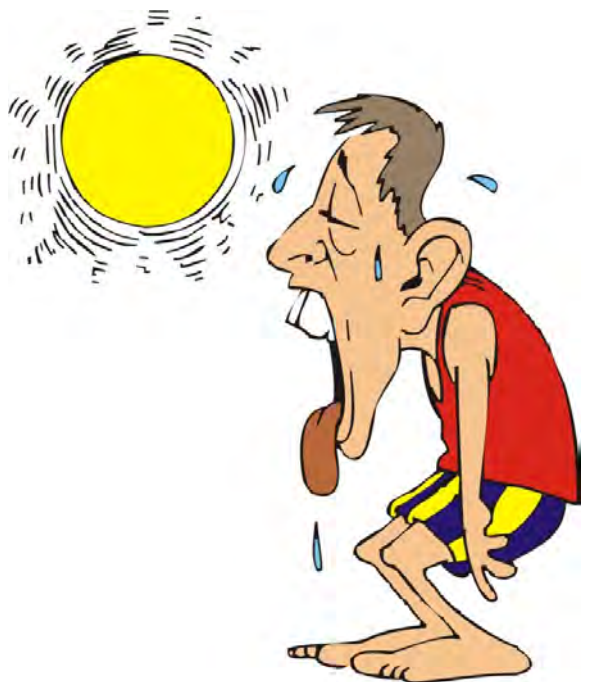
- Fit GPS auto steer systems, specialising in Trimble and Top Con brands. Swap auto steer systems between machines.
- Swap monitors from machinery
- Repair/Service boomspray electrics
- Install/Service A/C systems
- Test alternators and batteries
- Fit dual battery/solar systems to cars, caravans and camper trailers
- Fit/Supply trailer brake systems
- Supply/Fit camera kits eg. Reverse, Truck trailer or chaser bin auger
- Supply/Fit spotlights or worklights for cars, tractors, headers etc.
- Manufacture wiring harnesses
- Install 4x4 accessories eg. LED lights, power sockets, winches

We are now in Spring and the warmer weather is fast approaching! Now is the time to check the A/C in all of your vehicles. If you suspect it may not be working correctly please contact me. I can test/service all automotive A/C systems using quality replacement parts.

For any questions or queries please ring Aaron Carruthers on 0429905452

RTA NO: AU42693

LIC NO: L121418





# All Business at CWA

*Suzanne Reeves*

CWA Ladies were revved up for their recent stall, producing a marvellous array of baked goods. Also on sale were plants and raffle tickets and a fabulous selection of bags that were made by a group of environmentally aware ladies who are acting on their concern for the plethora of plastic waste ending up in our waterways and landfill.

Prior to the stall CWA members elected for some of the proceeds to be donated to the Royal Flying Doctor Service with the remainder to be put toward the upkeep of the CWA premises. A generous community who were tempted by the produce on display helped CWA raise the fantastic amount of \$894.50. From this, a \$400 donation will be made to the Royal Flying Doctor Service.

First prize from the raffle, which was a magnificent hamper went to Mary Naisbitt while the lovely set of coffee mugs went to Lee Duckworth. The stall was a wonderful fundraiser for CWA and we thank everyone for their support.



*Photo: The CWA ladies are kept busy at their stall.*

## lake grace engineering

### **\*Hydraulic Hose Crimping & Fittings**

### **\*Qualified Machinist for Lathe & Mill work including Hydraulic Cylinder repairs**

\*General Steel Repairs & Fabrication

\*Stainless Steel Fabrication

\*Insurance Work

\*Aluminium Fabrication including boat repairs, boat trailers, canopies & toolboxes

\*Sandblasting & Spray Painting

\*Transport Equipment Fabrication & Repairs

\*New Agricultural Machinery (Seed/Super Bins, Chaser Bins, Augers & Comb Trailers etc)

Ph: (08) 98 651 845 / Fax: (08) 98 651 846

Email: [adminlge@bigpond.com](mailto:adminlge@bigpond.com)



# LAKE GRACE HOSPITAL



providing 24 hour Emergency Health Care Services  
and Community Care Services to Lake Grace and the surrounding district

Telephone: **9890 2222** Fax: **9890 2202**

## HACC & MPS Activity Programs

### 4th Friday Activity

**Friday 24th November**

Lakes Village Hall

Time: 10am—1.30pm

RSVP by 21st November for catering—  
98902222



### SwimAbility

**Monday 27th November**

Call the hospital if you would like to join  
this hydrotherapy program



### Bus Outing

Friday 8th December

Call the hospital to book

### Chair Aerobics

**Every Tuesday @ 10.30am**

At the Lakes Village Hall

*Suitable for people with limited mobility who want to  
keep active!*



### Wednesday Morning Tea & Activity

Hospital Activity Room every Wednesday

Time: 10am—11.30am

For morning tea and an activity with residents

## Child Health Clinic

For all child health or immunisation enquiries  
please call Di Poultney  
at the Lake Grace Clinic on  
**ph: 9890 2246**

## Move more ... Sit less Every day!

Being [physically active](#) and limiting your [sedentary behaviour](#) every day is essential for your health and wellbeing and is good for you in so many ways. It can create opportunities for a range of fun experiences, make you feel good, improve your health, and be a great way to relax and enjoy the company of your friends and family.

The Australian Government Department of Health website provides information about physical activity and sedentary behaviour, and how both of these can affect your health. You can access [Australia's Physical Activity and Sedentary Behaviour Guidelines](#) for children, young people, adults and older Australians. The Guidelines provide information about the health benefits of leading an active lifestyle, as well as offering suggestions for how to incorporate physical activity and minimise sedentary behaviour in your everyday life.

## Medication Safety

There is a lot you can do to make sure you get the most benefit from your medication and stay safe in the process:

- DO take each medication exactly as it has been prescribed.
- DO make sure that all your doctors know about all your medications.
- DO let your doctors know about any other over-the-counter medications, vitamins, supplements or herbs that you use.
- DO try to use the same pharmacy to fill all your prescriptions, so that they can help you keep track of everything you're taking.
- DO keep medications out of the reach of children and pets.

Six Drug DON'Ts...

- DON'T change your medication dose or schedule without talking with your doctor.
- DON'T use medication prescribed for someone else.
- DON'T crush or break pills unless your doctor instructs you to do so.
- DON'T use medication that has passed its expiration date.
- DON'T store your medications in locations that are humid, too hot or too cold.



# Skin Cancer as a Workplace Hazard



## Media Release

Australia has one of the highest levels of skin cancer in the world. At least two in every three Australians will develop skin cancer before they reach the age of 70.

The workplace is a major source of exposure for many adult Australians, with outdoor workers receiving between five and ten times more sun exposure than indoor workers. So it is not surprising that outdoor workers who spend long periods of time working in the sun have a higher than average risk of skin cancer.

National Skin Cancer Action Week is coming up and the Cancer Council is offering workplace talks that will discuss cancer prevention (slip, slop, slap, slide & seek), explain how to use the UV index, how to check for skin cancer and how much sun is enough for healthy vitamin D levels. Cancer Council WA can also work with your organisation to implement SunSmart policies to protect employers and employees.

Early detection is an important factor in the positive treatment for all cancers. Recognising the early signs of skin cancer can save a life!

Talks can run for 10-40 minutes depending on how much time is available at your workplace. Information given can be adapted to suit your work environment; indoor or outdoors and can be held at anytime to suit.

If your workplace is interested in receiving a free SunSmart workplace talk for your employees please contact me, happy to discuss further.

Karen Hansen | Wheatbelt Region  
Cancer Council Western Australia  
T: + 9574 5392 | Email: [khansen@cancerwa.asn.au](mailto:khansen@cancerwa.asn.au)

## Katanning Vet Clinic

Phone: 08 9821 1471  
Fax: 08 9821 1473  
A/H Emergencies: 0427 017 462

3/114 Clive Street  
PO Box 841  
Katanning WA 6317  
[www.kojonupvethospital.com.au](http://www.kojonupvethospital.com.au)  
[kvc@kojonupvethospital.com.au](mailto:kvc@kojonupvethospital.com.au)



STUBBY'S ELECTRICAL PTY LTD T/AS

# OUTBACK

LIC NO EC 004197



For all your domestic, rural and industrial electrical installations and repairs.

Split system air conditioning installation and decommissioning.

Large range of Australian brand LED floodlights, downlights, hibays and fluorescent replacements.

Ditchwitch hire and cable location.

With over thirty years experience in Lake Grace and surrounding areas contact Stubby or Reid anytime.

**Stubby 0429 651 092 or Reid 0429 651 069**

**Office 9865 1092 all hours Fax 9865 1328**

LIC NO :EC004197

RTA NO :AU29828

# LIONS CHRISTMAS CAKES

Lions Christmas cakes and Puddings are an important fund raising project of Lions Clubs in Australia. Funds raised are donated to projects that benefit the community locally and nationally.

The Lions Christmas Cake and Pudding program has been a major fund raising project of Lions Australia since 1965 and raised more than \$56mill. The proceeds from this project are donated back into the community on great causes including Blindness Prevention and Vision improvement projects, Medical Research, Children's Mobility Foundation, Eye Health Program, Hearing Programs, Disaster Relief, Aged Care, Drug Awareness, Youth Programs etc.

You may rest assured that should you purchase a product from this program the proceeds generated will be put to good use in the community.

Lions Christmas cakes and Puddings from Lake Grace Lions club are available in following outlets.

1. Lake Grace Pharmacy Store. P:98652641
2. Lake Grace Post Office P:98651047
3. Maalouf Ford. 1.5 kg cakes only, 98 651 261
4. Walter Perry, Cakes Chairman, 0448 795 070

You will have following options to buy Lion Christmas cakes for yourself or as a valuable gift to your loved ones.

Lions Christmas Cake 1.5kg \$17.00

Lions Christmas Cake 1kg \$12.00

Lions Christmas Pudding 900gm \$12.00

Centenary Tin containing a 1.5kg Cake \$22.00





## Shire of Lake Grace

## Community News



PO Box 50, Lake Grace WA 6353 Ph: (08) 9890 2500 Fax: (08) 9890 2599

Email: [shire@lakegrace.wa.gov.au](mailto:shire@lakegrace.wa.gov.au)



## CEO's Corner

### Flooding Event – February 2017

On Tuesday 14 November the first Start Up meeting was held with all successful contractors involved in the restoration works for the WANDRRA claim. This meeting was critical to ensure that all appointed contractors were aware of the administrative requirements, which come with the funding. It is imperative that we have the administrative processes correct, or payments will be delayed.

The process is, Contractors undertake the work; the Shire pays the contractors and then submits a claim for reimbursement. All works are required just to bring the road to its original condition; no betterment can be undertaken. If Main Roads WA is satisfied with our claim, we will be reimbursed the value of the claim.

For current road closures please refer to the Shire's website [www.lakegrace.wa.gov.au](http://www.lakegrace.wa.gov.au) or Facebook page for a list of roads that are closed within the Shire.

### 80km Road Restrictions

With harvest in full swing all road users are asked to exercise extreme caution on our road network. Many useable roads are still subject to damage including shoulder scouring, soft edges with single lane use only.

All vehicles greater than 4.5 tonnes are restricted to a maximum speed of 80 km/hr on all gravel roads within the Shire of Lake Grace from 1 November to 31 December 2017 inclusive.

### Manager Infrastructure Services

I would like to extend a warm welcome to Dave Holland, Manager Infrastructure Services, who commenced work on Monday 13 November. Dave has worked in Local Government for a considerable amount of time at the Shire of Bruce Rock, City of Stirling and most recently Shire of Victoria Plains. Please make yourself known and welcome Dave to our community.

### Lake Grace Independent Living Units

The community is invited to the official opening of the Lake Grace Independent Living Units to be held on Thursday 14 December at 11.00am, corner Lawson and Bennett Street, Lake Grace. Please RSVP at the Shire Office on 08 9890 2500 by 11 December 2017 if you wish to attend.

### Building and Maintenance Team

This fortnight, Wayne Trawinski, the Shire's Building and Maintenance Supervisor reports that the Lake Grace Independent Living Units are now complete. Works are continuing at the Lake Grace Sports Pavilion including:

- Hot mix complete;
- Infill above kitchen complete and ceiling fixed;
- Range hood and splashback for ovens installed;
- Electrical throughout old section nearing completion; and,
- Preparation for tiling underway.

Other maintenance completed over the past fortnight:

- Lake King Hall;
- Lake King Public Toilets;
- Lake Grace Swimming Pool;
- Shire Administration Office; and,
- Lake Grace Old Sports Pavilion.

Scheduled maintenance (gutter cleaning) will be commencing at:

- Lake King;
- Varley;
- Newdegate;
- Pingaring; and,
- Lake Grace.

### Road Works

During the past fortnight the construction crew has been on White Dam Road carrying out clearing, extending culverts, installing headwalls and gravel sheeting. The Lake Grace maintenance grader operator has been working with the construction team over the past weeks.

The Lake King grading contractor has carried out works on Old Newdegate Road, Fitzgerald Road and Milstead Road. Due to the high volume of traffic on Fitzgerald Road the contractor will be grading this road again.

The Newdegate grading contractor, over the past fortnight has worked on Whurr Road, Magenta Road, Taylor Road and south end of Old Ravensthorpe Road. They will be carrying out school bus routes inspections and moving on to Aylemore Road.

### Parks and Gardens

The town maintenance crew has carried out mowing of lawns, whipper snipping and weeding to the public and open space areas within the Lake Grace townsite. The crew has been to the cemetery, Apex Park and

*Continued over...*

## Shire of Lake Grace Community News *Cont.*

entry statements to carry out general garden maintenance.

Maintenance at the town oval and medical centre has been carried out.

The team has travelled out to Lake King and carried out mowing, weeding and spraying to public spaces, the Lake King Sports Pavilion and general maintenance at the Lake King cemetery.

### Newdegate and Lake Grace Swimming Pools

Both pools are now open. Congratulations to Bridget for getting the water quality of the pool up to scratch so quickly after difficulties with installation of the new pump. Well done. Both pools are looking great. We hope you all enjoy the facilities provided over the coming months.

*Denise Gobbart*  
Chief Executive Officer

## Caltrop in Townsites

Following the recent rainfall the townsites have experienced an outbreak of caltrop.

### What You Can Do

You can assist by spraying and/or removing any caltrop on your property or verge, please do not put into your rubbish bin as this will contaminate our waste facility and the neighbouring farm lands.

### Disposing of Caltrop Plants

To dispose of any removed caltrop plants please:

- place them into a marked and sealed plastic bag and keep them until winter when they can be safely burnt

or

- take them to the Shire Depot, at Absolon Street Lake Grace, where there is a specially marked caltrop wheelie bin facility located just outside the main depot gate.



## Hazard Perception Test Update

Due to an error with the Hazard Perception Test Update, Hazard Perception Tests are currently not available through the Shire of Lake Grace.

Please contact the Shire of Lake Grace if you have any further queries on this matter.

The Department of Transport Update to Licensing New & Old Vehicles through inspections has recently changed. Please note that the potential owner of the vehicle is to be present at the Shire Office at the time of application and will need to provide primary identification (driver's licence) to licensing staff for the application process to be completed.

## Christmas Trading Hours

All traders have a right to exercise individual discretion whether to open or not during the proposed Christmas/New Year trading extension (Monday 4 December 2017 until Monday 1 January 2018 inclusive) as listed below.

- |                     |                               |
|---------------------|-------------------------------|
| 8.00 am to 9.00 pm  | - Monday to Friday            |
| 8.00 am to 5.00 pm  | - Saturday                    |
| 11.00 am to 5.00 pm | - Sundays and public holidays |
| Christmas Day       | - Closed                      |

## Cars on Display

How many Classic cars are in the district?

Is there a car in your back shed that is:

- Antique
- Vintage
- Veteran or
- Classic



Antique - cars made before 1919

Vintage - made between 1919 and 1930s

Veteran - built before the First World War

Classic - cars 20 years and older

We all enjoy looking at cars from the past, so if you have an "old" car please consider bringing it into town for people to admire.

The Shire in collaboration with the Lake Grace Community Resource Centre is looking for cars to display in a designated area during the Lake Grace Christmas Festival AKA as Late Night Shopping Thursday 14 December 2017.

If you have a car you would like to display and for more information contact Linda or Cheryl on 9890 2500.

## Roads During Harvest

All vehicles greater than 4.5t are restricted to a maximum speed of 80km/hr on all unsealed roads within the Shire of Lake Grace from 01/11/2017 to 31/12/2017 inclusive.

Due to the Flood Event in February, a number of roads within the Shire require shoulder reinstatement. There are numerous areas with soft edges and scouring. Roads may also be single lane only.

It is anticipated that Flood Event repair works will commence mid-November. Be alert and considerate of other road users.



Shire of Lake Grace Community News *Cont.***Office Opening Hours**

Monday - Tuesday - Wednesday - Friday  
8.30am - 4.30pm

Thursday 8.30am - 4.00pm  
Staff can be contacted by phone between 8am - 5pm.

**Transport & Licensing**

All licensing payments are to be made in person at the Shire of Lake Grace Administration building.

**Monday, Tuesday and Wednesday 8.30am - 4.15pm**  
**Thursday and Friday 8.30am - 4.00pm**

As an agency we process the majority of transactions, including; renewals, transfers, number plate orders, boat registration renewals and new license applications.

Please ensure you arrive at the counter with sufficient time for your transaction to be completed by closing time, this is because it is necessary for staff to reconcile Department of Transport transactions each day. Please keep in mind that farm equipment and Learners Permit transactions can take up to 45 minutes or more.

**Driving Assessor**

The Practical Driving Assessor (PDA) will be at the Shire of Lake Grace Office on:

**Friday - 1 December 2017**

**Friday - January 2018** to be confirmed

Bookings are essential for all Practical Driver's Licence Assessments and we advise that there is a waiting list, so booking in advance is highly recommended.

Lake Grace has one assessment day each month held on the first Friday of the month.

For more information visit [www.transport.wa.gov.au](http://www.transport.wa.gov.au).

**Firearm Licence**

All firearm licensing including the payment of licence renewals is now done at the Lake Grace Post Office.

**Building Surveyor**

Shire Building Surveyor, Josiah Farrell will be available at the Shire Office on the following dates:

**Tuesday 28 November 2017**

**Tuesday 12 December 2017**

For an appointment contact Josiah on 0438 811 944.

**Environmental Health Officer**

For an appointment with the Shire's Environmental Health Officer, Will Pearce, please contact the Shire on 9890 2500 or email [shire@lakegrace.wa.gov.au](mailto:shire@lakegrace.wa.gov.au).

**Tip Opening Hours****Lake Grace**

Monday & Wednesday 9am - 2pm  
Saturday & Sunday 9am - 4pm

**Newdegate**

Wednesday 9am - 1pm  
Saturday 9am - 1pm

**Lake King & Varley**

Open Every Day

**Waste & Recycling Pick up Dates**

Household Waste Collection is a weekly service and collected each Monday for Lake Grace, Newdegate, Lake King & Varley.

Recycling is a fortnightly service and alternates between Lake Grace & Newdegate. See below for the upcoming recycling collection dates.

Lake Grace	Newdegate
27 November	4 December
11 December	18 December

**Please Note:** There is no kerbside recycling collection service in Lake King or Varley.

For more information on Waste Management visit the Shire's website.

**Library Hours**

**Lake Grace Public Library** School Place Absolon St  
Monday - Thursday 9am - 5pm

Closed for lunch 12.30 - 1pm

**School Holidays**

Tuesday & Thursday 9am - 5pm Lunch 12.30 - 1pm

**Newdegate Public Library** Collier St

Monday - Thursday 8.30am - 4.30pm

Closed for lunch 12noon - 1pm

Friday 9am - 2pm

**Lake King Library** Newdegate/Ravensthorpe Rd

Tuesday and Thursday 8.30am - 3.30pm

*Everyone welcome*



Check out our Facebook page

[www.facebook.com/ShireofLakeGrace](http://www.facebook.com/ShireofLakeGrace)



Check out our website

[www.lakegrace.wa.gov.au](http://www.lakegrace.wa.gov.au)

## Bushfire Season

### Harvest Bans Zones

**All fire zones in the Shire of Lake Grace will be on Channel 11 in an event of a fire.**

- When a fire occurs on a property in a zone, a *Harvest and Vehicle Movement Ban* will be imposed for the whole zone until the fire is deemed safe, and the *Harvest and Vehicle Movement Ban* is lifted.
- When a fire occurs on a property neighbouring a zone boundary, both zones will have a *Harvest and Vehicle Movement Ban* imposed until the fire is deemed safe, and the *Harvest and Vehicle Movement Ban* is lifted.

### Harvest and Vehicle Movement Ban SMS:

To register please contact the Shire of Lake Grace on (08) 9890 2500.

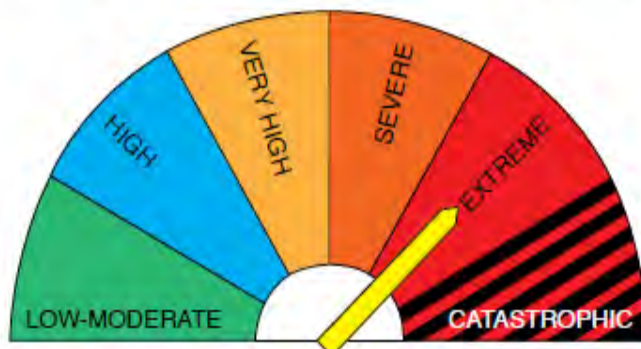
**Please Note:** Do not reply to the *Harvest and Vehicle Movement Ban* notification SMS message.

### Power Outages

Customers affected by power outages lasting 12 continuous hours or more, may be eligible for an \$80 service standard payment.

To find out if you are eligible go to: <https://westernpower.com.au/power-outages/make-a-claim/>

### FIRE DANGER RATING TODAY



The **Fire Danger Rating** is based on the weather forecast and gives you advice about the level of bushfire threat on a particular day.

**Catastrophic:** The worst conditions for a fire. Homes are not designed or built to withstand a fire in these conditions. The only safe place is away from the bushfire area.

**Extreme Severe or Very High:** Seek out information and be ready to leave or stay and actively defend your property if a fire starts. Only stay if you are 100% prepared.

**High or Low to Moderate:** Be vigilant. Check your fire plan and continue to monitor conditions as they can change quickly.

## Shire Christmas & New Year Opening Hours

The Shire of Lake Grace Office will be closed from Saturday 23 December 2017  
and re-open Tuesday 2 January 2018 at 8:30am.

Monday	25 December 2017	.....Office Closed
Tuesday	26 December 2017	.....Office Closed
Wednesday	27 December 2017	.....Office Closed

Thursday	28 December 2017	.....Office Closed
Friday	29 December 2017	.....Office Closed
Monday	1 January 2018	.....Office Closed

### Please Note:

Licensing services will not be available during this time. Licensing renewals and transactions can be made by mail or via the internet at [www.transport.wa.gov.au](http://www.transport.wa.gov.au).

**For help or information call 13 11 56**

### Waste Pickup Days over Christmas and New Year will remain as normal.

Monday 25 December 2017  
Monday 1 January 2018

### Christmas Lake Grace and Newdegate Tip Times

#### Lake Grace

Monday 25 December 2017.....Closed  
All other days will remain the same.  
Monday 9am - 2pm  
Wednesday 9am - 2pm  
Saturday & Sunday 9am - 4pm

#### Newdegate

Will be open on the usual days  
Wednesday 9am - 1pm  
Saturday 9am - 1pm



### Emergency Contacts

Shire Operations will close during the festival period from Saturday 23 December 2017 until Tuesday 2 January 2018.

A few staff will be on hand to manage watering of gardens etc and be on call to answer any emergency request.

Any request will be inspected and any major works required will be scheduled to be undertaken in the New Year.



# Farmers Furious With Red Tape Bungle

## Media Release

Farmers across Western Australia are furious. With harvest mostly underway across the state and farmers using larger-than-ever agricultural vehicles to remove their crops from the paddock, it has come to farmers' attention that changes have been made to regulations relating to the movement of agricultural vehicles. WAFarmers Senior Vice President Lyn Slade said the organisation had taken many calls in recent days from concerned farmers regarding these changes, with most anxious to know whether they had been moving their machinery illegally.

"In the last few days, following the discovery of changes that restrict the movement of over-mass and over-size agricultural vehicles, WAFarmers has received numerous calls from farmers who were either preparing for harvest or who had already begun," Mrs Slade said. "WAFarmers contacted Main Roads WA last week to get written clarification regarding the legal movement of agricultural vehicles on public roads without a licensed pilot, as had previously been permitted under an exemption.

"Despite these phone calls and emails, currently Main Roads WA has not supplied written confirmation that farmers can legally move their vehicles without a licensed pilot. Another phone call today, this time to the Main Roads WA Heavy Vehicle hotline, confirmed that it

is currently not legal for farmers to move their agricultural vehicles without an accredited pilot. Effectively, farmers currently moving any over-mass and over-size vehicles without an authorised pilot would be doing so illegally and possibly without insurance protection should an incident occur."

Mrs Slade said farmers had the right to be furious that changes were made to the regulations without any consultation with the agricultural industry and furthermore, without any communication to farmers about these changes.

"Farmers needing to move vehicles over harvest have to be made fully aware of the implications of the changes to these regulations made by Main Roads WA, as many may be operating illegally," she said. "Given their poor performance thus far, Main Roads WA must immediately release this information and clearly communicate any changes to the regulations so that harvest can continue as efficiently and safely as possible."

Mrs Slade said it was understood that Main Roads WA was working to put another exemption in place but that it would not be effective until after it has been formalised.

## **Ballard Cleaning**

Pasture Seed and Canola Specialists

North Road Tincurrin

Ring Neil 9883 2005 or 0428 832 053



Canola cleaning and seed treatments at the best price

Gravity grading, the ONLY way to get the best quality seed for sowing

Bags, bulka bags or bulk

New bulka bags

1000 seed count and germ tests

Pasture seed, all species and varieties

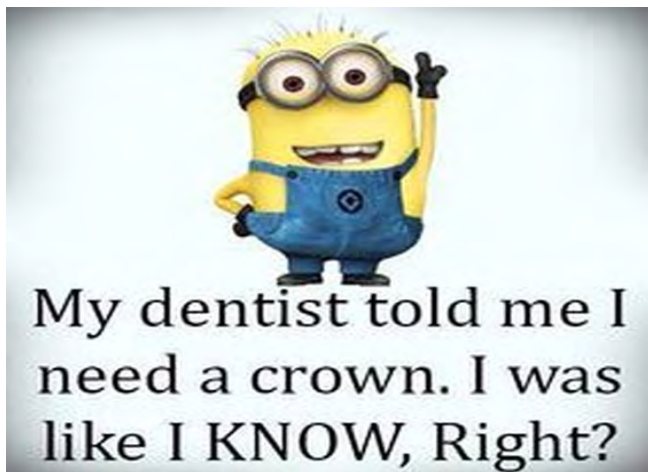
Serradella de-hulling specialists

New destoner for removing sand and stones

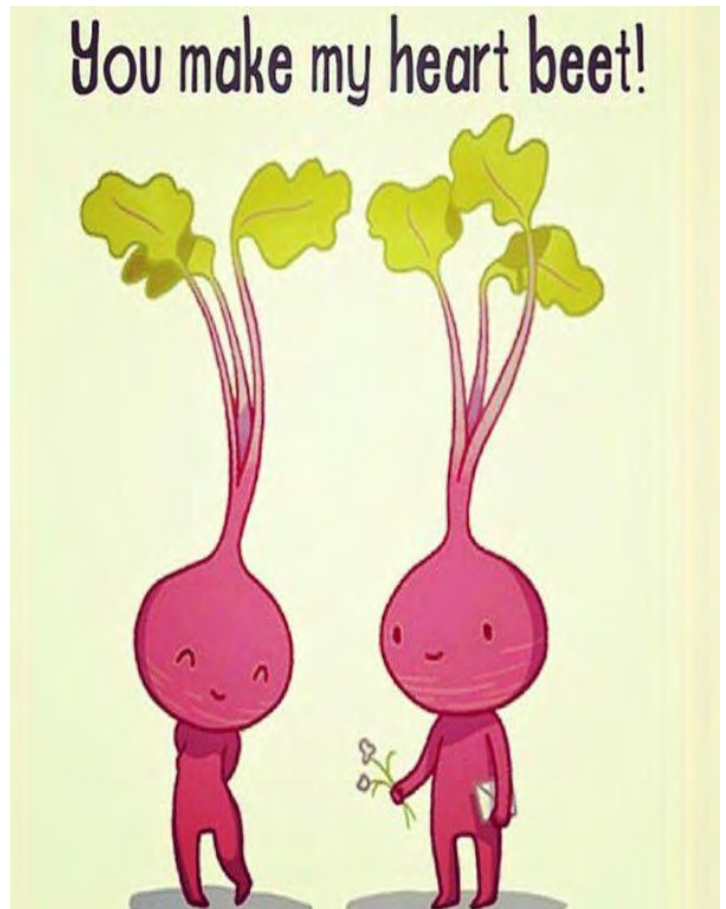
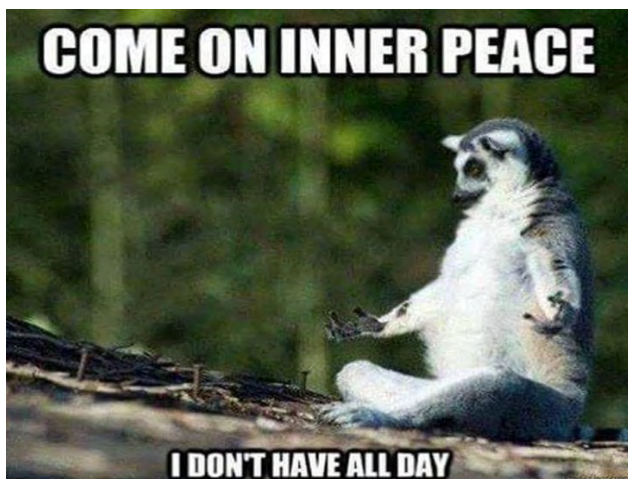
Bookings by appointment

## Humour

Mr. and Mrs. Brown had two sons. One was named Mind Your Own Business & the other was named Trouble. One day the two boys decided to play hide and seek. Trouble hid while Mind Your Own Business counted to one hundred. Mind Your Own Business began looking for his brother behind garbage cans and bushes. Then he started looking in and under cars until a police man approached him and asked, "What are you doing?" "Playing a game," the boy replied. "What is your name?" the officer questioned. "Mind Your Own Business." Furious the policeman inquired, "Are you looking for trouble?!" The boy replied, "Why, yes."



Reaching the end of a job interview, the Human Resources Officer asks a young engineer fresh out of the Massachusetts Institute of Technology, "And what starting salary are you looking for?" The engineer replies, "In the region of \$125,000 a year, depending on the benefits package." The interviewer inquires, "Well, what would you say to a package of five weeks vacation, 14 paid holidays, full medical and dental, company matching retirement fund to 50% of salary, and a company car leased every two years, say, a red Corvette?" The engineer sits up straight and says, "Wow! Are you kidding?" The interviewer replies, "Yeah, but you started it."



There was an elderly couple who in their old age noticed that they were getting a lot more forgetful, so they decided to go to the doctor. The doctor told them that they should start writing things down so they don't forget. They went home and the old lady told her husband to get her a bowl of ice cream. "You might want to write it down," she said. The husband said, "No, I can remember that you want a bowl of ice cream." She then told her husband she wanted a bowl of ice cream with whipped cream. "Write it down," she told him, and again he said, "No, no, I can remember: you want a bowl of ice cream with whipped cream." Then the old lady said she wants a bowl of ice cream with whipped cream and a cherry on top. "Write it down," she told her husband and again he said, "No, I got it. You want a bowl of ice cream with whipped cream and a cherry on top." So he goes to get the ice cream and spends an unusually long time in the kitchen, over 30 minutes. He comes out to his wife and hands her a plate of eggs and bacon. The old wife stares at the plate for a moment, then looks at her husband and asks, "Where's the toast?"



# The Rights and Rules of Sharing Economy

## Media Release

Consumer Affairs regulators around the country have launched a new campaign to educate consumers and traders about their rights and responsibilities around the sharing economy.

The sharing economy refers to platforms where people supply their private goods and services for other consumers to use, including ride sharing, home sharing and skills sharing.

With the rise of websites and apps such as Uber, Airbnb and Airtasker, consumer affairs regulators are taking the opportunity to remind Australians about their rights under the Australian Consumer Law (ACL).

The sharing economy provides a new, convenient experience for purchasing and hiring goods or services at a local level. Research shows that half of all Australians are using or thinking about using a sharing economy website or app, so it is important everyone plays their part to make sharing fair.

If you hire or buy goods and services through a sharing economy platform, you are protected by the ACL, in the same way as you would be if you were to buy in a shop.

Consumers are entitled to the truth about goods or services, the supply of those goods and services with due care and skill, and all the necessary information they need to make an informed decision.

- If things go wrong, you can follow these steps to resolve the issue:
- speak to the seller or service provider;
- contact the platform through their internal dispute resolution process, if they have one;
- write a factual customer review and rate the trader on the platform; or
- lodge a complaint with Consumer Protection.

Traders must not engage in misleading or deceptive conduct such as writing a fake review, asking or paying someone to write a review, writing a false review about a competitor or hiding negative customer reviews.


Online classified advertising sites like eBay or Gumtree do not form part of the sharing economy because the transaction occurs directly between two individuals or a buyer and seller. In these circumstances if the product is purchased from an individual it would be a private sale and not captured by the ACL. If the product was purchased from a business advertising on eBay or Gumtree, the business would be captured by the ACL but eBay and Gumtree would not.

For further information on your rights and obligations in the sharing economy, including videos that feature tips on how to share fair, visit [www.consumerlaw.gov.au/sharingeconomy](http://www.consumerlaw.gov.au/sharingeconomy). Information for consumers and traders is also available at [www.consumerprotection.wa.gov.au](http://www.consumerprotection.wa.gov.au).



Monday & Friday: Lake Grace  
Tuesday & Thursday: Newdegate

**Appointments Available**

 **0439858587**



St John Ambulance Benefit Fund memberships have recently been posted out omitting online banking details.

Please find below banking details.

**St John Ambulance**  
**306019**  
**4188625**

**'Please' use your membership number and name in the reference.**

Alternatively cash/cheques will be accepted at the Lake Grace Post Office.

Thank you  
and we apologise for any inconvenience.

# Puzzles & Stuff

Some words from the 9th November edition of Boggle

Answers to 09/11/2017 Sudoku

Palmistry	Imply
Ptyalism	Lairs
Armpits	Liars
Misplay	Limps
Mistral	Mails
Palmist	Misty
Artily	Pairs
Lyrism	Plait
Parity	Prism
Pastil	Rials
Plaits	Salmi
Primal	Sitar
Ramtil	Slimy
Riyals	Spirit
Simply	Spilt
Spiral	Stair
Stripy	Tails
Trails	Tipsy
Trials	Italy
Triply	Paris
Aprils	Imps
Pamirs	Lips
Airts	Lisp
Amity	Pits
Astir	Silt
Atrip	Yips

7	2	5	8	6	3	4	9	1
9	6	8	4	5	1	3	7	2
4	1	3	2	7	9	8	6	5
6	4	1	9	2	7	5	8	3
2	8	7	6	3	5	1	4	9
3	5	9	1	4	8	7	2	6
8	9	2	5	1	4	6	3	7
1	3	4	7	9	6	2	5	8
5	7	6	3	8	2	9	1	4

1	6	2	4	9	5	3	7	8
3	7	9	6	2	8	1	4	5
5	8	4	7	1	3	9	6	2
7	3	1	5	8	6	4	2	9
6	2	8	3	4	9	5	1	7
4	9	5	2	7	1	6	8	3
8	1	6	9	3	7	2	5	4
2	5	3	8	6	4	7	9	1
9	4	7	1	5	2	8	3	6

R	G	E
E	D	N
S	U	A

This week's Boggle

---



---



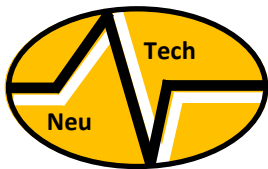
---



---



---



## POSITION AVAILABLE - AUTO ELECTRICAL FITTER

A position will become available from January 2018 for an Automotive Electrical Fitter at Neutech Auto Electrics in Lake Grace.

The trade apprenticeship is now back to a 48mth term, and applicants must be at least 17 years of age and hold a current C class drivers licence (car). Persons undertaking or having completed a pre apprenticeship or part way through an apprenticeship would also be considered. We are looking for a self motivated , reliable , trustworthy and intelligent person who is able to complete tasks in an efficient manner with a quality finish.

Please send resumes via email to [neutechlg@bigpond.com](mailto:neutechlg@bigpond.com) and direct all queries to Ross on 9865 1164



# Campaign Promoting Road Safety Launched

*The Nationals Media Release*

Member for Roe Peter Rundle is backing the 2017 WALGA RoadWise Road Ribbon for Road Safety campaign, which launched on Sunday and runs until January 5 next year.

The campaign is committed to improving road safety by increasing community awareness about the role everyone has to play when using roads in Western Australia.

Mr Rundle said more than 4100 people were killed or seriously injured on regional roads from 2012 – 2016, a rate of 127.5 incidents per 100,000 people.

"The Great Southern is not immune from the devastating impact of road accidents, with 40 people killed over that four year period, and 42 in the Goldfields-Esperance region," he said.

"Time and time again we hear the same behaviours leading to crashes – seat belts not being worn, speed, drink driving and fatigue.

"If everyone does their bit by following road rules, driving to conditions, buckling up, staying alert and being respectful of other road users, we can all get home safely to our families."

Last year the Road Ribbon for Road Safety campaign involved more than 300 organisations across the state and reached an estimated audience of 1 million people.

The Nationals WA Road Safety spokesman and Member for the Agricultural Region Martin Aldridge said the community-based campaign provided a chance for everyone to get involved with road safety.

"The aim is to get the community involved so we can cohesively work together to reduce road fatalities and injuries," he said.

"We are especially conscious of the disproportionately high road toll recorded in regional WA and encourage those traveling in the regions over the holiday period to be safe road users.

"No family wants an empty seat at the table this Christmas, so slow down, enjoy the ride and be mindful of other road users this holiday season."

The Nationals WA will be wearing their road ribbons in Parliament over the next three weeks to demonstrate their support for the campaign, joining more than 21,000 other West Australians who have ordered the ribbons so far.

A full list of community events occurring during the 2017 WALGA RoadWise Road Ribbon for Road Safety campaign can be found by clicking on the Distribution locations tab at <http://www.roadwise.asn.au/road-ribbon-for-road-safety.aspx>

## Stay On Your Feet

### Free Seniors Program

Tuesday

10:00 AM

At the Shire Hall



## OBORNE CONCRETE



Chemical Sheds \* Boomspray Pads  
House Pads \* Silo Pads \* Driveways  
Super Sheds \* Workshops

Tip truck and bobcat also available  
for any type of site works.

Small and Large Loads

Grant Osborne - Lake Grace

Mobile: 0427 651 367

[osborne.concrete@gmail.com](mailto:osborne.concrete@gmail.com)

facebook = Osborne Concrete

## Rosey Chircop 'Jill of all trades'

- Lawn Mowing & all garden care
- Residential Cleaning
- Commercial Cleaning
- Carpet Cleaning
- Window Cleaning
- And anything else

Ph 0408 304 439



# Regional Parents 'outSmarting' Perth Parents With Hat Use

*Cancer Council Media Release*

Regional parents across WA have been congratulated by Cancer Council WA for their SunSmart role modelling following findings from a new survey.

The survey conducted by the WA Cancer Prevention Research Unit at Curtin University for Cancer Council WA showed regional parents were significantly better role models for hat wearing than metropolitan parents.

While the majority of survey respondents reported wearing a hat when out with their children in the sun, parents in regional WA do a noticeably better job than parents in Perth with 88% of respondents reporting wearing hats versus 73% of parents in Perth.

The survey results have been released to remind all Australians about how sun protection and skin awareness can be a lifesaver when it comes to skin cancer.

Cancer Council WA's Regional Education Officer Karen Hansen said parents in the Wheatbelt should feel pleased about the survey results.

Karen Hansen said the focus of National Skin Cancer Action Week this year was on role modelling to improve SunSmart behaviour. The survey also asked parents how often their children wore hats when in the sun. 76% of parents reported that their children "always" or "usually" wore hats in the sun, which shows the power of good role modeling.

"It is encouraging to know the SunSmart message is getting through," she said, "but given that summer is only weeks away, it is also a good time to remember the best ways to protect you and your family members from sun."

"Getting rid of the baseball cap and replacing it with a bucket or broad brimmed hat is an easy way to get much better sun protection" said Karen

The latest report from the WA Cancer Registry showed in 2014, 1,304 West Australians were diagnosed with melanoma and 153 died from melanoma. There were also more than 83,000 services related to non-melanoma skin cancers.

Karen Hansen said it was also a timely reminder about the importance of sunscreen use in light of new data released from the National Sun Protection Survey last month that showed some Australians are increasingly confused about sunscreen.

Karen Hansen said sunscreen offers good protection from damaging UV, however it needs to be used alongside protective clothing, hats, shade and sunglasses."

"We want everyone in the Wheatbelt region to understand sunscreen is not a suit of armour. "You need to use enough sunscreen (1 teaspoon per

exposed limb, 1 teaspoon for your front, 1 for your back and 1 teaspoon for your head, apply 20 mins before going out in the sun and reapply every 2 hours."

"Also remember to use sun protection when the UV is at 3 or above. Think UV not heat." said Karen Hansen.

For your UV forecast visit [www.myuv.com.au](http://www.myuv.com.au)

"The Cancer Council recommends following five SunSmart steps to reduce the risk of developing skin cancer:

1. Slip on sun protective clothing
2. Slop on SPF 30+ or higher sunscreen.
3. Slap on a hat
4. Seek shade
5. Slide on some sunglasses

## Lake Grace Transport

Twice weekly freight service to and from Perth

- ◆ Secure depot in Perth to drop freight off. Depot is C/O BW James, 19-21 Hodgson Way, Kewdale.
- ◆ For all your wool and general freight
- ◆ Forklift to load wool on farm
- ◆ Accreditation to load at Midland Brick
- ◆ We also cart bulk grain, fertilizer, lime, gypsum and firewood

Your friendly local operator - nothing is a problem, only too happy to be of service.

For all your freight needs call:  
Darren on 0428 651 339







## Enrolled Nursing – Narrogin Campus

*HLT54115 – Diploma of Nursing*

Online applications are now open for 2018



Applications open for full-time courses starting in Semester 1, 2018


Applications Close – Friday 8 December 2017


All applications for enrolment will be processed through Training Admissions Online.

You are required to complete the application form online at: <http://tasonline.tafe.wa.edu.au>.

For further information phone the Narrogin campus on 9881 9000.

 Narrogin campus  
59 Fortune Street

 9881 9000  
Freecall 1800 621 445

 [narrogin@srtafe.wa.edu.au](mailto:narrogin@srtafe.wa.edu.au)  
Find us on Facebook

RTO Code 52790

[southregionaltafe.wa.edu.au](http://southregionaltafe.wa.edu.au)

# How You Can Get a Better Night's Sleep

<https://www.yourlifechoices.com.au/health/your-health/how-to-get-a-better-nights-sleep?>

Oh ... to be a teenager again. Just to be able to sleep through the night – and all the way to lunchtime if you want. Remember those days?

You're tired. You've been waking up at 2am, unable to sink back into the abyss – for hours.

The problem has become increasingly common as you have aged. You try not to look at a clock, or your phone, or pick up a book. You keep your eyes shut and try to fill the hours as best you can; revisiting every holiday you've ever had – and the standout meals you've eaten along the way; debating (with yourself) your top 10 books and movies; dredging the brain for your earliest memory. They're great time-fillers, but, of course, you'd rather be asleep.

## What we know

It's a myth that you need less sleep as you get older, with 7.5 to 9 hours recognised as the norm for healthy adults aged over 20. But don't stress if you're falling short.

Older bodies produce lower levels of the human growth hormone so you're likely to experience less deep sleep. That, in turn, affects the production of melatonin, a hormone that regulates sleep and wakefulness, so there's a Catch-22.

Your immune system and cells repair while you sleep, so concentration and memory will be poorer if you've had an interrupted night.

Muscles relax and energy is restored during sleep.

Menopause – and the accompanying hot flushes that can affect men as well as women – can interrupt sleep. It's tough to sleep through a waterfall of perspiration.

A lack of daily exercise will have an impact, as will anxiety and depression, some medications, and a lack of sunlight.

Health issues such as prostate problems, Alzheimer's and dementia, general aches and pains will also have an affect.

## What you shouldn't do

- have a lengthy afternoon nap
- drink caffeine in the afternoon
- discuss weighty issues with family close to bedtime
- stress about not getting enough sleep.

## What you should do

- exercise daily and get enough (indirect) sunlight
- ensure your evening meal is eaten well before bedtime
- turn off the television and put the phone and iPad down at least 15 minutes before lights out – turn off the phone or switch it to 'do not disturb'
- aim for a cool dark bedroom

- use the bedroom only for sleeping – no television, please
- make sure your bed is comfortable and you're happy with your pillow
- discuss any health and medication issues with your doctor.

## And try:

### Aromatherapy

If a particular essential oil or perfume helps you breathe deeply and relax, use it.

### The 4-7-8 technique

Breathe in for four seconds, hold for seven seconds and breathe out for eight seconds. The aim is to focus the brain, slow your heart rate and relax.

What technique have you used to get a perfect night's sleep?

## Lawn Mowing & Gardening Services

e: pksgardening1@gmail.com

- Mowing
  - Reticulation
  - Garden design
  - Soil testing
  - Pruning
  - General garden maintenance
- PLUS LOTS MORE!!**

Peter Kain (PK) or Deb

p: 0427 020 561



# Aussies Could Walk Their Way to Healthier Hearts

*Media Release*

Nine in 10 Australians could reduce their risk of heart disease simply by walking as little as 15 minutes more each day, the Heart Foundation said following a new report from the Australian Institute of Health and Welfare (AIHW). The report, *Impact of physical inactivity as a risk factor for chronic conditions: Australian Burden of Disease Study*, looks at the health impact – or 'burden' – of a lack of physical activity in terms of years of healthy life lost through living with an illness or injury, or through dying prematurely. Being inactive has a strong link with heart disease. One-third of the total burden due to physical inactivity in Australia was caused by heart disease. This figure demonstrates the significance of being active and having healthy heart. It estimated that if the 89 per cent of Australians who fall in the 'at risk' (sedentary, low and moderate activity) category did an extra 15 minutes of moderate activity such as brisk walking five days per week, 13 per cent of the potential disease burden due to physical inactivity could be avoided. And by adding 30 minutes of walking or other moderate activity, five days per week, 26 per cent of future disease burden could be avoided, the report stated. Heart Foundation National CEO Adjunct John Kelly said many people underestimate the impact of physical inactivity on themselves, on their families, and on the health system. "Walking is hugely underrated as a pow-

erful prescription for good health and this latest research shows how beneficial it can be in lowering your risk of heart disease," he said. "This can be as simple as taking a walk during your lunch break, getting off the bus or train a few stops earlier, or parking a few blocks away and walking the kids to school." Professor Kelly said while the report showed an expected small increase in the number of active adults in the coming years, this unfortunately did not include those aged over 60. "We know it can be difficult to start new habits, or even maintain exercise routines, but that's where programs such as Heart Foundation Walking can be great. Not only will participants' physical health benefit from more walking, but they often feel happier, make more friends and feel more connected to their community," Professor Kelly said. In May, the Federal Government announced that \$10 million in funding over two years would be allocated to the Heart Foundation for an initiative to support up to 300,000 Australians to adopt the easy way to better health – regular walking – by 2019. "We are working very closely with the Federal Government on how to further engage the nation in becoming more active in the new year."

## Electric Cars To Be Charged in Lake Grace

*Rosie Timperley*



Electric cars will soon have a pit-stop in Lake Grace to be able to charge their cars for the next leg of their journey. This will bring welcomed business to the town as electric cars become more popular and road trip routes are altered to fit in with charging station locations. Look out for more information in next fortnights edition.



# Beyondblue and NHMRC to Fund Five-Year Childhood Adversity Research

## Media Release

Beyondblue and the National Health and Medical Research Council will fund a five-year research initiative into the impact of childhood adversity on mental health.

The two organisations have called for research proposals under the NHMRC's Centres of Research Excellence (CRE) scheme, with applications to close at 5pm AEDT on Wednesday, December 6.

All applicants must commence their application and provide minimum data to NHMRC by 5pm AEDT on Wednesday, November 22.

There is a strong correlation between adversity in childhood and the development of mental health conditions such as anxiety and depression in adulthood.

Three million Australians live with anxiety or depression and the latest Australian Bureau of Statistics data shows the national suicide rate remains unacceptably high.

Suicide accounted for over one third of deaths among 15 to 24-year-olds and a quarter of deaths among people aged 25 to 34.

Beyondblue CEO Georgie Harman said the \$2.5 million study would provide new and valuable insights into how childhood trauma, distress and disadvantage can affect a person's long-term mental health and suicide risk.

It would identify ways to prevent or minimise various childhood adversities as well as the most effective means of supporting children who have experienced hardship.

"Hardship is, unfortunately, part of everyday life for many Australian children and we know that this adversity can have a significant impact on their mental health as they become teenagers and adults," Ms Harman said.

"We want every single Australian to achieve their best possible mental health and prevention, protection, supporting individuals and families is always better than treatment or cure.

"Evidence suggests that half of all lifetime cases of mental health disorders emerge by age 14; three quarters emerge by age 24.

"We are thrilled to partner with the NHMRC on this landmark piece of work. The research we're funding with the NHMRC is about making our kids' lives better and giving them the best possible start to life so they grow up to be resilient, mentally healthy adults."

Ms Harman said the study would draw on expert knowledge from various sectors including mental health, child and family services and education as well as insights from people who have experienced mental health conditions and childhood adversity.

This is the second major research initiative beyondblue has funded in partnership with the NHMRC. Earlier this year, the organisations launched a jointly funded, targeted call to fund research into depression, anxiety and suicide among older Australians.

For more information about the childhood adversity research initiative, go to the NHMRC website:

<https://www.nhmrc.gov.au/grants-funding/apply-funding/centres-research-excellence-cre>

Mental health professionals are available 24/7 at the beyondblue Support Service – 1300 22 4636 or via [beyondblue.org.au/get-support](https://beyondblue.org.au/get-support) for online chat (3p-12am ADST) or email responses (within 24 hours).



## Relief school bus drivers urgently required for 2018

Need:

- F endorsement on car licence for light rigid
  - Working With Children check
  - First Aid certificate

Contractor will pay all costs

For more information, call Natalie Gambuti

0429 793 973

# Dumbleyung Versus Tarin Rock in Tennis Pennants

*Tamara Bartram*

Pennants on Sunday 12 November saw a nearly full contingent go on the bus trip to Tarin Rock. With a confident new/old look team on and with at least the anticipation of all going to have a great time and travelling home with a few stops on the way, we hoped. Arrived early, thanks to our red-necked, blue balls, double faulting Captain, bus driver extraordinaire and now also a four serve a week man after the bus trip.

With Chloe McDougall No 1 and Carly Smith No 2 (and believing she was the sacrificial lamb to the slaughter) they enjoyed the challenge to prove they could hold their own, having a marathon match to only go down 5-7, 6-4 to the experienced pairing of Lisa Pearce and Sharon Robinson who have been playing tennis together for many, many, many, many years, with both ladies winning four and five sets. As it was mentioned, not many can keep hitting back those dynamite hard shots from them but our girls acquitted themselves magnificently both liking the hard ball.

With the Dumbleyung men this week, mention must be made that they said they won more men's sets than the women but the scribe has her suspicions. Though with the comeback of super fit Scott Angwin winning five sets; Howie Ward, after injury, four sets; Tom Pearce, whom all the ladies would like to play with - lucky Julie Ramm, also both winning five sets; daughter and father pairing of Pippa and Greg Bairstow playing their first mixed together in pennants with 100% rating with Pippa also winning five sets; Tamara Bartram five; Jane Coad four and the rest doing their best.

Final scores Dumbleyung 22 sets 162 games to Tarin Rock 14 sets 140 games. The food was delicious as were the well deserved cold drinks after, with stories by both teams of what could have been getting wilder as time went by. Mention must be made of the entertainment on the way home from the No1 and 2 women (no names mentioned) - they are continuing the good form of days gone by, of an interesting, informative, colourful bus trip.



**Left: Tarin Rock tennis penants player Lisa Pearce**

We have all learnt how it is very important to have enough serves a week to keep you trim, healthy and fit. Advertising has a lot of merit and obviously the younger generation are very keen to follow the suggestions.



**Above: Karissa Pelham Tarin Rock, Michelle Cameron Tarin Rock, Julie Ramm Dumbleyung**

## GS MOBILE MECHANICAL SERVICES

60 Absolon Street, Lake Grace, WA 6353  
Phone: 98651291, Mobile: 0437 204909

### Are you prepared for Harvest?

#### **Does your Truck need some maintenance or tyres?**

GS Mobile Mechanical Services have two qualified and experienced mechanics available in Lake Grace ready to do any truck maintenance and repairs required to get your truck ready for harvest.

We also have quality **Steer, Drive and Trailer Tyres** available for supply and fitting.

**Windscreen needs replacing?** We can order and fit within 48 hours.

**Header or Tractor needs an aircon regas?** We can do regasing at Lake Grace or on your farm.

**Truck not licensed?** We can licence your vehicle.

For any pre harvest maintenance, header, tractor or truck tyre requirements, windscreen replacements, air conditioning re gasing, licencing or anything else you think we may be able to assist you with call Cheryl now on **98651291** or drop in to see the boys at 60 Absolon Street, Lake Grace.

# Thank a Farmer on National Agriculture Day

Media Release

To celebrate National Agriculture Day, Member for Roe Peter Rundle MLA is encouraging the community to get behind those in the agrifood industry that are feeding our nation and the world.

Western Australia's agrifood industry comprises 14,500 agriculture-related businesses with a gross agricultural production of \$8.2 billion per year.

The industry employs more than 180,000 people, making agriculture the State's second biggest export industry.

Mr Rundle said WA farmers consistently punched above their weight when it came to production, with more than 75 million hectares of land used for farming activity.

"WA leads the nation in many primary production areas and its reputation as a go-to source for high-end export produce is growing," he said.

"Not only is each farmer helping feed hundreds of Australian and international mouths every year, they are frontline environmentalists helping manage land and conservation.

"They are also among the most self-sufficient in the world, requiring minimal government support compared

to Norway, Korea, China and countries in the European Union."

Australia is a world-leader when it comes to sophisticated agricultural land management and the primary industries sector has reduced greenhouse emissions by 63 per cent over the last two decades.

Agricultural enterprises across the Roe electorate are diverse, and boasts strong sheep and fisheries sectors. WA has 13.9 million sheep, run by 4500 sheep producers, producing both meat and wool, while fisheries exports in 2015-16 were valued at over \$597 million.

Nationals WA agriculture spokesman Colin de Grussa, a former Esperance-based farmer, said the day provided a fantastic opportunity to sell the story of agriculture. "Our agrifood sector is one of the most advanced on the planet and those involved in it have fantastic stories, information and advice to share with consumers," he said. "I encourage everyone to get behind agriculture, which is a pillar of our State and national economy, and better educate ourselves about the incredible value and food security it provides to all of our communities."



# PAINTING

Reg. # 4709

Domestic, Commercial, Industrial,  
Farm Painting Specialty.

Clean, Precise and Quality work.

Local references available.

For FREE Quotation and Booking

Call Mick

0419 701 332



# Mobile Black Spot Program Priority

## Media Release

The Coalition Government has today announced the commencement of a tender process for the latest round of the Mobile Black Spot Program, which will improve mobile coverage for 106 priority locations around Australia.

The Government has committed \$60 million to priority black spot locations, on top of the \$160 million already committed under the first two funding rounds of the program.

Telecommunications providers will bid to deliver coverage to priority locations by nominating the amount of Commonwealth funding sought, their own proposed co-contribution, funding from state and local governments and other sources. Bids will be assessed by the Department of Communications on a value-for-money basis.

Of the original list of 125 priority locations announced during the 2016 election campaign, 19 locations have already successfully been addressed under round 2 of the program and through carriers expanding their own networks. One of the priority locations on Flinders Island, Tasmania will also receive improved mobile coverage through the Coalition Government's Building Better Regions Fund.

More than 312 new or improved mobile base stations have already been delivered under the first two rounds of the Mobile Black Spot Program, with a new base station now being switched on every working day, on average.

Telstra, Vodafone and Optus are on track to deliver all 765 base stations funded under the first two rounds by the end of 2018, and successful bidders for the additional 106 priority locations will also be expected to complete the rollout by the end of 2018.

The Commonwealth's overall commitment of \$220 million to the Mobile Black Spot Program has attracted a total funding pool worth more than \$650 million, including co-contributions from State Governments, mobile network operators and third party organisations.

The Australian Competition and Consumer Commission (ACCC) recently released the final report from its mobile roaming inquiry, providing regulatory certainty for potential applicants to compete in the priority locations round.

Outcomes of the tender process are expected to be announced in coming months. The guidelines for the priority locations round are available at: [www.communications.gov.au/mbbsp](http://www.communications.gov.au/mbbsp)

The Team from Dawsons Funeral Home will be in town

## Thursday 30th November 2017

to discuss

## Pre Planning, Funeral Bonds,

&

## Monumental Work, Repairs & Restorations

To make an appointment please contact Dawsons Funeral Home  
on 08 9881 1161 or email [support@dawsonsfuneral.com.au](mailto:support@dawsonsfuneral.com.au)

120 Federal Street Narrogin WA 6312

P: 08 9881 1161 | F: 08 9881 3644

[www.dawsonsfuneral.com.au](http://www.dawsonsfuneral.com.au)



**DAWSONS**  
FUNERAL HOME

## PUBLIC NOTICES

### Dr Linda Haines

Is available in Lake Grace on Monday 11th and Tuesday 12th December. Ring 9865 1208 for an appointment.

### Sally Dickinson

Counsellor for Southern AgCare. A free and confidential service. Contact 0427 192 155  
[www.southernagcare.org.au](http://www.southernagcare.org.au)

### Holyoake Community Alcohol and Drug Service

Matthew Bejger Counsellor/Diversion Officer  
Ph: 08 9881 1999

### Cancer Support Coordinator

Barbara Brennan from Cancer Council WA is the Cancer Support Coordinator for the Wheatbelt Region. Call Barbara on 9621 1810 for information, support and assistance.

### Lake Grace Op Shop

46 Bennett Street (Old Church)

#### Open

Tuesday 1:00 - 4:00pm  
Friday 9:30am - 1:00pm

### First Aid Kits

Are now available for purchase at  
CCL Hardware Lake Grace.

### Lake Grace Development Association

Next meeting:  
Monday 4th December 7:30pm at Men's Shed

### Community Midwife

Sandy Slee, the Community Midwife, will be coming to Lake Grace the first Tuesday of every month until further notice. Call Narrogin Primary Health on 9881 0385 to make an appointment.

### CWA Bookings

Please be advised that if you wish to book the CWA Hall then please contact the Lake Grace CRC on 9865 1470.

## Crisis Care Numbers

<b>Doctor's Surgery</b> -9865 1208	<b>Electricity Faults</b> - 13 13 51
<b>Hospital</b> - 9890 2222	<b>Water Faults</b> - 13 13 75
<b>Ambulance/Fire/Police</b> - 000	<b>Directory Assistance</b> - 1223
<b>55 Central Men's Refuge</b> 9272 1333	<b>Family Helpline</b> 1800 643 000 / 9223 1111
<b>Sally Dickinson</b> 0427 192 155 <i>Southern AgCare Counselling</i>	<b>Kids Helpline</b> 1800 551 800 <a href="http://www.kidshelp.com.au">www.kidshelp.com.au</a>
<b>Poisons Information</b> 13 11 26	<b>Ngala</b> 9368 9368 <a href="http://www.ngala.com.au">www.ngala.com.au</a>
<b>Crisis Care WA</b> - 9223 1111 / 1800 199 008 <a href="http://www.community.wa.gov.au">www.community.wa.gov.au</a>	<b>Wheatbelt Mental Health Service</b> Northam - (08) 9621 0999 Narrogin - (08) 9881 0700
<b>Lifeline Australia</b> - 13 11 14 <a href="http://www.lifeline.org.au">www.lifeline.org.au</a>	<b>Beyond Blue</b> - 1300 22 4636 <a href="http://www.beyondblue.org.au">www.beyondblue.org.au</a>
<b>Seniors Information Services</b> 9321 2133 <a href="http://www.cotawa.asn.au">www.cotawa.asn.au</a>	<b>Citizens Advice Bureau</b> 9221 5711 <a href="http://www.cab.wa.com.au">www.cab.wa.com.au</a>
<b>Family Court of WA</b> 9224 8222 / 1800 199 228 <a href="http://www.familycourt.wa.gov.au">www.familycourt.wa.gov.au</a>	<b>Youth Legal Service</b> 9202 1688 / 1800 199 006 <a href="http://www.youthlegalservice.inc.com.au">www.youthlegalservice.inc.com.au</a>
<b>Main Roads</b> - 138 138	<b>Rural Link</b> - 1800 552 002
<b>Mental Health Emergency Response Line</b> - 1300 555 788	<b>Suicide Call Back Line</b> - 1300 659 467 <a href="http://www.suicidecallbackservice.org.au">www.suicidecallbackservice.org.au</a>
<b>Alcohol &amp; Drug Information Service</b> - 1800 198 024 <a href="https://www.mhc.wa.gov.au/">https://www.mhc.wa.gov.au/</a>	<b>Parent Drug Information Service</b> - 1800 653 203
<b>Holyoake</b> Northam - (08) 9621 1055 Merredin - (08) 9041 3807 Narrogin - (08) 9881 1999 Freecall - 1800 447 172	<b>Relationships Australia Fair Programme</b> 9336 2144 <a href="http://www.wa.relationships.com.au">www.wa.relationships.com.au</a> 1300 364 277

# Community Clubs and Associations

Club / Association	Secretary / Contact	Contact Number	Contact Email
Artist Group	Tania Spencer	0429 041 063	spencertania@hotmail.com
Craft Group	Meet at the CWA Building Saturdays from midday onwards		
CWA	Suzanne Reeves	0427 651 310	lakegracecwa@gmail.com
Early Learning Centre (Daycare)	Vicki Reynolds	08 9865 2568	lakegraceelc@gmail.com
Development Assoc	Paula Carruthers	0499 616 070	ghpmcarr@bigpond.com
LIFT Lakes Information & Farming	Lauren Duckworth	0488 559 860	laurenalex@westnet.com.au
Men's Shed	Phil Clarke	0427 651 155	philclarke@westnet.com.au
Playgroup	Deb Carruthers	0438 895 101	
School	Registrar	08 9865 1207	lakegrace.dhs@education.wa.edu.au
Sportsman's Club	Claire Pelham	08 9865 1239	lgsportsmansclub@bigpond.com
Toy Library	Lauren Duckworth	0488 559 860	laurenalex@westnet.com.au
<b>Summer Sport</b>			
Lake Grace Cricket Club	George Chircop	0417 950 437	swan_district@hotmail.com
Lake Grace Bowls Club	Claire Pelham	0457 207 749	richie21claire@yahoo.com
Lake Grace Tennis Club	Lauren Duckworth	0488 559 860	laurenalex@westnet.com.au
Tarin Rock Tennis Club	Wendy O'Neill	9864 9040	

## CHURCH TIMES

### Lake Grace Catholic Church

**Sunday 26th November**

Lake Grace 10 am

**Sunday 3rd December**

Lake Grace 6 pm

For inquiries and request for home visitation,  
please contact Fr Joseph Sousa on 9865 1248.

### Anglican Church of Lake Grace

**Sunday 26th November**

Morning Prayer 9am

**Sunday 3rd December**

No service

Enquiries: Father Dave 0427 545 560  
Wally Perry 0448 795 070

## Justices of the Peace

Colin Connolly	0427 858 066
Ron Dewson	9865 1224
Amanda Milton	0429 654 011
Geoff Sabourne	0429 651 171

## Lake Grace Shire Councillors

Councillor	Telephone	Fax
Jeanette de Landgraft ( <i>Pres</i> )	9872 0029	9838 9041
Steve Hunt ( <i>Vice Pres</i> )	9865 1650 0427 651 585	
Ross Chappell	0428 654 058	9865 4051
Debrah Clarke	9865 4041	9865 4032
Roz Lloyd	9871 1534	9871 1676
Allan Marshall	9865 3022	9865 3012
Murray Stanton	9865 1329	9865 1223
Peter Stoffberg	0447 281 181 9865 2550	
Mikaela Spurr	0438 926 196	



# COMMUNITY CALENDAR

## November

Fri 24 Fish & Chips @ Sportsman's Club  
Op Shop Open - 9:30am to 1pm  
HACC 4th Friday Activity

Sat 25 Rubbish tip open  
Craft @ CWA  
Steak Tea @ Sportsman's Club  
Bowls - Club Championship Triples  
Cricket - Lake Grace v Newdegate

Sun 26 Rubbish tip open

Mon 27 Rubbish Collection & rubbish tip open  
Recycling Collection  
SwimAbility

Tue 28 Men's Shed (morning)  
Chair Aerobics 10:30am at Village Hall  
SOYF Seniors Program -10am @ Shire Hall  
Op Shop Open - 1pm to 4pm  
Lego Club - 3:30 to 4:30pm  
HACC Foot Clinic  
CWA Meeting @ 1:30 pm  
School Board Meeting  
Building Surveyor in Lake Grace

Wed 29 Rubbish tip open  
HACC Activity & Morning Tea 10 - 1:30am

Thur 30 Bowls Training  
Gym Club AGM @ Café Arjos

Fri 1 Fish & Chips @ Sportsman's Club  
Op Shop Open - 9:30am to 1pm  
Driving Assessor in Lake Grace

Sat 2 Rubbish tip open  
Craft @ CWA  
Steak Teas @ Sportsman's Club  
Bowls - Lake Grace v Karlgarin  
Cricket - Bye

Sun 3 Rubbish tip open

Mon 4 Rubbish Collection & rubbish tip open  
Deadline for Lakes Link News  
P & C Meeting @ 7 pm  
LGDA Meeting @ 7.30pm at Men's Shed

Tue 5 Men's Shed (morning)

Chair Aerobics 10:45am at Village Hall  
SOYF Senior Program - 10am @ Shire Hall  
Op Shop Open - 1pm to 4pm  
Lego Club - 3:30 to 4:30pm

Wed 6 Rubbish tip open  
HACC Activity & Morning Tea 10-11:30am  
Shire Ordinary Council Meeting 3pm

Thur 7 Lakes Link Published  
Bowls Training  
Toy Library  
CWA Senior Citizens Luncheon

Fri 8 HACC Bus Outing

### Coming Events

12th December - CWA Meeting  
12th December - Building Surveyor  
13th December - End of Year Concert  
14th December - Christmas Festival/Late Night Shopping  
16th - 22nd December - Vacswim early start program  
Newdegate  
21st December - Toy Library

**2018**  
1st January - Driving Assessor in Lake Grace  
3rd - 12th January - Vacswim in Lake Grace  
10th February - Lake Grace Cricket Club Centenary

		2				8		
1				4				5
	5		2		8		7	
7		8	9		2	3		1
			7		4			
2		6	1		3	7		4
	6		8		1		9	
9				3				7
		4				6		

### Sudoku

- ☐ The Sudoku grid of rows and columns is divided into individual 3x3 boxes.
- ☐ The aim of the game is to fill each row, column and 3x3 box with the numbers 1 to 9.
- ☐ You can't repeat numbers in a row, column or 3x3 box and you can't change the numbers already in squares.

		2		9		6		
	6				2	4		8
					6		7	
3		5	8					
	9						2	
					7	5		4
	8		1					
1		7	4				3	
		9		6		8		